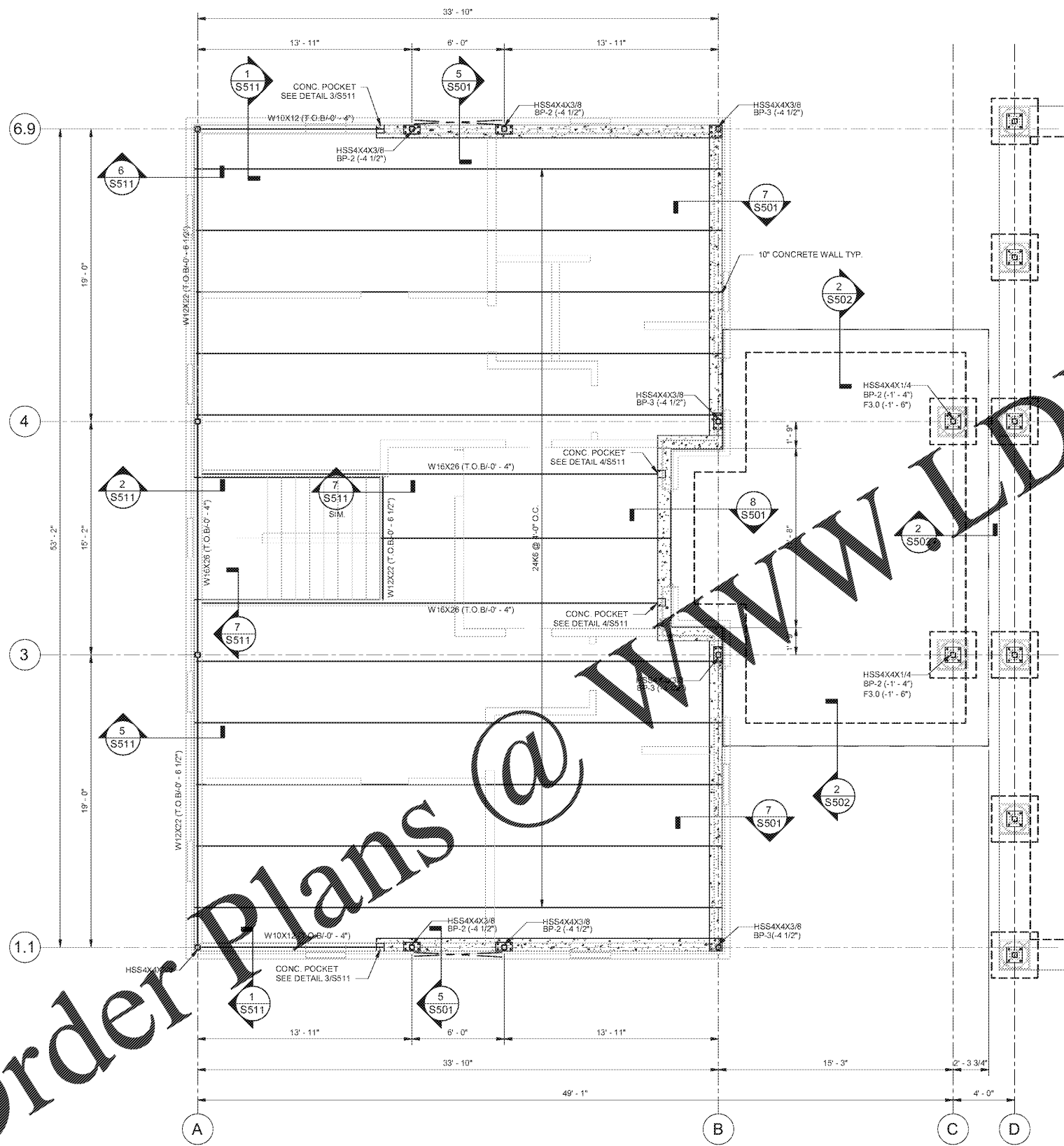


Order Plans @

WWW.DILine.com



CONCRETE SLAB PLAN NOTES:

- SEE DRAWING S111 & S112 FOR STRUCTURAL AND DESIGN NOTES
- SEE DRAWING S501, S502 FOR TYPICAL WALL JOINT, WALL AND FOOTING CORNER REINFORCING, SCHEDULES, BASE PLATE AND ANCHOR ROD DETAILS.
- SEE ARCHITECTURAL DRAWINGS FOR STAIR LOCATIONS.
- SEE ARCHITECTURAL DRAWINGS FOR FLOOR SLOPES AND DRAINS.
- SEE PLUMBING DRAWINGS FOR UNDER FLOOR PLUMBING.
- FOR WALL SUPPORTING JOIST GIRDERS THE VERTICAL REINFORCEMENT SHALL BE PLACED AT 8" O.C. UP TO 5 CELLS
- FOR SIDEWALK LAYOUT REF. ARCH. DWGS.

FOUNDATION NOTES:

- FINISHED FLOOR ELEV SEE ELEVATION FOR INFO. SEE CIVIL DRAWINGS FOR ACTUAL.
- BP-(X-X) INDICATES BASE PLATE TYPE AND B/BASE PLATE ELEVATION RESPECTIVELY.
- F, CF OR RFX(X)-(X-X) INDICATES FOOTING MARK AND T/FOOTING ELEVATION RESPECTIVELY.
- SEE DRAWING S111 & S121 FOR STRUCTURAL AND DESIGN NOTES.
- SEE ARCHITECTURAL DRAWINGS FOR STAIR LOCATIONS.
- SEE ARCHITECTURAL DRAWINGS FOR FLOOR SLOPES AND DRAINS.
- SEE PLUMBING DRAWINGS FOR UNDER FLOOR PLUMBING.
- ALL FOOTINGS SHALL BE CENTERED UNDER COLUMNS OR GROUPS OF COLUMNS AND WALL CENTERLINES U.N.O.
- CONTINUOUS FOOTINGS SHALL BE INTEGRAL WITH COLUMN FOOTINGS.

FOOTING SCHEDULE							
MARK	SIZE			REINFORCEMENT			
	LENGTH	WIDTH	DEPTH	BOT. (LG.)	BOT. (SH.)	TOP. (LG.)	TOP. (SH.)
F3.0	3'-0"	3'-0"	1'-6"	5-#5	5-#5		
F5.0	4'-0"	4'-0"	1'-6"	5-#5	5-#5		
RF	CONT.	5'-0"	1'-6"	5-#5 CONT. W/ #5X2-8" @ 12" TRANSVERSE			
CF3.0	CONT.	3'-0"	1'-6"	4-#5 CONT. W/ #5X2-8" @ 12" TRANSVERSE			

MAKUP FOR NOTE

NOTES:

- SEE DWG S112, S113, S141, S142, S213 THROUGH S216 FOR STRUCTURAL STEEL DESIGN NOTES.
- SEE PLAN FOR TOP OF STEEL ELEVATION.
- ATTACH STEEL DECK TO STEEL WITH 36/43 PATTERN. SUPPORT FASTENERS: 5/8" PUDDLE WELDS. SIDELAP FASTENERS: #10 TEK SCREWS.
- ATTACH DECK TO PERIMETER SUPPORTS WITH SAME FASTENER PATTERN AND TYPE SHOWN ABOVE, BUT SPACING NOT MORE THAN 6".
- ALL STRUCTURAL STEEL, MISCELLANEOUS STEEL AND STEEL JOISTS U.N.O. SHALL BE GIVEN ONE SHOP COAT AND ONE FIELD TOUCH UP PAINT, GRAY COLOR.
- ALL STEEL EXPOSED TO WEATHER SHALL BE HOT DIPPED GALVANIZED AND ALL VENT HOLES SHALL BE PLUGS OR SEAL WELDED PRIOR TO ERECTION.
- 1 1/2", [GALV. G60/PAINTED] TYPE B, 20 GA. METAL DECK FOR ROOF.
- BRIDGING - PROVIDE NUMBER OF ROWS HORIZONTAL ON DIAGONAL BRIDGING OF MATERIAL, SIZE AND TYPE REQUIRED BY SJI'S SPECIFICATIONS FOR TYPE OF JOIST, CHORD SIZE, SPACING AND SPAN. FURNISH ADDITIONAL ERECTION BRIDGING IF REQUIRED FOR STABILITY.
- FOR CONCRETE WALL SUPPORTING JOIST GIRDER, REF. DET. SHEET S501.

SERVICED HOUSE-FLOOR FRAMING PLAN
SCALE: 1/4" = 1'-0"



HAI AN PAGODA
6376 SANDERS ROAD,
LAKE CITY, GA 30286

SERVICED HOUSE-FLOOR FRAMING PLAN

REV.	DATE	BY	DESCRIPTION
B	1/22/18	DT	PERMIT ISSUE

JOB NO. **1710037**
DRAWN: **TB**
CHECKED: **DT**
SCALE: **AS NOTED**

S112
DRAWING NO.