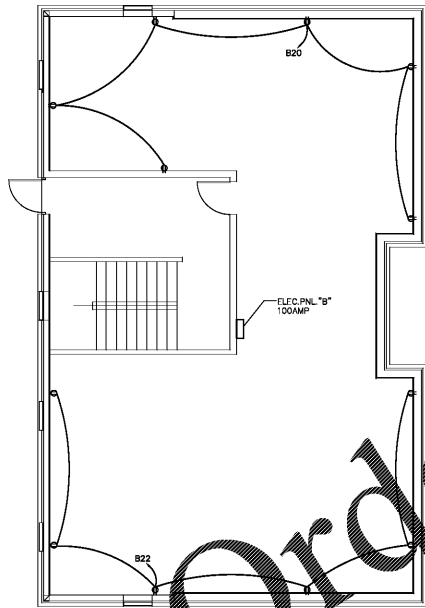


POWER PLAN
1/8" = 1'-0"



PANELBOARD "B" SCHEDULE

CRIT NO	TO SERVE	LOAD KW	CRIT BRKR TRIP POLES	100AMP	M.L.O.	CRIT BRKR LOAD KW	TO SERVE		CRIT NO
							POLES	TRIP	
1	LIGHTS (FRONT/OUTSIDE AREA)	1.0	20/1	—	—	—	RTU #5	5.0TON	2
3	FAN & LIGHTS (RESTROOM)	0.5	20/1	—	—	—			4
5	LIGHTS (BACK AREA)	0.5	20/1	—	—	—			6
7	FAN & LIGHTS (RESTROOM)	1.0	20/1	—	—	—	GFI		8
9	RECEPT (BEDROOM AREA)	0.7	20/1	—	—	20/2	3.0	WATER HEATER	10
11	RECEPT (BEDROOM AREA)	0.7	20/1	—	—	—			12
13	RECEPT (BEDROOM AREA)	0.7	20/1	—	—	20/2	3.0	WATER HEATER	14
15	RECEPT (BEDROOM AREA)	0.5	20/1	—	—	—			16
17	RECEPT (LOBBY AREA)	0.5	20/1	—	—	20/1	1.0	LIGHTS (BASEMENT AREA)	18
19	RECEPT (PENDULRE)	0.5	20/1	—	—	20/1	1.1	RECEPT (BASEMENT AREA)	20
21	RECEPT (RESTROOM)	1.0	20/1	—	—	20/1	1.1	RECEPT (BASEMENT AREA)	22
23	SPARE							SPARE	24
25	SPARE							SPARE	26
27	SPARE							SPARE	28
29	SPARE							SPARE	30
31	SPARE							SPARE	32
33	SPARE							SPARE	34
35	SPARE							SPARE	36
37	SPARE							SPARE	38
39	SPARE							SPARE	40
41	SPARE							SPARE	42

CONNECTED LOAD : 28.5 X 1000 / 1.732 / 208 = 73.8 A

ALL BRANCH BREAKERS NOT SPECIFIED SHALL BE 20 AMP, SINGLE POLE. * HACR BREAKER
ALL BRANCH CIRCUITS CONDUCTORS NOT SPECIFIED SHALL BE #12 WIRE WITH #12 GROUND

PANELBOARD "A" SCHEDULE

CRIT NO	TO SERVE	LOAD KW	CRIT BRKR TRIP POLES	100AMP	M.L.O.	CRIT BRKR LOAD KW	TO SERVE		CRIT NO
							POLES	TRIP	
1	LIGHTS (FRONT AREA)	0.9	20/1	—	—	20/1	0.9	RECEPT (FRONT AREA)	2
3	LIGHTS (FRONT AREA)	0.8	20/1	—	—	20/1	0.5	RECEPT (FRONT AREA)	4
5	LIGHTS (OUTSIDE AREA)	0.6	20/1	—	—	20/1	0.7	RECEPT (FRONT AREA)	6
7	LIGHTS (OUTSIDE AREA)	0.5	20/1	—	—	20/1	0.5	RECEPT (FRONT AREA)	8
9	LIGHTS (BACK AREA)	0.6	20/1	—	—	20/1	0.7	RECEPT (FRONT AREA)	10
11	LIGHTS (BACK/RESTROOM AREA)	1.0	20/1	—	—	20/1	0.4	RECEPT (MASTER BED. AREA)	12
13	WATER HEATER	3.0	20/2	—	—	20/1	0.4	RECEPT (RESTROOM AREA)	14
15						20/1	0.7	RECEPT (LOBBY AREA)	16
17	WATER HEATER	1.5	20/1	—	—	20/1	0.5	RECEPT (CONFERENCE AREA)	18
19	RECEPT (OUTSIDE AREA)	2.1	20/3	—	—	20/1	0.5	RECEPT (KITCHEN AREA)	20
21						20/1	0.9	REFRIGERATOR	22
23	SPARE							SPARE	24
25	SPARE							SPARE	26
27	SPARE							SPARE	28
29	SPARE							SPARE	30
31	SPARE							SPARE	32
33	SPARE							SPARE	34
35	SPARE							SPARE	36
37	SPARE							SPARE	38
39	SPARE							SPARE	40
41	SPARE							SPARE	42

CONNECTED LOAD : 17.7 X 1000 / 1.732 / 208 = 49.2 A

ALL BRANCH BREAKERS NOT SPECIFIED SHALL BE 20 AMP, SINGLE POLE. * HACR BREAKER
ALL BRANCH CIRCUITS CONDUCTORS NOT SPECIFIED SHALL BE #12 WIRE WITH #12 GROUND

PANELBOARD "M" SCHEDULE

CRIT NO	TO SERVE	LOAD KW	CRIT BRKR TRIP POLES	100AMP	M.L.O.	CRIT BRKR LOAD KW	TO SERVE		CRIT NO
							POLES	TRIP	
1	RTU #1 5.0TON	8.2	30/3	—	—	—	—	—	2
3						—			4
5						—			6
7	RTU #3 5.0TON	8.2	30/3	—	—	20/2	3.6	RTU #4 2TON	8
9						—			10
11						20/1	1.0	GFI	12
13	GFI	1.0	20/1	—	—	—		SPARE	14
15	SITE LIGHT	1.0	20/1	—	—	20/1	1.0	SITE LIGHT	16
17	SITE LIGHT	1.0	20/1	—	—	20/1	1.0	SITE LIGHT	18
19	SPARE							SPARE	20
21	SPARE							SPARE	22
23	SPARE							SPARE	24
25	SPARE							SPARE	26
27	SPARE							SPARE	28
29	SPARE							SPARE	30
31	SPARE							SPARE	32
33	SPARE							SPARE	34
35	SPARE							SPARE	36
37	ELEC. PNL. "A"	17.7	100/3	—	—	100/3	28.5	ELEC. PNL. "B"	38
39	SPARE							SPARE	40
41									42

CONNECTED LOAD : 74.4 X 1000 / 1.732 / 208 = 218 A

ALL BRANCH BREAKERS NOT SPECIFIED SHALL BE 20 AMP, SINGLE POLE. * HACR BREAKER
ALL BRANCH CIRCUITS CONDUCTORS NOT SPECIFIED SHALL BE #12 WIRE WITH #12 GROUND

HAI AN PAGODA
5375 SANDERS ROAD
LAKE CITY, GA 30260



CUSTOM DESIGN & DEVELOPMENT CORPORATION
6780 WUPOND HWY.
SUITE 200
NORCROSS, GA 30071
TEL: (770)-226-8888
FAX: (678)-278-3888

POWER PLAN
NOTES & SCHEDULE

REVISION	BY

DRAWN BY:
SCALE: AS NOTED
PROJECT NO:
DATE: 06/06/17
SHEET

E2
OF SHEETS