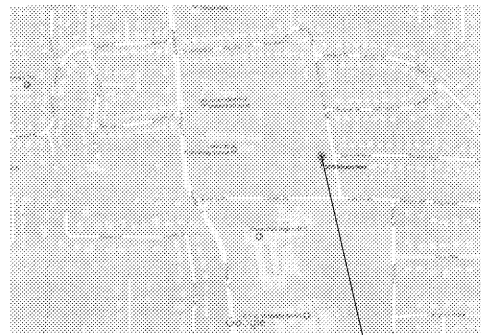
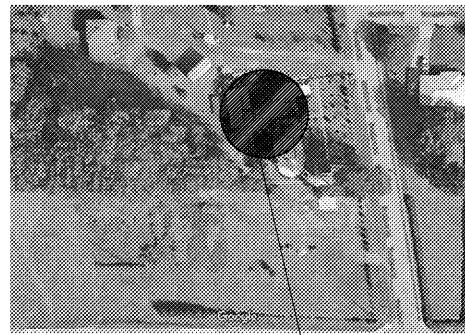


PROJECT NAME

**HAI AN PAGODA**  
 5375 SANDERS ROAD  
 LAKE CITY, GA 30260



SITE PLAN  
N.T.S.



KEY PLAN  
N.T.S.



CONTACT LIST

<b>ARCHITECT:</b> CHUNG CHENG CHANG GEORGIA REG.#: 5259 5720 BUFORD HWY SUITE#305 NORCROSS, GA 30071 PHONE #: 770-326-9868	<b>OWNER:</b> THANH LOAN THI PHAM 5375 SANDERS ROAD LAKE CITY PHONE #: 404-729-6707
<b>CIVIL:</b> DIGITAL EXPRESSIONS, INC. DINO PATEL GEORGIA REG.#: 5259 PHONE #: 404-723-0932	<b>ELECTRICAL ENGINEER:</b> CHARLIE BOOTH GEORGIA REG.#: 5259 PHONE #: 404-680-2000
<b>STRUCTURE:</b> ENGQUEST DAVID TAN GEORGIA REG.#: 5259 PHONE #: 678 906-4670	<b>MECHANICAL ENGINEER:</b> JACK JOHNSON GEORGIA REG.#: 5259 PHONE #: 770-527-3050

GENERAL CODES

-International Building Code (IBC) 2012 Edition with 2014, 2015 & 2017 Georgia State Amendments  
 -National Electrical Code (NEC): 2017 Edition  
 -International Fuel Gas Code (IFGC) 2012 Edition with 2014 & 2015 Georgia State Amendments  
 -International Mechanical Code (IMC) 2012 Edition with 2014 & 2015 Georgia State Amendments  
 -International Plumbing Code (IPC): 2012 Edition with 2014 & 2015 Georgia State Amendments and 2017 Georgia State Amendments  
 -International Energy Conservation Code (IECC): 2009 Edition with 2011 & 2012 Georgia State Amendments  
 -International Swimming Pool and Spa Code, 2012 Edition with 2014 Georgia State Amendments  
 -International Existing Building Code (IEBC): 2012 Edition with 2015 Georgia State Amendments  
 -International Residential Code for One & Two Family Dwellings (IRC): 2012 Edition with 2014 & 2015 Georgia State Amendments, and "IRC Appendix F"  
 -Gwinnett County Construction Code (2015 Edition)

**FIRE CODES:**  
 -Gwinnett County Ordinance for Fire Protection and Life Safety  
 -NFPA Codes and Standards: Current Edition (\*)  
 -NFPA 101 Life Safety Code: 2012 Edition (\*)  
 -International Fire Code (IFC): 2012 Edition with 2014 Amendments (\*)  
 (Referenced codes are modified by the State Fire Marshal per Ch. 120 of Rules and Regulations of the Safety Fire Commission)  
 -O.C.G.A. Title 25 (State Fire Law)  
 -O.C.G.A. Title 30 (Access to and Use of Public Facilities by Persons with Disabilities)  
 -2010 ADA Standards

PROJECT CRITERIA

INTERIOR FINISH CODE COMPLIANCE REPORT

DATE OF REVIEW: \_\_\_\_\_ FILE # \_\_\_\_\_  
 NAME OF DEVELOPMENT: HAI AN PAGODA  
 LOCATION OF DEVELOPMENT: 5375 SANDERS ROAD LAKE CITY, GA 30260  
 ARCHITECT: CHUNG C. CHANG PHONE #: 770-326-9868 GEORGIA REG. #: 5259  
 STRUCTURAL ENGINEER: N/A PHONE: \_\_\_\_\_ GEORGIA REG. #: N/A  
 A. Occupancy Classification: ASSEMBLY  
 B. Type of Construction: II B Sprinklered ( YES or NO): NO  
 C. Seismic Use Group: II Seismic Design Category: C  
 D. Total Interior Finish Area (sq. ft.): MAIN BUILDING 1900 SURVICE BUILDING 1900 Fire Alarm ( YES or NO): NO  
 E. Floor level: FIRST Mezzanine: N/A Mezzanine: N/A  
 F. Floor level: FIRST Total number of stories in building: SURVICE BUILDING ONE FLOOR MAIN BUILDING ONE FLOOR SURVICE BUILDING TWO FLOOR  
 G. Calculated Occupancy Load: 277(SEE AO.2 CALCULATION)  
 H. Required Minimum Floor Live Load (PSF): 100

INDEX TO SHEETS

CIVIL

- C0 COVER SHEET
- C1 DEMOLITION PLAN
- C2 LAYOUT PLAN
- C3 GRADING AND DRAINAGE PLAN
- C4 STORM PROFILES
- C5 PLANTING PLAN
- C6 INITIAL SEDIMENT & EROSION CONTROL
- C7 INTERMEDIATE SEDIMENT & EROSION CONTROL
- C8 FINAL SEDIMENT & EROSION CONTROL
- C9 EROSION NOTES
- C10 EROSION CONTROL NOTES
- C11 EROSION CONTROL DETAILS
- C12 CONSTRUCTION DETAILS & DRAINAGE PLAN
- C13 MISC. DETAILS
- C14 MISC. DETAILS

ARCHITECTURAL

- A0.1 COVER SHEET
- A0.2 WALL TYPES, NOTES & SCHEDULES
- A0.3 FIRE DETAILS
- A0.4 LIFE SAFETY PLAN
- A1.1 FLOOR PLANS, ROOM NAMES & DIMENSIONS
- A1.2 CEILING PLANS
- A1.3 ROOF PLAN, NOTES
- A2.0 EXTERIOR ELEVATIONS
- A3.1 BUILDING SECTIONS
- A3.2 BUILDING SECTIONS
- A3.3 BUILDING SECTIONS
- A4.1 WALL SECTIONS
- A4.2 WALL SECTIONS
- A4.3 WALL SECTIONS
- A5.1 BUILDING DETAILS
- A5.2 BUILDING DETAILS
- A6 DOORS, WINDOWS AND FINISHES

ELECTRICAL

- E1 GENERAL LIGHTING PLAN, NOTES & SCHEDULES
- E2 LIGHTING PLAN, NOTES & SCHEDULES
- E3 POWER PLAN, NOTES & SCHEDULES
- E4 SITE LIGHTS AND NOTES

HVAC

- M1 HVAC PLAN, NOTES & SCHEDULES
- M2 HVAC DETAILS

PLUMBING

- P1 PLUMBING PLAN, NOTES & SCHEDULES
- P2 PLUMBING RISER DIAGRAMS

STRUCTURAL

- S001 GENERAL NOTES
- S002 GENERAL NOTES
- S003 3D VIEW
- S111 SERVICE HOUSE FOUNDATION
- S112 SERVICE HOUSE FLOOR FRAMING PLAN
- S113 SERVICE HOUSE ROOF FRAMING PLAN
- S121 PAGODA FOUNDATION AND SLAB PLAN
- S141 PAGODA FOOT FRAMING PLAN
- S142 TOWER ROOF FRAMING PLAN
- S211 STRUCTURAL ELEVATION ALONG LINE "E"
- S4.1 FRAMING SECTIONS
- S4.2 FRAMING SECTIONS

GENERAL NOTE

1. CONSTRUCTION SHALL HAVE A FIRE RESISTANCE RATING EQUAL TO OR GREATER THAN THE FIRE RESISTANCE RATING OF ALL CONSTRUCTION WHICH IT SUPPORTS.(SBC SECTION 601.36.2).
2. THE CONTRACTOR SHALL OBTAIN INSURANCE ADEQUATE IN COVERAGE TO INSURE ALL MATERIAL STORED ON OR OFF SITE AND ALL WORK IN PLACE AND SHALL PROVIDE LIABILITY INSURANCE DURING THE CONSTRUCTION PROCESS UNTIL SUCH TIME THAT THE BUILDING IS ACCEPTED BY OWNER FOR OCCUPATION.
3. ALL EQUIPMENT SHALL BE FURNISHED BY THE OWNER AND INSTALLED BY CONTRACTOR.
4. THE CONSTRUCTOR SHALL VERIFY ALL DIMENSIONS AND SITE CONDITIONS BEFORE CONSTRUCTION. THE ARCHITECT SHALL BE INFORMED TO ANY DISCREPANCY.
5. ALL MATERIAL AND WORKMANSHIP SHALL CONFIRM TO THE LATEST ADDITION OF THE STANDARD BUILDING CODE, NATIONAL PLUMBING CODE, NATIONAL ELECTRICAL CODE, OSHA REGULATIONS AND THE REQUIREMENTS OF STATE AND LOCAL AUTHORITIES HAVING JURISDICTION.
6. THE CONSTRUCTOR SHALL VERIFY ALL FLOOR AND ROOF MOUNTED MECHANICAL EQUIPMENT WEIGHTS, FLOOR/CEILING AND ROOF OPENINGS, SIZES AND LOCATIONS WITH ARCHITECTURAL AND MECHANICAL DRAWINGS.
7. THE CONTRACTOR SHALL COORDINATE AND INSURE THAT THE ARCHITECTURAL CIVIL, MECHANICAL, ELECTRICAL AND PLUMBING WORKS WITH THE STRUCTURAL.
8. ALL INTERIOR FINISHES SHALL BE CLASS "A" MIN. FLAME SPREAD AS PER CODE.
9. ALL ELECTRICAL FIXTURES AND EQUIPMENTS SHALL BE U.L. LISTED.
10. DISABLED ACCESSIBLE REST ROOMS SHALL HAVE AN UNOBSTRUCTED CLEAR FLOOR SPACE OF 5' DIAMETER CIRCULAR AREA OR "T" SHAPE SPACE FOR MANEUVERING 180 DEGREE. ALL AISLE, MEASURING 3' WIDE. THE PERPENDICULAR AISLE BEING 5' LONG LATERAL AISLES EXTENDING 1' EITHER SIDE OF THE 2' WIDE.
11. A SIGN CLEARLY STATING THAT SMOKING IS PROHIBITED SHALL BE CONSPICUOUSLY POSTED WITHIN EACH BUILDING AND AT EACH BUILDING ENTRANCE FOR COMPLIANCE WITH COUNTY CLEAN INDOOR AIR ORDINANCE. ACCEPTABLE SIGNS SHALL DISPLAY EITHER "NO SMOKING" OR THE INTERNATIONAL "NO SMOKING"(CONSISTING OF A PICTORIAL REPRESENTATION OF A BURNING CIGARETTE ENCLOSED IN A RED CIRCLE WITH A RED BAR ACROSS IT).
12. SMOKING IS PROHIBITED IN ALL ENCLOSED PUBLIC PLACES AND IN ALL ENCLOSED AREAS WITHIN PLACES OF EMPLOYMENT IN ACCORDANCE WITH COUNTY CLEAN INDOOR AIR ORDINANCE.
13. SIGNS, LOCATION, NUMBER AND SIZE ARE NOT APPROVED UNDER THIS BUILDING PERMIT. A SEPARATE SIGN LOCATION PERMIT IS REQUIRED FOR EACH SIGN. CONTACT DEVELOPMENT REVIEW FOR ADDITIONAL FOR INFORMATION.

HAI AN PAGODA

5375 SANDERS ROAD  
LAKE CITY, GA 30260



CUSTOM DESIGN  
&  
DEVELOPMENT  
CORPORATION  
8780 BUFORD HWY.  
SUITE 300  
ATLANTA GA 30340

TEL: (770)-338-9868  
FAX: (770)-278-9868

COVER SHEET  
NOTES & SCHEDULE

REVISION	BY

DRAWN BY:  
SCALE: AS NOTED  
PROJECT NO:  
DATE: 11/28/16  
SHEET

**A0.1**  
OF SHEETS