

GENERAL NOTES:

- A. ALL PLUMBING MATERIALS AND PLUMBING WORK SHALL MEET THE REQUIREMENTS OF THE INTERNATIONAL PLUMBING CODE AND LOCAL CODES.
- B. ALL UNDERGROUND AND EXTERIOR WATER PIPING SHALL BE TYPE K COPPER WITH POLY BAG.
- C. ALL INTERIOR WATER PIPING SHALL BE TYPE L HARD COPPER.
- D. PIPING FOR SOIL WASTE AND VENTS SHALL BE SCHEDULE 40 PVC.
- E. PROVIDE $\frac{1}{8}$ " PER FOOT SLOPE ON ALL SOIL AND WASTE PIPING MINIMUM.
- F. FLASH ALL VENTS THROUGH ROOF. OFFSET ALL VENTS MINIMUM OF 20'-0" FROM ALL OUTSIDE AIR INTAKES.
- G. VENT PIPES SHALL EXTEND AT LEAST 6" ABOVE ROOF OR AS INDICATED.
- H. ADEQUATELY SUPPORT ALL HORIZONTAL PLUMBING LINES AS REQUIRED FOR DRAINAGE.
- I. COMPACT BACK FILL IN PIPE TRENCHES TO MATCH ADJACENT SOIL.
- J. PLACE BURIED WASTE AND SOIL PIPE IN SAND BEDDING.
- K. PROVIDE ESCUTCHEON PLATES ON LINES PENETRATING WALLS.
- L. PROVIDE SLEEVES WHERE PIPES PROJECT THROUGH CONCRETE WALLS OR FOOTINGS AND PROVIDE FOR PREVENTION OF WATER PASSING THROUGH THESE OPENINGS.
- M. INSULATE ALL COLD WATER LINES. USE 1" THICK SPLIT PRE FORMED FIBERGLASS TUBES PROPERLY SEALED AND VAPOR PROOFED.
- N. FILL POTABLE WATER SYSTEM WITH CHLORINE AND WATER SOLUTION AND FLUSH PRIOR TO USE.
- O. PRESSURE TEST WATER SYSTEM IN ACCORDANCE WITH PLUMBING CODE REQUIREMENTS.
- P. PROVIDE ALL CODE REQUIRED CLEAN OUTS AND VALVES NECESSARY FOR COMPLETE PLUMBING WORK.
- Q. COORDINATE WITH ALL OTHER TRADES INVOLVED IN THE PROJECT.
- R. UPON COMPLETION OF PROJECT, PROVIDE OWNER WITH BOUND SET OF ALL GUARANTEES AND WARRANTIES, OPERATING AND MAINTENANCE MANUALS.
- S. COORDINATE WITH UTILITY COMPANIES AND CITY FOR INSTALLATION OF CONSTRUCTION AND INSTALLATION OF METERS AND SHUT OFF VALVES.
- T. PAY ALL FEES FOR PERMITS ON PLUMBING WORK.
- U. HOT WATER AND DRAIN PIPES UNDER LAVATORIES SHALL BE INSULATED OR OTHERWISE COVERED. THERE SHALL BE NO SHARP OR ABRASIVE SURFACES UNDER LAVATORIES.
- V. WHERE THERE IS CONFLICT WITH THESE DOCUMENTS AND THE CODES THE MORE STRINGENT OF THE TWO WILL APPLY.
- W. CONTRACTOR IS EXPECTED TO INSPECT THE SITE AND TO PROVIDE ALL NECESSARY LABOR, MATERIALS AND MISCELLANEOUS ITEMS NECESSARY TO COMPLETE THE JOB WITHIN THE CODE AND WITH ALL ALLOWANCES MADE. NO ADDITIONAL CHARGES WILL BE ALLOWED.
- X. CONTRACTOR SHALL FOLLOW ALL MANUFACTURE'S DIRECTION FOR INSTALLATION OF EQUIPMENT.
- Y. WATER AND SPRINKLER PIPING SHALL BE STEEL WITH JOINTS ADEQUATELY SEALED. SUPPORT INSIDE WITH HANGERS IN SUCH A MANNER SO AS NOT TO INTERFERE WITH OTHER SERVICES AND DUCTWORK. PROVIDE EXPANSION LOOPS AS REQUIRED TO TO PREVENT MOVEMENT. COORDINATE ADDITIONAL STRUCTURAL LOAD WITH STRUCTURAL ENGINEER BEFORE ORDERING BUILDING OR STRUCTURAL MATERIALS. FAILURE TO COORDINATE THIS ITEM WITH STRUCTURAL ENGINEER SHALL MAKE THE CONTRACTOR LIABLE TO REPLACE ANY PART OR ASSEMBLY DEEMED NOT ADEQUATE BY THE ENGINEER.
- Z. SPRINKLER SYSTEM SHALL BE ORDINARY HAZARD, ESFR DESIGN/BUILD.
- AA. INSTALL ALL BACKFLOW PREVENTERS IN ACCESSIBLE LOCATION PER LOCAL CODE REQUIREMENTS. PROVIDE REQUIRED CLEARANCES, SUPPORTS AND ACCESS AS REQUIRED.
- BB. ALL FLOOR DRAINS SHALL BE PROTECTED WITH A TRAP PRIMER.

SEWER CONSTRUCTION NOTES:

- A. CONTRACTOR SHALL STUB OUT SEWER LINES IN CONSTRUCTION LEAVE OUT AREAS AS NOTED.
- B. CONTRACTOR SHALL REFER TO STRUCTURAL DRAWINGS FOR SEWER PASS THROUGH GRADE BEAMS.

WATER CONSTRUCTION NOTES:

- A. CONTRACTOR SHALL INSTALL WATER METER ENCLOSURES FLUSH WITH FINISH.

WATER LINE SIZE:

- A. DOMESTIC WATER LINE SIZED BY ESTIMATING FIXTURE UNITS MOSTLY FLUSH TANKS FOR SMALL BUILDING.
- B. WATER LINES WILL CHANGE SIZES WHEN LOADS ARE KNOWN AND DISTRIBUTION PIPING WILL BE MODIFIED TO MEET THE DEMAND AND REDUCE IN DISTRIBUTION SIZES.

GENERAL CONSTRUCTION NOTES:

- A. CONTRACTOR SHALL COMPACT DIRT TO 95 PROCTOR UNDER STREET AND WALK AREAS. THIS APPLIES TO ALL UTILITY SERVICES AND SITE LIGHTING. COMPACT TO 90% PROCTOR UNDER NON TRAFFIC AREAS.
- B. CONTRACTOR SHALL INSTALL TOP OF PIPING TO ELEVATIONS SHOWN ON CIVIL ENGINEERING DRAWINGS.
- C. CONTRACTOR SHALL USE SURVEYORS TO LAYOUT POSITIONS OF PIPING AND SET ELEVATIONS.
- D. LOCATIONS OF UTILITIES ARE TAKEN FROM WORK BY OTHERS. CIVIL SURVEY AND LOCATIONS TAKE PRECEDENCE OVER THESE DRAWINGS. CONTRACTOR SHALL FIELD VERIFY UTILITY LOCATIONS AND ALLOW FOR ALL WORK TO MAKE THIS WORK COMPLETE. NO ADDITIONAL CHARGES SHALL BE ALLOWED

GAS LINE SIZING

- A. CONTRACTOR SHALL REDUCE PIPE TO MEET REQUIREMENTS BY INTERNATIONAL FUEL CODE.
- B. CONTRACTOR SHALL NOT PLACE ANY GAS PIPING BELOW SLAB.
- C. CONTRACTOR SHALL ADJUST PRESSURE OF GAS PIPE IF LENGTH OF PIPE EXCEEDS FLOW ALLOWANCE OF 3" PIPE PER INTERNATIONAL FUEL GAS CODE TABLE 402.3(2) AND COORDINATE WITH UTILITY COMPANY.

FIXTURE SCHEDULE:

FS, FLOOR SINK. JR SMITH-3151-12 CAST IRON FLANGED RECEPTOR WITH SEEPAGE HOLES, ACID RESISTANT COATED INTERIOR, NICKEL BRONZE RIM AND SECURED 1/2 GRATE, ALUMINUM SEDIMENT BUCKET OR WATTS DRAINAGE FS-740-1-5, JOSAM #49340A-NB.

NEWH, NON-FREEZE WALL HYDRANT. JR SMITH 55090T-CL BRONZE QUARTER TURN NON-FREEZE AUTOMATIC DRAINING HYDRANT WITH STAINLESS STEEL FACE, HOSE CONNECTION, INTEGRAL VACUUM BREAKER, "T" HANDLE AND STAINLESS STEEL BOX OR WATTS DRAINAGE HY-725-88K.

IP, PRECISION PLUMBING PRODUCTS, INC. #P-1 TRAP PRIMER VALVE, 1/2" SUPPLY FROM TOP OF MAIN TO VALVE, 1/2" SUPPLY TO EACH FLOOR AND/OR HUB DRAIN, DISTRIBUTION UNIT AS REQUIRED OR WATTS DRAINAGE A-200.

RPBP, WATTS LF009 LEAD FREE REDUCED PRESSURE BACKFLOW PREVENTER, FURNISHED STANDARD WITH THREADED CONNECTIONS, QUARTER-TURN BALL VALVES AND Y-STRAINER, INSTALL NO MORE THAN 48" ABOVE FINISHED FLOOR AND EXTEND RELIEF DRAIN PIPING TO EXTERIOR OF THE BUILDING.

FCO, FLOOR CLEANOUT. JR SMITH - 4031L DUCO CAST IRON CLEANOUT WITH ROUND ADJUSTABLE SCORIATED SECURED NICKEL BRONZE TOP WITH ABS GASKET SEAL PLUG OR WATTS DRAINAGE CO-200-R.

DCO, DOUBLE CLEANOUT. JR SMITH-4880 DUCO CAST IRON DOUBLE FLANGED CLEANOUT HOUSING WITH HEAVY DUTY SECURED SCORIATED CAST IRON COVER WITH LIFTING DEVICE OR WATTS DRAINAGE CO-300-MF.

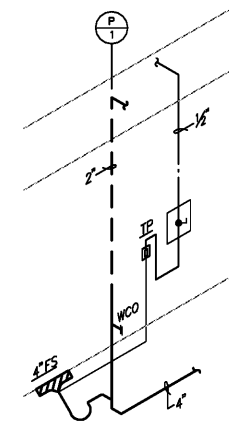
GCO, GRADE CLEANOUT. JR SMITH-4231 ROUND EXTRA HEAVY DUTY CAST IRON TOP DUCO CAST IRON CLEANOUT OR WATTS DRAINAGE CO-380.

LEGEND

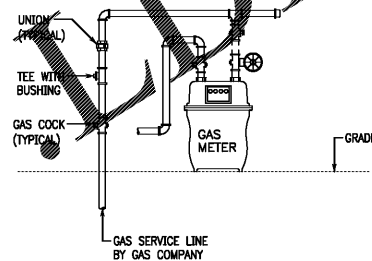
— W —	— W —	U.G. DOMESTIC WATER LINE
— SS —	— SS —	U.G. SANITARY SEWER LINE
— GW —	— GW —	U.G. GREASE WASTE LINE
— G —	— G —	U.G. GAS LINE

CONSTRUCTION FEATURES:

- 1. UTILITY LEAVE OUTS.
- 2. ONE (1) HOUR DEMISING WALL.
- 3. INDIVIDUALLY GAS METERED.
- 4. NO INDIVIDUAL WATER METERS.

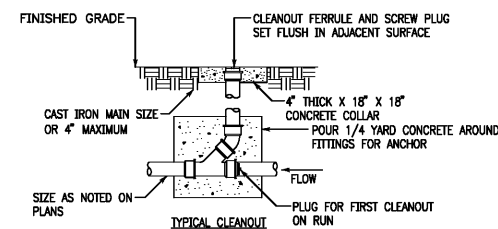


1 PLUMBING RISER DIAGRAM
SCALE: NONE



NOTE:
THE MULTIPLE GAS METER MANIFOLD DETAIL AS SHOWN IS TO BE USED BY THE CONTRACTOR FOR REFERENCE ONLY. CONTRACTOR SHALL COORDINATE THE FINAL DESIGN OF THE MANIFOLD WITH THE CITY AND THE LOCAL GAS COMPANY. THE FINAL DESIGN SHALL COMPLY WITH THE REQUIREMENTS ESTABLISHED IN NFPA 54 "NATIONAL FUEL GAS CODE", INTERNATIONAL PLUMBING CODE AND THE GAS SUPPLY COMPANY INSTALLATIONS DETAILS. THE CONTRACTOR SHALL INSTALL THE MULTIPLE GAS METER MANIFOLD IN ACCORDANCE WITH THE APPLICABLE REQUIREMENTS AT NO ADDITIONAL COST TO THE OWNER. FINAL SIZES SHALL BE INSTALLED AS DIRECTED AND APPROVED THE CITY AND THE LOCAL GAS COMPANY.

2 GAS METER MANIFOLD
SCALE: NONE



NOTE:
WHERE CLEANOUTS OCCUR IN FINISHED FLOOR, PROVIDE SATIN FINISH NICKALDY TOP FLUSH IN FLOOR

3 INTERIOR CLEANOUT DETAIL
SCALE: NONE



John Framy Architect
ARCHITECTURE-INTERIOR ARCHITECTURE-PLANNING (817) 737-8678
605 INTERNATIONAL PLAZA, SUITE 100 FORT WORTH, TEXAS 76109

SHELL BUILDING
1855 CEDAR CREEK ROAD
FAYETTEVILLE, NORTH CAROLINA 28312

Revisions:

File Name: 19086
Project No: 19086
Date: 10/11/19
Drawn By:
Checked By:

SHEET
P301
PLUMBING
DETAILS

Gregory C. Speer
5020 Tennyson Pkwy. - Plano, TX 75024
Phone (214) 432-3030 / Fax (214) 618-8191

CONTRACTOR SHALL COORDINATE
MEP DRAWINGS WITH ALL OTHER
DISCIPLINES

AOS JOB #: 2568-009-19