

John Franz Architect
ARCHITECTURE-INTERIOR ARCHITECTURE-PLANNING (817) 337-8678
605 INTERNATIONAL PLAZA, SUITE 100, FORT WORTH, TEXAS 76109

SHELL BUILDING
1855 CEDAR CREEK ROAD
FAYETTEVILLE, NORTH CAROLINA 28312

Revisions:
11/01/19
Tenant Comments

File Name: 19086
Project No: 19086
Date: 10/11/19
Drawn By:
Checked By:

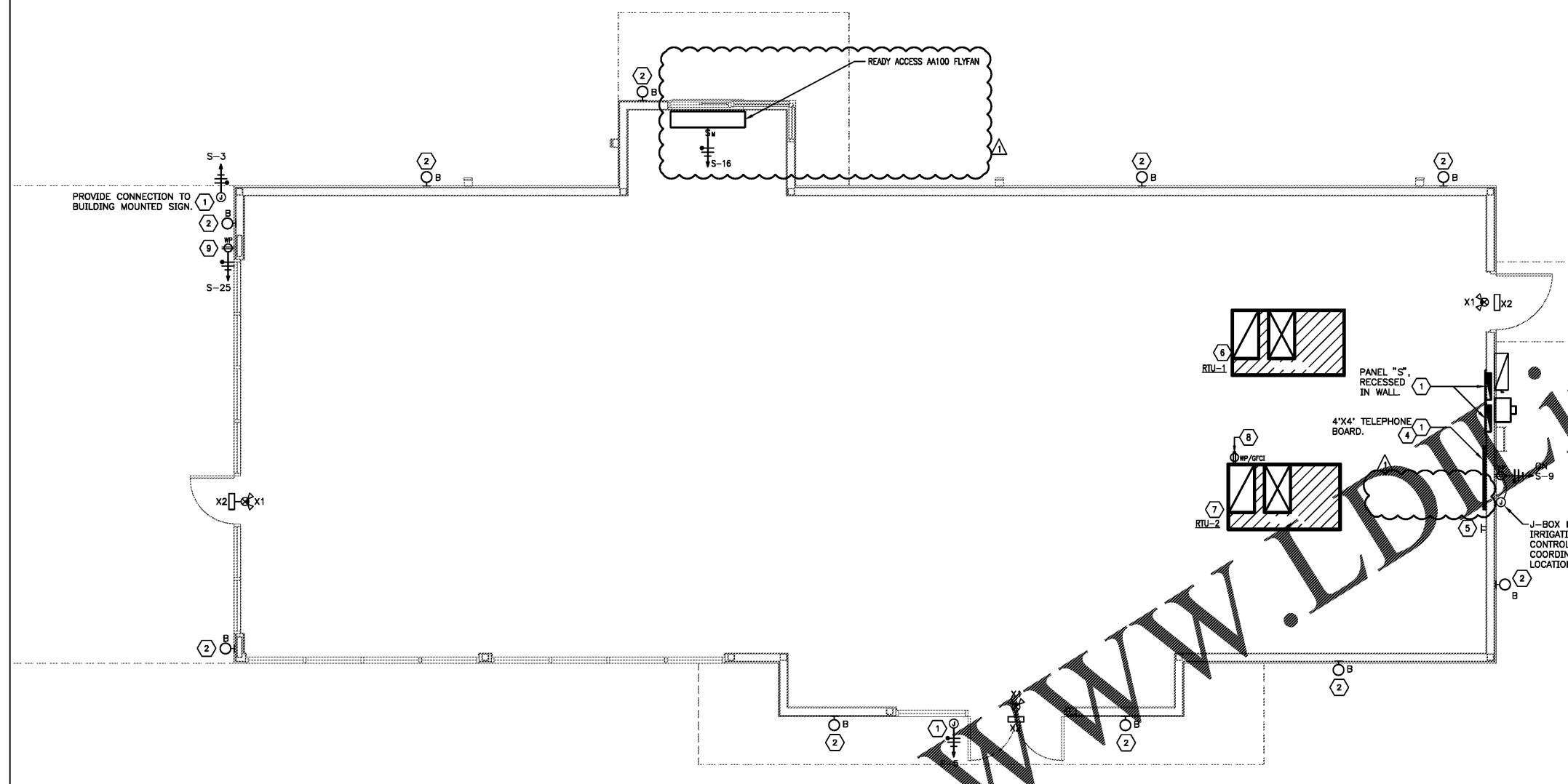
SHEET
E201
ELECTRICAL
FLOOR PLAN

GENERAL NOTES:

- A. ALL CIRCUIT NUMBERS SHOWN FOR LOCATION AND QUANTITY ONLY. VERIFY EXACT NUMBERS IN FIELD. CONTRACTOR SHALL INSTALL EQUIPMENT SHOWN IN RISER DIAGRAM ON SHEET E301 TO PROVIDE REQUIRED CIRCUITS. PRICE THE INSTALLATION OF NEW EQUIPMENT WHEN SUBMITTING BID. COORDINATE EXACT LOCATION OF NEW EQUIPMENT WITH BUILDING ENGINEER PRIOR TO INSTALLATION. CONTRACTOR TO VERIFY LOAD DOES NOT EXCEED PANEL CAPACITY. CONTACT AOS-ENGINEERING IF DISCREPANCY OCCURS. UPDATE PANEL SCHEDULES WHEN WORK IS COMPLETED.
- B. REFER TO ARCHITECTURAL DRAWINGS FOR ADDITIONAL SYMBOL LEGENDS, DEMOLITION, CONSTRUCTION NOTES AND POWER SPECIFICATIONS.
- C. TURN OFF ALL "SPARE" CIRCUIT BREAKERS AND LABEL.
- D. ALL 120-VOLT BRANCH CIRCUITS SHALL BE 3-WIRE (HOT, NEUTRAL AND GROUND). WHERE HOMERUN IS SHOWN TO SERVE A SINGLE DEVICE, THE BRANCH CIRCUIT SHALL HAVE DEDICATED GROUND AND NEUTRAL CONDUCTORS.
- E. PROVIDE DEEP DOUBLE GANG JUNCTION BOX WITH SINGLE GANG MASTER RING WITH (1) 3/4" C. FROM EACH TELEPHONE, DATA OR COMMUNICATION OUTLET INDICATED, TO EXPOSE ACCESSIBLE CEILING AND CAP. CONDUIT SHALL INCLUDE 1/4" POLYPROPYLENE FILL WIRE INSTALLED IN EMPTY CONDUIT.
- F. CONTRACTOR TO PROVIDE CODE MINIMUM FIRE ALARM SYSTEM. INSTALLATION SHALL MEET ALL APPLICABLE LOCAL, STATE, AND NATIONAL CODES. VERIFY ALL FIRE ALARM DEVICE LOCATIONS WITH ARCHITECT PRIOR TO INSTALLING BOXES.
- G. VERIFY EXACT LOCATION OF ALL MECHANICAL AND PLUMBING EQUIPMENT WITH MECHANICAL AND PLUMBING CONTRACTOR PRIOR TO INSTALLATION.
- H. CONNECT UN-SWITCHED EMERGENCY FIXTURES AHEAD OF ANY SWITCHES AND/OR RELAYS. REFER TO DETAIL 6 ON SHEET E301 FOR UN-SWITCHED EMERGENCY FIXTURE DETAIL.
- I. REFER TO ARCHITECTURAL DRAWINGS FOR ADDITIONAL SYMBOL LEGENDS, DEMOLITION, CONSTRUCTION NOTES AND LIGHTING SPECIFICATIONS.

KEY NOTES:

- 1. COORDINATE EXACT LOCATION OF DEVICE OR EQUIPMENT WITH STARBUCKS PRIOR TO ROUGH-IN OR INSTALLATION.
- 2. FUTURE LIGHT FIXTURE (AWNEX# OD785-FINISH-LED-W) TO BE PROVIDED & INSTALLED BY LANDLORD. PROVIDE CONDUIT STUB-OUT AND J-BOX IN WALL AS REQUIRED. COORDINATE EXACT LOCATION AND REQUIREMENTS WITH STARBUCKS.
- 3. NOTE NOT USED.
- 4. PROVIDE UL-LABELED FIRE-RETARDANT PLYWOOD BACKBOARD FOR TELEPHONE/DATA EQUIPMENT. ROUTE NEW 2" CONDUIT WITH PULL STRINGS FROM TENANT'S PHONE BOARD TO TELEPHONE PEDESTAL DEMARCATION ON EXTERIOR OF BUILDING. CONDUIT TO BE LABELED WITH SUITE NUMBER AT J-BOX. COORDINATE ROUTING WITH ARCHITECT PRIOR TO BID. VERIFY BACKBOARD AND CONDUIT SIZE WITH TENANT I.T. CONSULTANT. VERIFY EXACT LOCATION WITH TENANT PRIOR TO BID.
- 5. CONTRACTOR TO INSTALL WALL MOUNTED COPPER GROUND BAR AS SHOWN. ROUTE 1-#6 INSULATED GROUND WIRE FROM BUILDING GROUND RISER TO GROUND BAR. COORDINATE EXACT LOCATION OF BAR AND BRANCH GROUND WIRING REQUIREMENTS OUT FROM BAR WITH TENANT PRIOR TO PURCHASE AND INSTALLATION.
- 6. RTU-1, CONNECT TO S-11/13/15 VIA 3#6, 1#10G IN 3/4" C. PROVIDE (60A/3P/3R) DISCONNECT ADJACENT TO RTU. COORDINATE WITH MECHANICAL FOR EXACT LOCATION.
- 7. RTU-2, CONNECT TO S-17/19/21 VIA 3#6, 1#10G IN 3/4" C. PROVIDE (60A/3P/3R) DISCONNECT ADJACENT TO RTU. COORDINATE WITH MECHANICAL FOR EXACT LOCATION.
- 8. CONTRACTOR TO PROVIDE AND INSTALL WP/GFCI SERVICE RECEPTACLE LOCATED WITHIN 25'-0" OF ALL NEW ROOF MOUNTED EQUIPMENT. CONNECT TO CIRCUIT A-23 VIA 1#12, 1#12N 1#12G IN 3/4" C. COORDINATE WITH MECHANICAL AND ARCHITECT FOR EXACT LOCATION.
- 9. PROVIDE AND INSTALL A NEW RECEPTACLE TO PROVIDE POWER FOR EXTERIOR CANOPY TWINKLE LIGHTS. COORDINATE WITH ARCHITECT FOR EXACT LOCATION AND REQUIREMENTS PRIOR TO INSTALLATION.



1 FLOOR PLAN - LIGHTING
SCALE: 1/4" = 1'-0"

Order Plans @

FIRE ALARM NOTE
THE FIRE ALARM CONTRACTOR IS RESPONSIBLE FOR DESIGN, DESIGN APPROVAL, INSTALLATION AND FINAL ACCEPTANCE BY THE AUTHORITIES HAVING JURISDICTION. FINAL DEVICE QUANTITIES AND LOCATIONS ARE THE RESPONSIBILITY OF THE CONTRACTOR.

Gregory C. Speer
5020 Tennyson Pkwy. - Plano, TX 75024
Phone (214) 432-3030 / Fax (214) 618-8191

CONTRACTOR SHALL COORDINATE MEP DRAWINGS WITH ALL OTHER DISCIPLINES

AOS JOB #: 2568-009-19