

**John Frantz Architect**  
 ARCHITECTURE-INTERIOR ARCHITECTURE-PLANNING (817) 737-8678  
 605 INTERNATIONAL PLAZA, SUITE 100 FORT WORTH, TEXAS 76109

**SHELL BUILDING**  
 1855 CEDAR CREEK ROAD  
 FAYETTEVILLE, NORTH CAROLINA 28312

Revisions:  
 11/01/19  
 Tenant Comments

File Name: 19086  
 Project No: 19086  
 Date: 10/11/19  
 Drawn By:  
 Checked By:

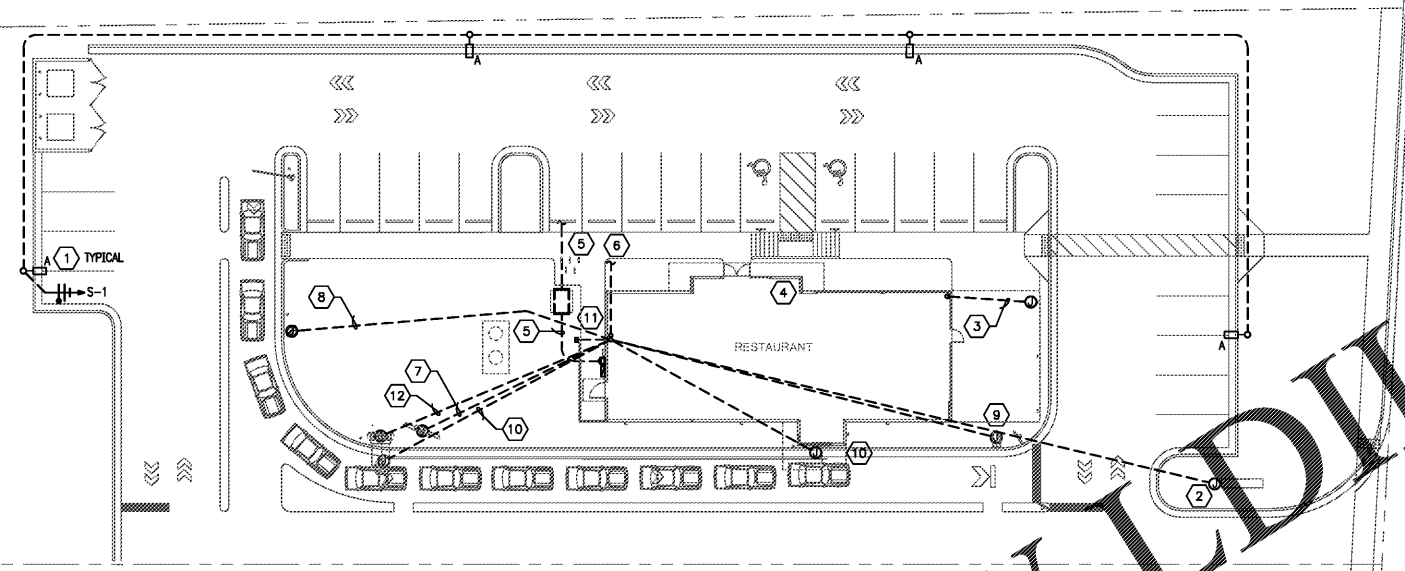
SHEET  
**E101**  
 ELECTRICAL  
 SITE PLAN

**GENERAL NOTES:**

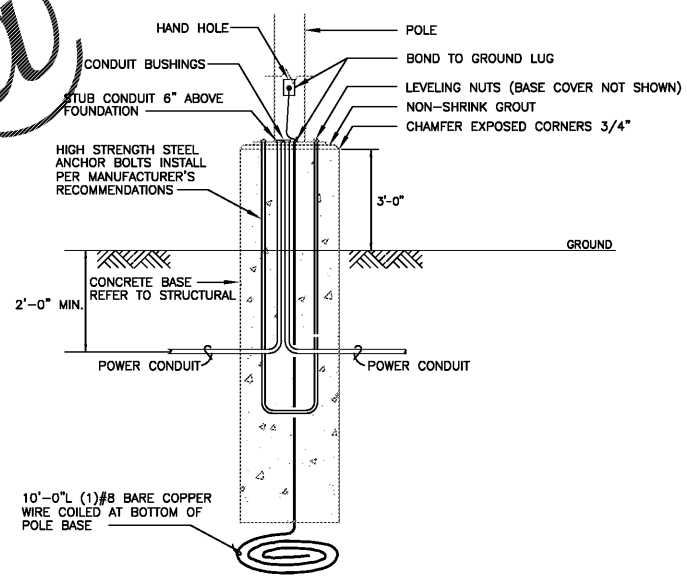
- A. CONTRACTOR SHALL COORDINATE EASEMENT ON CENTERLINE OF UNDERGROUND PRIMARY WITH UTILITY COMPANY.
- B. CONTRACTOR SHALL COORDINATE PLACEMENT AND ROUTING OF CONDUITS WITH UTILITY COMPANY PRIOR TO INSTALLATION. COORDINATE EXACT CONDUIT SIZES AND QUANTITIES WITH UTILITY COMPANY PRIOR TO INSTALLATION.
- C. THE ELECTRICAL INFORMATION SHOWN ON THIS PLAN IS BASED ON INFORMATION AVAILABLE AT THE TIME OF DESIGN. SPECIFIC JOB SITE CONDITIONS SHALL BE FIELD VERIFIED. THE ELECTRICAL CONTRACTOR ASSUMES ALL RESPONSIBILITY FOR SAID FIELD CONDITIONS AND ASSOCIATED REVISIONS REQUIRED BY THE RESPECTIVE COMPANIES INVOLVED.
- D. THE CONTRACTOR SHALL CONTACT THE UTILITY COMPANY, TELEPHONE COMPANY, AND CABLE TV COMPANY, VERIFY ALL REQUIREMENTS AND EQUIPMENT. THE CONTRACTOR SHALL ALSO FURNISH AND INSTALL ALL WIRING, BOXES, CONDUIT, CONCRETE PADS, TRENCHING AND BACKFILL, ETC. AS NECESSARY FOR PROPER INSTALLATION.
- E. THE CONTRACTOR SHALL FIELD VERIFY, IN THE PRESENCE OF THE RESPECTIVE UTILITY COMPANY REPRESENTATIVES, THE LOCATION OF ALL EXISTING UTILITY SERVICES AND EQUIPMENT, AND THE PROPOSED LOCATIONS FOR ALL NEW UTILITY SERVICES AND EQUIPMENT. NO ALLOWANCES WILL BE MADE FOR THE CONTRACTOR'S UNFAMILIARITY WITH THE EXISTING CONDITIONS, REQUIREMENTS OF THE NEW LOCATIONS, AND/OR FAILURE TO COORDINATE INSTALLATION.
- F. THE CONTRACTOR SHALL CONTACT THE LOCAL ELECTRICAL CODE ENFORCEMENT AUTHORITY AND THE LOCAL FIRE DEPARTMENT, VERIFY ALL REQUIREMENTS AND EQUIPMENT AND FURNISH AND INSTALL ALL ELECTRICAL ITEMS NECESSARY FOR PROPER INSTALLATION IN STRICT ACCORDANCE WITH THE GUIDELINES AND INTERPRETATIONS SET FORTH BY THESE GOVERNING LOCAL AUTHORITIES BEYOND THOSE SET FORTH IN THE NEC AND NFPA. NO ALLOWANCES WILL BE MADE FOR THE CONTRACTOR'S FAILURE TO COORDINATE ALL SUCH REQUIREMENTS WITH SAID LOCAL AUTHORITIES.
- G. CONTRACTOR TO LIMIT ALL BRANCH CIRCUITRY TO 3% VOLTAGE DROP.
- H. CONTRACTOR TO LIMIT ALL FEEDERS TO 2% VOLTAGE DROP.

**KEYED NOTES:**

- 1 LANDLORD PROVIDED AND INSTALLED PARKING LOT LIGHTING. SHOWN FOR REFERENCE ONLY. COORDINATE 3" CONCRETE BASE FOR TYPE "A" FIXTURES WITH ENGINEER DRAWINGS.
- 2 CONTRACTOR SHALL PROVIDE 1" EMPTY CONDUIT WITH PULLSTRING TO WEATHERPROOF JUNCTION BOX FROM STARBUCKS PANEL LOCATION FOR FUTURE Pylon SIGN.
- 3 LANDLORD PROVIDED TWO (2) SPARE 1" CONDUITS BELOW GRADE THROUGH FOUNDATION WALL OF BUILDING TO PATIO STRUCTURAL SUPPORT, CAPPED AND TERMINATED ABOVE PATIO FOR FUTURE USE. VERIFY LOCATIONS FOR STUB UP WITH STARBUCKS REPRESENTATIVE PRIOR TO COMMENCING WORK.
- 4 PROVIDE A PHOTOCELL ON THE NORTH SIDE OF THE ROOF AND ASTRONOMICAL, 7 DAY TIMECLOCK FOR SITE LIGHTS & WALL MTD. EXTERIOR LIGHT. LOCATE TIMECLOCK NEXT TO PANELBOARD. LABEL TIMECLOCK "SITE LIGHTING".
- 5 U.G. ELECTRICAL. COORDINATE EXACT LOCATION AND ALL REQUIREMENTS WITH UTILITY COMPANY.
- 6 U.G. TELEPHONE. LANDLORD TO PROVIDE TWO (2) 2" CONDUITS FROM UTILITY DEMARCATION POINT TO WITHIN TENANT'S SPACE. COORDINATE TERMINATION POINT WITH STARBUCKS MANAGER'S DESK LOCATION PRIOR TO COMMENCING WORK.
- 7 LANDLORD TO PROVIDE THREE (1) 1" CONDUIT BELOW GRADE WITH PULLSTRING FROM DRIVE-THRU EQUIPMENT (MENU BOARD) TO ELECTRICAL PANELS AND TENANT E.C. TO PROVIDE WIRING AND MAKE FINAL CONNECTION AS REQUIRED. VERIFY ALL REQUIREMENTS WITH EQUIPMENT MANUFACTURER PRIOR TO COMMENCING WORK. SEE ARCHITECTURAL FOR MORE INFORMATION. COORDINATE ROUTING OF CONDUIT IN FIELD. COORDINATE WITH OWNER AND STARBUCKS REPRESENTATIVE PRIOR TO COMMENCING WORK.
- 8 LANDLORD TO PROVIDE ONE (1) 1" CONDUIT WITH PULLSTRING FROM ELECTRICAL PANELS TO PRE-ORDER BOARD.
- 9 DRIVE THRU DIRECTIONAL SIGNAGE: LANDLORD TO PROVIDE ONE (1) 1" CONDUIT WITH PULLSTRING AND TENANT E.C. TO PROVIDE WIRING AND MAKE FINAL CONNECTION AS REQUIRED. SEE ARCHITECTURAL PLANS FOR DETAILS. COORDINATE ROUTING OF LANDLORD PROVIDED CONDUIT IN FIELD.
- 10 LANDLORD TO PROVIDE ONE (1) 1-1/2" CONDUIT WITH PULLSTRING FOR EACH OF TWO DETECTOR LOOP SETS (ONE AT THE SPEAKER POST AND THE OTHER AT THE DRIVE THRU WINDOW) AND TENANT E.C. TO PROVIDE WIRING AND MAKE FINAL CONNECTIONS.
- 11 LANDLORD TO PROVIDE THREE (3) 1" SPARE CONDUIT TO BE RAN THROUGH THE FOUNDATION WALL OUT THE REAR OF THE BUILDING, CAPPED AND TERMINATED ABOVE INTERIOR CEILING FOR FUTURE USE. VERIFY LOCATION OF STUB UP IN FIELD WITH STARBUCKS REPRESENTATIVE PRIOR TO COMMENCING WORK.
- 12 LANDLORD TO PROVIDE THREE (2) 1" CONDUITS BELOW GRADE WITH PULLSTRING FROM DRIVE-THRU EQUIPMENT (OCS/SPEAKER BOARD) TO ELECTRICAL PANELS AND TENANT E.C. TO PROVIDE WIRING AND MAKE FINAL CONNECTION AS REQUIRED. VERIFY ALL REQUIREMENTS WITH EQUIPMENT MANUFACTURER PRIOR TO COMMENCING WORK. SEE ARCHITECTURAL FOR MORE INFORMATION. COORDINATE ROUTING OF CONDUIT IN FIELD. COORDINATE WITH OWNER AND STARBUCKS REPRESENTATIVE PRIOR TO COMMENCING WORK.



**1 SITE PLAN - ELECTRICAL**  
 SCALE: 1" = 20'-0"



**2 TYPICAL POLE BASE DETAIL**  
 SCALE: NONE

Order Plans @ [www.tdlin.com](http://www.tdlin.com)

Gregory C. Speer  
 5020 Tennyson Pkwy. - Plano, TX 75024  
 Phone (214) 432-3030 / Fax (214) 618-8191  
 CONTRACTOR SHALL COORDINATE  
 MEP DRAWINGS WITH ALL OTHER  
 DISCIPLINES

AOS JOB #: 2568-009-19