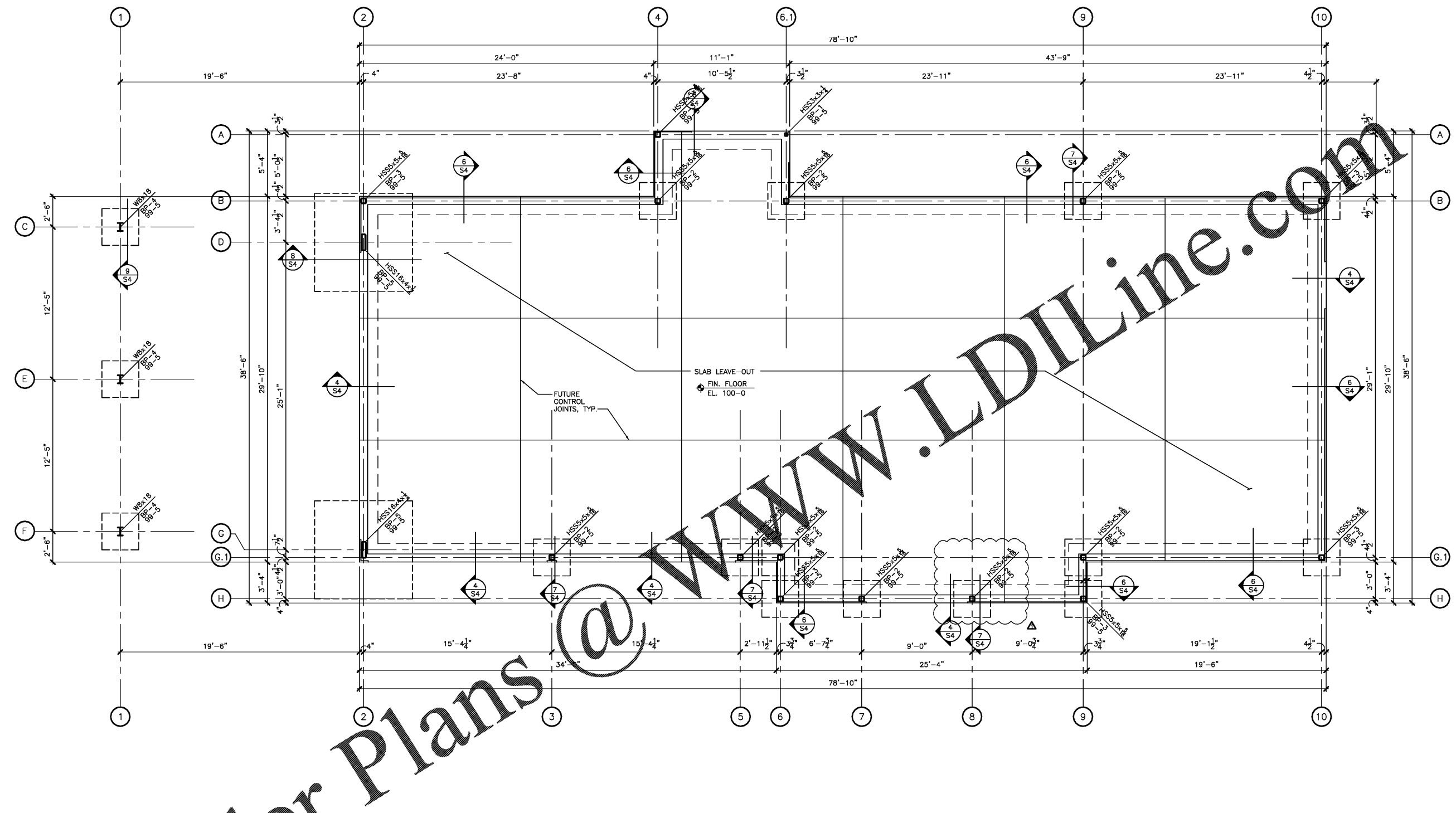


NO.	DATE	REVISION
1	11/11/19	TENANT REVISION
2	03/20/20	TENANT REVISION
3	07/22/20	STRUCTURAL REVISION

File Name:	S_Sheets
Project No.:	19-297
Date:	11/11/19
Drawn By:	GTS
Checked By:	TTS



Order Plans @ www.LDILine.com

**1 FOUNDATION PLAN**  
 SCALE: 1/4"=1'-0"  
 NORTH

**TYPICAL FOUNDATION PLAN NOTES**

- FOUNDATION DESIGN IS BASED ON AN ASSUMED NET ALLOWABLE BUILDING CAPACITY OF 2000 PSF.
- REFER TO SHEET S1 FOR GENERAL NOTES AND TYPICAL DETAILS NOT NOTED ON PLAN.
- FIN. FL. = DATUM EL. 100'-0", ACTUAL EL. =
- CONCRETE SHALL HAVE A MINIMUM COMPRESSIVE STRENGTH OF 3000 PSI AT 28 DAYS.
- REINFORCING STEEL SHALL BE ASTM A615 GRADE 60.
- FLOOR SLAB SHALL BE 5" THICK SLAB-ON-GRADE, REINFORCED WITH #4@18" O.C.E.W. CENTERED IN SLAB.
- PROVIDE 2#4 X 3'-0" ADDITIONAL SLAB REINFORCING, CENTERED IN SLAB AT ALL INTERIOR CORNERS WHERE A CONSTRUCTION OR SAWN JOINT DOES NOT OCCUR.
- REFER TO ARCHITECTURAL DRAWINGS FOR LOCATION AND EXTENT OF ALL LEDGES, POCKETS OR DEPRESSIONS.
- REFER TO ARCHITECTURAL DRAWINGS AND SPECS FOR FINISH AND JOINT PATTERNS ON CONCRETE WALKS AND SLABS.
- COLUMNS ARE NOTED ON PLAN THUS:  
 HSS5x5x1/8 COLUMN SIZE  
 BP-1 BASE PLATE MARK  
 99-5 BASE PLATE ELEVATION