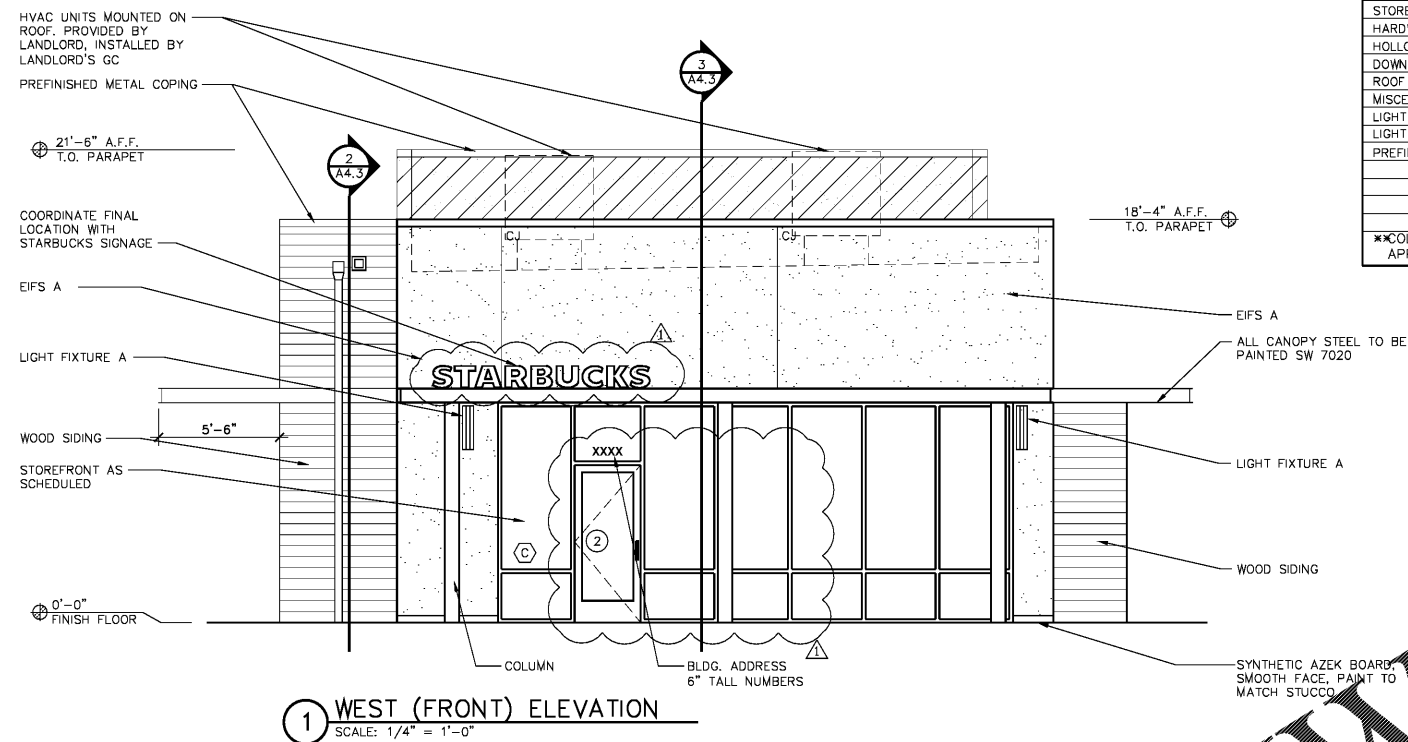


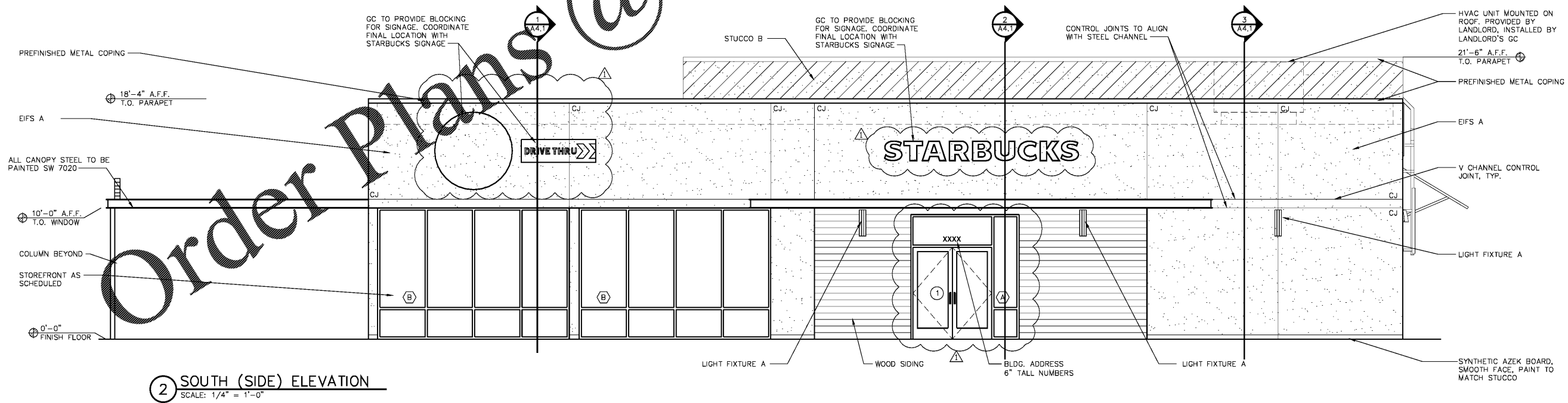
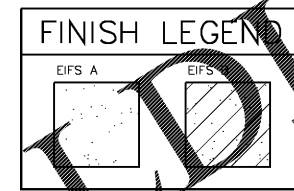
EXTERIOR FINISH SCHEDULE

ITEM	COLOR	MANUFACTURER	REMARKS
EIFS A	"REPOSE GRAY" SW 7015	SHERWIN WILLIAMS	-
EIFS B	"ADAPTIVE SHADE" SW 7053	SHERWIN WILLIAMS	-
WOOD SIDING	CLEAR WOOD STAIN, SEMI TRANSPARENT COLOR #5077	LOCALLY SOURCED	6" TONGUE & GROOVE WESTERN RED CEDAR PLANKS, FLUSH JOINT. BEHR PREMIUM SEMI-TRANSPARENT ALL-IN-ONE WOOD STAIN
METAL GATES AT TRASH ENCLOSURE	"BLACK FOX" SW 7020	SHERWIN WILLIAMS	-
CMU AT TRASH ENCLOSURE	"BLACK FOX" SW 7020	SHERWIN WILLIAMS	-
METAL CANOPY	"BLACK FOX" SW 7020	SHERWIN WILLIAMS	COLOR TO BE REVIEWED AND APPROVED BY STARBUCKS DESIGNER.
STOREFRONT FRAMES	DARK BRONZE ANODIZED FRAME AND DOORS	KAWNEER	REFER TO WINDOW AND DOOR SCHEDULE, TRIFAB 451T.
HARDWARE	SATIN CLEAR FINISH	FACTORY FINISHED	REFER TO HARDWARE LEGEND
HOLLOW METAL DOOR AND FRAME	"BLACK FOX" SW 7020	SHERWIN WILLIAMS	-
DOWNSPOUTS	TO MATCH "BLACK FOX" SW 7020	AEP SPAN	FACTORY APPLIED DURATECH FINISH
ROOF LADDER	"BLACK FOX" SW 7020	SHERWIN WILLIAMS	-
MISCELLANEOUS METALS	"BLACK FOX" SW 7020	SHERWIN WILLIAMS	-
LIGHT FIXTURE A	BLACK	LBL LIGHTING	LED (REFER TO ELECT.)
LIGHT FIXTURE B	DARK BRONZE	LITHONIA	LED (REFER TO ELECT.)
PREFINISHED METAL COPING	"BLACK FOX" SW 7020	SHERWIN WILLIAMS	-

***COLORS AND MANUFACTURERS INDICATED ARE PREFERRED. G.C. SHALL SUBMIT SAMPLES OF PROPOSED ALTERNATES FOR ARCHITECT'S APPROVAL IN ACCORDANCE WITH DIRECTIONS IN SPECIFICATIONS



1 WEST (FRONT) ELEVATION
 SCALE: 1/4" = 1'-0"



2 SOUTH (SIDE) ELEVATION
 SCALE: 1/4" = 1'-0"

Order Plans @ www.IDOLine.com