

John Frantz Architect
 ARCHITECTURE, INTERIOR ARCHITECTURE, PLANNING (017)2736678
 405 INTERNATIONAL PLAZA, SUITE 100, FORT WORTH, TEXAS 76109

SHELL BUILDING
 920 STRICKLAND BRIDGE
 FAYETTEVILLE, NORTH CAROLINA 28304

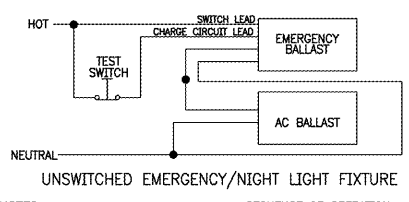
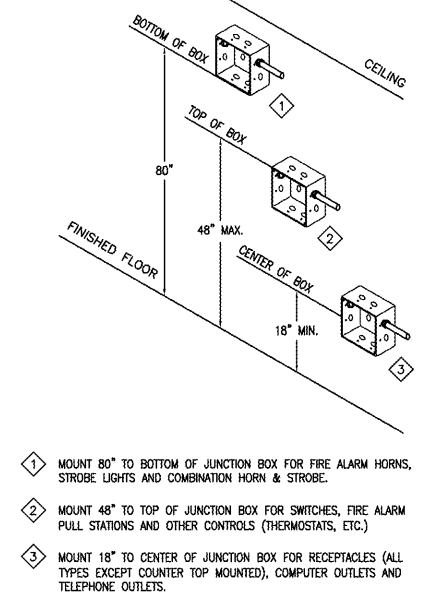
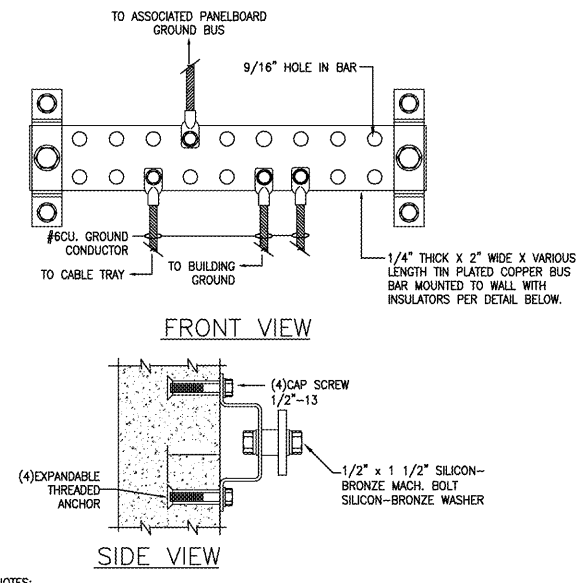
Revisions:
 City Comments 10/21/19
 Utility Coordination 01/20/20

File Name: 19033
 Project No: 19033
 Date: 04/16/19
 Drawn By:
 Checked By:

SHEET
E301
 ELECTRICAL
 DETAILS

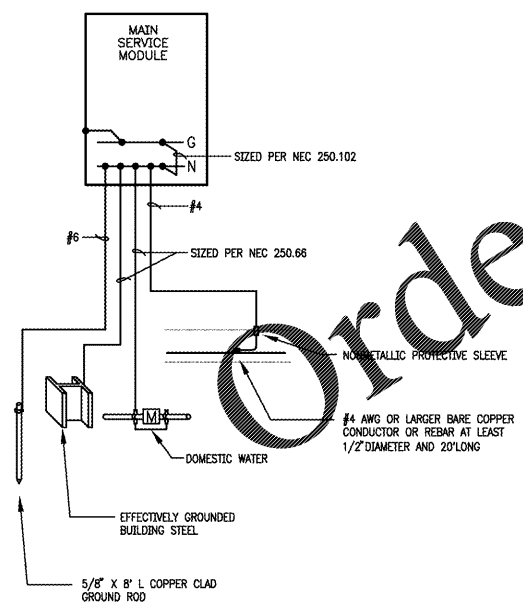
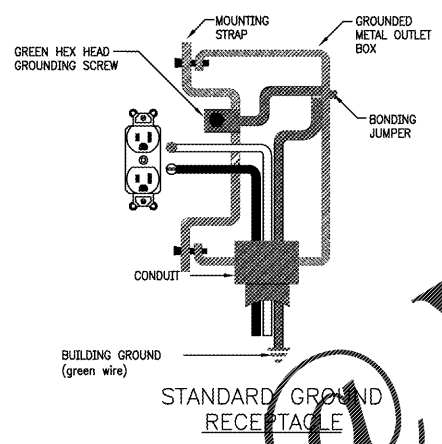
TYPE	DESCRIPTION	VOLTAGE	LAMP		MOUNTING	MANUFACTURER / MODEL #
			QTY.	TYPE		
A	SITE POLE MTD. FIXTURE & 24 FT. SQUARE STRAIGHT STEEL POLE	120/277 UNW	-	LED	POLE	GE GE/ENL50304MH740ND10K8Z
B	WINDFALL OUTDOOR WALL SCONCE	120V	1	LED	WALL	LBL LIGHTING 00785-FINISH-LED-W
X1	EXIT/EMERGENCY COMBO UNIT, THERMOPLASTIC HOUSING, RED LETTERS	120/277V UNW	-	LED	VARIOUS	LITHONIA H.E. WILLIAMS
X2	SURFACE MOUNT LED OUTDOOR EGRESS WITH REMOTE POWER SUPPLY	120/277V UNW	-	LED	WALL	LITHONIA H.E. WILLIAMS

NOTES:
 A. ARCHITECT TO SELECT AND VERIFY ALL FINISHES AND FIXTURES PRIOR TO PURCHASE.
 B. PROVIDE LUMINAIRE DISCONNECT FOR ALL FLUORESCENT LIGHT FIXTURES CONTAINING DOUBLE ENDED LAMPS IN ACCORDANCE WITH NEC ARTICLE 250.119.



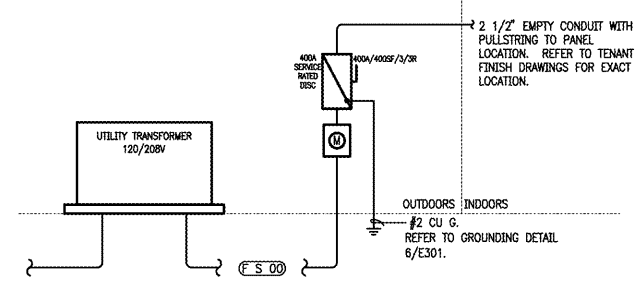
GENERAL NOTES:
 A. LAMP LEADS NOT SHOWN, CONTRACTOR TO REFER TO BALLAST MANUFACTURER'S WIRING DIAGRAMS PRIOR TO ELECTRICAL INSTALLATION.
 B. CONTRACTOR TO TEST ALL EMERGENCY FIXTURES TO INSURE PROPER OPERATION.
 C. EMERGENCY BALLAST AND AC BALLAST MUST BE FED FROM SAME BRANCH CIRCUIT TO INSURE PROPER OPERATION.

SEQUENCE OF OPERATION:
 DURING NORMAL AC OPERATION:
 FIXTURE OPERATES AS CONTINUOUSLY ON AC POWER. ALL LAMPS ARE ILLUMINATED AT ALL TIME. THE EMERGENCY BALLAST IS IN STANDBY/CHARGING MODE.
 DURING AC POWER FAILURE:
 EMERGENCY BALLAST IMMEDIATELY SWITCHES TO EMERGENCY MODE, KEEPING TWO OR THREE LAMPS ILLUMINATED FOR A MINIMUM OF 90 MINUTES. WHEN AC POWER IS RESTORED, THE EMERGENCY BALLAST AUTOMATICALLY RETURNS TO STANDBY/CHARGING MODE.



FEEDER & SERVICE SCHEDULE													
Designation	Equipment served	Conductor Ampacity (amps)	Copper or Aluminum	Number of Runs	Phase Conductor	Neutral Conductor	Equipment Ground	Conduit Diameter (in)	Fault Current Calculation				
									I-Value	M Value	XFMR I-Value	XFMR M Value	Calculated Fault Value (+)
S 00	DISC	400	CU	2 sets	3 # 3/0	1 # 3/0	-	2 1/2	0.335	0.748	-	-	8.367

KEY: "CU" - COPPER "AL" - ALUMINUM
 NOTES: COPPER OR ALUMINUM REFERS TO ALL CONDUCTORS (PHASE, NEUTRAL, AND GROUND)
 (+) INDICATES AVAILABLE FAULT CURRENT AT EQUIPMENT BASED ON ASSUMED 480V/4000' UTILITY TRANSFORMER AT 0.1% IMPEDANCE. ALL DISTANCES USED IN CALCULATIONS ARE ASSUMED.



FIRE ALARM NOTE
 THE FIRE ALARM CONTRACTOR IS RESPONSIBLE FOR DESIGN, DESIGN APPROVAL, INSTALLATION AND FINAL ACCEPTANCE BY THE AUTHORITIES HAVING JURISDICTION. FINAL DEVICE QUANTITIES AND LOCATIONS ARE THE RESPONSIBILITY OF THE CONTRACTOR.

CONTRACTOR SHALL COORDINATE MEP DRAWINGS WITH ALL OTHER DISCIPLINES

Gregory C. Speer
 5020 Tennyson Pkwy., - Plano, TX 75024
 Phone (214) 432-3030 / Fax (214) 618-8191

AOS JOB #: 25668-002-19