

John Franz Architect
ARCHITECTURE, INTERIOR ARCHITECTURE, PLANNING (817) 272-6678
405 INTERNATIONAL PLAZA, SUITE 100 FORT WORTH, TEXAS 76109

SHELL BUILDING
920 STRICKLAND BRIDGE
FAYETTEVILLE, NORTH CAROLINA 28304

Revisions:
City Comments 10/21/19
Utility Coordination 01/20/20

File Name: 19033
Project No: 19033
Date: 04/16/19
Drawn By:
Checked By:

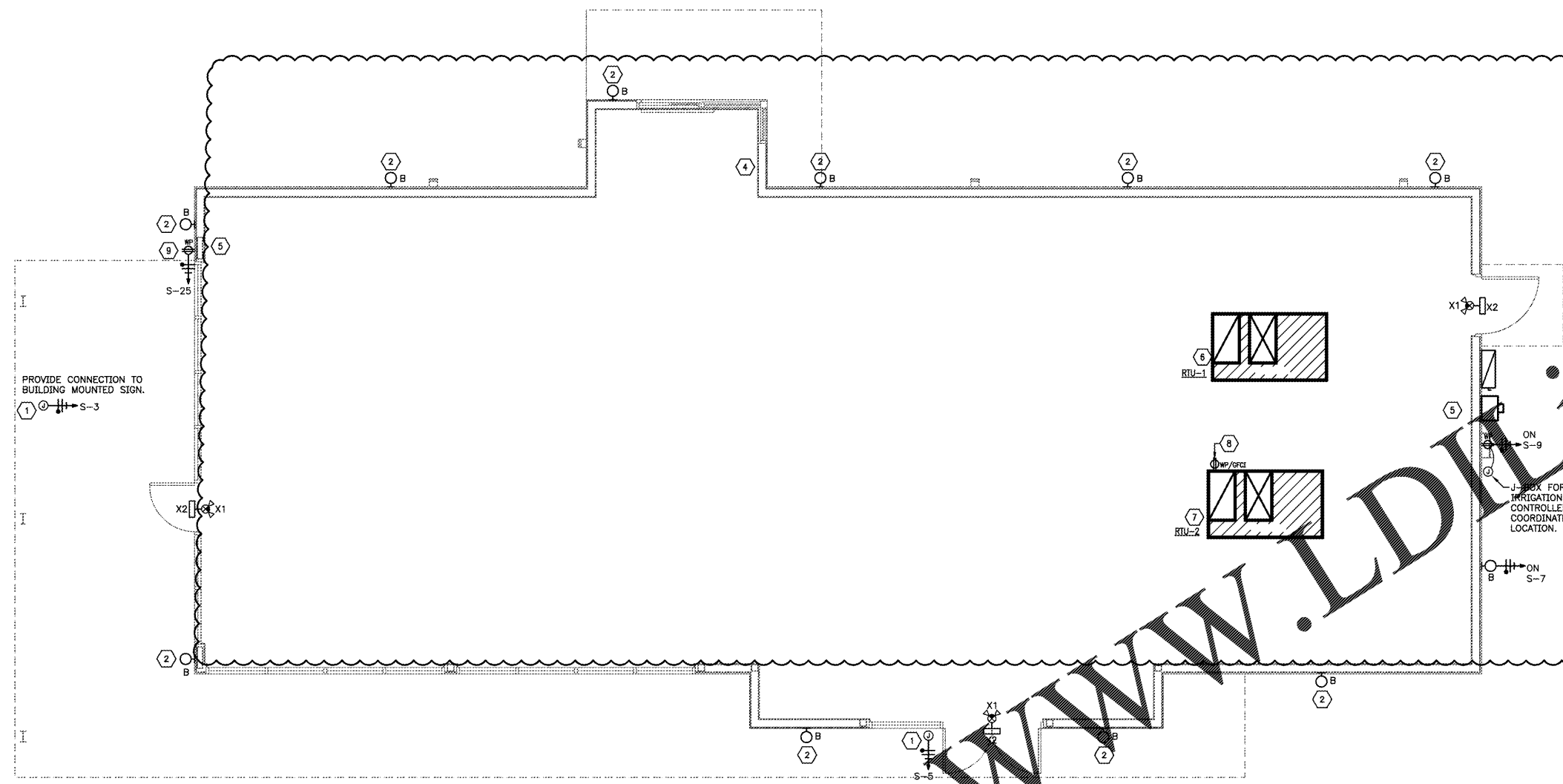
SHEET
E201
ELECTRICAL
FLOOR PLAN

GENERAL NOTES:

- A. ALL CIRCUIT NUMBERS SHOWN FOR LOCATION AND QUANTITY ONLY. VERIFY EXACT NUMBERS IN FIELD. CONTRACTOR SHALL INSTALL EQUIPMENT SHOWN IN RISER DIAGRAM ON SHEET E301 TO PROVIDE REQUIRED CIRCUITS. PRICE THE INSTALLATION OF NEW EQUIPMENT WHEN SUBMITTING BID. COORDINATE EXACT LOCATION OF NEW EQUIPMENT WITH BUILDING ENGINEER PRIOR TO INSTALLATION. CONTRACTOR TO VERIFY LOAD DOES NOT EXCEED PANEL CAPACITY. CONTACT AOS-ENGINEERING IF DISCREPANCY OCCURS. UPDATE PANEL SCHEDULES WHEN WORK IS COMPLETED.
- B. REFER TO ARCHITECTURAL DRAWINGS FOR ADDITIONAL SYMBOL LEGENDS, DEMOLITION, CONSTRUCTION NOTES AND POWER SPECIFICATIONS.
- C. TURN OFF ALL "SPARE" CIRCUIT BREAKERS AND LABEL.
- D. ALL 120-VOLT BRANCH CIRCUITS SHALL BE 3-WIRE (HOT, NEUTRAL AND GROUND). WHERE HOMERUN IS SHOWN TO SERVE A SINGLE DEVICE, THE BRANCH CIRCUIT SHALL HAVE DEDICATED GROUND AND NEUTRAL CONDUCTORS.
- E. PROVIDE DEEP DOUBLE GANG JUNCTION BOX WITH SINGLE GANG MASTER RING WITH (1) 3/4" C. FROM EACH TELEPHONE, DATA OR COMMUNICATION OUTLET INDICATED, TO NEAR ACCESSIBLE CEILING AND CAP. CONDUIT SHALL INCLUDE 1/4" POLYPROPYLENE FILL AND INSTALLED IN EMPTY CONDUIT.
- F. CONTRACTOR TO PROVIDE CODE MINIMUM FIRE ALARM SYSTEM. INSTALLATION SHALL MEET ALL APPLICABLE LOCAL, STATE, AND NATIONAL CODES. VERIFY ALL FIRE ALARM DEVICE LOCATIONS WITH ARCHITECT PRIOR TO INSTALLING BOXES.
- G. VERIFY EXACT LOCATION OF ALL MECHANICAL AND PLUMBING EQUIPMENT WITH MECHANICAL AND PLUMBING CONTRACTOR PRIOR TO INSTALLATION.
- H. CONNECT UN-SWITCHED EMERGENCY FIXTURES AHEAD OF ANY SWITCHES AND/OR RELAYS. REFER TO DETAIL 6 ON SHEET E301 FOR UN-SWITCHED EMERGENCY FIXTURE DETAIL.
- I. REFER TO ARCHITECTURAL DRAWINGS FOR ADDITIONAL SYMBOL LEGENDS, DEMOLITION, CONSTRUCTION NOTES AND LIGHTING SPECIFICATIONS.

KEY NOTES:

- 1. COORDINATE EXACT LOCATION OF DEVICE OR EQUIPMENT WITH STARBUCKS PRIOR TO ROUGH-IN OR INSTALLATION.
- 2. LIGHT FIXTURE (LBL# 00785-FINISH-LED-W) TO BE PROVIDED & INSTALLED BY LANDLORD. PROVIDE CONDUIT STUB-OUT AND J-BOX IN WALL AS REQUIRED FOR CIRCUITING BY TENANT. COORDINATE EXACT LOCATION AND REQUIREMENTS WITH STARBUCKS.
- 3. NOTE NOT USED.
- 4. (1) 3/4" EMPTY CONDUIT EXTENDED TO TENANT PANELBOARD LOCATION FOR CONNECTION TO FLY FAN.
- 5. (3) 1" EMPTY CONDUITS THROUGH FOUNDATION WALL. VERIFY LOCATIONS WITH TENANT REPRESENTATIVE.
- 6. RTU-1. PROVIDE 3/4" C. WITH PULLSTRING FROM RTU LOCATION TO LOCATION OF TENANT PANELBOARD.
- 7. RTU-2. PROVIDE 3/4" C. WITH PULLSTRING FROM RTU LOCATION TO LOCATION OF TENANT PANELBOARD.
- 8. CONTRACTOR TO PROVIDE AND INSTALL WP/GFCI SERVICE RECEPTACLE LOCATED WITHIN 25'-0" OF ALL NEW ROOF MOUNTED EQUIPMENT. FINAL CONNECTION SHALL BE BY TENANT E.C.
- 9. PROVIDE AND INSTALL A NEW RECEPTACLE TO PROVIDE POWER FOR EXTERIOR CANOPY TWINKLE LIGHTS. COORDINATE WITH ARCHITECT FOR EXACT LOCATION AND REQUIREMENTS PRIOR TO INSTALLATION.



1 FLOOR PLAN - LIGHTING
SCALE 1/4" = 1'-0"

Order Plans @

FIRE ALARM NOTE
THE FIRE ALARM CONTRACTOR IS RESPONSIBLE FOR DESIGN, DESIGN APPROVAL, INSTALLATION AND FINAL ACCEPTANCE BY THE AUTHORITIES HAVING JURISDICTION. FINAL DEVICE QUANTITIES AND LOCATIONS ARE THE RESPONSIBILITY OF THE CONTRACTOR.

CONTRACTOR SHALL COORDINATE MEP DRAWINGS WITH ALL OTHER DISCIPLINES

Gregory C. Speer
5020 Tennyson Pkwy. - Plano, TX 75024
Phone (214) 432-3030 / Fax (214) 618-8191

AOS JOB #: 25668-002-19