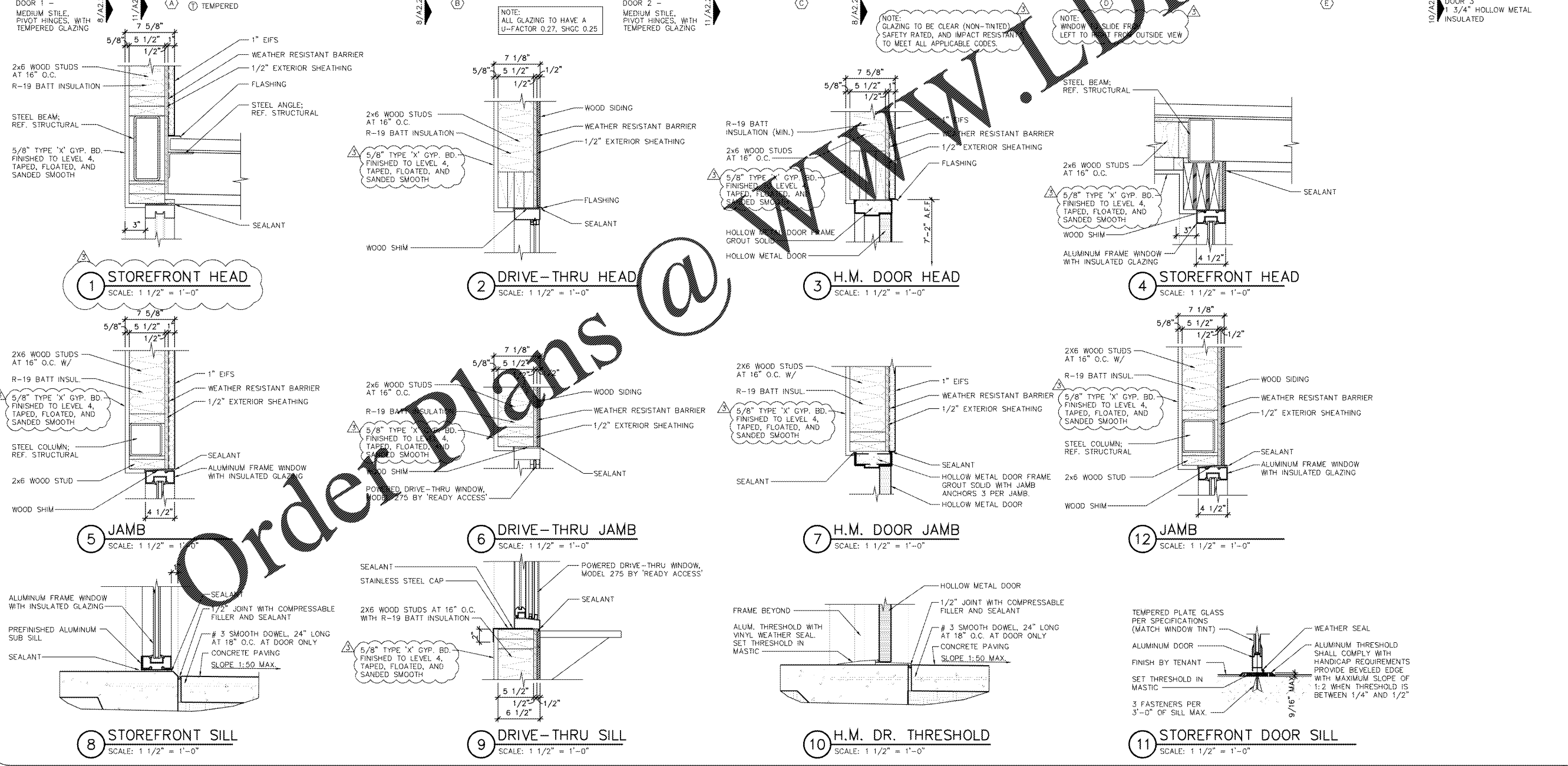
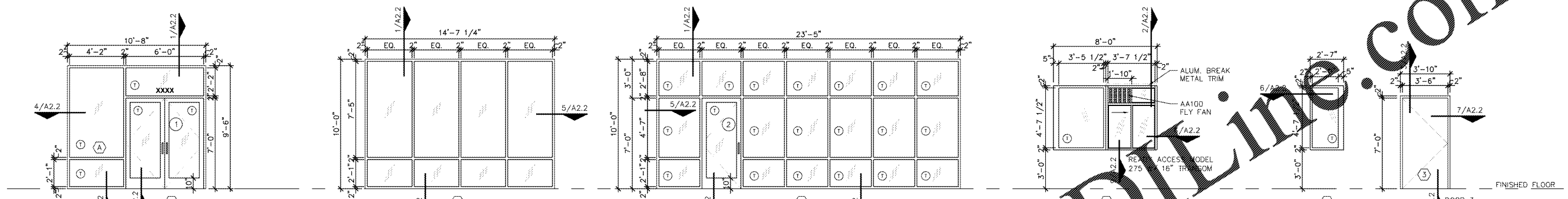


DOOR SCHEDULE									
MARK	SIZE (NOM.)	MAT'L	FRAME		FIRE RATING	HW SET	REMARKS		
			TYPE	MAT'L				FURN. BY	INST. BY
1	3'-0" x 7'-0" (PAIR)	ALUM		ALUM		H-1		GC	GC
2	3'-0" x 7'-0"	ALUM		ALUM		H-1		GC	GC
3	3'-6" x 7'-0"	HM		HM		H-2		GC	GC

DOOR HARDWARE LEGEND									
G.C. SHALL INSURE THAT ALL HARDWARE CONFORMS APPLICABLE ACCESSIBILITY STANDARDS									
H-1 [FRONT, SIDE ENTRY/EXIT DOORS]					H-2 [BACK EXIT DOOR]				
(3) DOOR HINGES: MCKINNEY TH2314/MPB91, 630 FINISH					NOTE: NO EXTERIOR EXPOSED HARDWARE IS ALLOWED				
(1) PANIC DEVICE: VON DUPRIN CD35A-NL-OP, 630 FINISH					(3) DOOR HINGES: MCKINNEY TH2314/MPB91, 630 FINISH				
(2) CORE: FALCON C607 7-PIN CORE COMB "A" KEYWAY, 626 FINISH					(1) CORE: FALCON C607 7-PIN CORE COMB "A" KEYWAY 626 FINISH				
(1) SECURING DEVICES: FALCON KB609-2 CUT CONTROL "A" KEYWAY					(1) DOOR LOCK: SUR-LOCK I/O 2000L-03IC AUTO LOCKING DOOR ALARM, IC; NO CTR INCLUDES MORTISE CYLINDER				
(9) SECURING DEVICES: FALCON KB632-2 CUT USER KEY "A" KEYWAY					(1) DOOR CLOSER: DORMA 8916 AF89P, 689 FINISH				
(1) SECURING DEVICES: FALCON C953 7-PIN RM CYLINDER HOUSING, 626 FINISH					(1) KICK PLATE: ROCKWOOD K1050 B4E 10X40, 630 FINISH				
(1) SECURING DEVICES: FALCON C987 7-PIN MORTISE CYLINDER HOUSING W/AR CAM, 626 FINISH					(1) RAIN DRIP: NPG 16A RAIN DRIP 46", MILL FINISH				
(1) OPERATING TRIM: ROCKWOOD 108 DOOR PULL HANDLE, 630 FINISH					(1) DOOR SWEEP 42": NPG C607A, MILL FINISH				
(1) CLOSING DEVICES: DORMA 8916 DOOR CLOSER 8916 AF89P, 689 FINISH					(1) WEATHER STRIP 17": NPG 137NA17, MILL FINISH				
(1) STOPS AND HOLDERS: ROCKWOOD 473 DOOR STOP W/ HOOK, 626 FINISH					(1) DOOR BELL: NUTONE MCV309WHGL				
(1) THRESHOLD: NPG 325 HALF SADDLE THRESHOLD					(3) STOPS AND HOLDERS: ROCKWOOD 473 DOOR STOP W/ HOOK, 626				
					(1) THRESHOLD: NPG 325 HALF SADDLE THRESHOLD				

WINDOW AND DOOR TYPES



John Frantz Architect
 ARCHITECTURE, INTERIOR ARCHITECTURE, PLANNING 4817-737-8675
 805 INTERNATIONAL PLAZA, SUITE 100 FORT WORTH, TEXAS 76109

SHELL BUILDING
 920 STRICKLAND BRIDGE RD.
 FAYETTEVILLE, NORTH CAROLINA 28304

Revisions: REVISION 3 / 01-14-20 / BY MNK
 CONTRACTOR COMMENTS

File Name: 19033_A2.2
 Project No: 19033
 Date: 09/24/19
 Drawn By: MNK
 Checked By: JWF

SHEET
A2.2
 DOOR & WINDOW DETAILS

Order Plans @

WWW.LDLINE.COM