

- NOTES:
1. CONCRETE 4,000 PSI MINIMUM.
 2. REINFORCING STEEL ASIM A-615 GRADE 50.
 3. MEETS N.C.D.O.T. APPROXIMATE TO 10' DEPTH.
 4. SOLID BOXES MEET H-20 LOADING TO 15' DEPTH.
 5. PRECAST BOXES APPROVED FOR N.C.D.O.T. STANDARDS: 840.01, 840.02, 840.04, 840.05, 840.11, 840.12, 840.14, 840.15, 840.17, 840.18, 840.19, 840.20, 840.21, 840.22, 840.23, 840.24, 840.25, 840.26, 840.27, 840.28, 840.31, 840.32, AND 840.41.
 6. ANY MODIFICATION TO BOX MAY NULLIFY H-20 LOADING ABILITY.
 7. NO RAFFLE BOXES ALLOWED BY CITY RIGHT OF WAY OR EXEMPTIONS.

Fayetteville
ENGINEERING DIVISION
433 HAY ST. 28201
(919) 433-1656
http://www.fayettevillenc.gov

PRECAST CONCRETE SOLID BOX
PAGE 1 OF 2

Rev. Date: 10/2018
Not to Scale
Review Date: 01/2019

DR-20

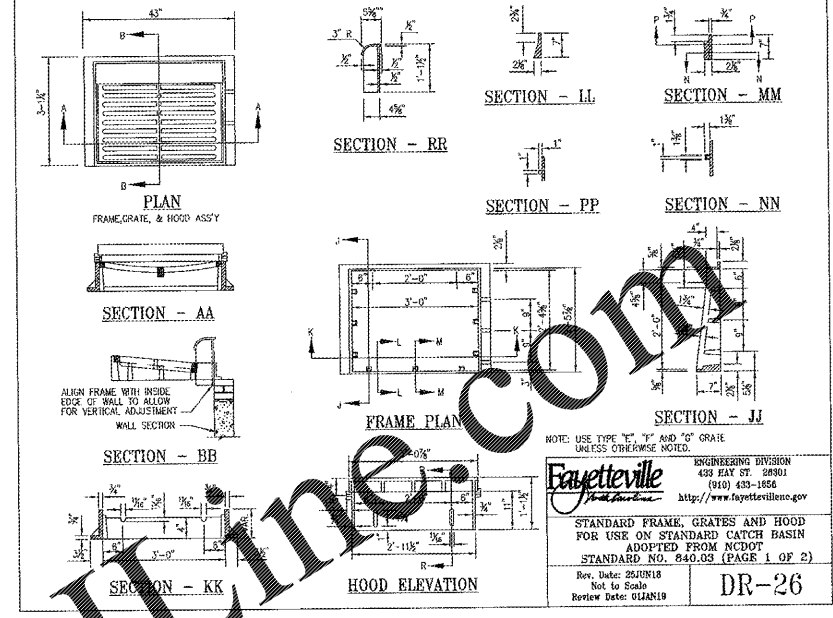
BOX SIZE	DIMENSIONS						BASE SECTION	
	A	B	C	D	E	F	H	MAX. PIPE DIA.
24"x24"	36"	36"	24"	24"	6"	6"	36"	12"
24"x44"	36"	56"	24"	44"	6"	6"	36"	18"
28"x36"	36"	48"	28"	36"	6"	6"	36"	18"
30"x48"	42"	60"	30"	48"	6"	6"	36"	24"
30"x60"	42"	72"	30"	60"	6"	6"	36"	24"
36"x36"	48"	48"	36"	36"	6"	6"	36"	24"
48"x48"	60"	60"	48"	48"	10"	10"	42"	30"
60"x60"	72"	72"	60"	60"	10"	10"	42"	36"

Fayetteville
ENGINEERING DIVISION
433 HAY ST. 28201
(919) 433-1656
http://www.fayettevillenc.gov

PRECAST CONCRETE SOLID BOX
PAGE 2 OF 2

Rev. Date: 10/2018
Not to Scale
Review Date: 01/2019

DR-20.1

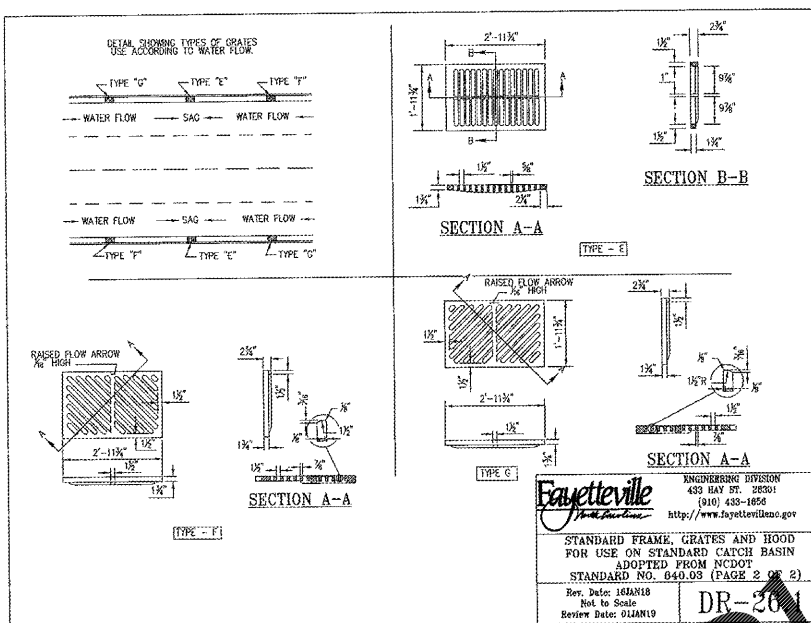


Fayetteville
ENGINEERING DIVISION
433 HAY ST. 28201
(919) 433-1656
http://www.fayettevillenc.gov

STANDARD FRAME, GRATES AND HOOD
FOR USE ON STANDARD CATCH BASIN
ADOPTED FROM NCDOT
STANDARD NO. 840.03 (PAGE 1 OF 2)

Rev. Date: 05/2018
Not to Scale
Review Date: 01/2019

DR-26

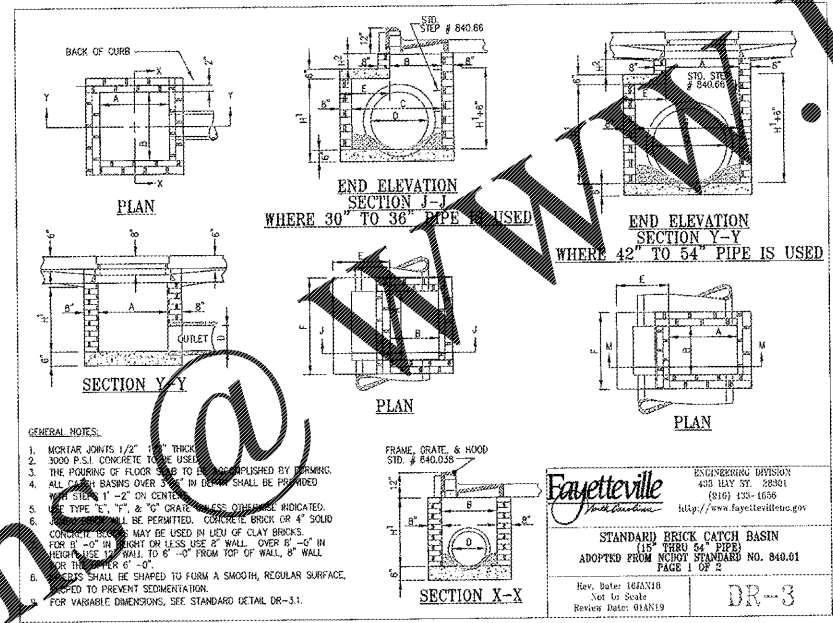


Fayetteville
ENGINEERING DIVISION
433 HAY ST. 28201
(919) 433-1656
http://www.fayettevillenc.gov

STANDARD FRAME, GRATES AND HOOD
FOR USE ON STANDARD CATCH BASIN
ADOPTED FROM NCDOT
STANDARD NO. 840.03 (PAGE 2 OF 2)

Rev. Date: 10/2018
Not to Scale
Review Date: 01/2019

DR-26.1

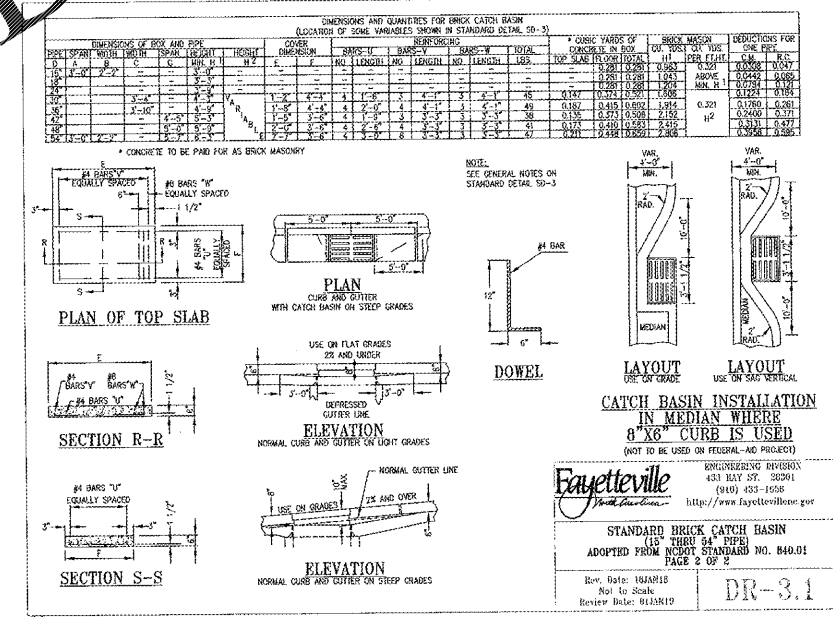


Fayetteville
ENGINEERING DIVISION
433 HAY ST. 28201
(919) 433-1656
http://www.fayettevillenc.gov

STANDARD BRICK CATCH BASIN
(15" THROUGH 54" PIPE)
ADOPTED FROM NCDOT STANDARD NO. 840.01
PAGE 1 OF 2

Rev. Date: 10/2018
Not to Scale
Review Date: 01/2019

DR-3



Fayetteville
ENGINEERING DIVISION
433 HAY ST. 28201
(919) 433-1656
http://www.fayettevillenc.gov

STANDARD BRICK CATCH BASIN
(15" THROUGH 54" PIPE)
ADOPTED FROM NCDOT STANDARD NO. 840.01
PAGE 2 OF 2

Rev. Date: 10/2018
Not to Scale
Review Date: 01/2019

DR-3.1

Order Plans @ www.ldline.com



CONSULTANT:
TRIANGLE SITE DESIGN, PLLC
4004 BARRETT DR. STE 101
RALEIGH, NC 27609
(919) 553-6570



OWNER/DEVELOPER:
Profesor 85 Fayetteville 2016, LLC
Hartzog Holdings, LLC
Attn: Collins Hartzog
109 SHH Wild Lane
Elgin, SC 29045
803-561-0719
collins@hartzogholdings.com



Starbucks
920 Strickland Bridge Road
Fayetteville, NC
Cumberland County

This document, together with the concepts and designs presented herein, is intended only for the specific purpose and client for which it was prepared. Reuse of and improper reliance on this document without written authorization and adaptation by Triangle Site Design, PLLC shall be without liability to Triangle Site Design, PLLC.

NO.	DATE	DESCRIPTION
1	10/15/18	ISSUED PER CITY OF FAYETTEVILLE REVIEW AND APPROVAL
2	10/29/18	ISSUED PER CITY OF FAYETTEVILLE REVIEW AND APPROVAL
3	11/20/18	ISSUED PER FAYETTEVILLE PNC REVIEW
4	1/17/19	ISSUED PER STARBUCKS REVIEW

Drawn
Checked
Approved

Project No. 009016
Date: November 1, 2019
18a

STORM DRAINAGE DETAILS

Sheet No. C1.5