



OWNER/DEVELOPER:  
 Starbucks Holdings, LLC  
 920 Sirkland Bridge Road  
 Fayetteville, NC  
 Cumberland County



920 Sirkland Bridge Road  
 Fayetteville, NC  
 Cumberland County

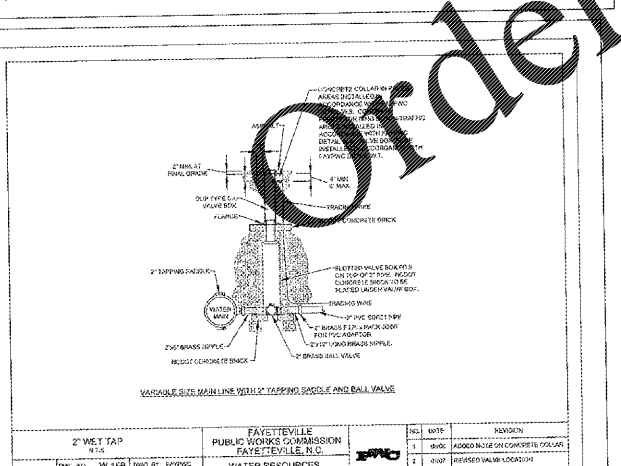
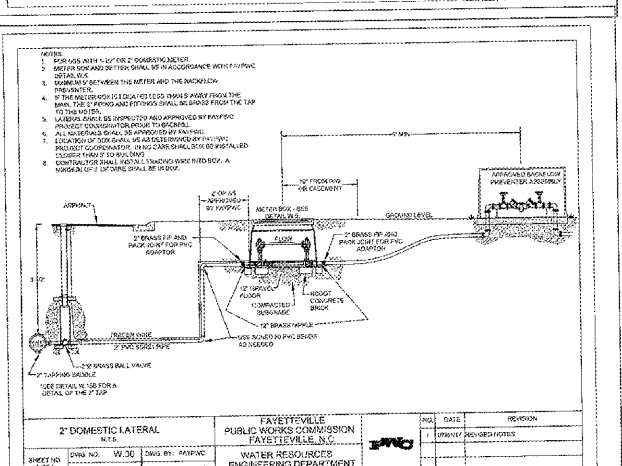
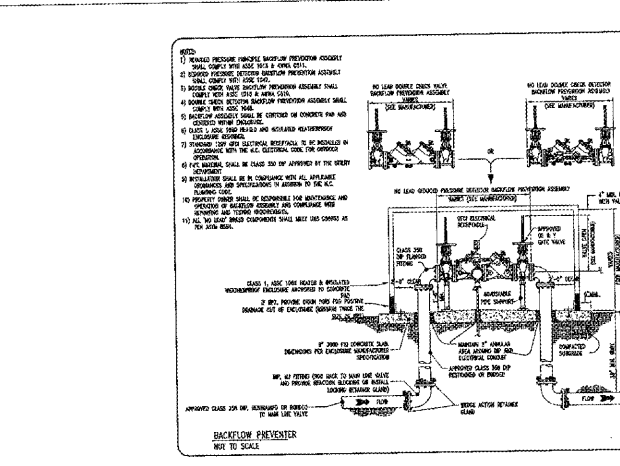
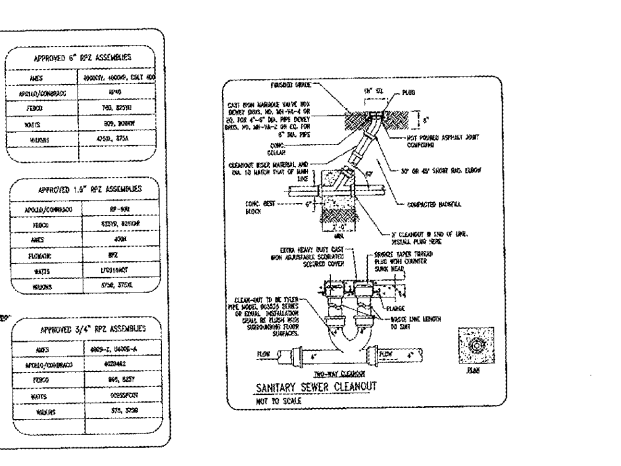
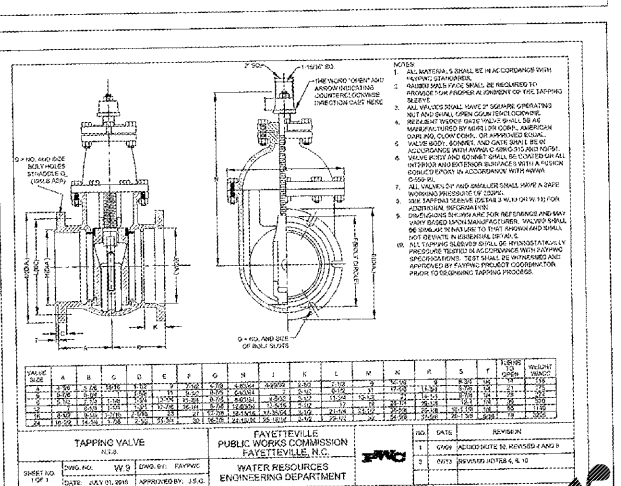
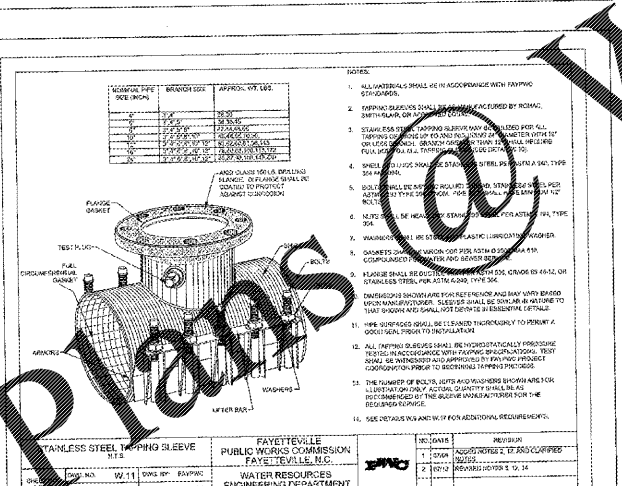
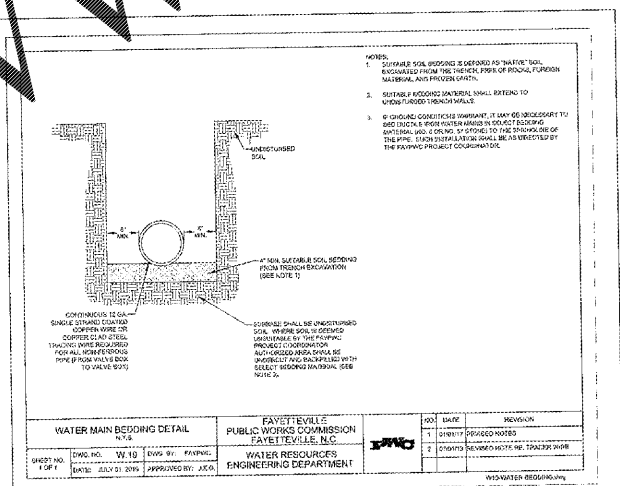
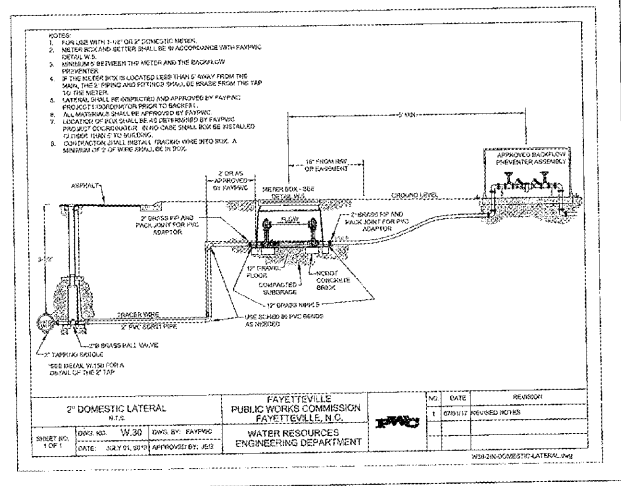
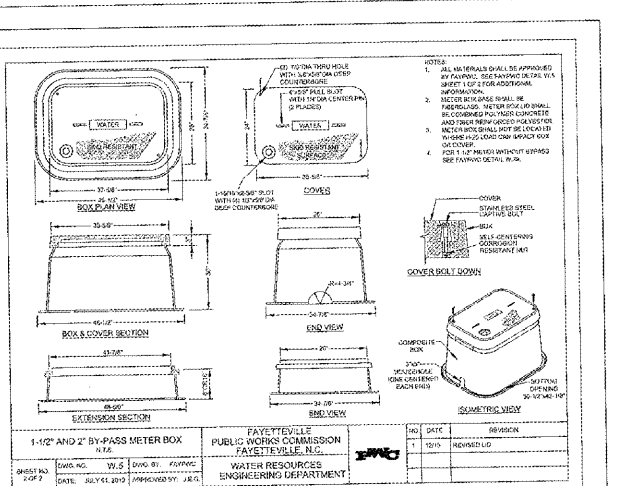
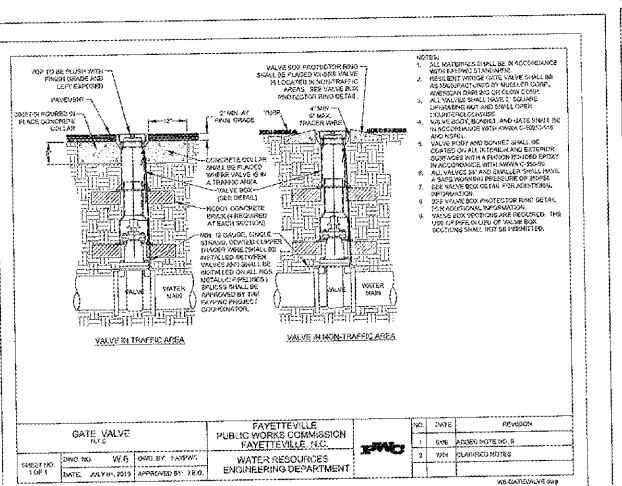
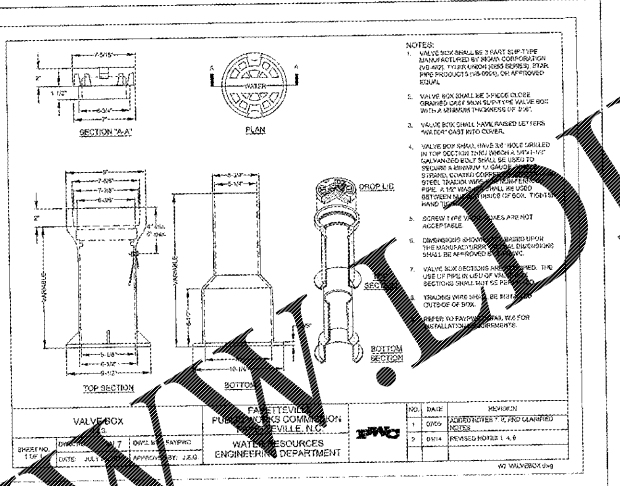
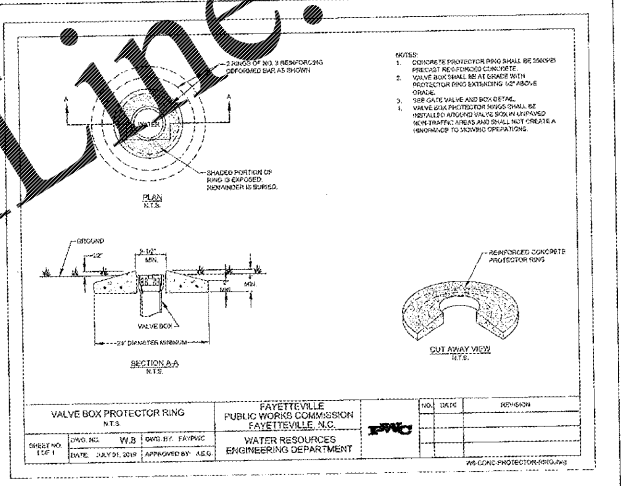
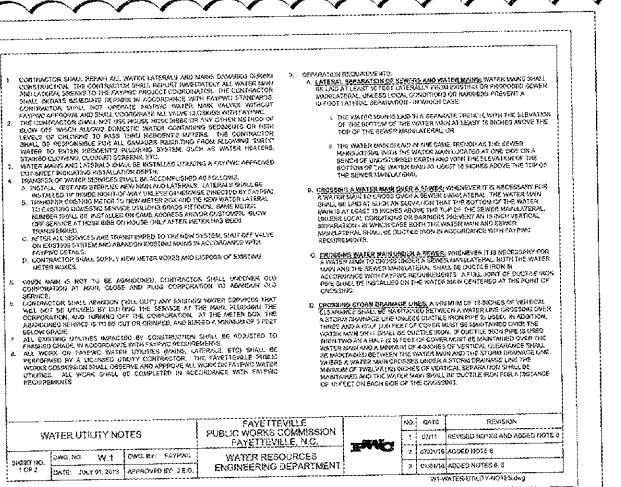
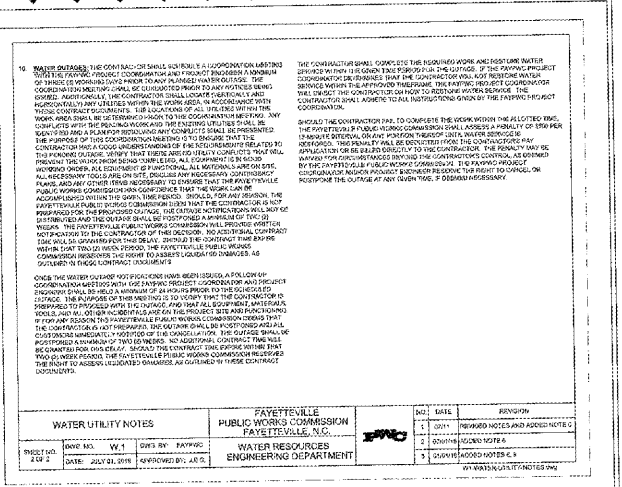
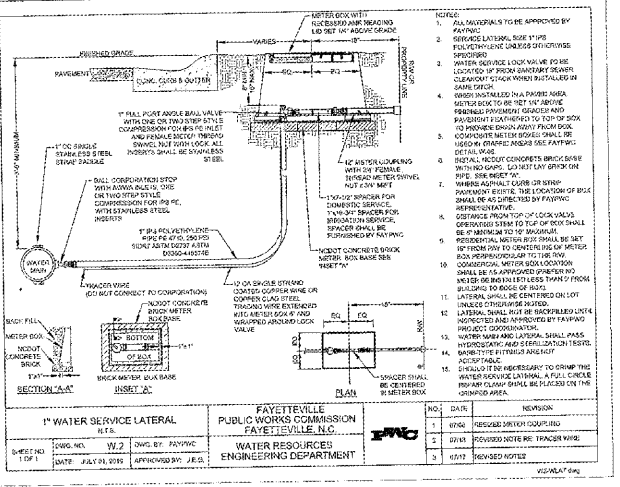
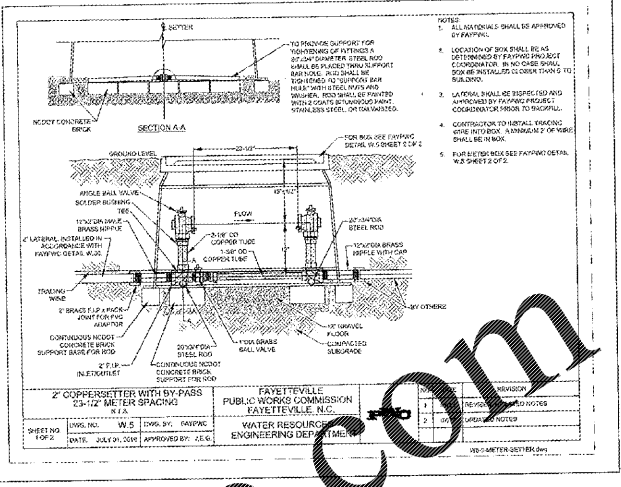
This document, together with the concepts and designs presented herein, is an instrument of service, is intended only for the specific purpose and client for which it was prepared. Results of and improper reliance on this document without written authorization and adaptation by Triangle Site Design, PLLC shall be without liability to Triangle Site Design, PLLC.

REVISIONS	Date	By	Reason
1	10/29/19	MH	REVISED PER CITY OF FAYETTEVILLE REVIEW
2	10/29/19	MH	REVISED PER CITY OF FAYETTEVILLE REVIEW AND CMC COMMERCIAL INSPECTORS COMMENTS
3	12/20/19	MH	REVISED PER FAYETTEVILLE PRC REVIEW
4	1/17/20	MH	REVISED PER STARBUCKS REVIEW

Drawn: [Blank]  
 Checked: [Blank]  
 Approved: [Blank]

Project No. 020516  
 Date: November 1, 2019  
 Title: **UTILITY DETAILS**

Sheet No. **C1.3B**



**Order Prints**