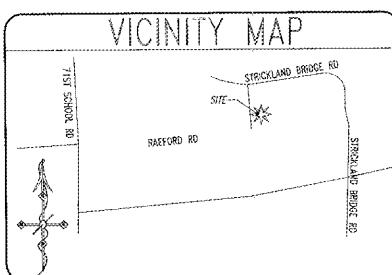


GENERAL NOTE TO LANDLORD
 WATER FLOW TEST TO BE COMPLETED BY THE LANDLORD AND TO COMPLY PER STARBUCKS WORK LETTER
 LANDLORD TO PROVIDE NECESSARY FIRE PROTECTION SYSTEM TO THE SPACE IF REQUIRED BY LOCAL JURISDICTION
 NOTE: RIS LOCATIONS ARE TO BE LOCATED PER THE TENANT DRAWINGS
 FINAL LOCATIONS OF DE EQUIPMENTS TO BE COORDINATED WITH FINAL TENANT DRAWINGS



IMPERVIOUS AREA SUMMARY
 SITE AREA = 31,017 SF (0.71 AC)

BUILDINGS	2,496 SF 0.06 ACRES	8.05 %
PAVEMENT	15,014 SF 0.33 ACRES	48.41 %
SIDEWALK	1,832 SF 0.04 ACRES	5.91 %
TOTAL IMPERVIOUS AREA (ON-SITE)	19,342 SF 0.45 ACRES	62.36 %
GREEN/OPEN SPACE	11,675 SF 0.27 ACRES	37.64 %
INCREASE IN ON-SITE IMPERVIOUS AREA	19,342 SF	
PROPOSED OFF-SITE PAVEMENT	158 SF 0.004 ACRES	

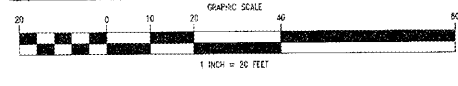
SIGHT TRIANGLE NOTES
 WITHIN THE SIGHT TRIANGLE'S SIGHT LINE THIS PROJECT AND OBSTRUCTION BETWEEN TWO POINTS AND EIGHT (8) FEET HEIGHT ABOVE THE CURB LINE ELEVATION OF THE FASTEST TRAVELLED WAY, IF ANY OBSTRUCTION EXISTS
 ALL CONSTRUCTION TO BE IN ACCORDANCE WITH ALL CITY OF FAYETTEVILLE STANDARDS AND SPECIFICATIONS

SIGN LEGEND

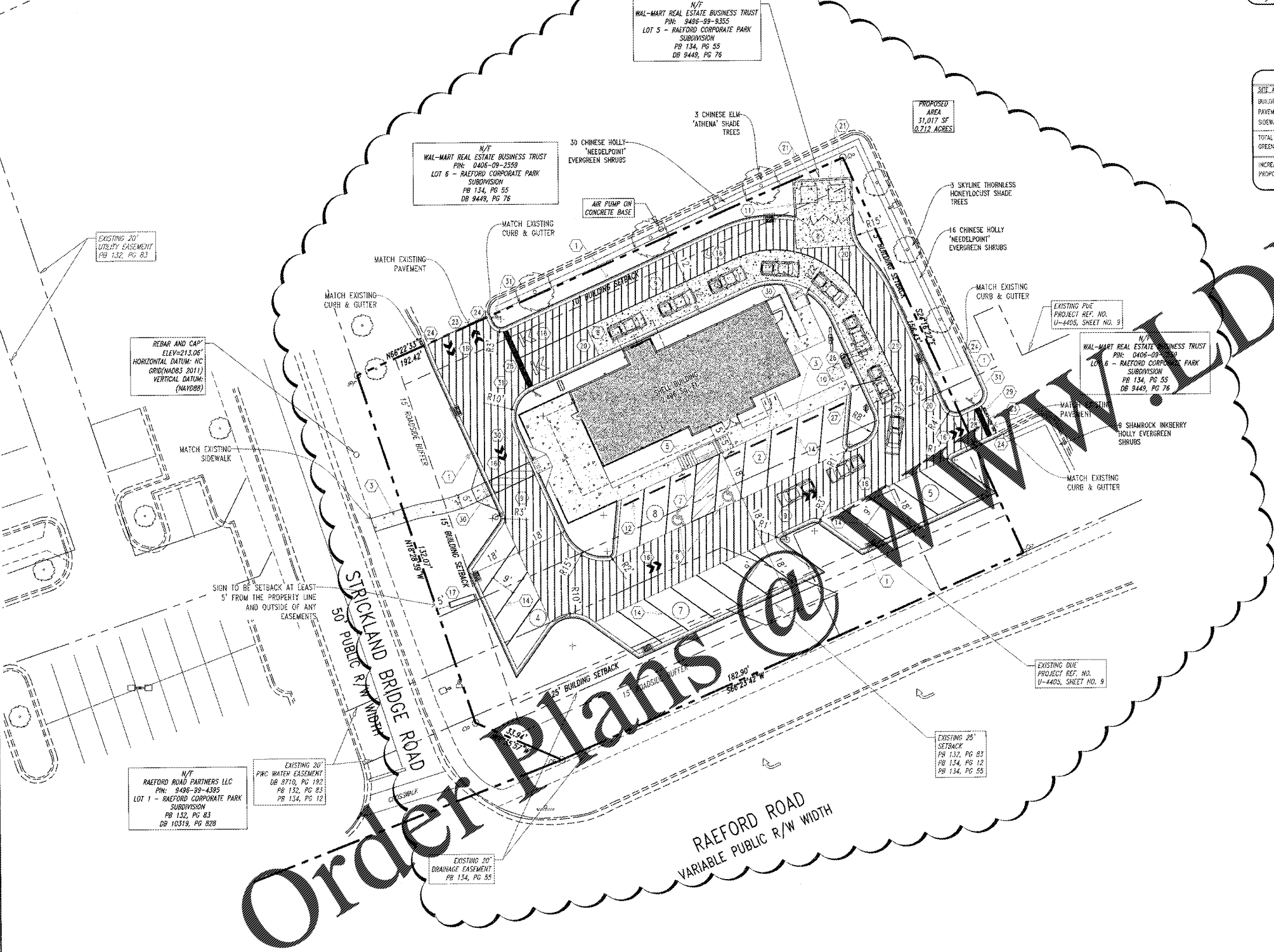
LEGEND	QTY.
	2
	3

- KEYNOTES**
- CONSTRUCT 1'-6" CONCRETE CURB AND GUTTER PER DETAIL SHEET
 - BIKE RACK
 - CONSTRUCT CONCRETE SIDEWALK PER DETAIL SHEET
 - CONSTRUCT CONCRETE SIDEWALK FINISH WITH ASPHALT PAVEMENT (NOT USED)
 - CONSTRUCT CONCRETE HANDICAP RAMP PER DETAIL SHEET
 - HANDICAP PARKING STALL
 - INSTALL HANDICAP PARKING SIGN PER DETAIL SHEET
 - PROVIDE A 3' LANE CONSTRUCTED OF 6" THICK STAINED BLACK, REINFORCED CONCRETE (606 10/10 WWF)
 - ASPHALT PAVEMENT PER DETAIL SHEET
 STANDARD DUTY PAVEMENT
 HEAVY DUTY PAVEMENT
 SCOOT PAVEMENT SECTION
 - TRANSFORMER PAD BY GENERAL CONTRACTOR PER ELECTRIC COMPANY SPECS. (COORDINATE SIZE & LOCATION WITH THE COMPANY)
 - CONSTRUCT DUMPSTER PAD 8' CONCRETE WITH 4" ABC BASE AND TRASH ENCLOSURE WITH GATE PER ARCHITECTURAL DETAILS FOR DETAIL MATERIALS TO MATCH BUILDING
 - CONCRETE CURB PER DETAIL SHEET
 - POST MOUNTED LIGHTS PER LIGHTING PLAN
 - PAINT WIDE STRIPES WHITE (SEE "PAINT STRIPING NOTES") (PER TENANT DETAILS AND FINAL ARCHITECTURAL MATCH TENANT DRAWINGS)
 - PER 4" WIRE STRIPS @ 45', 2 FEET APART (PER TENANT DETAILS AND FINAL LOCATION MATCH TENANT DRAWINGS)
 - PAINT TRAFFIC ARROWS PER DETAIL SHEET
 - SITE IDENTIFICATION SIGN, INSTALL AND PERMIT PER CITY STANDARDS. COORDINATE WITH OWNER. (LOCATE PER FINAL TENANT DRAWING LOCATION)
 - PERVIOUS CONCRETE PER DETAIL SHEET (NOT USED)
 - CONCRETE FLUME PER DETAIL SHEET
 - ASPHALT/CONCRETE TRANSITION PER DETAIL SHEET
 - INSTALL PIPE BOLLARD PER DETAIL SHEET (FURNISH & INSTALL 6" DIA. STEEL PIPE BOLLARDS FILLED W/ CONCRETE, PAINTED AND LOCATED PER TENANT DRAWINGS)
 - INSTALL ILLUMINATED BOLLARD
 - MATCH EXISTING ASPHALT PAVEMENT
 - MATCH EXISTING CURB & GUTTER
 - PREVIEW BOARD, SEE ARCHITECTURAL PLANS FOR DETAILS (FINAL LOCATIONS TO BE COORDINATED W/ TENANT FINAL DRAWINGS)
 - MENU BOARD AND SPEAKER POST, SEE ARCHITECTURAL PLANS FOR DETAILS (FINAL LOCATIONS TO BE COORDINATED W/ TENANT FINAL DRAWINGS)
 - CLEARANCE BAR, SEE ARCHITECTURAL PLANS FOR DETAILS (FINAL LOCATIONS TO BE COORDINATED W/ TENANT FINAL DRAWINGS)
 - PAINT 24" STOP BAR PER DOT AND MUTCD STANDARDS
 - PAINT "DO NOT ENTER" PER DOT MUTCD STANDARDS
 - INSTALL TRUNCATED DOMES PER HANDICAP RAMP DETAILS
 - INSTALL "STOP" SIGN PER DOT AND MUTCD STANDARDS
 - INSTALL "AHEAD" SIGN (R4-7-24) PER DOT AND MUTCD STANDARDS
 - INSTALL "NO LEFT TURN" (R3-2-24) SIGN PER DOT AND MUTCD STANDARDS ON SAME ASSEMBLY, UPGRADE/REPLACE AS STOP SIGN
 - STAMPED CONCRETE - COLOR & PATTERN TO BE DETERMINED BY TENANT
 - NOSE DOWN CURB
 - RELOCATE EXISTING UTILITY POLE, CONTRACTOR SHALL COORDINATE WITH UTILITY COMPANY.
 - CONCRETE LOADING RAMP, 6% MAXIMUM SLOPE (NOT USED)
 - DOUBLE YELLOW CENTERLINE STRIPES (SEE DRIVEWAY NOTES FOR MATERIAL, COLOR AND SPECIFICATIONS)

- GENERAL NOTES**
- THE CONTRACTOR SHALL EMPLOY ALL NECESSARY BARRICADES, SIGNS, FENCES, FLASHING LIGHTS, FLAGMEN, ETC. FOR MAINTENANCE AND PROTECTION OF TRAFFIC AS REQUIRED BY CITY OF FAYETTEVILLE AND THE NORTH CAROLINA DEPARTMENT OF TRANSPORTATION. REFER TO THE MANUAL ON UNIFORM TRAFFIC CONTROL DEVICES (MUTCD), LATEST EDITION, FOR DETAILS OF TRAFFIC CONTROL STANDARDS AND DEVICES.
 - THE CONTRACTOR SHALL PROTECT ALL MONUMENTS, IRON PINS, AND PROPERTY CORNERS DURING CONSTRUCTION.
 - APPROVAL OF THESE PLANS IS NOT AN AUTHORIZATION TO GRADE ADJACENT PROPERTIES. WHEN FIELD CONDITIONS WARRANT OFF-SITE GRADING, PERMISSION MUST BE OBTAINED FROM THE AFFECTED PROPERTY OWNERS.
 - COORDINATE ALL CURB AND STREET GRADES IN INTERSECTIONS WITH INSPECTOR.
 - ALL WORK SHALL BE PERFORMED IN ACCORDANCE WITH THE LATEST EDITION OF THE NORTH CAROLINA DEPARTMENT OF TRANSPORTATION "STANDARD DETAILS AND SPECIFICATIONS FOR ROAD AND BRIDGE CONSTRUCTION" AND APPLICABLE CITY OF FAYETTEVILLE CODES AND ORDINANCES. THE CONTRACTOR SHALL MAINTAIN A CURRENT EDITION OF THE STATE AND LOCAL CODES, ORDINANCES, STANDARD SPECIFICATION AND STANDARD DETAILS ON THE PROJECT SITE FOR REFERENCE DURING CONSTRUCTION OF THE PROJECT.
 - THE CONTRACTOR SHALL VERIFY ALL DIMENSIONS IN THE FIELD PRIOR TO THE START OF CONSTRUCTION. THE CONTRACTOR SHALL BE RESPONSIBLE FOR ALL FIELD DIMENSIONS AND SHALL REPORT ANY DISCREPANCIES BETWEEN THE PLANS AND ACTUAL FIELD CONDITIONS TO THE OWNER OR OWNER'S REPRESENTATIVE IMMEDIATELY. CONTRACTOR SHALL WAIT FOR INSTRUCTION PRIOR TO PROCEEDING WITH WORK.
 - THE CONTRACTOR SHALL PROVIDE SMOOTH TRANSITIONS FROM PROPOSED FEATURES TO EXISTING FEATURES AS NECESSARY.
 - THE CONTRACTOR SHALL SEAL THE EDGE OF EXISTING ASPHALT PAVEMENT WITH TACK COAT BY ACCORDANCE WITH THE NORTH CAROLINA DEPARTMENT OF TRANSPORTATION STANDARD SPECIFICATIONS WHERE NEW PAVEMENT JOINS EXISTING PAVEMENT.
 - THE CONTRACTOR SHALL REPAIR, REINFORCE, RECONSTRUCT OR REBUILT ANY AREAS DAMAGED DURING CONSTRUCTION BY THE CONTRACTOR, HIS SUBCONTRACTORS OR SUPPLIERS AT NO ADDITIONAL COST TO THE OWNER.
 - ALL PAYMENT JOINTS SHALL BE SAW-CUT PRIOR TO PAYING TO PROVIDE A DURABLE AND UNIFORM JOINT.
 - CONTRACTOR SHALL REFER TO ARCHITECTURAL PLANS FOR EXACT LOCATIONS AND DIMENSIONS OF TRUCK BODYS, EXIT DOORS, SIDEWALKS, PRECISE BUILDING DIMENSIONS, AND EXACT BUILDING UTILITY ENTRANCE LOCATIONS.
 - ALL PAINT STRIPING, PAVEMENT MARKINGS, AND SIGNAGE SHALL CONFORM TO THE "MANUAL ON UNIFORM TRAFFIC CONTROL DEVICES" OR AS OTHERWISE SPECIFIED. ALL REFERENCED SIGN STANDARDS ARE TAKEN FROM THE "MANUAL ON UNIFORM TRAFFIC CONTROL DEVICES". ALL NEW SIGNS SHALL BE MOUNTED ON GALVANIZED POSTS AND IN ACCORDANCE WITH STATE AND LOCAL REGULATIONS.
 - CONTRACTOR SHALL INSTALL ACCESSIBLE RAMPS PER LOCAL MUNICIPALITY AND ADA STANDARDS AT ALL DRIVE AND BUILDING LOCATIONS AS REQUIRED.
 - THE CONTRACTOR IS RESPONSIBLE FOR THE LOCATION AND PROTECTION OF ALL EXISTING UTILITIES DURING CONSTRUCTION. AT LEAST 48 HOURS PRIOR TO ANY DEMOLITION, GRADING, OR CONSTRUCTION ACTIVITY THE CONTRACTOR SHALL NOTIFY THE CITY OF FAYETTEVILLE PUBLIC UTILITIES DEPARTMENTS FOR PROPER IDENTIFICATION OF EXISTING UTILITIES WITHIN THE PROJECT SITE.



Order Plans @



TRIANGLE SITE DESIGN

CONSULTANT:
 TRIANGLE SITE DESIGN, PLLC
 4004 BARRETT DR, STE 101
 RALEIGH, NC 27609
 (919) 553-6570



OWNER/DEVELOPER:
 Raeford Rd Fayetteville 2019, LLC
 Hartzog Holdings, LLC
 Attn: Collins Hartzog
 109 SRH Wild Lane
 Elgin, SC 29045
 803-361-6718
 collins@hartzogholdings.com



Starbucks
 920 Strickland Bridge Road
 Fayetteville, NC
 Cumberland County

This document, together with the concepts and designs presented herein, as an instrument of services, is intended only for the specific purpose and client for which it was prepared. Reuse of and improper reliance on this document without written authorization and adaptation by Triangle Site Design, PLLC shall be without liability to Triangle Site Design, PLLC.

REVISIONS

No.	Date	Description
1	10/14/19	REVISED PER CITY OF FAYETTEVILLE REVIEW
2	10/29/19	REVISED PER CITY OF FAYETTEVILLE REVIEW AND CLAS COMMERCIAL PARTNERS COMMENTS
3	12/20/19	REVISED PER FAYETTEVILLE PNC REVIEW
4	1/7/20	REVISED PER STARBUCKS REVIEW

Drawn: [Blank]
 Checked: [Blank]
 Approved: [Blank]

Project No. 009016
 Date: November 1, 2019
 Title: **SITE PLAN**

Sheet No. **C1.0**