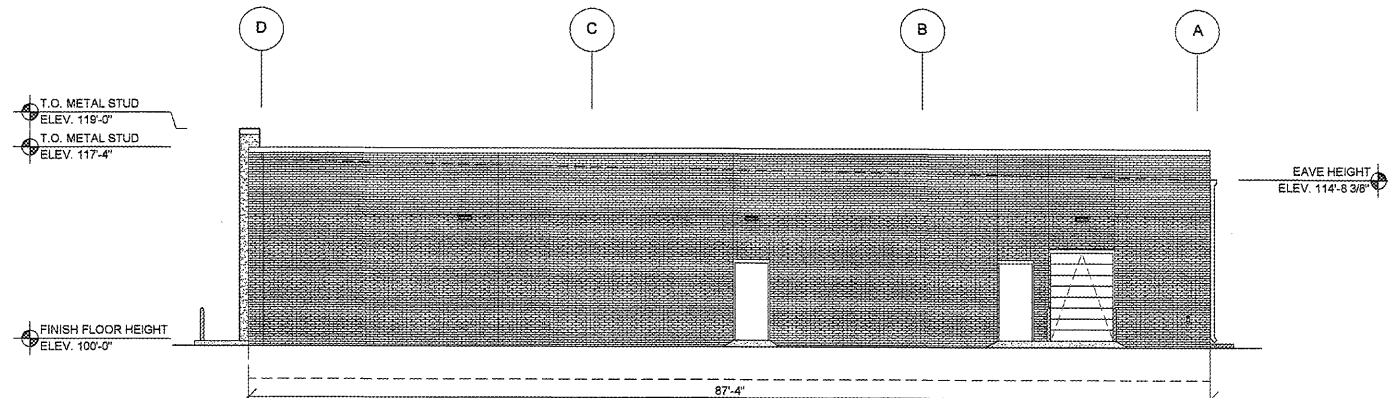


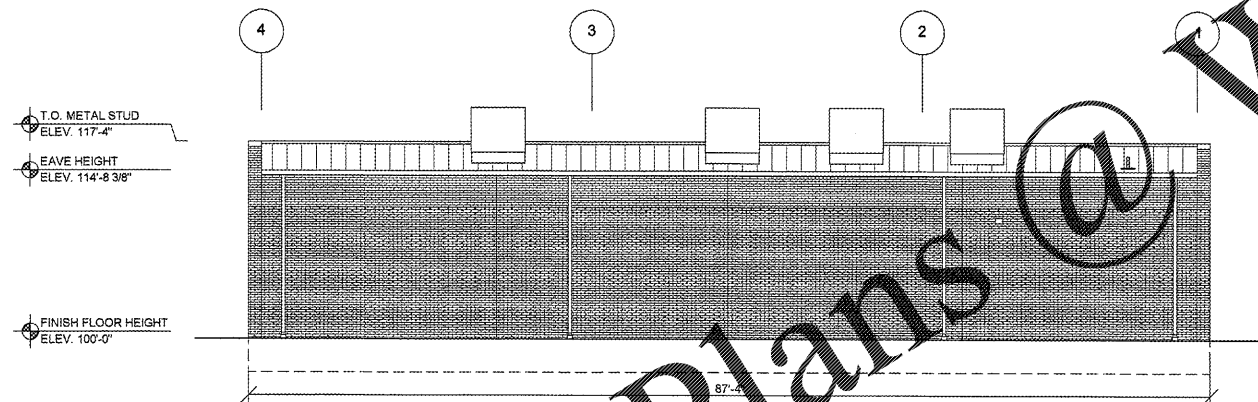
1 FRONT EXTERIOR ELEVATION

SQ2.1 SCALE: 1/8" = 1'-0"



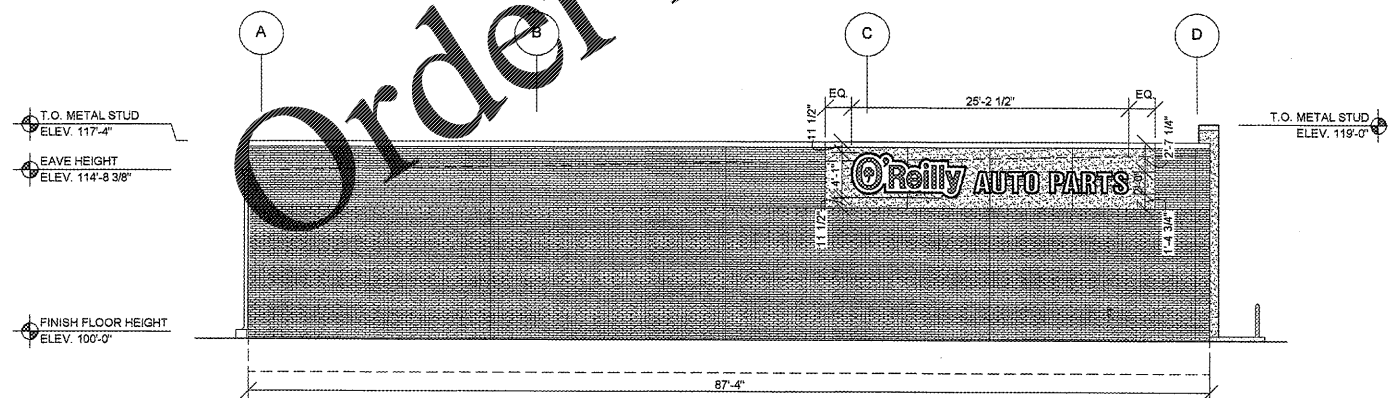
2 RIGHT EXTERIOR ELEVATION

SQ2.1 SCALE: 1/8" = 1'-0"



3 REAR EXTERIOR ELEVATION

SQ2.1 SCALE: 1/8" = 1'-0"



4 LEFT EXTERIOR ELEVATION

SQ2.1 SCALE: 1/8" = 1'-0"

BUILDING SIGN SCHEDULE

FRONT EXTERIOR ELEVATION:
 TYPE: OR 63" / 31" AP LINEAR
 DETAIL: REFER TO 5/SQ2.1

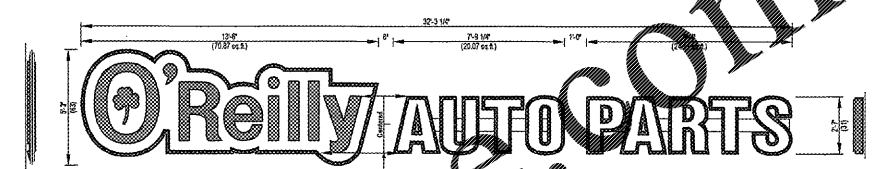
RIGHT EXTERIOR ELEVATION:
 TYPE: NO SIGN
 DETAIL:

REAR EXTERIOR ELEVATION:
 TYPE: NO SIGN
 DETAIL:

LEFT EXTERIOR ELEVATION:
 TYPE: OR 49" / 24" AP LINEAR

GENERAL NOTES

- (A) CONTACT OWNER'S OR TENANT'S DESIGNATED PROJECT ADMINISTRATOR FOR QUESTIONS OR CLARIFICATIONS.
- (B) BUILDING PERMANENT SIGNAGE OWNER FURNISHED AND INSTALLED. (REFER TO SCOPE OF WORK SCHEDULE). SIGNAGE GRAPHICS PROVIDED FOR REFERENCE ONLY (N.I.C.) AND CONTRACTOR'S COORDINATION WITH SPECIFIC PROJECT CONSTRUCTION CONDITIONS. CONTRACTOR TO PROVIDE BACKING AND ROUGH-IN ELECTRICAL AS REQUIRED FOR INSTALLATION. REFER TO A2.1 FOR EXTERIOR BUILDING FINISH.
- (C) REQUIRED GOVERNMENTAL PERMITS FOR PERMANENT TYPE SIGNAGE TO BE PROVIDED BY OWNER OR OTHERS (N.I.C.).



5 FRONT WALL SIGN ELEVATION

SQ2.1 SCALE: 1/4" = 1'-0"

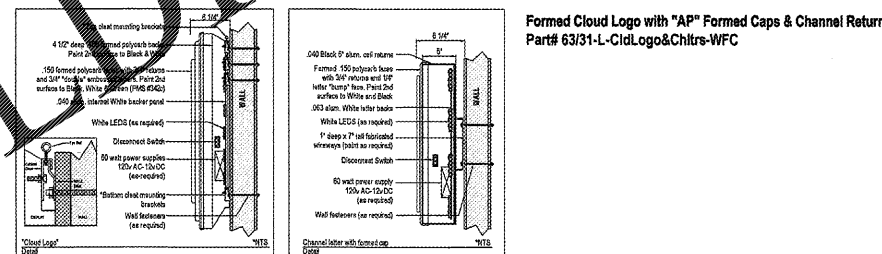
Side View
"O'Reilly"
Scale 1/4" = 1'-0"

Front View
Scale 1/4" = 1'-0"

Part# 63/31-L-CldLogo&Chtrs-WFC
116 sq. ft. (Combined Individual Components) 166.42 (Encompassed Rectangle)

Side View
"AUTO PARTS"
Scale 1/4" = 1'-0"

*"O'Reilly" Cloud Logo with "AP" channel letters on 1" (h) x 1" (d) wireways. Wireway paint to: OAP RED
 *"O'Reilly" Cloud Logo is formed polycarb with double embossed with 2nd surface painted graphics. Paint match to: Green (PMS# 342c), Black and White.
 *"AP" to have formed polycarb caps with 1/4" letter "bumps". Black 5" aluminum coil returns. 2nd surface Black and White paint. WHITE LED illumination.



6 FRONT WALL SIGN MOUNTING DETAILS

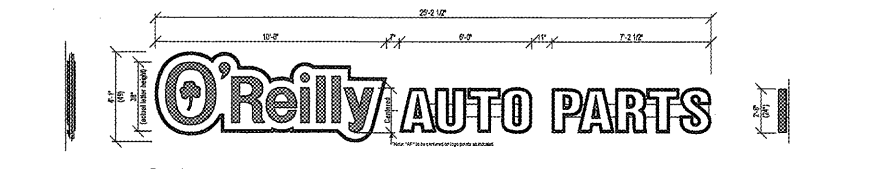
SQ2.1 SCALE: 1/4" = 1'-0"

Formed Cloud Logo with "AP" Formed Caps & Channel Returns
 Part# 63/31-L-CldLogo&Chtrs-WFC

Formed Embossed Cloud Logo
 AUTO PARTS Channel Letters
 with Formed Embossed Caps
 Part# 49/24-L-CldLogo&Chtrs-WFC

O'Reilly Auto Parts
 233 Patterson St.
 Springfield, MO 65803

The original work is protected under Patent Copyright Laws. Write to request a copy. Reproduction without permission. Property of O'Reilly Automotive Inc. Colors as shown are not necessarily color matches.



7 LEFT WALL SIGN ELEVATION

SQ2.1 SCALE: 1/4" = 1'-0"

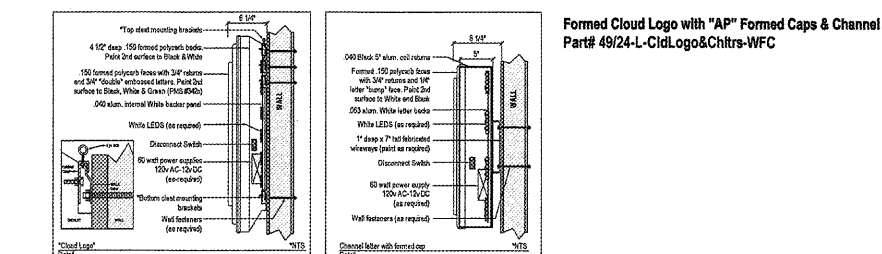
Side View
"O'Reilly"
Scale 1/4" = 1'-0"

Front View
Scale 1/4" = 1'-0"

Part# 49/24-L-CldLogo&Chtrs-WFC
69.29 sq. ft. (Combined Individual Components) 102.93 (Encompassed Rectangle)

Side View
"AUTO PARTS"
Scale 1/4" = 1'-0"

*"O'Reilly" Cloud Logo with "AP" channel letters on 1" (h) x 1" (d) wireways. Wireways paint to: TBD
 *"O'Reilly" Cloud Logo is formed polycarb with double embossed with 2nd surface painted graphics. Paint match to: Green (PMS# 342c), Black and White.
 *"AP" to have formed polycarb caps with 1/4" letter "bumps". Black 5" aluminum coil returns. 2nd surface Black and White paint. WHITE LED illumination.



8 FRONT WALL SIGN MOUNTING DETAILS

SQ1.1 SCALE: 1/4" = 1'-0"

DESIGN BY OTHERS FOR REFERENCE ONLY

CRAIG A. SCHNEIDER, AIA
 ARCHITECT
 1736 East Linn, Suite 417
 Springfield, Missouri 65804
 417.862.0558
 Fax: 417.862.3265
 e-mail: architect@estefschneider.com

PROJECT:
 NEW O'REILLY AUTO PARTS STORE
 290 DEACON ROAD
 FREDERICKSBURG, VA #4
 BUILDING EXTERIOR SIGNAGE

O'Reilly AUTO PARTS
 CORPORATE OFFICES
 233 SOUTH PATTERSON
 SPRINGFIELD, MISSOURI 65802
 (417) 862-2674 TELEPHONE

COMM # 4251
 DATE: 11-2-18
 REVISION
 DATE: 3-25-19

SG2.1