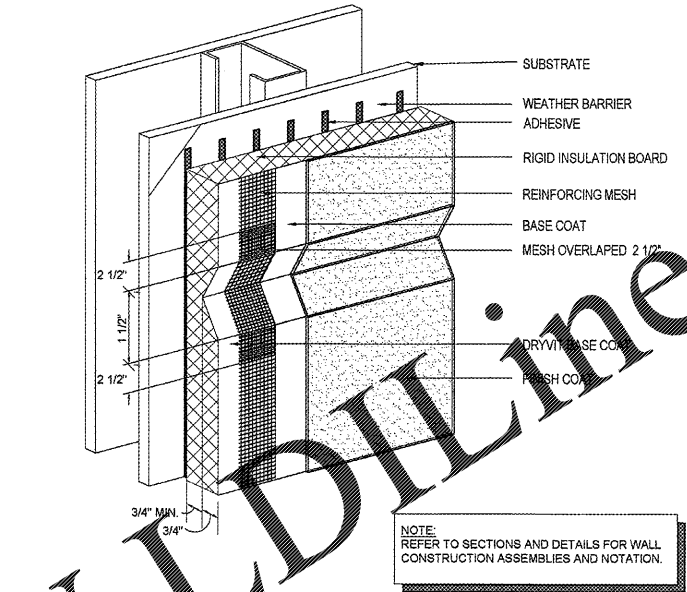
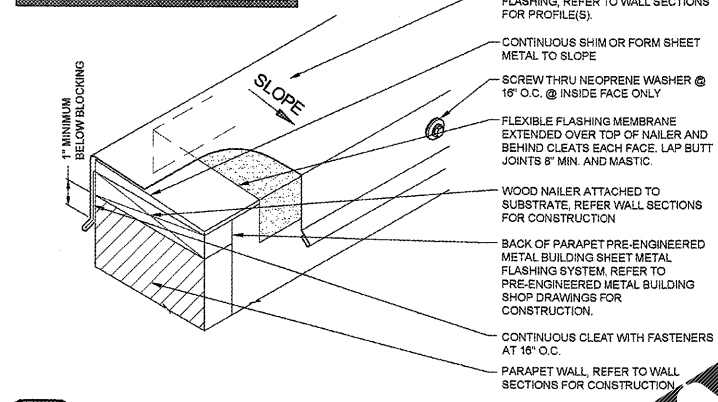


NOTE: REFER TO SECTIONS AND DETAILS FOR WALL CONSTRUCTION ASSEMBLIES AND NOTATION.



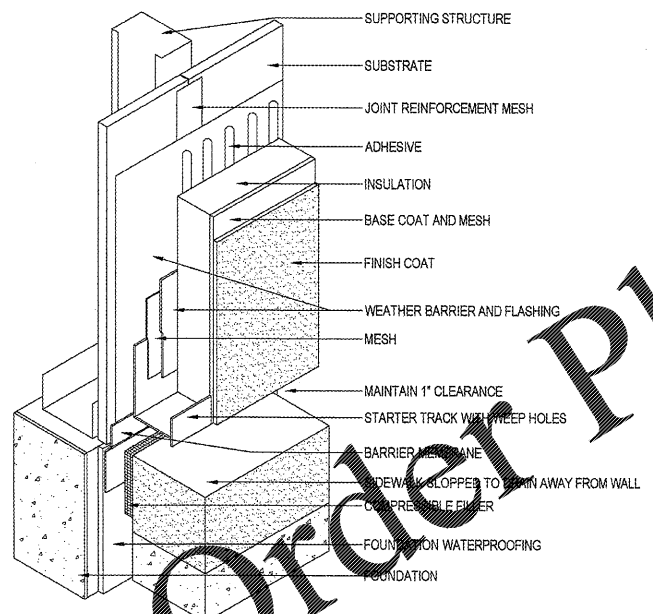
NOTE: REFER TO SECTIONS AND DETAILS FOR WALL CONSTRUCTION ASSEMBLIES AND NOTATION.

NOTES:
1. INSTALLATION TO BE COMPLETED IN ACCORDANCE WITH MANUFACTURER'S SPECIFICATIONS.

1 (NOT USED)
A6.1 SCALE: N.T.S.

2 TYPICAL COPING FLASHING DETAIL
A6.1 SCALE: N.T.S.

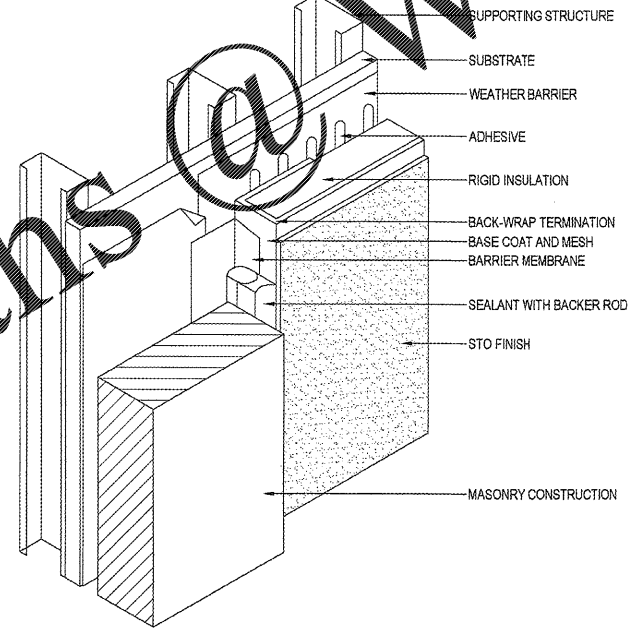
3 EIFS DECORATIVE JOINT DETAIL
A6.1 SCALE: N.T.S.



NOTE: REFER TO SECTIONS AND DETAILS FOR WALL CONSTRUCTION ASSEMBLIES AND NOTATION.

NOTES:
1. INSTALLATION TO BE COMPLETED IN ACCORDANCE WITH MANUFACTURER'S SPECIFICATIONS.

4 EIFS TERMINATION DETAIL
A6.1 SCALE: N.T.S.



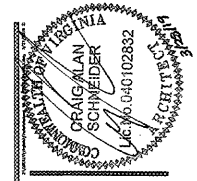
NOTE: REFER TO SECTIONS AND DETAILS FOR WALL CONSTRUCTION ASSEMBLIES AND NOTATION.

NOTES:
1. INSTALLATION TO BE COMPLETED IN ACCORDANCE WITH MANUFACTURER'S SPECIFICATIONS.

5 EIFS TERMINATION DETAIL
A6.1 SCALE: N.T.S.

GENERAL NOTES

- (A) REFER TO PROJECT MANUAL AND SCOPE OF WORK SCHEDULE FOR ADDITIONAL REQUIREMENTS.
- (B) SHEET METAL AND ROOFING CONSTRUCTION SHALL COMPLY WITH NATIONAL ROOFING CONTRACTORS ASSOCIATION (NRCA) AND SHEET METAL AND AIR CONDITIONING CONTRACTORS NATIONAL ASSOCIATION (SMACNA) DESIGN STANDARDS AND RECOMMENDATIONS.



CRAIG A. SCHNEIDER, AIA
ARCHITECT
1736 East Sunshine, Suite 417
Springfield, Missouri 65804
417.862.0558
417.862.3265
e-mail: architect@estefschneider.com

PROJECT:
NEW O'REILLY AUTO PARTS STORE
290 DEACON ROAD
FREDERICKSBURG, VA #4
EXTERIOR DETAILS

O'Reilly AUTO PARTS
CORPORATE OFFICES
10000 PALM BLVD
SPRINGFIELD, MISSOURI 65802
(417) 862-2674 TELEPHONE

COMM #	4251
DATE:	11-2-18
REVISION	
DATE:	3-25-19