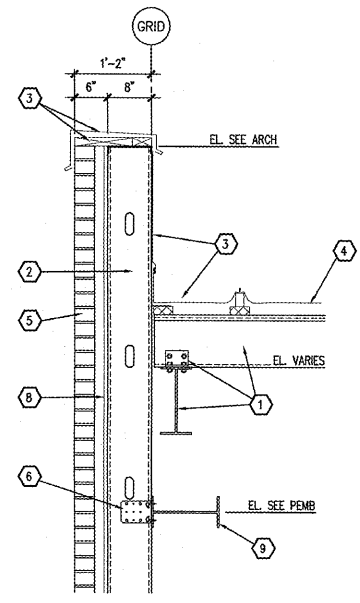
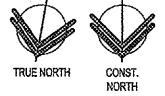
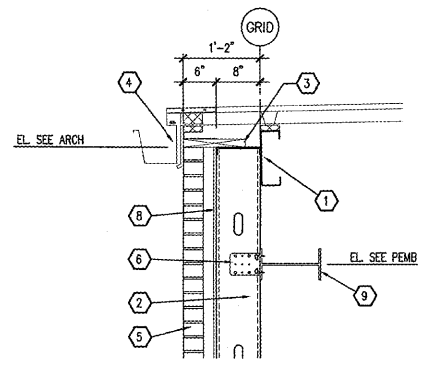


PROVIDE 16ga COLD-FORMED STEEL FRAMING AT ENTRY LOCATION. WHERE APPLICABLE ALIGN FRAMING MEMBERS WITH METAL STUDS OVER STOREFRONT (SPACING NOT TO EXCEED 24" O.C.) ALL COLD-FORMED STEEL-TO-COLD-FORMED STEEL CONNECTIONS TO BE A MINIMUM OF (3) #8 SDS. REFER TO ARCHITECTURAL SECTIONS FOR FRAMING PROFILES AND MEMBER DEPTHS.

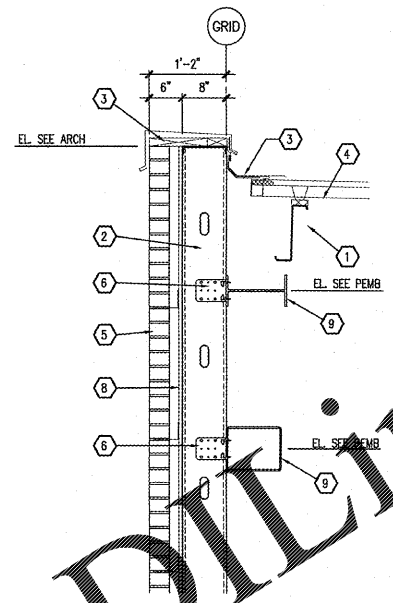
**ROOF KEY PLAN**  
 SCALE: NONE



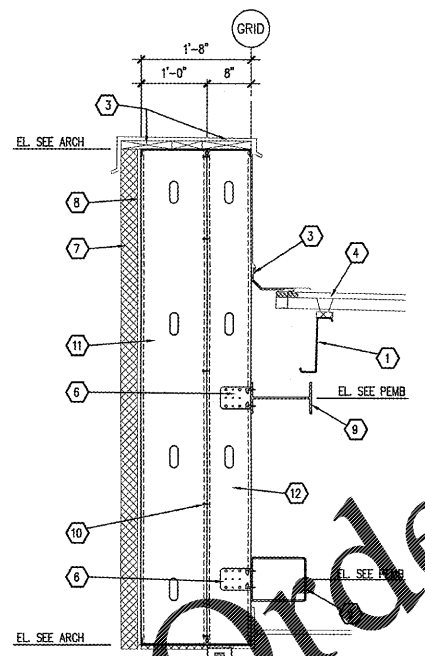
**1 SECTION**  
 S4 SCALE: 3/4" = 1'-0"



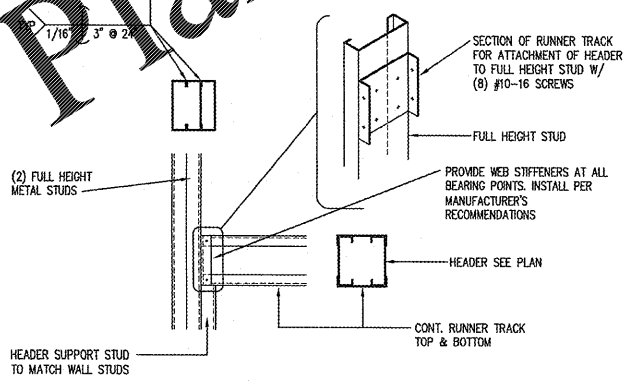
**2 SECTION**  
 S4 SCALE: 3/4" = 1'-0"



**3 SECTION**  
 S4 SCALE: 3/4" = 1'-0"



**4 SECTION**  
 S4 SCALE: 3/4" = 1'-0"



**5 SECTION**  
 S4 SCALE: NONE

**KEYNOTES**

- 1 PRE-ENGINEERED METAL BUILDING STRUCTURAL SYSTEM. SEE P.E.M.B. SHOP DRAWINGS FOR ALL MEMBERS AND CONNECTIONS.
- 2 8"x18 ga. METAL STUDS (800S162-43) @ 24" O.C. SEE STRUCTURAL NOTES FOR BLOCKING/BRIDGING REQUIREMENTS AND ADDITIONAL INFORMATION.
- 3 REFER TO ARCHITECTURAL DRAWINGS FOR FLASHING AND PARAPET CAP.
- 4 PRE-ENGINEERED METAL BUILDING ROOFING SYSTEM. SEE P.E.M.B. SHOP DRAWINGS FOR ADDITIONAL INFORMATION.
- 5 MASONRY OR BRICK VENEER. SEE ARCHITECTURAL ELEVATIONS FOR ADDITIONAL INFORMATION.
- 6 16 ga SIMPSON FCB 43.5 CONNECTOR W/ (4) #12-14 SCREWS TO STUDS AND (2) #12-24 TO MIN. 3/16" THICK STEEL.
- 7 REFER TO ARCHITECTURAL FOR WALL FINISHES.
- 8 REFER TO ARCHITECTURAL DRAWINGS FOR EXTERIOR WALL SHEATHING. WALL SHEATHING SHALL BE ATTACHED TO EACH STUD PER SHEATHING MANUFACTURER'S REQUIREMENTS. MIN. PRESSURES INDICATED ON SHEET S1. MINIMUM ATTACHMENT REQUIREMENTS TO BE #8 CORROSION-RESISTANT (1" LONG) SCREWS @ 12" O.C. AT PERIMETER OF SHEETS AND AT 8" O.C. IN THE INTERIOR FIELD.
- 9 PRE-ENGINEERED METAL BUILDING WIND BEAM. SEE P.E.M.B. SHOP DRAWINGS FOR LOCATIONS.
- 10 CONNECT STUDS TOgether WITH #12 SCREWS @ 24" O.C.
- 11 12"x16 ga METAL STUDS (1200S162-54) @ 24" O.C.
- 12 8"x18 ga. METAL STUDS (800S162-54) @ 24" O.C. SEE STRUCTURAL NOTES FOR BLOCKING/BRIDGING REQUIREMENTS AND ADDITIONAL INFORMATION.

Order Plans @ [www.LDilines.com](http://www.LDilines.com)



**Craig A. Sweidler, AIA**  
 ARCHITECT  
 1736 East Sunshine, Suite 417  
 Springfield, Missouri 65802  
 417-862-0558  
 Fax: 417-862-3265  
 e-mail: architect@esterysweidler.com

PROJECT:  
**NEW O'REILLY AUTO PARTS STORE**  
 290 DEACON ROAD  
 FREDERICKSBURG, VA #4  
**FRAMING DETAILS**

**O'Reilly AUTO PARTS**  
 CORPORATE OFFICES  
 290 SOUTH P. HIGHWAY  
 SPRINGFIELD, MISSOURI 65802  
 (417) 862-2674 TELEPHONE

COMM #	4251
DATE:	11-2-18
REVISION	
DATE:	3-25-19

**Jeffrey S. Smith, P.E.**  
 Jeffrey S. Smith P.E. 018070  
 P.O. Box 8102 \* JOPLIN, MISSOURI 64802  
 PHONE: 417-824-0444 \* FAX: 417-824-0430