

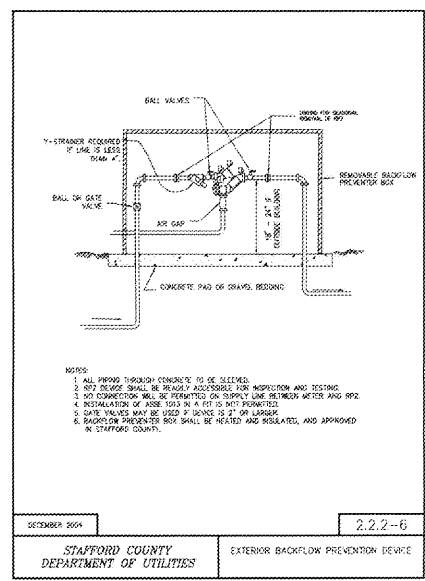
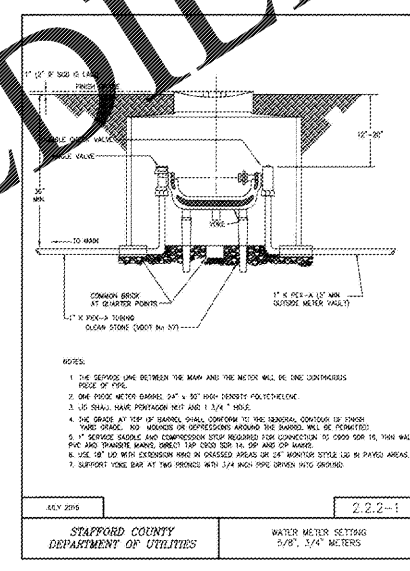
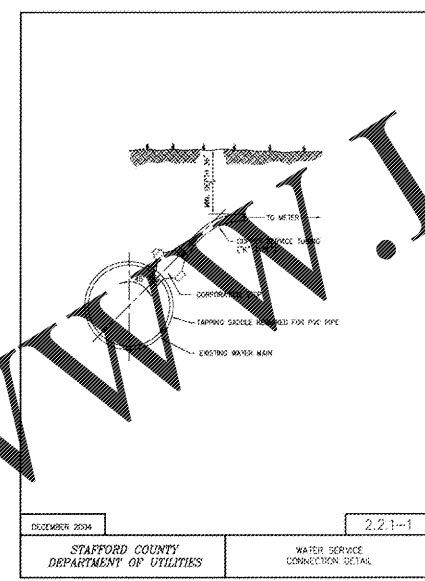
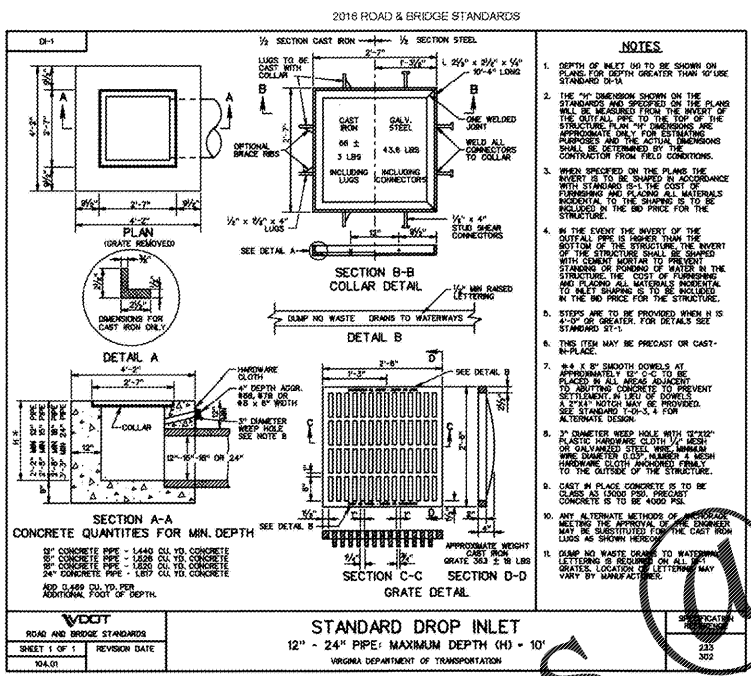
CRAIG A. SCHNEIDER, AIA
ARCHITECT
 1736 East Sunshine, Suite 417
 Springfield, Missouri 65804
 e-mail: architect@ctctvtsbno@aol.com
 417.862.8558
 417.862.3265

PROJECT:
NEW O'REILLY AUTO PARTS STORE
290 DEACON ROAD
FREDERICKSBURG, VA #4
UTILITY DETAILS

O'Reilly AUTO PARTS
 CORPORATE OFFICES
 233 SOUTH PATTERSON
 SPRINGFIELD, MISSOURI 65802
 (417) 862-2674 TELEPHONE

COMM # 4251
 DATE: 11-2-18
 REVISION
 DATE: 03-25-19
 06-24-19

C4.2



*NOTE: CONTRACTOR TO MODIFY DIMENSION "H" FOR STRUCTURE C-3 AS SHOWN ON SHEET C4.3. THE PROPOSED LOW CLEARANCE STRUCTURE SHALL BE CAST IN PLACE.

Order Plans

DATE: 06/21/19
 TIME: 10:00 AM
 USER: JSM



BOHLER ENGINEERING
 28 BLACKWELL PARK LANE, SUITE 201 WARRINGTON, VA 22196
 PHONE: (540) 343-4500 FAX: (540) 343-0321

PROJECT No. V183201 SCALE: AS NOTED
 DRAWN BY / CHECKED BY: DSH/JQR CAD I.D.: SDJ