



### GENERAL NOTES

- (A) REFER TO PROJECT MANUAL AND SCOPE OF WORK SCHEDULE FOR ADDITIONAL REQUIREMENTS.
- (B) SITE DIMENSIONS TO FACE OF CONCRETE FOUNDATION, SIDEWALK, CURB, GUTTER LINE, PROPERTY LINE, OR CENTER LINE OF STRIPING UNLESS OTHERWISE NOTED.
- (C) COORDINATE WORK WITH OTHER SITE RELATED DEVELOPMENT DRAWINGS.
- (D) PRIOR TO INSTALLATION, CONTRACTOR TO VERIFY LOCATIONS OF LIGHT POLES, LANDSCAPING, AND UTILITIES DO NOT CONFLICT WITH SITE SIGN LOCATION SHOWN. IF CONFLICT IS DISCOVERED, CONTRACTOR TO NOTIFY OWNER'S REPRESENTATIVE PRIOR TO PROCEEDING WITH THE WORK.
- (E) "COMING SOON" TEMPORARY CONSTRUCTION SIGN TO BE PROVIDED BY CONTRACTOR. APPLIED SIGNAGE GRAPHICS TO BE OWNER FURNISHED AND CONTRACTOR INSTALLED. LOCATE TEMPORARY CONSTRUCTION SIGN ON SITE SO AS TO BE VISIBLE TO PUBLIC FROM RIGHT-OF-WAY. REFER TO DETAIL 1/SG1.2.

SPECIAL NOTE:  
AVOID OBSCURING VISIBILITY OF THE SIGN FROM RIGHT OF WAY WITH LANDSCAPING AND UTILITIES. SUBMIT LANDSCAPING LAYOUT FOR OWNER REVIEW AND APPROVAL PRIOR TO INSTALLATION.

### KEY NOTES

- 1 SITE SIGN, REFER TO ELEVATION 2/SG1.2
- THIS PLAN TO BE UTILIZED FOR SITE SIGNAGE PURPOSES ONLY

**CRAIG A. SCHNEIDER, AIA**  
ARCHITECT  
1736 East Sunshine, Suite 417  
Springfield, Missouri 65804  
417-862-8568  
Fax: 417-862-3265  
e-mail: architect@estertyschneider.com

PROJECT:  
**NEW O'REILLY AUTO PARTS STORE**  
U.S. HIGHWAY 11  
STRASBURG, VA  
**SITE SIGNAGE PLAN**

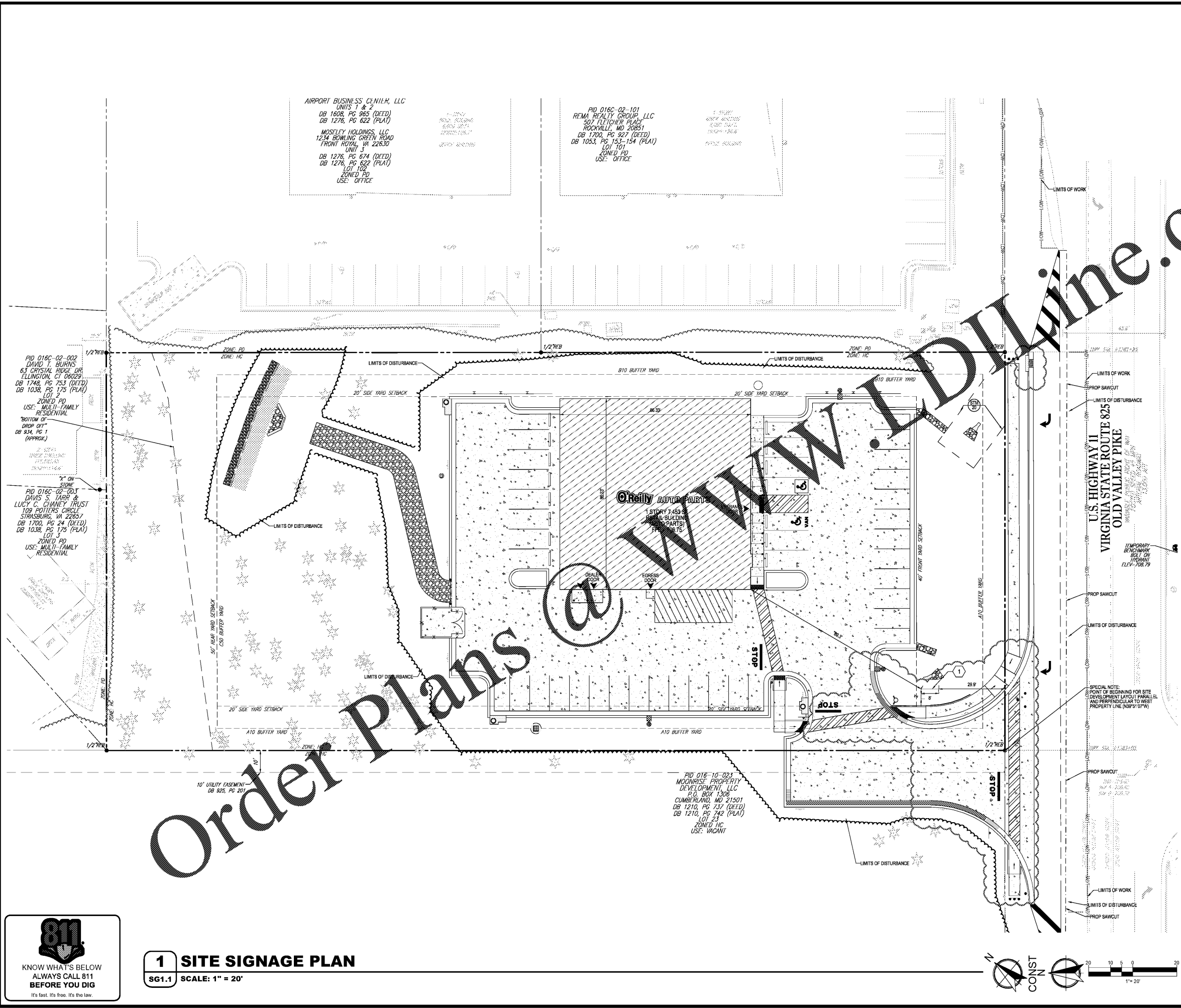
**O'Reilly AUTO PARTS**  
CORPORATE OFFICES  
233 SOUTH PATTERSON  
SPRINGFIELD, MISSOURI 65802  
(417) 862-2874 TELEPHONE

COMM #	4253
DATE:	11-2-18
REVISION	
DATE:	3-8-19
	6-20-19
	9-27-19

# SG1.1



PROJECT No. V183204 SCALE: 1"=20'  
DRAWN BY / CHECKED BY DSH/JOR CAD I.D. SS2



# Order Plans @

**1 SITE SIGNAGE PLAN**  
SG1.1 SCALE: 1" = 20'

