

FOR INFORMATIONAL USE ONLY

CRAIG A. SCHNEIDER, AIA
 ARCHITECT
 1736 East Sunshine, Suite 417
 Springfield, Missouri 65804
 e-mail: architect@cityscender.com

PROJECT:
 NEW O'REILLY AUTO PARTS STORE
 U.S. HIGHWAY 11
 STRASBURG, VA
GRIDPOINT EMS

O'Reilly AUTO PARTS
 CORPORATE OFFICES
 238 SOUTH PATTERSON
 SPRINGFIELD, MISSOURI 65802
 (417) 862-2674 TELEPHONE

COMM # 4253
 DATE: 11-2-18
 REVISION DATE:

EM1.1

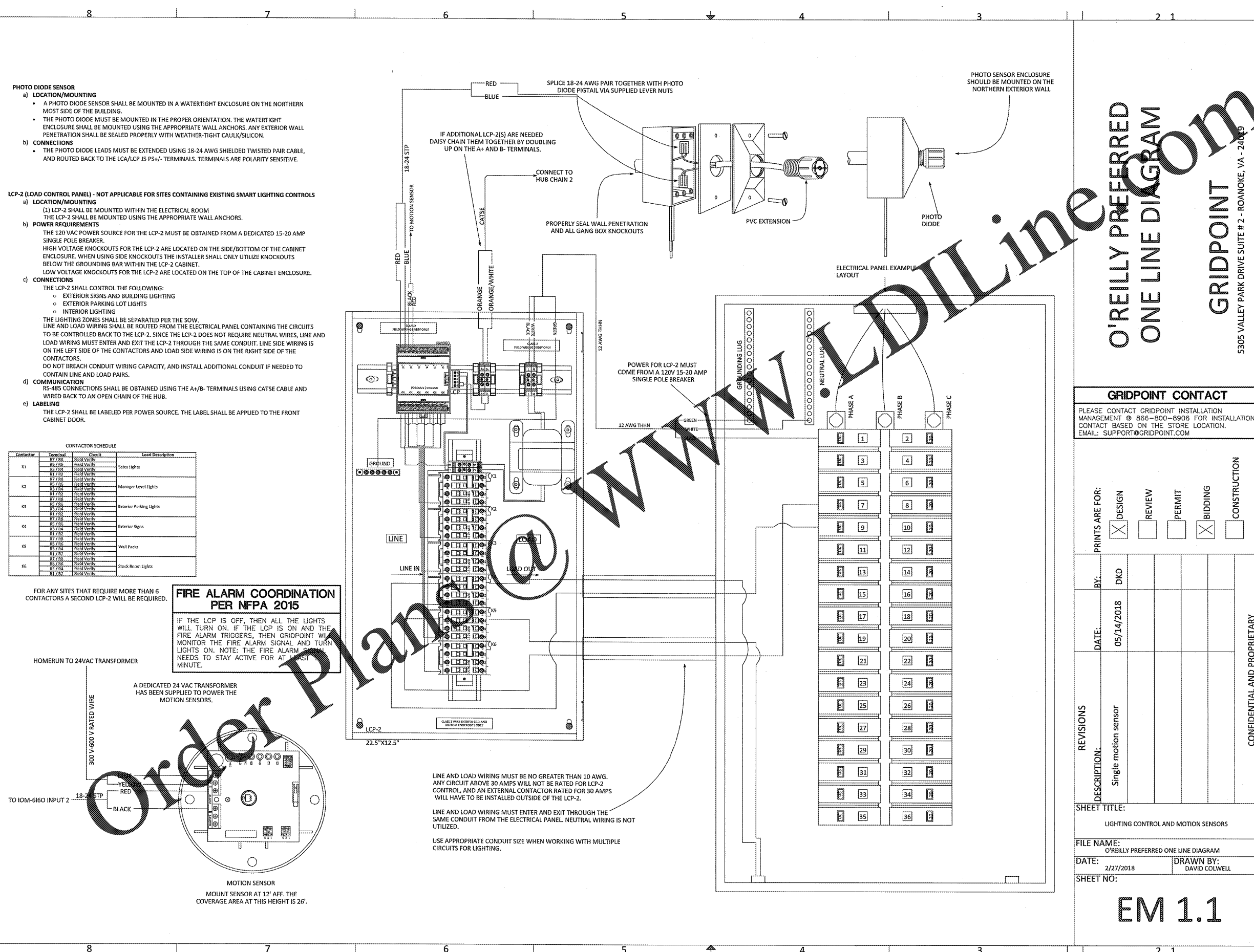


PHOTO DIODE SENSOR
 a) **LOCATION/MOUNTING**
 • A PHOTO DIODE SENSOR SHALL BE MOUNTED IN A WATERTIGHT ENCLOSURE ON THE NORTHERN MOST SIDE OF THE BUILDING.
 • THE PHOTO DIODE MUST BE MOUNTED IN THE PROPER ORIENTATION. THE WATERTIGHT ENCLOSURE SHALL BE MOUNTED USING THE APPROPRIATE WALL ANCHORS. ANY EXTERIOR WALL PENETRATION SHALL BE SEALED PROPERLY WITH WEATHER-TIGHT CAULK/SILICON.
 b) **CONNECTIONS**
 • THE PHOTO DIODE LEADS MUST BE EXTENDED USING 18-24 AWG SHIELDED TWISTED PAIR CABLE, AND ROUTED BACK TO THE LCA/LCP 15 PS+/- TERMINALS. TERMINALS ARE POLARITY SENSITIVE.

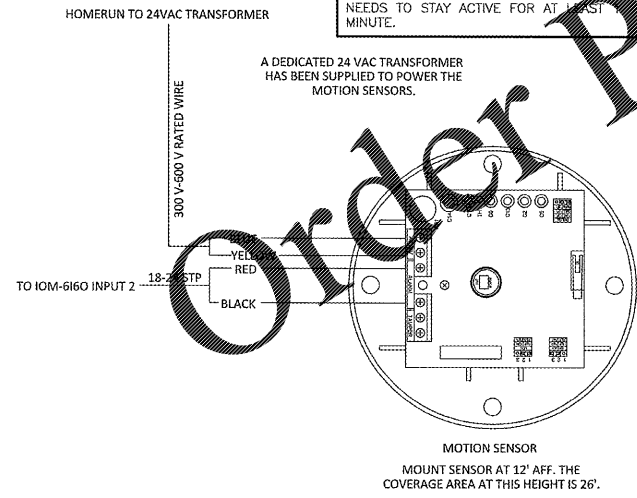
LCP-2 (LOAD CONTROL PANEL) - NOT APPLICABLE FOR SITES CONTAINING EXISTING SMART LIGHTING CONTROLS
 a) **LOCATION/MOUNTING**
 (1) LCP-2 SHALL BE MOUNTED WITHIN THE ELECTRICAL ROOM
 THE LCP-2 SHALL BE MOUNTED USING THE APPROPRIATE WALL ANCHORS.
 b) **POWER REQUIREMENTS**
 THE 120 VAC POWER SOURCE FOR THE LCP-2 MUST BE OBTAINED FROM A DEDICATED 15-20 AMP SINGLE POLE BREAKER.
 HIGH VOLTAGE KNOCKOUTS FOR THE LCP-2 ARE LOCATED ON THE SIDE/BOTTOM OF THE CABINET ENCLOSURE. WHEN USING SIDE KNOCKOUTS THE INSTALLER SHALL ONLY UTILIZE KNOCKOUTS BELOW THE GROUNDING BAR WITHIN THE LCP-2 CABINET.
 LOW VOLTAGE KNOCKOUTS FOR THE LCP-2 ARE LOCATED ON THE TOP OF THE CABINET ENCLOSURE.
 c) **CONNECTIONS**
 THE LCP-2 SHALL CONTROL THE FOLLOWING:
 • EXTERIOR SIGNS AND BUILDING LIGHTING
 • EXTERIOR PARKING LOT LIGHTS
 • INTERIOR LIGHTING
 THE LIGHTING ZONES SHALL BE SEPARATED PER THE SOW.
 LINE AND LOAD WIRING SHALL BE ROUTED FROM THE ELECTRICAL PANEL CONTAINING THE CIRCUITS TO BE CONTROLLED BACK TO THE LCP-2. SINCE THE LCP-2 DOES NOT REQUIRE NEUTRAL WIRES, LINE AND LOAD WIRING MUST ENTER AND EXIT THE LCP-2 THROUGH THE SAME CONDUIT. LINE SIDE WIRING IS ON THE LEFT SIDE OF THE CONTACTORS AND LOAD SIDE WIRING IS ON THE RIGHT SIDE OF THE CONTACTORS.
 DO NOT BREACH CONDUIT WIRING CAPACITY, AND INSTALL ADDITIONAL CONDUIT IF NEEDED TO CONTAIN LINE AND LOAD PAIRS.
 d) **COMMUNICATION**
 RS-485 CONNECTIONS SHALL BE OBTAINED USING THE A+/B- TERMINALS USING CAT5E CABLE AND WIRED BACK TO AN OPEN CHAIN OF THE HUB.
 e) **LABELING**
 THE LCP-2 SHALL BE LABELED PER POWER SOURCE. THE LABEL SHALL BE APPLIED TO THE FRONT CABINET DOOR.

CONTACTOR SCHEDULE

Contactor	Terminal	Circuit	Load Description
K1	87/88	Hand Verry	Sales Lights
	89/90	Hand Verry	
	91/92	Hand Verry	
K2	87/88	Hand Verry	Manager Level Lights
	89/90	Hand Verry	
	91/92	Hand Verry	
K3	87/88	Hand Verry	Exterior Parking Lights
	89/90	Hand Verry	
	91/92	Hand Verry	
K4	87/88	Hand Verry	Exterior Signs
	89/90	Hand Verry	
	91/92	Hand Verry	
K5	87/88	Hand Verry	Wall Packs
	89/90	Hand Verry	
	91/92	Hand Verry	
K6	87/88	Hand Verry	Stack Room Lights
	89/90	Hand Verry	
	91/92	Hand Verry	

FOR ANY SITES THAT REQUIRE MORE THAN 6 CONTACTORS A SECOND LCP-2 WILL BE REQUIRED.

FIRE ALARM COORDINATION PER NFPA 2015
 IF THE LCP IS OFF, THEN ALL THE LIGHTS WILL TURN ON. IF THE LCP IS ON AND THE FIRE ALARM TRIGGERS, THEN GRIDPOINT WILL MONITOR THE FIRE ALARM SIGNAL AND TURN LIGHTS ON. NOTE: THE FIRE ALARM SIGNAL NEEDS TO STAY ACTIVE FOR AT LEAST ONE MINUTE.



LINE AND LOAD WIRING MUST BE NO GREATER THAN 10 AWG. ANY CIRCUIT ABOVE 30 AMPS WILL NOT BE RATED FOR LCP-2 CONTROL, AND AN EXTERNAL CONTACTOR RATED FOR 30 AMPS WILL HAVE TO BE INSTALLED OUTSIDE OF THE LCP-2.

LINE AND LOAD WIRING MUST ENTER AND EXIT THROUGH THE SAME CONDUIT FROM THE ELECTRICAL PANEL. NEUTRAL WIRING IS NOT UTILIZED.

USE APPROPRIATE CONDUIT SIZE WHEN WORKING WITH MULTIPLE CIRCUITS FOR LIGHTING.

O'REILLY PREFERRED ONE LINE DIAGRAM
GRIDPOINT
 5305 VALLEY PARK DRIVE SUITE # 2 - ROANOKE, VA - 24019

GRIDPOINT CONTACT
 PLEASE CONTACT GRIDPOINT INSTALLATION MANAGEMENT @ 866-800-8906 FOR INSTALLATION CONTACT BASED ON THE STORE LOCATION. EMAIL: SUPPORT@GRIDPOINT.COM

PRINTS ARE FOR:

DESIGN	REVIEW	PERMIT	BIDDING	CONSTRUCTION
<input checked="" type="checkbox"/>	<input type="checkbox"/>	<input type="checkbox"/>	<input checked="" type="checkbox"/>	<input type="checkbox"/>

DATE: 05/14/2018 BY: DKD

REVISIONS

DESCRIPTION	DATE	BY
Single motion sensor	05/14/2018	DKD

SHEET TITLE:
 LIGHTING CONTROL AND MOTION SENSORS

FILE NAME:
 O'REILLY PREFERRED ONE LINE DIAGRAM

DATE: 2/27/2018 DRAWN BY: DAVID COLWELL

SHEET NO:

EM 1.1