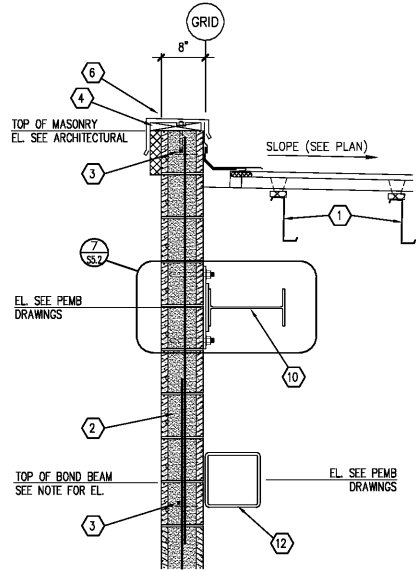
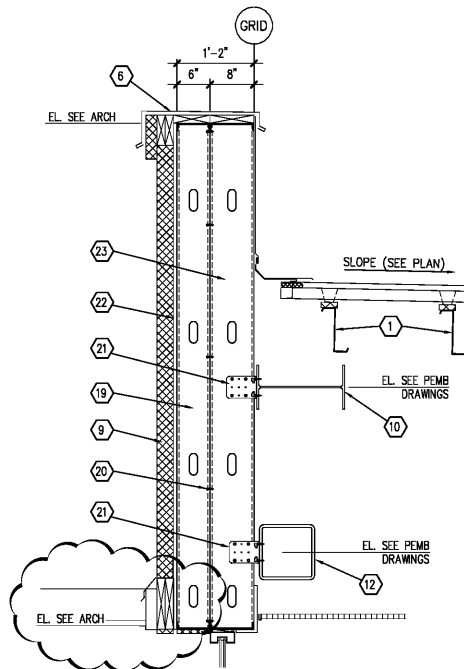


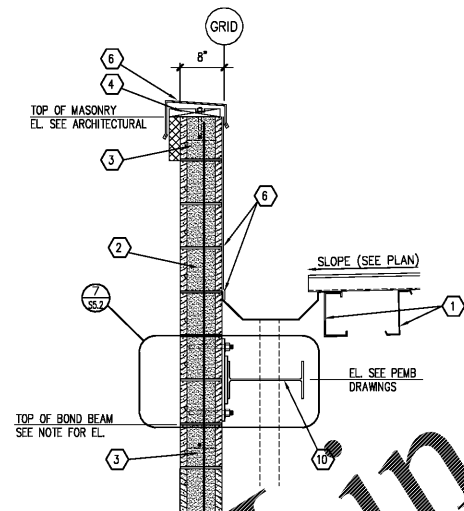
1 SECTION
S5.2 SCALE: 3/4" = 1'-0"



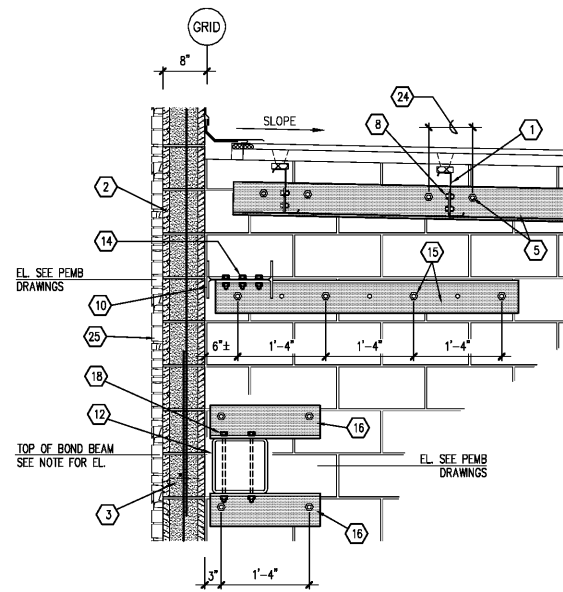
2 SECTION
S5.2 SCALE: 3/4" = 1'-0"



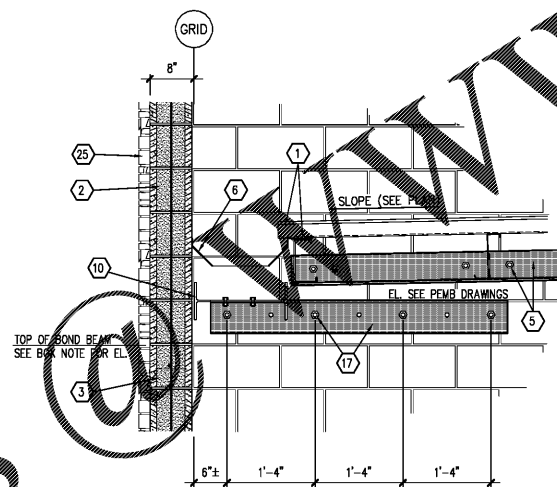
3 SECTION
S5.2 SCALE: 3/4" = 1'-0"



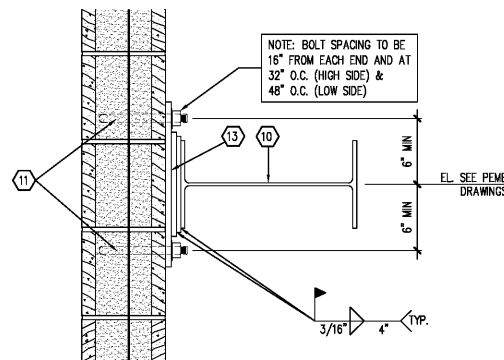
4 SECTION
S5.2 SCALE: 3/4" = 1'-0"



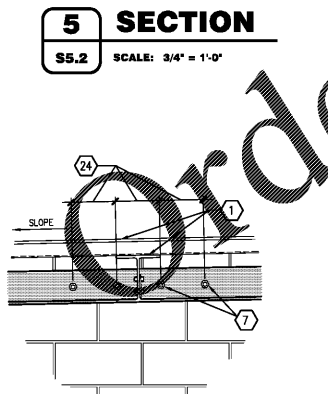
5 SECTION
S5.2 SCALE: 3/4" = 1'-0"



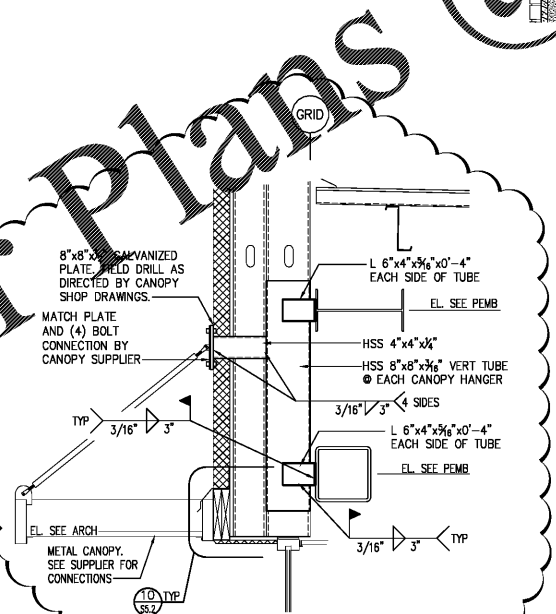
6 SECTION
S5.2 SCALE: 3/4" = 1'-0"



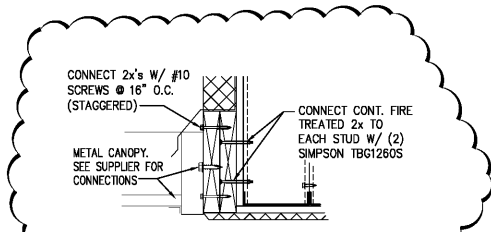
7 DETAIL
S5.2 SCALE: 1 1/2" = 1'-0"



8 DETAIL AT RTU's
S5.2 SCALE: 1 1/2" = 1'-0"



9 SECTION
S5.2 SCALE: 3/4" = 1'-0"



10 DETAIL
S5.2 SCALE: 1 1/2" = 1'-0"

KEYNOTES

- 1 PRE-ENGINEERED METAL BUILDING STRUCTURAL SYSTEM. SEE P.E.M.B. SHOP DRAWINGS FOR ADDITIONAL INFORMATION.
- 2 8" (NOM) SPLIT FACE OR SMOOTH FACE CMU. REFER TO CMU WALL NOTES ON SHEET S1 FOR WALL VERTICAL AND HORIZONTAL REINFORCEMENT
- 3 CONTINUOUS 8" (NOM) SMOOTH OR SPLIT FACE BOND BEAM W/ (1) #5 CONT.
- 4 CONTINUOUS FIRE TREATED 2x NALER WITH 3/8" GALVANIZED ANCHOR BOLTS @ 32" O.C.
- 5 CONTINUOUS L 6"x4"x1/2" LEDGER ANGLE FURNISHED BY THE PRE-ENGINEERED METAL BUILDING SUPPLIER. ANCHOR TO WALL BY DRILLING 3/8"x0'-6 1/2" DEEP HOLES INTO MASONRY FOR 3/8"x0'-6 1/2" A36 ALL-THREAD ROD EACH SIDE OF PURLINS IN FULLY GROUTED CELLS. SEE SECTIONS 5/S5.2 & 6/S5.2 FOR TYPICAL ANCHOR SPACING. SEE 8/S5.2 FOR SPECIAL ANCHORAGE OF PURLINS SUPPORTING RTU's. ANCHOR TO ALSO BE LOCATED WITHIN 6" OF ANGLE ENDS. APPLY ADHESIVE AND INSTALL ANCHOR IN ACCORDANCE WITH ADHESIVE ANCHOR INSTALLATION NOTES, SHEET S1
- 6 REFER TO ARCHITECTURAL FOR ALL FINISH REQUIREMENTS
- 7 AT ROOF PURLINS SUPPORTING ROOF LOADS PROVIDE (4) 3/8"x0'-6 1/2" A36 ALL-THREAD RODS THROUGH FULLY GROUTED CELLS SPACED AS SHOWN. APPLY ADHESIVE AND INSTALL ANCHOR. REFER TO ADHESIVE ANCHOR INSTALLATION NOTES.
- 8 CONNECTION PLATE AND BOLTS BY PRE-ENGINEERED METAL BUILDING SUPPLIER
- 9 EXTERIOR INSULATION FINISH SYSTEM, REFER TO ARCHITECTURAL
- 10 PRE-ENGINEERED METAL BUILDING WIND BEAM. SEE P.E.M.B. SHOP DRAWINGS.
- 11 WIND BEAM TO WALL BY DRILLING 3/8"x0'-6 1/2" DEEP HOLES INTO MASONRY FOR (2) 3/8"x0'-6 1/2" A36 ALL-THREAD ROD IN FULLY GROUTED CELLS. APPLY ADHESIVE AND INSTALL ANCHOR. REFER TO ADHESIVE ANCHOR INSTALLATION NOTES.
- 12 PRE-ENGINEERED METAL BUILDING WIND BEAM. SEE P.E.M.B. SHOP DRAWINGS FOR REQUIRED LOCATIONS OF BEAM.
- 13 SPANDREL BEAM CONNECTION PLATE (BY PEMB) WITH CONTRACTOR PROVIDED SHIM PLATES TO MATCH GAP. FIELD WELD SHIMS AS SHOWN. SEE PEMB FOR ADDITIONAL INFORMATION.
- 14 BOLTS BY P.E.M.B. MANUFACTURER.
- 15 L 6"x4"x1/2" STRUT ANGLE FURNISHED BY THE PRE-ENGINEERED METAL BUILDING SUPPLIER. ANCHOR TO WALL BY DRILLING 3/8"x0'-6 1/2" DEEP HOLES INTO MASONRY FOR (4) 3/8"x0'-6 1/2" A36 ALL-THREAD RODS (AS SHOWN IN DETAIL 5/S5.2) IN FULLY GROUTED CELLS. ANCHORS SHALL NOT BE LOCATED WITHIN 1/2" OF ANY MASONRY HEAD JOINTS. ANCHOR SPACING MAY BE ADJUSTED 2"± TO AVOID HEAD JOINTS. APPLY ADHESIVE AND INSTALL ANCHOR. REFER TO ADHESIVE ANCHOR INSTALLATION NOTES. NOTE: CONTROL JOINTS MUST NOT BE LOCATED WITHIN 6" OF STRUT ANGLE.
- 16 L 6"x4"x1/2" ANGLE FURNISHED BY THE PRE-ENGINEERED METAL BUILDING SUPPLIER. ANCHOR TO WALL BY DRILLING 3/8"x0'-6 1/2" DEEP HOLES INTO MASONRY FOR (2) 3/8"x0'-6 1/2" A36 ALL-THREAD RODS IN FULLY GROUTED CELLS. ANCHORS SHALL NOT BE LOCATED WITHIN 1/2" OF ANY MASONRY HEAD JOINTS. ANCHOR SPACING MAY BE ADJUSTED 2"± TO AVOID HEAD JOINTS. APPLY ADHESIVE AND INSTALL ANCHOR. REFER TO ADHESIVE ANCHOR INSTALLATION NOTES. NOTE: CONTROL JOINTS MUST NOT BE LOCATED WITHIN 6" OF STRUT ANGLE.
- 17 L 6"x4"x1/2" STRUT ANGLE FURNISHED BY THE PRE-ENGINEERED METAL BUILDING SUPPLIER. ANCHOR TO WALL BY DRILLING 3/8"x0'-6 1/2" DEEP HOLES INTO MASONRY FOR (4) 3/8"x0'-6 1/2" A36 ALL-THREAD RODS (AS SHOWN IN DETAIL 5/S5.2) IN FULLY GROUTED CELLS. ANCHORS SHALL NOT BE LOCATED WITHIN 1/2" OF ANY MASONRY HEAD JOINTS. ANCHOR SPACING MAY BE ADJUSTED 2"± TO AVOID HEAD JOINTS. APPLY ADHESIVE AND INSTALL ANCHOR. REFER TO ADHESIVE ANCHOR INSTALLATION NOTES. NOTE: CONTROL JOINTS MUST NOT BE LOCATED WITHIN 6" OF STRUT ANGLE.
- 18 SEE PEMB DRAWINGS FOR CONNECTION OF HOLLOW TUBE WIND BEAM TO WALL ANGLES.
- 19 6"x16 ga. METAL STUDS (800S162-54) @ 24" O.C.
- 20 CONNECT STUDS TOGETHER WITH #12 SCREWS @ 24" O.C.
- 21 SIMPSON FC843.5 CONNECTOR W/ (6) #12-14 SCREWS TO STUDS AND (4) #12-24 10 MIN. 3/16" THICK STEEL
- 22 REFER TO ARCHITECTURAL DRAWINGS FOR EXTERIOR WALL SHEATHING. WALL SHEATHING SHALL BE ATTACHED TO EACH STUD AS PER SHEATHING MANUFACTURER'S REQUIREMENTS FOR WIND PRESSURES INDICATED ON SHEET S1. MINIMUM ATTACHMENT REQUIREMENT TO BE #8 CORROSION-RESISTANT (1" LONG) SCREWS @ 8" O.C. AT PERIMETER OF SHEETS AND AT 8" O.C. IN THE INTERIOR FIELD.
- 23 8"x16 ga. METAL STUDS (800S162-54) @ 24" O.C.
- 24 8"x1 (CENTERED UPON PURLIN) ANCHORS SHALL NOT BE LOCATED WITHIN 1/2" OF ANY MASONRY HEAD JOINTS. ANCHOR SPACING MAY BE ADJUSTED 2"± TO AVOID HEAD JOINTS
- 25 SEE ARCHITECTURAL FOR WALL FINISH

MASONRY NOTES

1. IN ALL CASES, THREADED ROD ANCHORS ARE TO BE INSTALLED IN GROUTED CELLS.
2. SOLIDLY GROUT ALL CELLS & COURSES FROM BOND BEAM AT ELEVATION 112'-0" TO TOP OF WALL.
3. FILL ALL CELLS FULL HEIGHT FROM SLAB TO PARAPET 4"-8" EACH DIRECTION FROM CORNER TO ALLOW FOR METAL BUILDING CONNECTIONS. SEE FRAMING PLAN SHEET S4 FOR MORE INFORMATION.
4. ANCHORS SHALL NOT BE LOCATED WITHIN 1/2" OF ANY MASONRY HEAD JOINTS. ANCHOR SPACING MAY BE ADJUSTED 2"± TO AVOID HEAD JOINTS.

Jeffrey S. Smith, P.E.
Jeffrey S. Smith P.E. 019070
1801 W 32nd St. Bldg B Ste 104 * JOPLIN, MISSOURI 64804
P.O. Box 8102 * JOPLIN, MISSOURI 64802
PHONE: 417-624-0444 * FAX: 417-624-0430



CRAIG A. SCHNEIDER, AIA
ARCHITECT
1736 Earl Sunshine, Suite 417
Springfield, Missouri 65804
e-mail: architect@cedtchitect.com
417.862.0558
417.862.3265

PROJECT:
NEW O'REILLY AUTO PARTS STORE
U.S. HIGHWAY 11
STRASBURG, VA

O'Reilly AUTO PARTS
CORPORATE OFFICES
235 SOUTH PATTERSON
SPRINGFIELD, MISSOURI 65802
(417) 862-2674 TELEPHONE

COMM # 4253
DATE: 11-2-18
REVISION DATE: 1-21-2020