

CRAIG A. SCHNEIDER, AIA
ARCHITECT
 1736 Earl Sunshine, Suite 417
 Springfield, Missouri 65804
 417.862.0558
 417.862.3265
 e-mail: architect@electrictelnet.com

PROJECT:
NEW O'REILLY AUTO PARTS STORE
U.S. HIGHWAY 11
STRASBURG, VA

O'Reilly AUTO PARTS
 CORPORATE OFFICES
 235 SOUTH PATTERSON
 SPRINGFIELD, MISSOURI 65802
 (417) 862-2674 TELEPHONE

COMM # 4253
 DATE: 11-2-18
 REVISION
 DATE: 1-21-2020

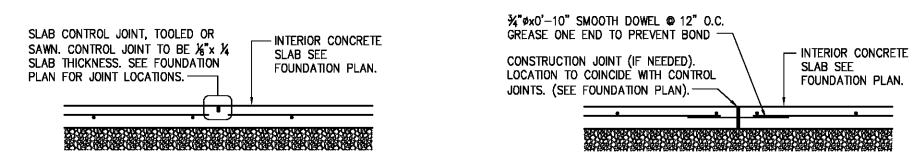
KEYNOTES

- 1 SLAB HARPIN. SEE DETAIL 9/S3.1
- 2 PROVIDE #4x4'-0" DOWEL TURN 45 DEGREES AT SLAB INSIDE CORNERS
- 3 CONTROL/CONSTRUCTION JOINT SEE DETAILS 1 & 2/S2
- 4 SIDEWALK: PROVIDE 4" THICK CONCRETE REINFORCED W/ #3'S @ 18" O.C. EACH WAY (PLACED AT MID-HEIGHT OF SLAB) OVER COMPACTED SUB-BASE MATERIAL (AS DIRECTED BY THE GEOTECHNICAL REPORT OR ON-SITE GEOTECHNICAL ENGINEER) PROPERLY PREPARED SUBGRADE. SEE CIVIL DRAWINGS FOR JOINT REQUIREMENTS, EXTENTS OF FLATWORK, AND TOP OF CONCRETE SPOT ELEVATIONS.
- 5 STEEL BOLLARD: SEE SITE DEVELOPMENT PLANS AND DETAILS. (WHERE APPLICABLE, ALIGN WITH CENTERLINE OF STOREFRONT MULLIONS AND JAMBS OF OVERHEAD DOOR.)
- 6 4"x4" (MIN.) DOORPAD: PROVIDE 4" THICK CONCRETE REINFORCED W/ #3'S @ 18" O.C. EACH WAY (PLACED AT MID-HEIGHT OF SLAB) OVER COMPACTED SUB-BASE MATERIAL (AS DIRECTED BY THE GEOTECHNICAL REPORT OR ON-SITE GEOTECHNICAL ENGINEER) ON PROPERLY PREPARED SUBGRADE. CENTER PAD ON DOOR. SEE CIVIL DRAWINGS FOR TOP OF CONCRETE SPOT ELEVATIONS.
- 7 6" WIDE DOORPAD: PROVIDE 4" THICK CONCRETE REINFORCED W/ #3'S @ 18" O.C. EACH WAY (PLACED AT MID-HEIGHT OF SLAB) OVER COMPACTED SUB-BASE MATERIAL (AS DIRECTED BY THE GEOTECHNICAL REPORT OR ON-SITE GEOTECHNICAL ENGINEER) ON PROPERLY PREPARED SUBGRADE. EXTEND CONCRETE 1'-6" PAST DOOR JAMBS. SEE CIVIL DRAWINGS FOR TOP OF CONCRETE SPOT ELEVATION.
- 8 ISOLATION JOINT. SEE DETAIL 3/S2
- 9 DETECTABLE WARNING SURFACE, REFER TO CIVIL DRAWINGS FOR ADDITIONAL INFORMATION
- 10 ENTRY SLAB: 8" THICK CONCRETE SLAB REINFORCED W/ #3'S @ 18" O.C. EACH WAY (PLACED AT MID-HEIGHT OF SLAB) OVER POLYETHYLENE VAPOR RETARDER OVER COMPACTED SUB-BASE MATERIAL (AS DIRECTED BY THE GEOTECHNICAL REPORT OR ON-SITE GEOTECHNICAL ENGINEER) OVER PROPERLY PREPARED SUB-GRADE. TOP OF SLAB = 100'-0"

FOUNDATION SCHEDULE

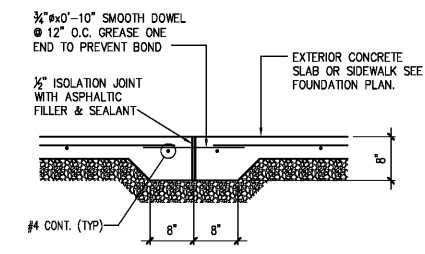
MARK	FOOTING SIZE (W x L)	FOOTING REINFORCEMENT		BOTTOM OF FOOTING ELEVATION	PILASTER REINFORCEMENT		TOP OF PILASTER ELEVATION	NOTES	MARK
		LONG.	TRANS.		VERT.	TIES			
F1	4'-6"x4'-6" @ 0"	(8) #4	(8) #4	97'-0"	(12) #6	SEE SECTION 2/S3.1	100'-0"	1,2,3,4,5	F1
F2	5'-6"x5'-6" @ 0"	(8) #4	(8) #4	97'-0"	(12) #6	SEE SECTION 6/S3.1	100'-0"	1,2,3,4,5	F2
F3	6'-0"x6'-0" @ 1'-6"	(8) #4 EACH WAY TOP & BOT.		96'-0"	(12) #6	SEE SECTION 6/S3.2	99'-4"	1,2,4,5	F3
F4	5'-6"x5'-6" @ 0"	(8) #4	(8) #4	97'-0"	(12) #6	SEE SECTION 6/S3.1 SIM.	100'-0"	1,2,3,4,5	F4

- NOTES:**
1. ALL ANCHOR BOLTS SHALL BE SIZE, QUANTITY AND SPACING AS SPECIFIED BY THE PRE-ENGINEERED METAL BUILDING MANUFACTURER. MAINTAIN 3" MINIMUM CONCRETE COVER AROUND BOLTS. TIES SHALL WRAP AROUND ANCHOR BOLTS.
 2. COLUMN BASE PLATES ARE TO REST ON TOP OF CONCRETE. PROVIDE LEVEL BEARING SURFACE FOR EVEN CONTACT.
 3. COLUMN FOOTING REINFORCEMENT TO BE INTEGRAL WITH CONTINUOUS FOUNDATION REINFORCEMENT.
 4. PROVIDE ANCHOR BOLT TEMPLATES AT COLUMN.
 5. ALL SPREAD FOOTINGS ARE TO BE CENTERED BENEATH COLUMNS UNLESS NOTED OTHERWISE.



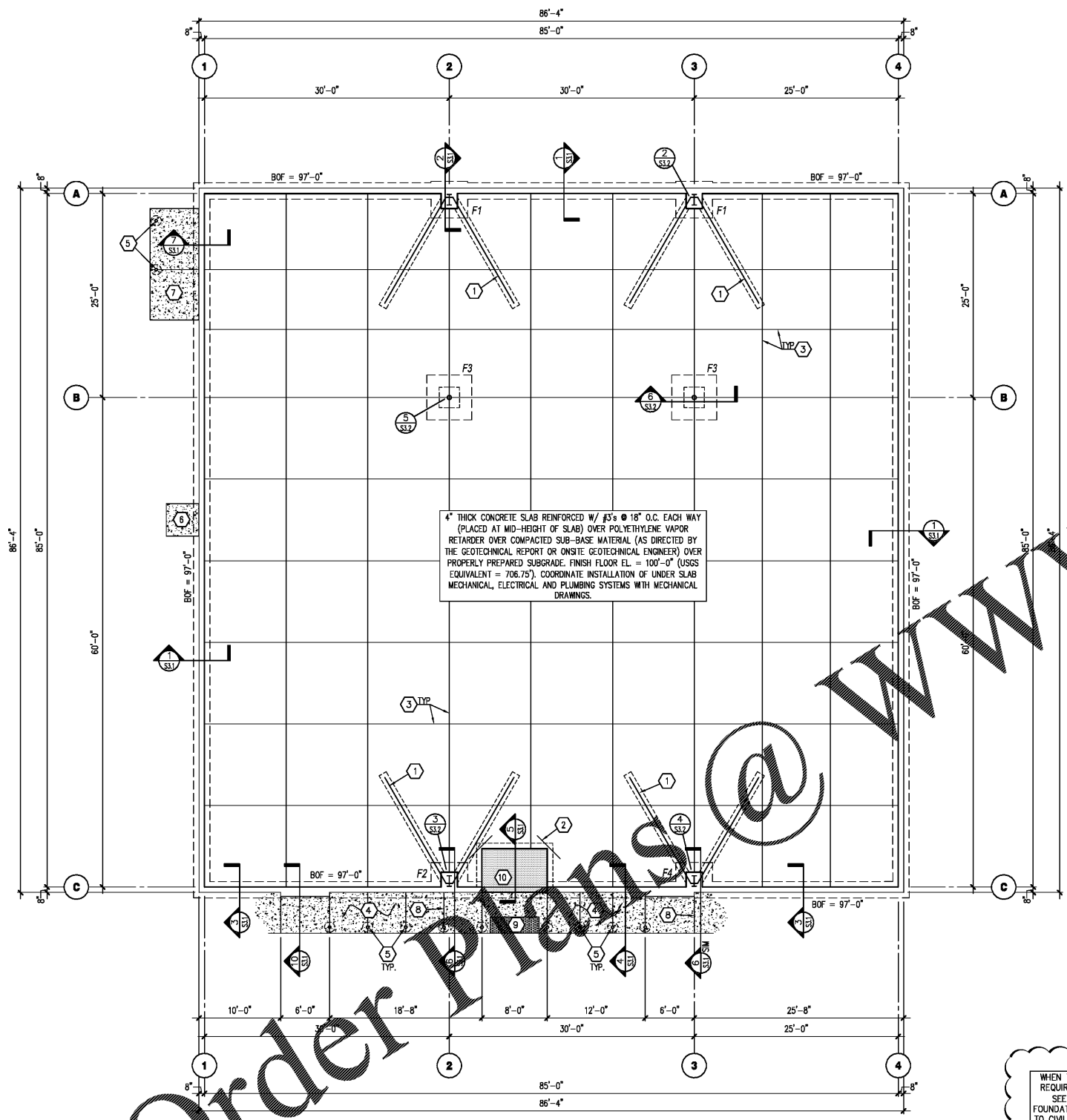
1 TYP. CONTROL JOINT DETAIL
 S2 SCALE: 3/4" = 1'-0"

2 TYP. CONSTR. JOINT DETAIL
 S2 SCALE: 3/4" = 1'-0"

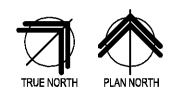


3 SIDEWALK ISOLATION JOINT
 S2 SCALE: 3/4" = 1'-0"

WHEN TRASH ENCLOSURE SCREEN WALL IS REQUIRED TO BE MASONRY CONSTRUCTION SEE SECTION 8/S3.2 FOR WALL AND FOUNDATION DETAILING REQUIREMENTS. REFER TO CIVIL DRAWINGS FOR PLAN LOCATION AND ALL OTHER CONSTRUCTION REQUIREMENTS.



FOUNDATION PLAN
 SCALE: 1/8" = 1'-0"



Order Plans @ WWW.ArchLine.com

Jeffrey S. Smith, P.E.
 Jeffrey S. Smith P.E. 019070
 1801 W 32nd St. Bldg B Ste 104 * JOPLIN, MISSOURI 64804
 P.O. Box 8102 * JOPLIN, MISSOURI 64802
 PHONE: 417-624-0444 * FAX: 417-624-0430