



CRAIG A. SCHNEIDER, AIA
ARCHITECT
 1736 East Sunshine, Suite 417
 Springfield, Missouri 65804
 417.862.0558
 Fax: 417.862.3265
 e-mail: architect@electricsignaller.com

PROJECT:
NEW O'REILLY AUTO PARTS STORE
U.S. HIGHWAY 11
STRASBURG, VA

O'Reilly AUTO PARTS
 CORPORATE OFFICES
 235 SOUTH PATTERSON
 SPRINGFIELD, MISSOURI 65802
 (417) 862-2674 TELEPHONE

COMM # 4253
 DATE: 11-2-18
 REVISION
 DATE: 6-20-19

S1.2

GENERAL NOTES

- A. REFER TO PROJECT MANUAL FOR ADDITIONAL REQUIREMENTS.
- B. CONTACT OWNER'S OR TENANT'S DESIGNATED PROJECT ADMINISTRATOR FOR QUESTIONS OR CLARIFICATIONS.
- C. SITE SIGN FOUNDATIONS AND ROUGH-IN ELECTRICAL TO BE PROVIDED BY CONTRACTOR.
- D. REQUIRED GOVERNMENTAL PERMITS FOR PERMANENT TYPE SIGNAGE TO BE PROVIDED BY OWNER OR OTHERS (N.I.C.).

DESIGN CRITERIA

- A. GOVERNING BUILDING CODE
 2012 VIRGINIA UNIFORM CONSTRUCTION CODE (2012 IBC)
- B. WIND CRITERIA:
 B.1. RISK CATEGORY
 B.2. $V_{ult} = 118$ mph
 B.3. $V_{min} = 89.9$ mph
 B.4. EXPOSURE
- C. SEISMIC CRITERIA:
 C.1. SITE CLASS = C
 C.2. $C = A$
 C.3. $S_1 = 0.055$
 C.4. $S_{MS} = 0.105$
 C.5. $S_{M1} = 0.053$

STRUCTURAL NOTES

- A. A GEOTECHNICAL ANALYSIS HAS BEEN PERFORMED ON THIS SITE. SEE PROJECT MANUAL FOR GEOTECHNICAL INFORMATION. APPROPRIATE RECOMMENDATIONS STATED IN THE GEOTECHNICAL REPORT ISSUED BY ECS MID-ATLANTIC, LLC DATED SEPT. 5, 2018 SHALL BE FOLLOWED.
- B. THESE FOUNDATIONS HAVE BEEN DESIGNED FOR A VERTICAL SOIL BEARING OF 2000 psf.
- C. BRACE POLE SIGN AGAINST LATERAL FORCES UNTIL CONCRETE HAS REACHED SPECIFIED COMPRESSIVE DESIGN STRENGTH.
- D. ALL READY MIX CONCRETE SHALL BE 4000 psi FOR ALL CONCRETE PLACEMENT. DO NOT ADD WATER TO THE MIX DESIGN AFTER DELIVERY TO THE PROJECT SITE.
- E. EXPOSED EXTERIOR CONCRETE SHALL BE AIR-ENTRAINED (TOTAL AIR CONTENT = 5%).
- F. HOT OR COLD WEATHER CONCRETING SHALL BE IN ACCORDANCE WITH ACI 305-89 AND ACI 306-1-90, RESPECTIVELY.
- G. ANY CONCRETE PLACED BY MEANS OF PUMPING SHALL BE DONE IN ACCORDANCE WITH ACI 304.2R (82).
- H. CEMENT SHALL CONFORM TO A.S.T.M. C-150 TYPE I/II.
- I. AGGREGATES SHALL CONFORM TO A.S.T.M. C-33 FOR NORMAL WEIGHT CONCRETE.
- J. READY MIX CONCRETE SHALL BE MIXED AND DELIVERED IN ACCORDANCE WITH A.S.T.M. C-94.
- K. ADMIXTURES MAY BE USED WITH THE APPROVAL OF THE STRUCTURAL ENGINEER. ADMIXTURES USED TO INCREASE THE WORKABILITY OF THE CONCRETE SHALL NOT BE CONSIDERED TO REDUCE THE CEMENT CONTENT. NO CALCIUM CHLORIDE ADMIXTURES ALLOWED.
- L. FABRICATOR QUALIFICATIONS: FABRICATOR MUST PARTICIPATE IN THE AISC QUALITY CONTROL PROGRAM AND BE DESIGNATED AN AISC-CERTIFIED PLANT.
- M. MATERIALS:
 • STRUCTURAL STEEL..... ASTM A992, GRADE 50ksi
 • PLATES, ANGLES, AND MISC STEEL..... ASTM A36ksi
 • ANCHOR RODS..... ASTM F1554, GRADE 36
 • HIGH STRENGTH BOLTS..... ASTM F3125
 • WELDING ELECTRODES..... AWS A5.1 (E70XX)
 • PIPE..... ASTM A53, GRADE B
 • ROUND HSS..... ASTM A500, GRADE B, $F_y = 42$ ksi

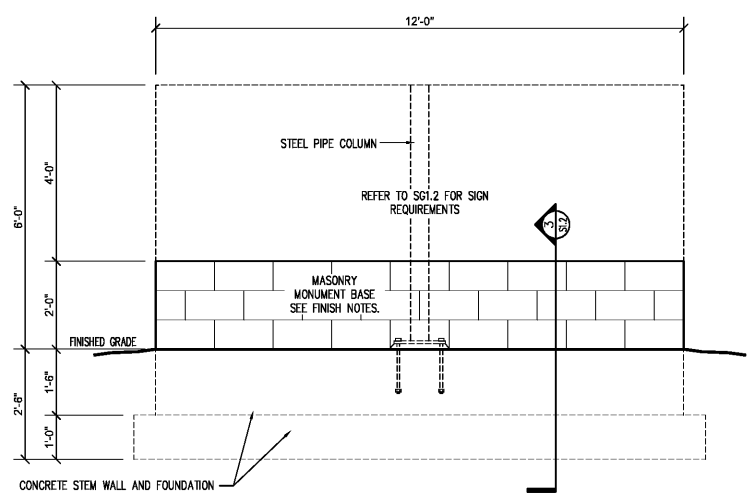
FINISH NOTES

- A. FIELD COLOR: EQUAL TO SOFTER TAN SW8141
- B. SHERWIN WILLIAMS PAINT
 • COAT S-W PREPRITE BLOCK FILLER B25W25 (NO LESS THAN 8 MILS)
 • COATS S-W CONPLEX XL SMOOTH ELASTOMERIC A5-400 (NO LESS THAN 5.7 MILS EACH COAT)
- C. COLD WEATHER APPLICATIONS (IF NEEDED):
 • COAT S-W LOXON BLOCK SURFACER (NO LESS THAN 8 MILS)
 • COATS S-W ULTRACRETE SOLVENT BORNE SMOOTH 846 (NO LESS THAN 8 MILS EACH COAT OR 16 MILS TOTAL)

CMU NOTES

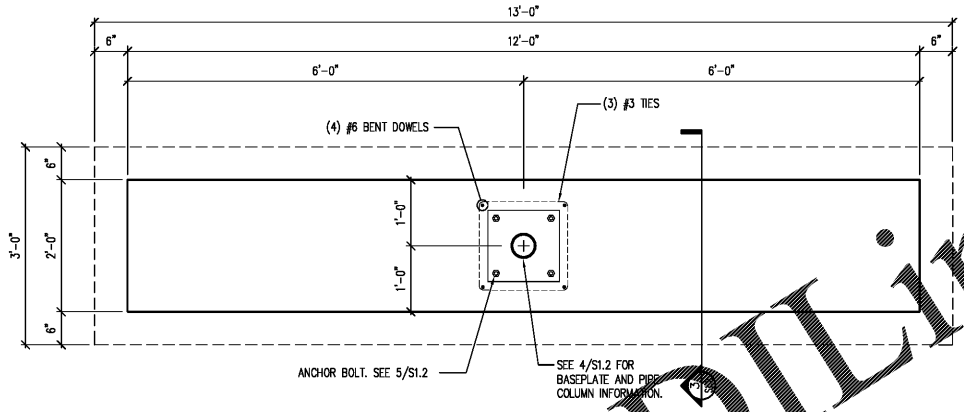
- A. CMU SHALL CONFORM TO CURRENT BUILDING CODE PROVISIONS.
- B. VERTICAL CELLS TO BE FILLED SHALL ALIGN TO MAINTAIN AN UNOBSTRUCTED VERTICAL SHAFT NOT LESS THAN 2"x3".
- C. PROVIDE 9 ga. LADDER TYPE JOINT REINFORCEMENT AT 16" O.C.
- D. CENTER VERTICAL REINFORCEMENT WITH 9 ga. HOT DIP GALVANIZED REBAR POSITIONERS 24" AT O.C.

NOTE:
 VERIFY LOCATION PRIOR TO POURING TO ASSURE NO INTERFERENCE WITH UTILITIES



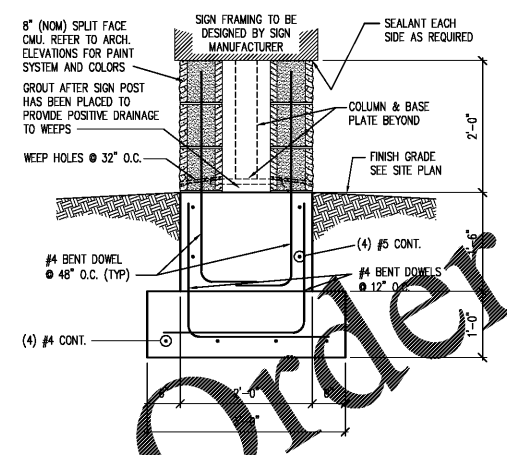
1 GROUND SIGN ELEVATION

S1.2 SCALE: 1/2" = 1'-0"



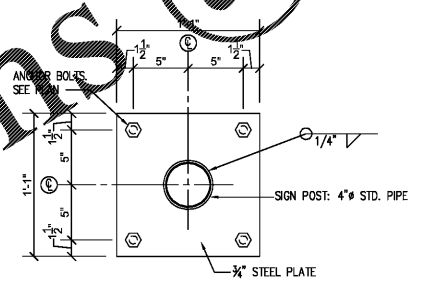
2 MONUMENT SIGN FOUNDATION PLAN

S1.2 SCALE: 3/4" = 1'-0"



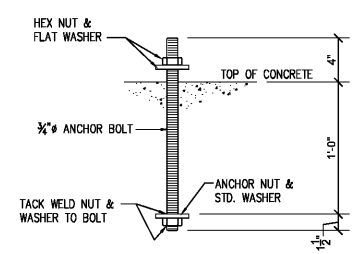
3 MONUMENT SIGN FOUNDATION SECTION

S1.2 SCALE: 3/4" = 1'-0"



4 SIGN BASE PLATE

S1.2 SCALE: 1 1/2" = 1'-0"



BOLT MATERIAL MAY BE F1554 GR. 36, OR CONTINUOUSLY THREADED A36 ROD. ALL ANCHOR BOLTS SHALL BE CLEAN AND FREE OF ALL OIL, GREASE, ICE, ETC.

5 ANCHOR BOLT DETAIL

S1.2 SCALE: 1 1/2" = 1'-0"



Jeffrey S. Smith, P.E.
 Jeffrey S. Smith P.E. 019070
 1801 W 32nd St. Bldg B Ste 104 * JOPLIN, MISSOURI 64804
 P.O. Box 8102 * JOPLIN, MISSOURI 64802
 PHONE: 417-624-0444 * FAX: 417-624-0430