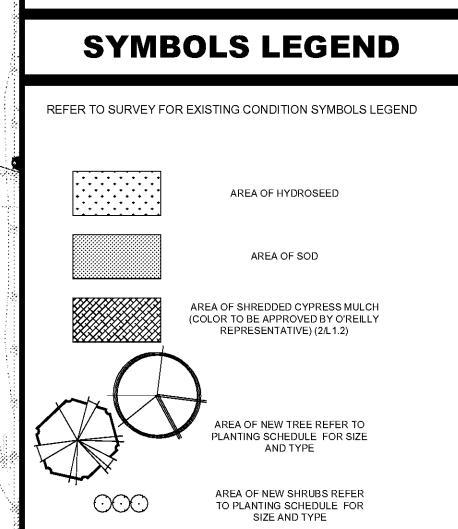


LANDSCAPE SCHEDULE					
KEY	QTY.	BOTANICAL NAME	COMMON NAME	CAL.	CONT.
SHADE TREES					
GTK	8	OLESTIA TRICANTHOS NERIS BIYOOLE	SHINE THORLESS HONEYLOCUST	2 1/2" CAL.	B+B
QPH	8	QUERCUS PHELLOS	WILD OAK	2 1/2" CAL. 13' H	B+B
ZS	7	ZELKOVA SERPATA	JAPANESE ELACHA	2 1/2" CAL. 13' H	B+B
SUBTOTAL:	23				
ORNAMENTAL TREES					
AL	5	AMELANCHIER ALBIS	ALLEGANY SERVICE BERRY	1 1/2" CAL. 18' H	B+B
MFB	2	WALLEN FLORINDA	JAPANESE F. ORNING CRABAPPLE	1 1/2" CAL. 18' H	B+B
SUBTOTAL:	7				
DECIDUOUS SHRUBS					
IV	16	ITEA VIRGINICA HENRY'S GARNET	GARNET SHEETSPIRE	24"	#1 CAN
SUBTOTAL:	16				
EVERGREEN SHRUBS					
IBS	42	LEX GLABRA SHAWROCK	SHAWROCK HEMLOCK	24"	#1 CAN
SUBTOTAL:	42				

- ### GENERAL NOTES
- REFER TO PROJECT MANUAL FOR ADDITIONAL REQUIREMENTS.
 - SITE CONDITIONS BASED UPON SURVEY PROVIDED BY OWNER. CONTRACTOR TO FIELD VERIFY EXISTING CONDITIONS BY DETAIL INSPECTION PRIOR TO SUBMITTING BID AND BEGINNING CONSTRUCTION. NOTIFY ARCHITECT IF EXISTING CONDITIONS DEVIATE SUBSTANTIALLY FROM THOSE INDICATED HEREIN.
 - REFER TO CIVIL DRAWINGS FOR ADDITIONAL REQUIREMENTS. COORDINATE WORK WITH OTHER SITE RELATED DEVELOPMENT DRAWINGS.
 - ALL PLANTING TYPES SHALL COMPLY WITH LOCAL GOVERNING CODES AND REGULATIONS. CONFORM TO REQUIREMENTS OF PLANT LIST AND TO THE AMERICAN ASSOCIATION OF NURSERYMEN "AMERICAN STANDARD OF NURSERY STOCK" AND "HORTICULTURAL STANDARDS" AS TO SPECIES, AGE, SIZE, AND PLANTING RECOMMENDATIONS.
 - NO MATERIAL SUBSTITUTIONS SHALL BE MADE WITHOUT THE ARCHITECT'S PRIOR WRITTEN APPROVAL. ALTERNATE MATERIALS OF SIMILAR SIZE AND CHARACTER MAY BE CONSIDERED IF SPECIFIED PLANT MATERIALS CANNOT BE OBTAINED.
 - PLANT LOCATION APPROXIMATE. ADJUST AS NECESSARY TO AVOID CONFLICTS.
 - QUANTITIES OF MATERIALS SHOWN ON LANDSCAPING PLAN TAKE PRECEDENCE OVER QUANTITIES SHOWN ON PLANTING SCHEDULE. CONTRACTOR SHALL BE RESPONSIBLE FOR VERIFYING ALL QUANTITIES ON LANDSCAPING PLAN.
 - PROVIDE 2" TOPSOIL AT ALL SOO, SEED AND PLANTING AREAS. GRADE SHALL BE ADJUSTED FOR SOO THICKNESS. REFER TO CIVIL SITE GRADING FOR SLOPE REQUIREMENTS.
 - WHEN CLAY SOIL IS ENCOUNTERED IN THE ESTABLISHED OF THE LAWN OR THE INSTALLATION OF PLANT MATERIAL IT SHALL BE IMPROVED IN ACCORDANCE WITH STANDARD TRADE PRACTICE.
 - RE-ESTABLISH TURF IN AREAS DISTURBED BY GRADING OR UTILITY TRENCHING IN THE RIGHT-OF-WAY.
 - PRIOR TO INSTALLATION, GENERAL CONTRACTOR TO CONFIRM THAT LIGHT POLES, LANDSCAPING AND UTILITIES DO NOT CONFLICT WITH SIGN LOCATION SHOWN. IF ANY POTENTIAL CONFLICT IS DISCOVERED, GENERAL CONTRACTOR IS TO CONTACT OWNER'S REPRESENTATIVE BEFORE PROCEEDING WITH THE WORK.

- ### KEY NOTES
- AREA OF HYDROSEED AND STRAW. UNLESS NOTED OTHERWISE, ALL AREAS DISTURBED BY CONSTRUCTION ARE FIRST TO BE FINE GRADED AND THEN FOLLOWED BY HYDROSEED AND STRAW OVER MIN. 4" TOPSOIL STOCKPILED FROM SITE OR HAULED IN AS REQUIRED.
 - AREA OF SOD
 - CYPRESS MULCH, REFER TO DETAIL 2L1.2.
 - LANDSCAPE EDGING, PROVIDE AT ALL GROUND COVER TYPE TRANSITIONS.



- ### PLAN REFERENCES
- REFER TO LANDSCAPE NOTES AND DETAILS SHEET FOR LANDSCAPE NOTES
 - THIS PLAN TO BE UTILIZED FOR SITE LANDSCAPE PURPOSES ONLY

PROJECT No. V183204 SCALE: 1"=20'
 DRAWN BY / CHECKED BY: DSH/JUR CAD I.D.: SS2

BOHLER ENGINEERING
 28 BLACKWELL PARK LANE, SUITE 201 WARRENTON, VA 21158
 PHONE: (840) 348-5501 FAX: (840) 348-0321

COMM # 4253
 DATE: 11-2-18
 REVISION DATE: 3-8-19
 6-20-19
 9-27-19

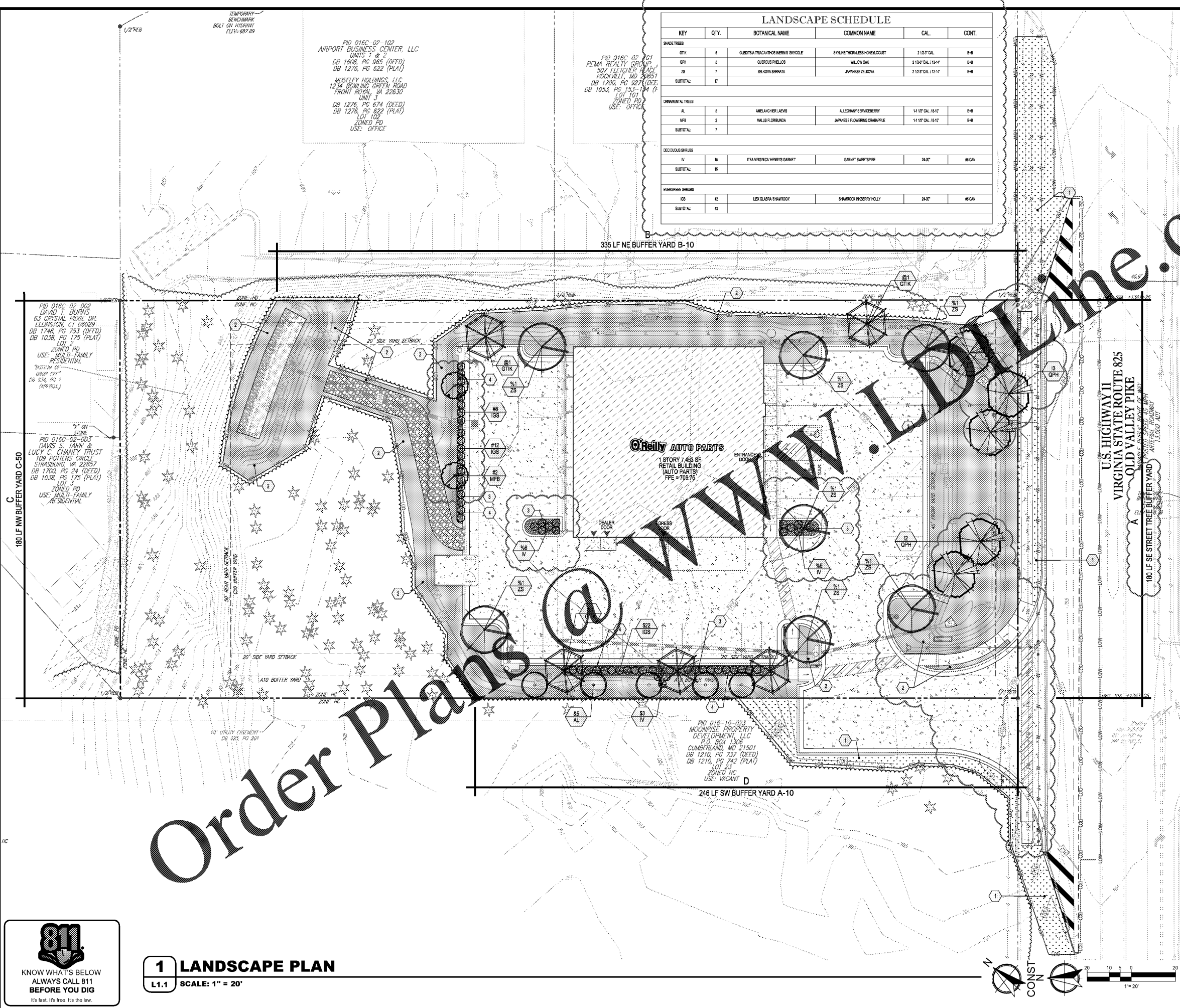
CRAIG A. SCHNEIDER, AIA
ARCHITECT
 1736 East Sunshine, Suite 417
 Springfield, Missouri 65804
 417-862-6558
 Fax: 417-862-9265
 e-mail: architect@estertyschneider.com

PROJECT:
NEW O'REILLY AUTO PARTS STORE
U.S. HIGHWAY 11
STRASBURG, VA
LANDSCAPE PLAN

O'Reilly AUTO PARTS
 CORPORATE OFFICES
 233 SOUTH PATTERSON
 SPRINGFIELD, MISSOURI 65802
 (417) 862-2674 TELEPHONE

Order Plans @ www.landscape.com

1 LANDSCAPE PLAN
L1.1 SCALE: 1" = 20'



\\NVS132\DRAWING\PLAN\SETBACK\PLAN DOCUMENT\1108471.DWG PRINTED BY: MGRSON 9/27/19 @ 4:01 PM. LAST SAVED BY: ESHOFFIELD