

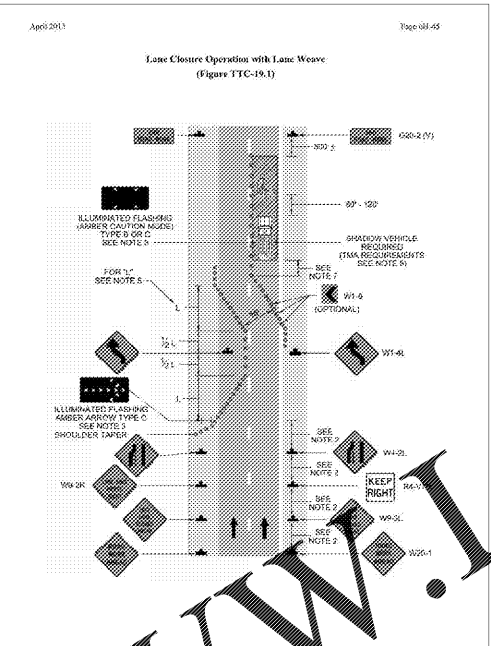
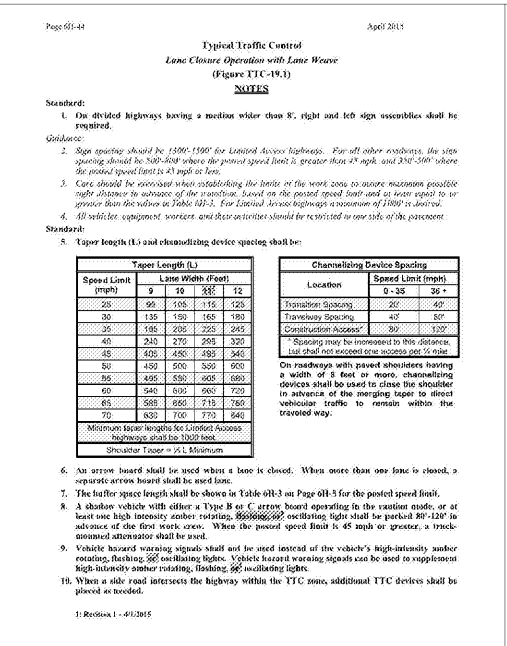
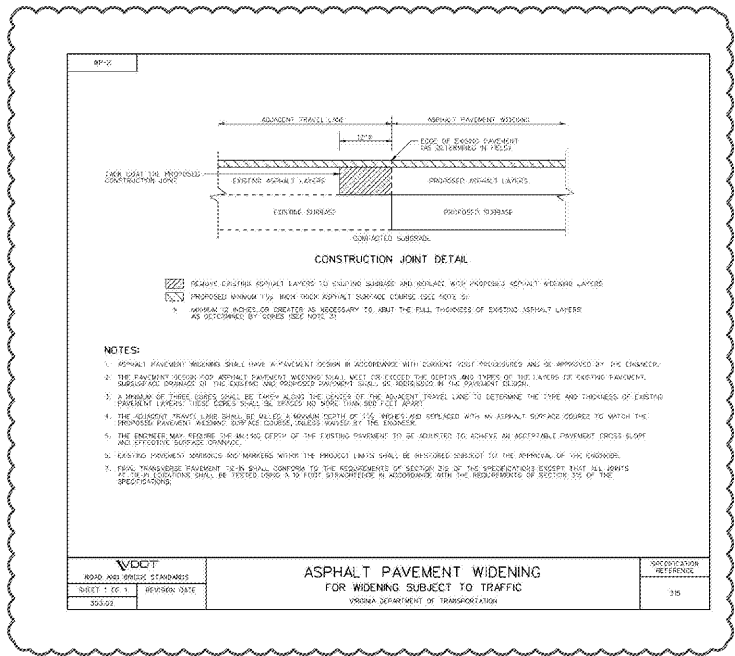
CRAIG A. SCHNEIDER, AIA
ARCHITECT
 1736 East Sunshine, Suite 417
 Springfield, Missouri 65804
 417-862-8558
 Fax: 417-862-3265
 e-mail: architect@easttyschneider.com

PROJECT:
NEW O'REILLY AUTO PARTS STORE
U.S. HIGHWAY 11
STRASBURG, VA
MAINTENANCE OF TRAFFIC

O'Reilly
AUTO PARTS
 CORPORATE OFFICES
 233 SOUTH PATTERSON
 SPRINGFIELD, MISSOURI 65802
 (417) 862-2674 TELEPHONE

COMM # 4253
 DATE: 3-8-19
 REVISION
 DATE: 6-20-19
 11-20-19

C6.1



Page 08-44 April 2015

Table 611-2, Taper Length (L)

Posted Speed Limit (mph)	9	10	11	12	Remarks
25	50	100	115	125	L = S ² /W(60)
30	135	150	165	180	
35	185	205	225	245	
40	240	270	295	320	
45	300	330	360	390	L = SW
50	360	405	450	500	
55	420	465	510	560	
60	480	525	570	620	
65	540	585	630	680	
70	600	645	690	740	
75	660	705	750	800	
80	720	765	810	860	
85	780	825	870	920	
90	840	885	930	980	
95	900	945	990	1040	
100	960	1005	1050	1100	

Limited Access Highway taper length (L) shall be 1000 feet. Taper length (L) shall be the posted speed limit. SW=L is desired for the shifting taper length (V.L. Minimum).

Table 611-3, Length of Lane Closure (L) for Speed Limit

Posted Speed Limit (mph)	Distance (feet)
20	115 - 125
25	135 - 150
30	185 - 205
35	240 - 270
40	300 - 330
45	360 - 390
50	420 - 450
55	480 - 510
60	540 - 570
65	600 - 630
70	660 - 690
75	720 - 750
80	780 - 810
85	840 - 870
90	900 - 930
95	960 - 990
100	1020 - 1050

1: Revision 1 - 04/2015

Page 08-45 April 2015

Table 611-4, Channelizing Device Spacing

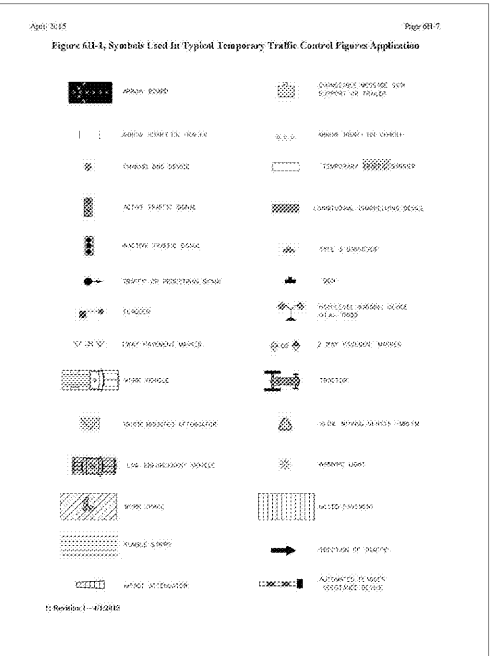
Location	Posted Speed Limit (mph)
Transition Spacing	0-35
Travelway Spacing	40
Construction Access	80
Construction Access*	120*

* For limited access by construction vehicles into the work area, spacing of devices may be increased to this distance, but shall not exceed one access per 0.25 mile unless approved by the engineer and documented.

Table 611-5, Recommended Spacing of Shrinker Taper Spacing

Road Type	Spacing (Feet)
Urban street with 25 mph or less posted speed	100 - 200
Urban street with 30 to 40 mph posted speed	250 - 350
45 mph Urban Roadways with 45 mph or less posted speed	300 - 500
All Other Roadways with greater than 45 mph posted speed	500 - 800
Limited Access Highway	1000 - 1500

* Urban streets with greater than 40 mph posted speed limit fall into this category.
 Note: For urban conditions, it is generally better to place advanced warning signs with a one block area within spacing out the signs over several blocks, however, vehicles must have time to recognize and react to each warning sign (see Section 601.1).



BOHLER ENGINEERING
 28 BLACKWELL PARK LANE, SUITE 201 WARRENTON, VA 22188
 PHONE: (540) 348-4500 FAX: (540) 348-0321

PROJECT No. V183204 SCALE: NOT TO SCALE
 DRAWN BY / CHECKED BY: DSH/JOR CAD: I.D. S02

WWW.LDILine.com

Order Plans @