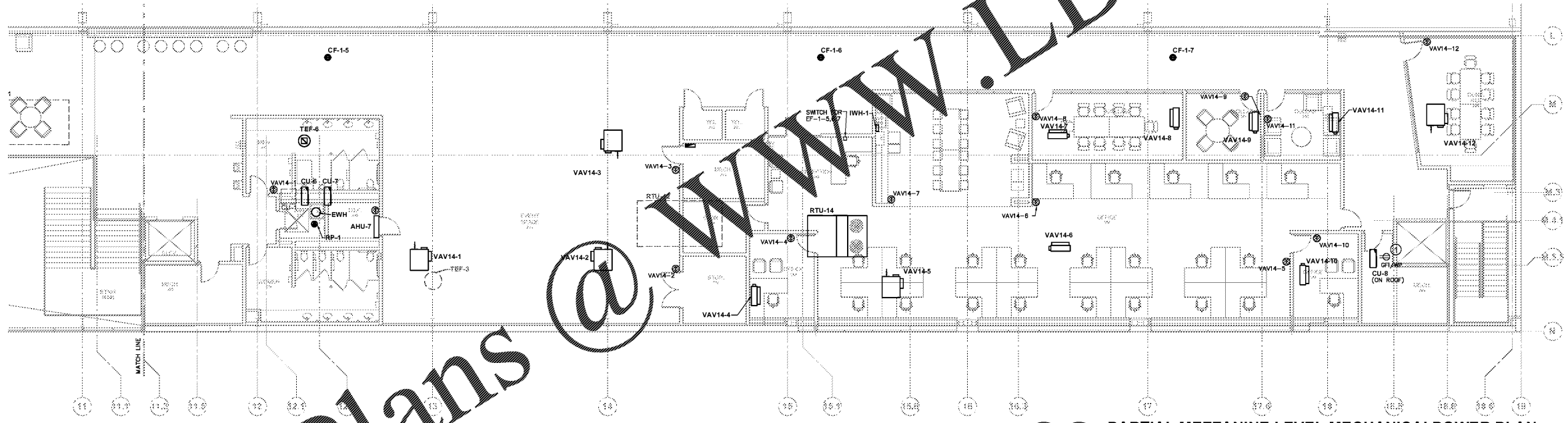


3 PARTIAL MEZZANINE LEVEL MECHANICAL POWER PLAN
SCALE: 1/8" = 1'-0"



2 PARTIAL MEZZANINE LEVEL MECHANICAL POWER PLAN
SCALE: 1/8" = 1'-0"

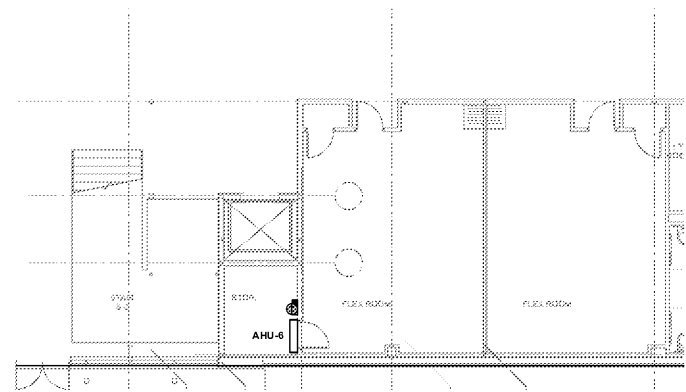
Order Plans @ WWW.LDOnline.com

KEY NOTES

① RECEPTACLE LOCATED ON MECHANICAL ROOFTOP EQUIPMENT, AVOID ACCESS PANELS AND LOUVERS.

GENERAL MECHANICAL POWER NOTE

REFER TO SHEET E501, MECHANICAL EQUIPMENT-ELECTRICAL SCHEDULE, FOR POWER REQUIREMENTS TO ALL MECHANICAL EQUIPMENT / MOTORIZED DAMPERS INDICATED ON THIS SHEET.



1 PARTIAL FIRST LEVEL MECHANICAL POWER PLAN
SCALE: 1/8" = 1'-0"



3371 Peachtree Rd. NE, Suite 400
Atlanta, Georgia 30326
404.477.2341

PROMUS
SCOTT MERIWETHER, P.E.
GEORGIA LICENSE #10780
4345 LAND RD
BALL GROUND, GA 30007
PROJECT MANAGER: SCOTT MERIWETHER
PHONE: 478.346.5163

LP Indoor Pavilion, LLC
Managed by LakePoint Land, LLC

755 Highway 293
Emerson, GA 30137



RENOVATIONS TO
LAKEPOINT SPORTS
PAVILION
MEZZANINE
755 Highway 293
Emerson, GA 30137

PROJECT NUMBER
19016.00



THIS DRAWING IS THE EXCLUSIVE PROPERTY OF THE ARCHITECTS AND MAY NOT BE REPRODUCED OR TRANSMITTED IN ANY FORM OR BY ANY MEANS, ELECTRONIC OR MECHANICAL, WITHOUT THE WRITTEN AUTHORIZATION AND PERMISSION.

COPYRIGHT ©2017 COLLINS COOPER CARUSI ARCHITECTS, INC.

2024 CONSTRUCTION DOCUMENTS 11.15.20

351510 FOR RFP 01.15.20

NOTE: READ THE SPECIFICATIONS
THIS SET OF DRAWINGS AND SPECIFICATIONS DEFINE THE PROJECT SCOPE AND CONTRACT REQUIREMENTS. INDIVIDUAL SHEETS SEPARATED FROM THIS SET MAY NOT ADEQUATELY REFLECT ALL INFORMATION NEEDED TO FULLY COVER CERTAIN ITEMS. DO NOT SEPARATE THIS SET OF DRAWINGS INTO INDIVIDUAL SHEETS.

SHEET TITLE
PROPOSED MEZZANINE
LEVEL MECHANICAL POWER
PLANS

E-401