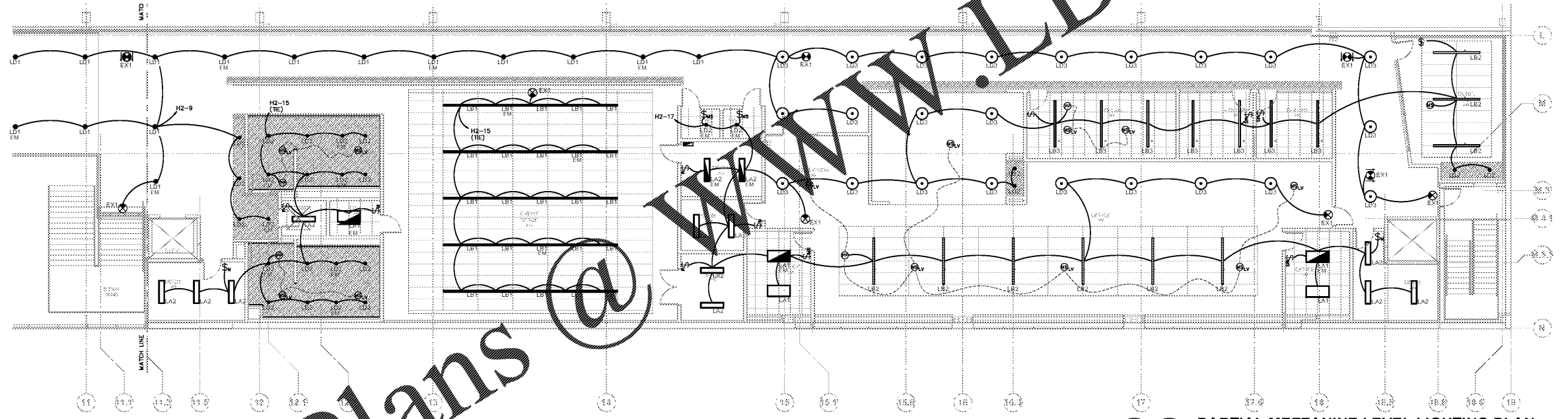
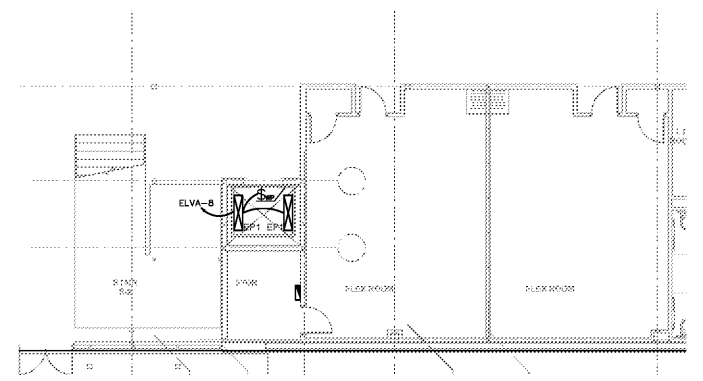


**PARTIAL MEZZANINE LEVEL LIGHTING PLAN**  
 E-200 SCALE: 1/8" = 1'-0"



**PARTIAL MEZZANINE LEVEL LIGHTING PLAN**  
 E-201 SCALE: 1/8" = 1'-0"



**PARTIAL FIRST LEVEL LIGHTING PLAN**  
 E-201 SCALE: 1/8" = 1'-0"

Order Plans @



3371 Peachtree Rd NE, Suite 400  
 Atlanta, Georgia 30326  
 404.973.0801

**PROMUS**  
 SCOTT MERIWETHER, P.E.  
 GEORGIA LICENSE #10780  
 4245 LAND RD  
 BALL GROUND, GA 30107  
 PROJECT MANAGER: SCOTT MERIWETHER  
 PHONE: 478.346.5103

LP Indoor Pavilion, LLC  
 Managed by LakePoint Land, LLC

755 Highway 293  
 Emerson, GA 30137



**RENOVATIONS TO LAKEPOINT SPORTS PAVILION MEZZANINE**  
 755 Highway 293  
 Emerson, GA 30137

PROJECT NUMBER  
 19016.00



THIS DRAWING IS THE EXCLUSIVE PROPERTY OF THE ARCHITECTS AND MAY NOT BE REPRODUCED OR USED WITHOUT THEIR WRITTEN AUTHORIZATION AND PERMISSION.

COPYRIGHT © 2017 COLLINS COOPER CARUSI ARCHITECTS, INC.

100% CONSTRUCTION DOCUMENTS 11.15.19

© 2019 FOR E-P 01.15.20

NOTE: READ THE SPECIFICATIONS  
 THIS SET OF DRAWINGS AND SPECIFICATIONS DEFINE THE PROJECT SCOPE AND CONTRACT REQUIREMENTS. INDIVIDUAL SHEETS SEPARATED FROM THE SET MAY NOT ADEQUATELY REFLECT ALL INFORMATION NEEDED TO SUITABLY COVER CERTAIN ITEMS. DO NOT SEPARATE THIS SET OF DRAWINGS INTO INDIVIDUAL SHEETS.

SHEET TITLE  
 PROPOSED MEZZANINE LEVEL LIGHTING PLANS

**E-201**