



3371 Peachtree Rd NE, Suite 400
Atlanta, Georgia 30326
404.477.0001

PROMUS
SCOTT MERIWETHER, P.E.
GEORGIA LICENSE #10780
4245 LAND RD
BALL GROUND, GA 30107
PROJECT MANAGER: SCOTT MERIWETHER
PHONE: 478.346.5103

LP Indoor Pavilion, LLC
Managed by LakePoint Land, LLC

755 Highway 293
Emerson, GA 30137



RENOVATIONS TO LAKEPOINT SPORTS PAVILION MEZZANINE
755 Highway 293
Emerson, GA 30137

PROJECT NUMBER
19016.00



THIS DRAWING IS THE EXCLUSIVE PROPERTY OF THE ARCHITECTS AND MAY NOT BE REPRODUCED OR USED WITHOUT THEIR WRITTEN AUTHORIZATION AND PERMISSION.

COPYRIGHT ©2017 COLLINS COOPER CARUSI ARCHITECTS, INC.

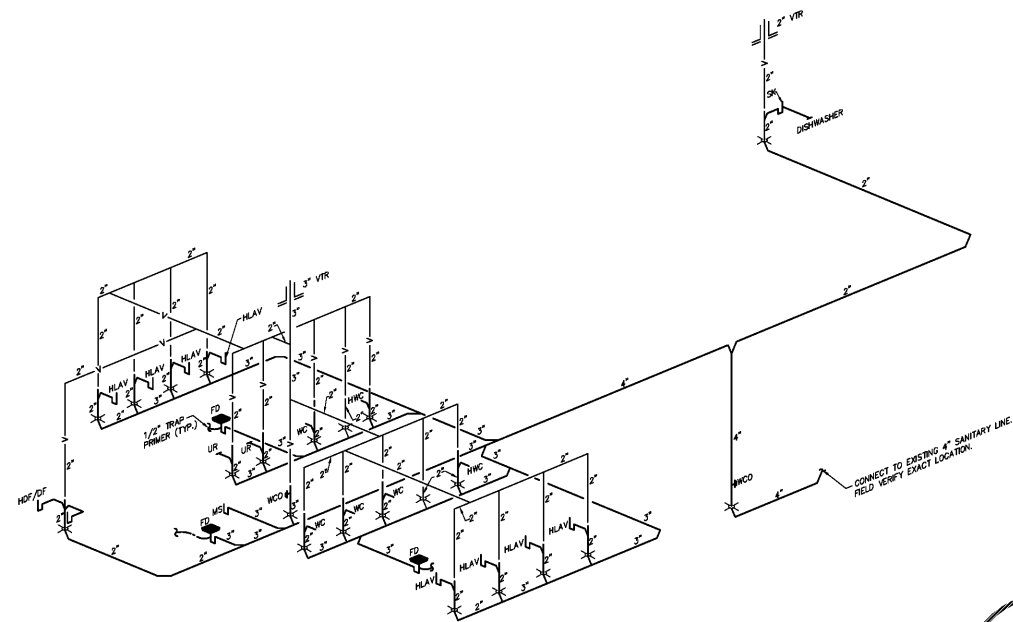
200% CONSTRUCTION DOCUMENTS 11.15.19

ISSUED FOR BIDDING 01.15.20

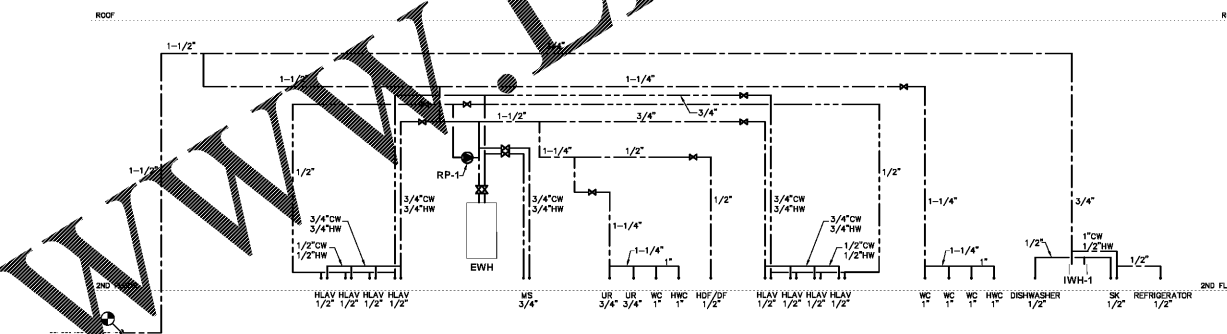
NOTE: READ THE SPECIFICATIONS
THIS SET OF DRAWINGS AND SPECIFICATIONS DEFINE PROJECT SCOPE AND CONTRACT REQUIREMENTS. INDIVIDUAL SHEETS SEPARATED FROM THE SET MAY NOT ACCURATELY REFLECT ALL INFORMATION NEEDED TO SUITABLY COVER CERTAIN ITEMS. DO NOT SEPARATE THIS SET OF DRAWINGS INTO INDIVIDUAL SHEETS.

SHEET TITLE
PLUMBING ISOMETRICS

P-501



1 SANITARY ISOMETRIC
P-501 SCALE: N.T.S.



2 DOMESTIC WATER RISER
P-501 SCALE: N.T.S.

Order Plans @

WWW.LDILine.com