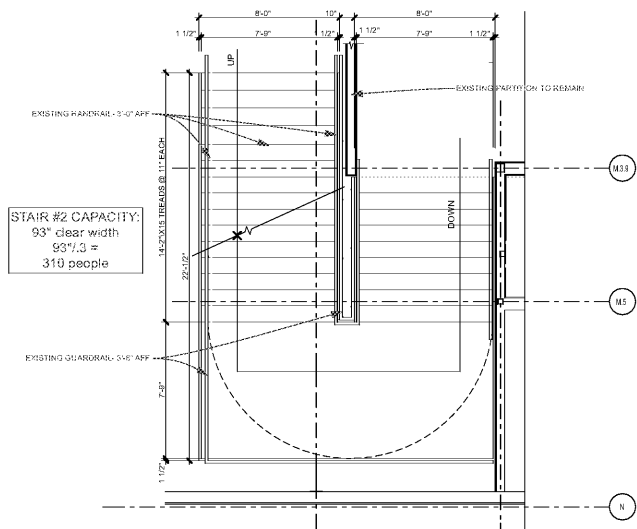
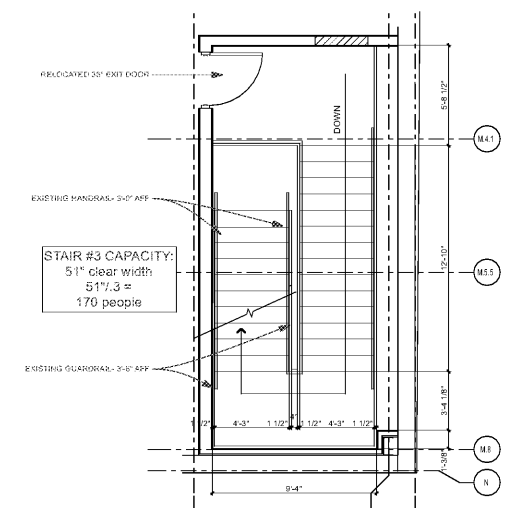


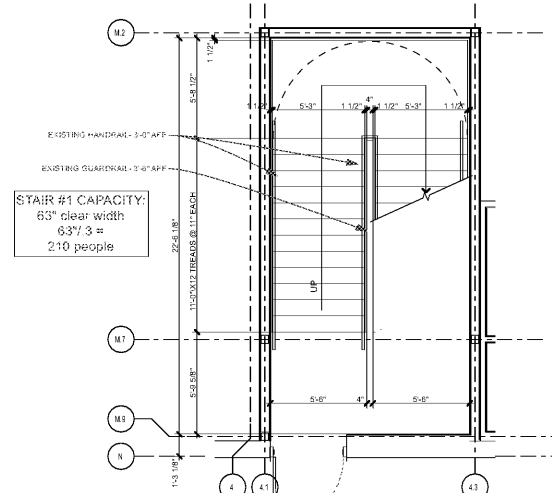
8
A-011
SCALE: 1/4" = 1'-0"



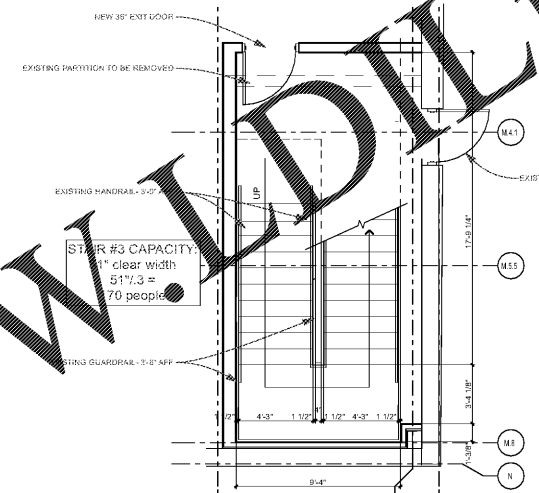
6
A-011
SCALE: 1/4" = 1'-0"



4
A-011
SCALE: 1/4" = 1'-0"



7
A-011
SCALE: 1/4" = 1'-0"



3
A-011
SCALE: 1/4" = 1'-0"

NOTE:
EXISTING STAIR DRAWINGS SHOWN AS REFERENCE ONLY. MAXIMUM OCCUPANCY AT MEZZANINE BASED ON EXISTING STAIR WIDTHS: 690 p.

NOTE:
MAXIMUM OCCUPANCY AT MEZZANINE BASED ON EXISTING STAIR WIDTHS: 690 p.
MAXIMUM OCCUPANCY BASED ON RENOVATED SQUARE FOOTAGE: 664 p.

LIFE SAFETY GENERAL NOTES

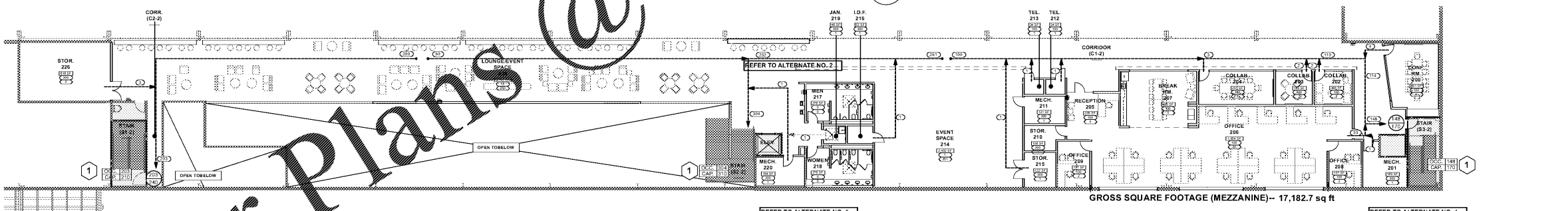
- REFER TO SHEET A-001 FOR CURRENT APPLICABLE CODES AND ORDINANCES.
- THE FIRST LEVEL IS THE LEVEL OF EXIT DISCHARGE PER 2012 NFPA 101, SECTION 3.3.8.1.
- NO CHANGES HAVE BEEN MADE TO THE OCCUPANCY CLASSIFICATION, OCCUPANT LOAD, QUANTITY OF EXITS, EXIT CAPACITY, OR LOCATION OF EXITS ON THE FIRST LEVEL OR THE MEZZANINE.

LIFE SAFETY KEY NOTES

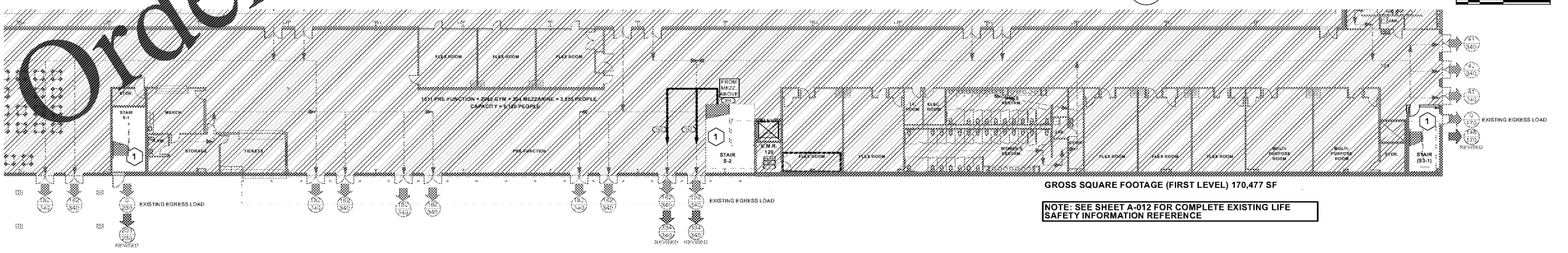
- EXISTING EXIT STAIRS WERE PERMITTED UNDER THE STANDARDS OF THE EXISTING CODE. STAIR CAPACITY, EGRESS WIDTH AND DIMENSIONS OF STAIR COMPONENTS WILL REMAIN AS-IS. EXIT STAIRS AND STAIR ENCLOSURES ARE TO MAINTAIN EXISTING FIRE PROTECTIVE MEASURES.

LIFE SAFETY LEGEND

	OCCUPANT LOAD NO. OF OCCUPANTS PER ROOM		ROOM INFORMATION ROOM NAME ACTUAL AREA OF ROOM (GROSS S.F. IN ()) OCCUPANT LOAD FACTOR PER CODE (S.F. PER OCCUPANT) NO. OF OCCUPANTS PER ROOM
	DISTRIBUTION OF OCCUPANTS ACTUAL OCCUPANT LOAD		EXIT SIGN
	DOOR CAPACITY CAPACITY OF EXIT DOOR		FIRE EXTINGUISHER CABINET (SEE SPECIFICATIONS)
	EXTERIOR BUILDING DISCHARGE (SEE SPECIFICATIONS)		ONE HOUR RATED PARTITION OR ENCLOSURE (MAINTAIN EXISTING FIRE PROTECTION MEASURES)
	DIRECTION OF TRAVEL TO EXIT		
	EXTENTS OF UNAFFECTED AREA		



2
A-011
SCALE: 1/16" = 1'-0"



1
A-011
SCALE: 1/16" = 1'-0"

Order Plans @

WWW.WJDLINE.COM

COOPER CARUSI COLLINS ARCHITECTS
3371 Peachtree Rd NE, Suite 400
Atlanta, Georgia 30326
404-873-0001

LP Indoor Pavilion, LLC
Managed by LakePoint Land, LLC

755 Highway 293
Emerson, GA 30137

RENOVATIONS TO LAKEPOINT SPORTS PAVILION MEZZANINE
755 Highway 293
Emerson, GA 30137

PROJECT NUMBER: 19016.00



RELEASED FOR CONSTRUCTION

PERMIT DOCUMENTS 12.18.19

ISSUED FOR BID 01.15.20

NOTE: READ THE SPECIFICATIONS THIS SET OF DRAWINGS AND SPECIFICATIONS DEFINE PROJECT SCOPE AND CONFORMANCE REQUIREMENTS. INDIVIDUAL SHEETS SEPARATED FROM THE SET MAY NOT ACCURATELY REFLECT ALL INFORMATION NEEDED TO SUITABLY COVER CERTAIN ITEMS. DO NOT SEPARATE THIS SET OF DRAWINGS INTO INDIVIDUAL SHEETS.

SHEET TITLE
FIRST LEVEL & MEZZANINE LEVEL LIFE SAFETY PLANS

A-011