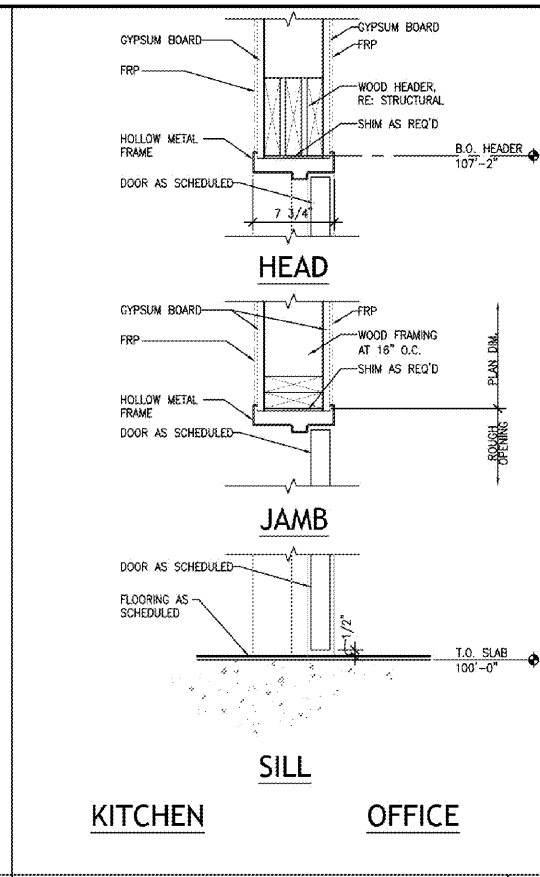
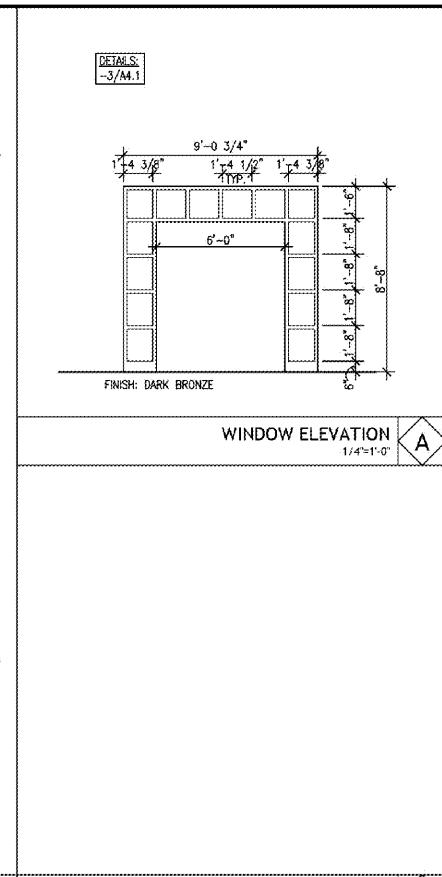


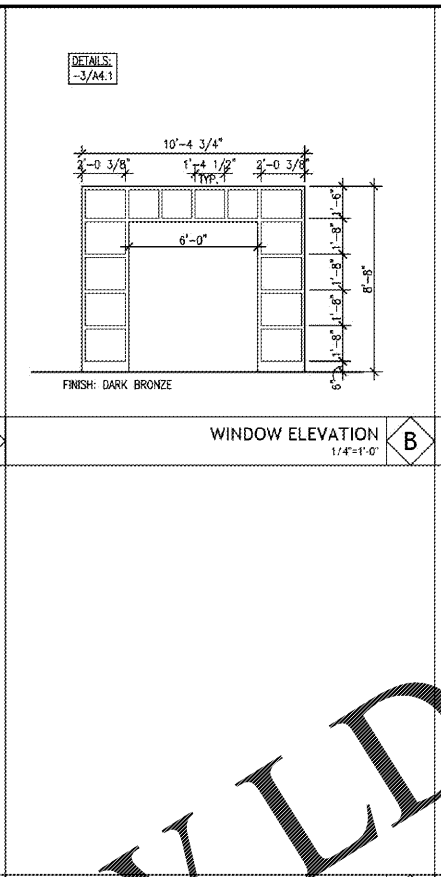
DOOR #6 DETAILS
1 1/2"=1'-0" 1



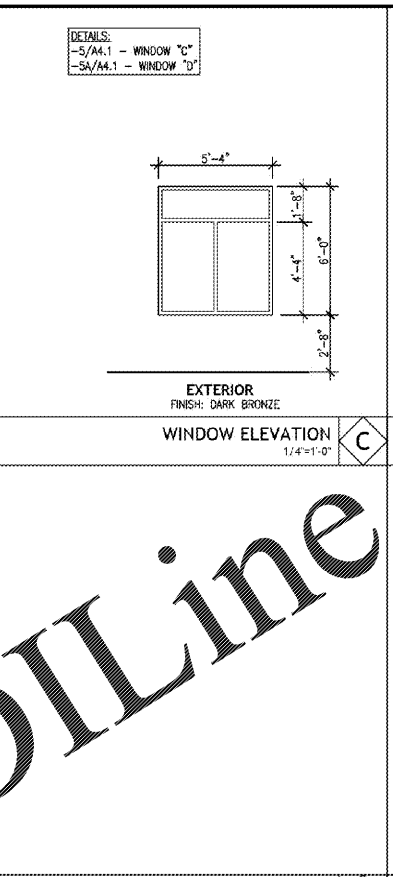
DOOR #9 DETAILS
1 1/2"=1'-0" 2



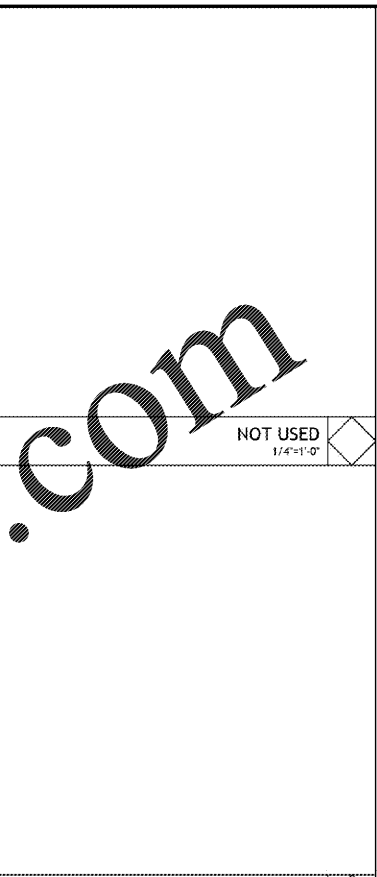
WINDOW ELEVATION A
1/4"=1'-0"



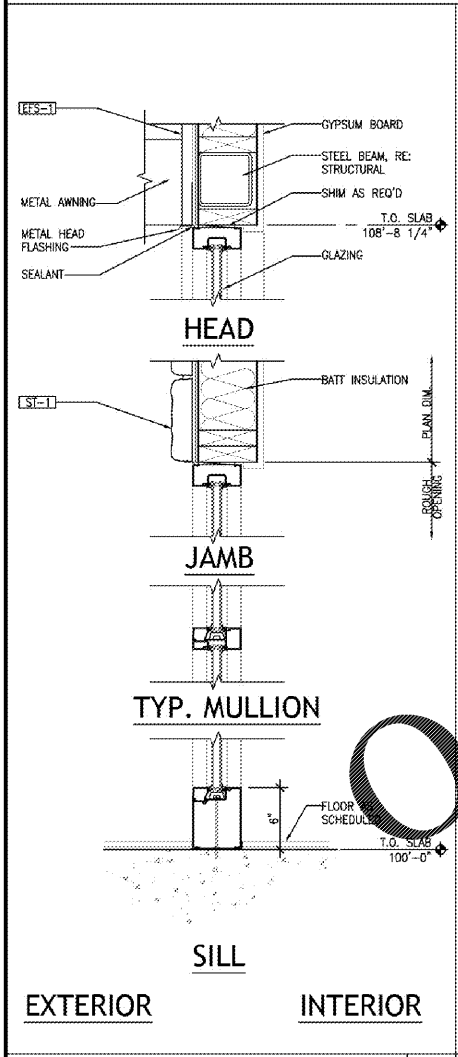
WINDOW ELEVATION B
1/4"=1'-0"



WINDOW ELEVATION C
1/4"=1'-0"



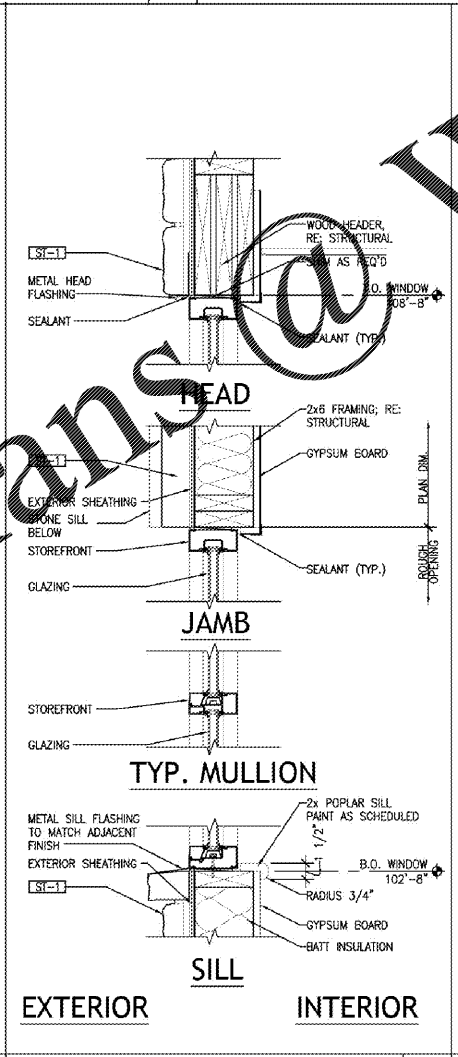
NOT USED
1/4"=1'-0"



WINDOW 'A' & 'B'(SIM) DETAIL
1 1/2"=1'-0" 3



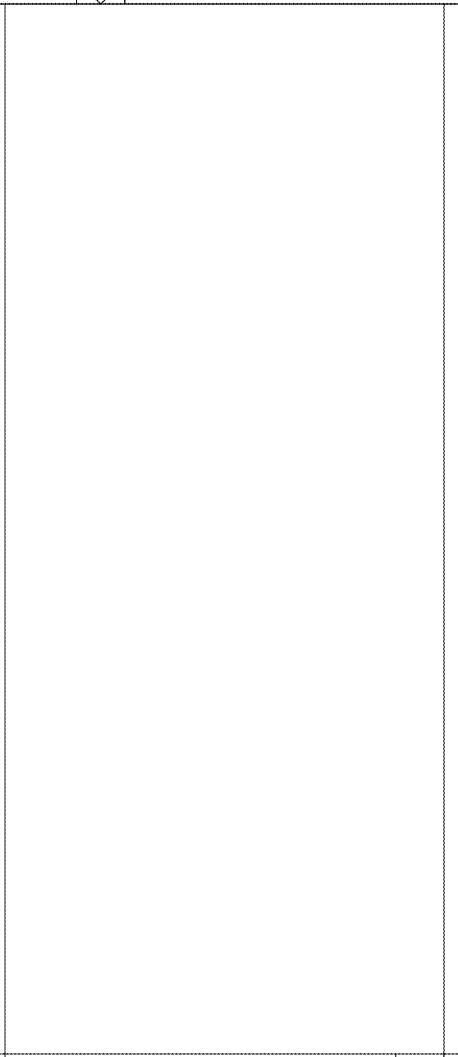
NOT USED
1 1/2"=1'-0" 4



WINDOW 'C' DETAIL
1 1/2"=1'-0" 5



NOT USED
1 1/2"=1'-0" 6



NOT USED
1 1/2"=1'-0" 7



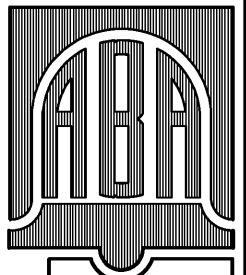
NOT USED
1 1/2"=1'-0" 8

DETAILS: -3/A4.1

DETAILS: -3/A4.1

DETAILS: -5/A4.1 - WINDOW 'C'
-5A/A4.1 - WINDOW 'D'

www.LDILine.com



BELL & ASSOCIATES ARCHITECTS
ALAN BELL, DOUG ELKINS
MARK SMITH, & TROY BELL
alanbellarchitect.com
128 LLOYD ROAD
CARROLLTON, GEORGIA 30117
PHONE (770) 650.8866 FAX (770) 650.0066

REVISIONS BY	

NEW RESTAURANT FOR:

VILLA RICA, GEORGIA

CONTRACTOR SHALL VERIFY ALL CONDITIONS AND DIMENSIONS BEFORE EXECUTING ANY WORK. THIS DOCUMENT IS THE SOLE PROPERTY OF ALAN BELL ARCHITECT AND SHALL NOT BE COPIED IN WHOLE OR IN PART WITHOUT EXPRESSED WRITTEN CONSENT FROM ALAN BELL ARCHITECT.



DATE: 1/28/2020
SCALE: AS NOTED
JOB NO.: 13-015-D01
SHEET
A4.1
OF 26 SHEETS