

REMARKS:
1. REFER TO SPECIFICATIONS FOR FINISH, HARDWARE AND MANUFACTURE.
2. (1) TEMPERED GLAZING (COMPLY WITH LOCAL CODE)

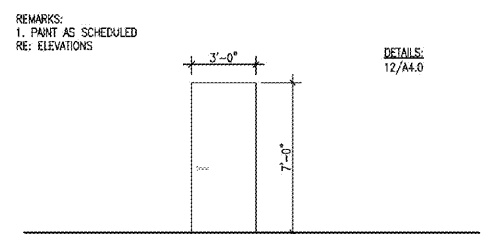
DETAILS:
11/A4.0

HARDWARE

DEVICE:
(3 SETS EACH) BUTT HINGES
(1) PANIC DEVICE DETEX V40XED
(1) LOCKSET (STOREFRONT LOCK)
(2 EACH) PULLS
(2) OVERHEAD CLOSER
(2) WEATHER STRIP
(2) DOOR STOP
(1) THRESHOLD
(2) SWEEPS

FINISH: DARK BRONZE

DOOR ELEVATION
1/4"=1'-0"



REMARKS:
1. PAINT AS SCHEDULED, RE: ELEVATIONS

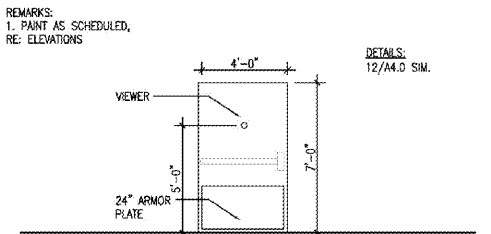
DETAILS:
12/A4.0

HARDWARE

DEVICE:
(1 1/2 SETS) BUTT HINGES
(1) LOCKSET (STOREFRONT LOCK)
(1 SET) FLUSH BOLTS
(1) WEATHER STRIP
(1) THRESHOLD
(1 SET) SWEEPS
(1) DOOR STOP (CHAIN TYPE)

FINISH: [E-1] EXTERIOR / [E-2] INTERIOR

DOOR ELEVATION
1/4"=1'-0"



REMARKS:
1. PAINT AS SCHEDULED, RE: ELEVATIONS

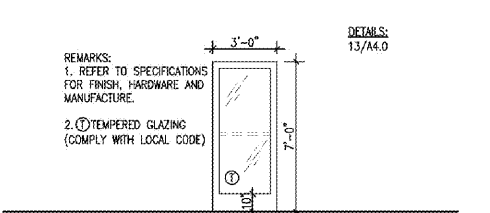
DETAILS:
12/A4.0 SIM.

HARDWARE

DEVICE:
(1) CONTINUOUS PIANO HINGE
(1) DOOR CLOSER
(1) 24" KICKPLATE
(1) PANIC DEVICE DETEX V40XED
(1) DOOR VIEWER
(1) DOOR HOLDER (KICK TYPE)
(1) FLOOR STOP
(1) WEATHER STRIP
(1 SET) SWEEPS
(1) THRESHOLD

FINISH: [E-1] EXTERIOR / [E-2] INTERIOR

DOOR ELEVATION
1/4"=1'-0"



REMARKS:
1. REFER TO SPECIFICATIONS FOR FINISH, HARDWARE AND MANUFACTURE.
2. (1) TEMPERED GLAZING (COMPLY WITH LOCAL CODE)

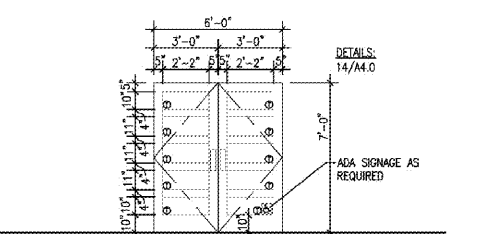
DETAILS:
13/A4.0

HARDWARE

DEVICE:
(1 1/2 SETS) BUTT HINGES
(1) CONCEALED DOOR CLOSER
(1) PANIC DEVICE DETEX V40XED
(1) WEATHER STRIP
(1 SET) SWEEPS
(1) THRESHOLD
(1) CONVENTIONAL DOOR STOP

FINISH: DARK BRONZE

DOOR ELEVATION
1/4"=1'-0"



REMARKS:
1. STAIN DOORS TO MATCH WILSONART 778 MAMBO.
(1) TEMPERED GLAZING (COMPLY WITH LOCAL CODE)

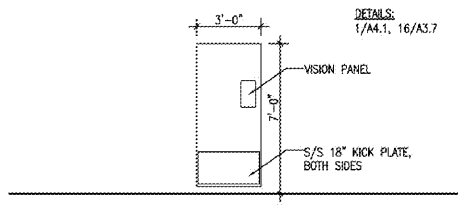
DETAILS:
14/A4.0

HARDWARE

DEVICE:
MCKINNEY 7 EDGE FINISHED CHROME HINGE, MCK-F-3700, FINISH: STEEL
(2) PULL - HARDWARE, CHROME BRASS STAINLESS STEEL, MODEL CR-SICRHS-36, FINISH: EN
(1) PUSH - DOORHANDLE 14" TEMPORARY STAINLESS STEEL, MODEL AS-14000-45-630
(2) OVERHEAD DOOR CLOSER, SARGENT MODEL 1431 Pg, FINISH: EN

FINISH: [E-1] EXTERIOR / [E-2] INTERIOR

DOOR ELEVATION
1/4"=1'-0"



REMARKS:
1. DOORS (C) AND (D): HPL-1 FINISH BOTH FACES

DETAILS:
17/A4.1, 16/A3.7

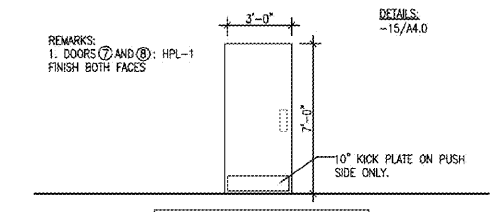
HARDWARE

ALL HARDWARE TO BE PROVIDED BY DOOR MANUFACTURER

ELIASON SCP-8 WITH ADA COMPLIANT VISION PANEL AND 18" SS KICK PLATE EA. SIDE

FINISH: TO MATCH PL-2

DOOR ELEVATION
1/4"=1'-0"



REMARKS:
1. DOORS (C) AND (D): HPL-1 FINISH BOTH FACES

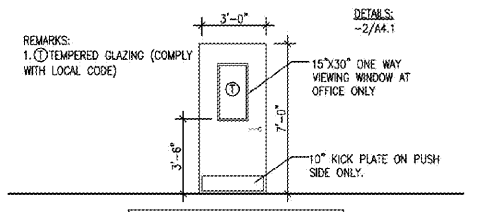
DETAILS:
-15/A4.0

HARDWARE

DEVICE:
(1 1/2 SETS) HINGE
(1) PUSH
(1) PULL
(1) CLOSER
(1) 10" KICK PLATE
(1 SET) SIGNAGE

FINISH: [E-2]

DOOR ELEVATION
1/4"=1'-0"



REMARKS:
1. (1) TEMPERED GLAZING (COMPLY WITH LOCAL CODE)

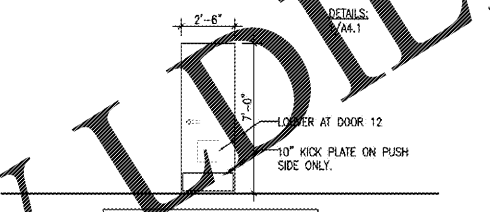
DETAILS:
-2/A4.1

HARDWARE

DEVICE:
(3 SETS) HINGES
(1) LOCKSET (ENTRANCE LOCK)
(1) DEADBOLT
(1) 10" KICK PLATE
(1) DOOR STOP
(1) WALL BUMPER
(1) OVERHEAD CLOSER

FINISH: [E-2]

DOOR ELEVATION
1/4"=1'-0"



REMARKS:
1. STAIN DOORS TO MATCH WILSONART 778 MAMBO.
(1) TEMPERED GLAZING (COMPLY WITH LOCAL CODE)

DETAILS:
7/A4.1

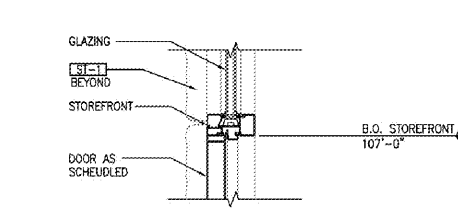
HARDWARE

DEVICE:
(1 1/2 SETS) HINGE
(1) LOCKSET (STORE LOCK)
(1) FLUSH BOLTS
(1) DOOR STOP (WALL TYPE)
(1) 10" KICK PLATE
(1) 12" X 12" LOUVER (DK) BRONZE

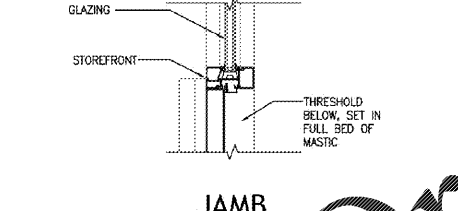
FINISH: [E-2]

CLOSET DOOR
1/4"=1'-0"

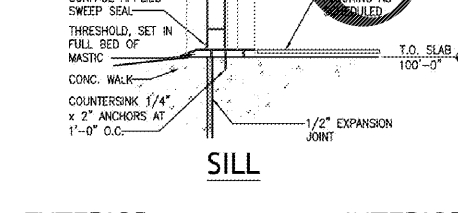
NOT USED
1/4"=1'-0"



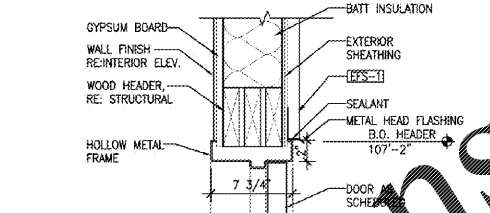
HEAD



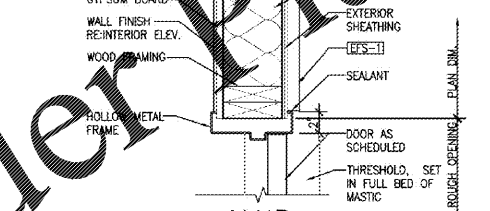
JAMB



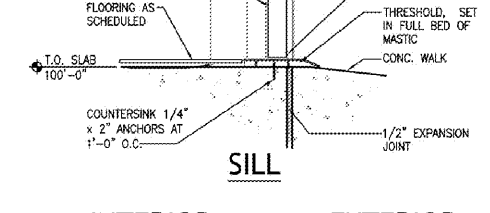
SILL



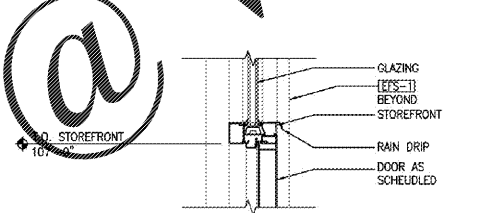
HEAD



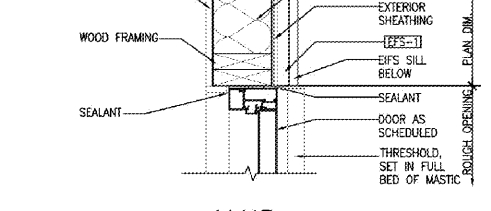
JAMB



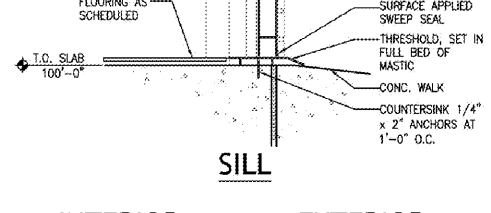
SILL



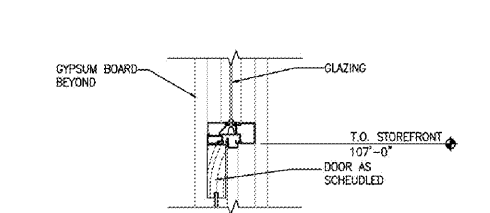
HEAD



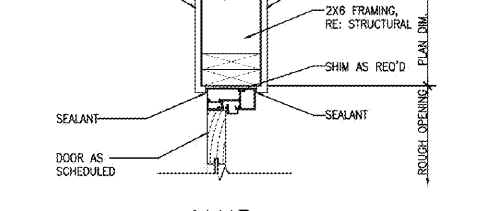
JAMB



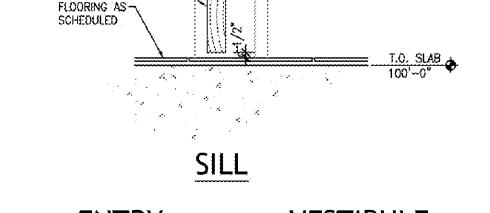
SILL



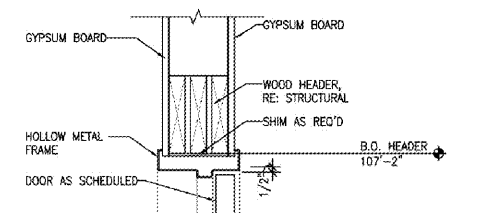
HEAD



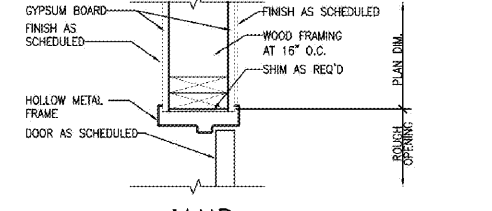
JAMB



SILL



HEAD



JAMB

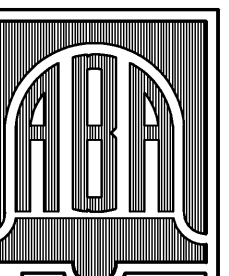


SILL

Order Plans

www.idilines.com

@



BELL & ASSOCIATES ARCHITECTS
ALAN BELL, DOUG ELKINS
MARK SMITH & TROY BELL
alanbell@architect.com
132 LOWMYER ROAD, SUITE 100
CLAYTON, GA 30530
PHONE (770) 880-8888 FAX (770) 880-6066

REVISIONS BY

NEW RESTAURANT FOR:
 VILLA RICA, GEORGIA

CONTRACTOR SHALL VERIFY ALL CONDITIONS AND DIMENSIONS BEFORE EXECUTING ANY WORK. THIS DOCUMENT IS THE SOLE PROPERTY OF ALAN BELL ARCHITECT AND SHALL NOT BE COPIED IN WHOLE OR IN PART WITHOUT EXPRESSED WRITTEN CONSENT FROM ALAN BELL ARCHITECT.



DATE: 1/28/2020
SCALE: AS NOTED
JOB NO.: 19-015-D01
SHEET
A4.0
OF 26 SHEETS

DOOR #1 DETAILS
1 1/2"=1'-0"

DOOR #2 AND #3 DETAILS
1 1/2"=1'-0"

DOOR #4 DETAILS
1 1/2"=1'-0"

DOOR #5 DETAILS
1 1/2"=1'-0"

DOOR #7 & #8 DETAILS
1 1/2"=1'-0"