

- KEY NOTES:**
- 1 LIGHT FIXTURES, RE: ELECTRICAL
 - 2 HATCHED AREA INDICATES AREA TO BE PREPPED FOR WALL COVERING
 - 3 BOOTHS AND SEATING, RE: MILLWORK
 - 4 WOOD SLAT DIVIDER; RE: MILLWORK
 - 5 SCHLUTER STRIP- JOLLY-AC (A-30) COLOR: HB LIGHT BEIGE
 - 6 PANEL INFILL; RE: 18/A3.7
 - 7 CORNER GUARDS BY K.E.C.
 - 8 HOOD; RE: MECHANICAL
 - 9 ELECTRICAL PANELS; RE: ELECTRICAL
 - 10 MOP SINK; RE: 01/A3.7
 - 11 WOOD TRIM, RE: 3/A3.7, (19/A3.7 AT JAMB), PAINT P-1
 - 12 CEILING FAN, RE: ELECTRICAL
 - 13 HOSTESS CABINET BY MILLWORK
 - 14 LINE OF WINDOWS AT WALL BEYOND BULKHEAD
 - 15 FIRE EXTINGUISHER CABINET, RE: 2/A3.7
 - 16 SAFE BY KEC
 - 17 CEILING BEYOND
 - 18 STAFF STATION RE: 15/A3.7
 - 19 ADJUSTABLE KV BRACKET, RE: SHEET
 - 20 2'X2' ACCESS PANEL, PAINT MATCH ADJACENT CEILING
 - 21 WALL MOUNTED TELEVISION, PROVIDE SET/WALL BACKING
 - 22 QUARTER ROUND B.MOULDING
 - 23 ACRYLIC PANEL BUBBLE SCREEN, RE: MILLWORK
 - 24 TRIPP MODEL SRW26US DATA CABINET

SERVICE AREA ELEVATION 1
1/4"=1'-0"

SERVICE AREA ELEVATION 2
1/4"=1'-0"

SERVICE AREA ELEVATION 3
1/4"=1'-0"

GALLEY ELEVATION 4
1/4"=1'-0"

FINISH SCHEDULE

BASE	
B-2 RUBBER BASE	JOHNSONITE
B-2 SAFETY FLOORING BASE	PROTECT-ALL FLOORING 800.544.9538

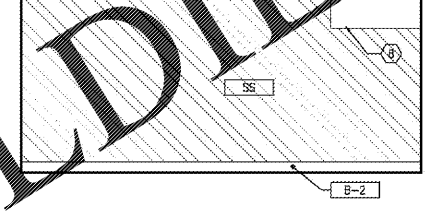
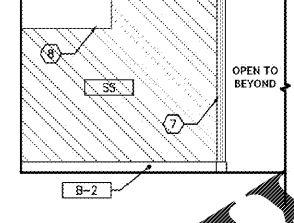
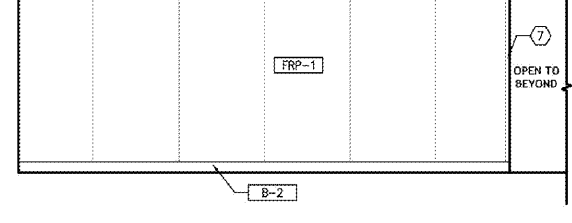
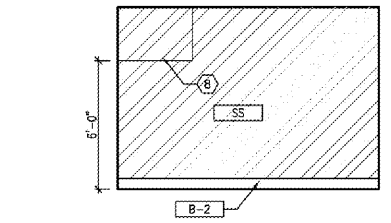
WAINSCOT AND WALLS	
WB-1 CUSTOM SORELL WALLBOARD	MARLITE (562) 926-7206
LVT-1 VINYL TILE WALL COVERING	PARTERRE
WT-1 ST. GERMAN PORCELAIN WALL TILE	AMERICAN OLEAN JOHN FUNK 913.573.0578
SS STAINLESS STEEL PANELS	BY K.E.C.
FRP-1 POLAR WHITE F.R.P.	MARLITE
WC-1 DECOR WALL COVERING (RED)	DIGITAL NICHE
WC-2 DECOR WALL COVERING (BLUE)	DIGITAL NICHE

CEILING	
CT-1 WHITE 2x2 CEILING PANELS	LOCAL USG DISTRIBUTOR 877-874-4200
CT-2 WHITE 2x4 VINYL FACED, NON-PERFORATED CEILING PANEL	LOCAL USG DISTRIBUTOR 877-874-4200

INTERIOR PAINT AND STAIN	
P-1 PURE WHITE (LATEX MATTE)	SHERWIN WILLIAMS
P-3 MEGA GREIGE (LATEX MATTE)	SHERWIN WILLIAMS
P-4 SCRUBTOUGH DOOR TRIM	WOLF GORDON SCUFFMASTER
P-5 COPPER MOUNTAIN (LATEX MATTE)	SHERWIN WILLIAMS
P-6 DYNAMIC BLUE (LATEX MATTE)	SHERWIN WILLIAMS
P-7 BLUE CHIP (LATEX MATTE)	SHERWIN WILLIAMS
P-8 SCRUBTOUGH DOOR TRIM	WOLF GORDON SCUFFMASTER
P-9 FOLKSTONE (LATEX MATTE)	SHERWIN WILLIAMS
WS-1 WOOD STAIN	

MISC. INTERIOR	
PL-1 CHOCOLATE WARP-PLASTIC LAMINATE	FORMICA - RICHELLE SMITH 616.377.6235
PL-2 BAILEY-PLASTIC LAMINATE	NEVAMAR - WENDY EYMEZ 816.536.8575
GMT-1 GLASS MOSAIC TILE	ROCA TILE - CHRISTINA DORDAS 708.910.2368
WN-1 CHARCOAL WINDOW SHADE	MAG RESSOURCES
SS-1 HOSTESS COUNTER TOP	DUPONT: 314.941.5179

**LOBBY AND ENTRY LOBBY HAVE
MOVED TO WEST ELEVATION. REFER
TO SHEET A10 FOR UPDATED LAYOUT**

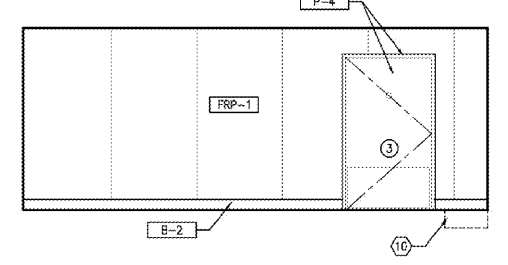
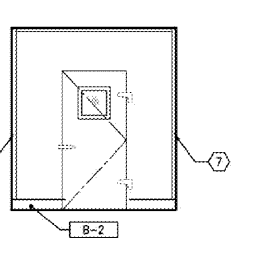
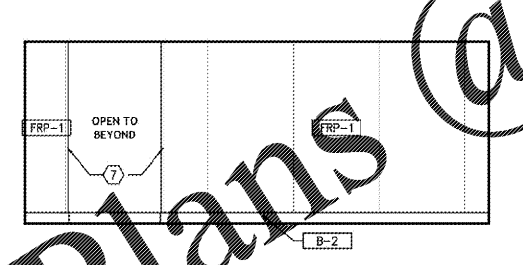
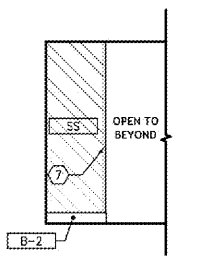
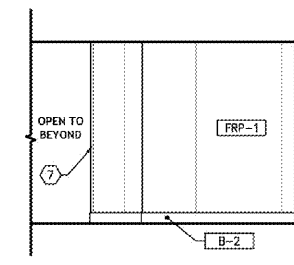


GALLEY ELEVATION 5
1/4"=1'-0"

GALLEY ELEVATION 6
1/4"=1'-0"

DISHWASH ELEVATION 7
1/4"=1'-0"

DISHWASH ELEVATION 8
1/4"=1'-0"



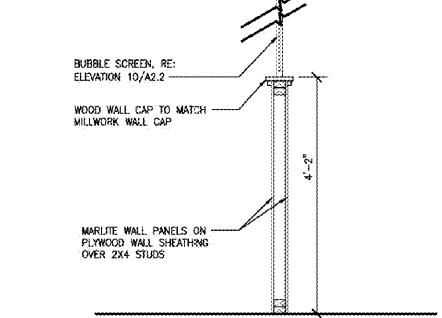
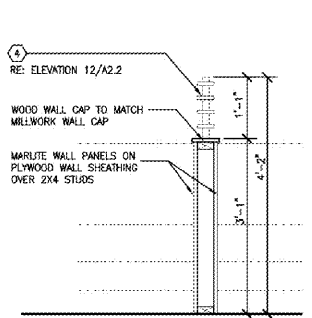
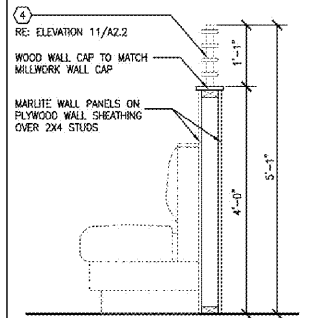
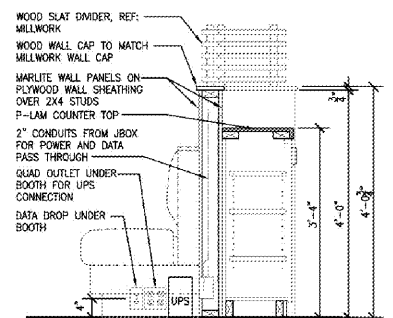
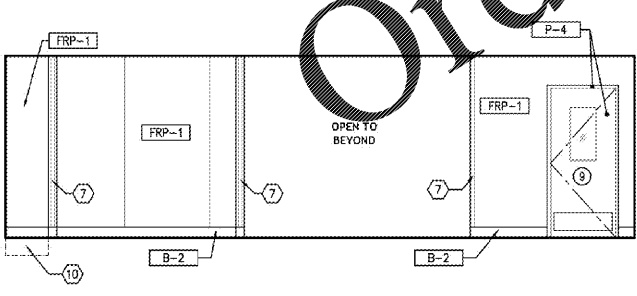
DISHWASH ELEVATION 9
1/4"=1'-0"

DISHWASH ELEVATION 10
1/4"=1'-0"

STORAGE ELEVATION 11
1/4"=1'-0"

STORAGE ELEVATION 12
1/4"=1'-0"

STORAGE ELEVATION 13
1/4"=1'-0"



KITCHEN ELEVATION 14
1/4"=1'-0"

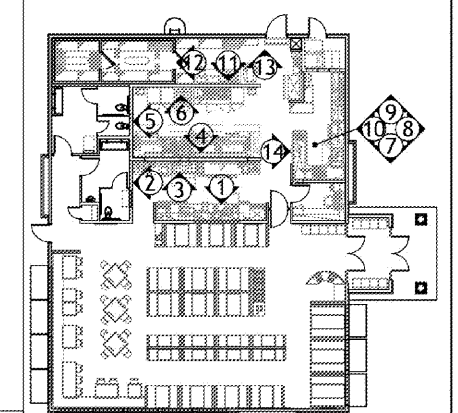
POS SECTION 15
3/4"=1'-0"

DINING PARTITION 16
3/4"=1'-0"

DINING PARTITION 17
3/4"=1'-0"

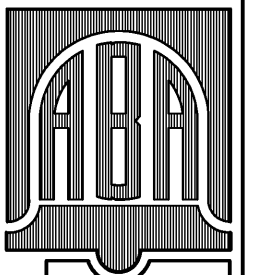
DINING PARTITION 18
3/4"=1'-0"

KEY PLAN



Order Plans @

WWW.IDIline.com



BELL & ASSOCIATES ARCHITECTS
ALAN BELL, DOUG ECKINS
MARK SMITH, & TROY BELL
alanbell@architect.com
128 LLOYDWOOD ROAD
CARROLLTON, GEORGIA 30117
PHONE: (770) 850.6566 FAX: (770) 850.5066

REVISIONS	BY

NEW RESTAURANT FOR:

VILLA RICA, GEORGIA

CONTRACTOR SHALL VERIFY ALL CONDITIONS AND DIMENSIONS BEFORE EXECUTING ANY WORK. THIS DOCUMENT IS THE SOLE PROPERTY OF ALAN BELL ARCHITECT AND SHALL NOT BE COPIED IN WHOLE OR IN PART WITHOUT EXPRESSED WRITTEN CONSENT FROM ALAN BELL ARCHITECT.



DATE: 1/28/2020
SCALE: AS NOTED
JOB NO.: 19-015-D01
SHEET
A2.3
OF 26 SHEETS