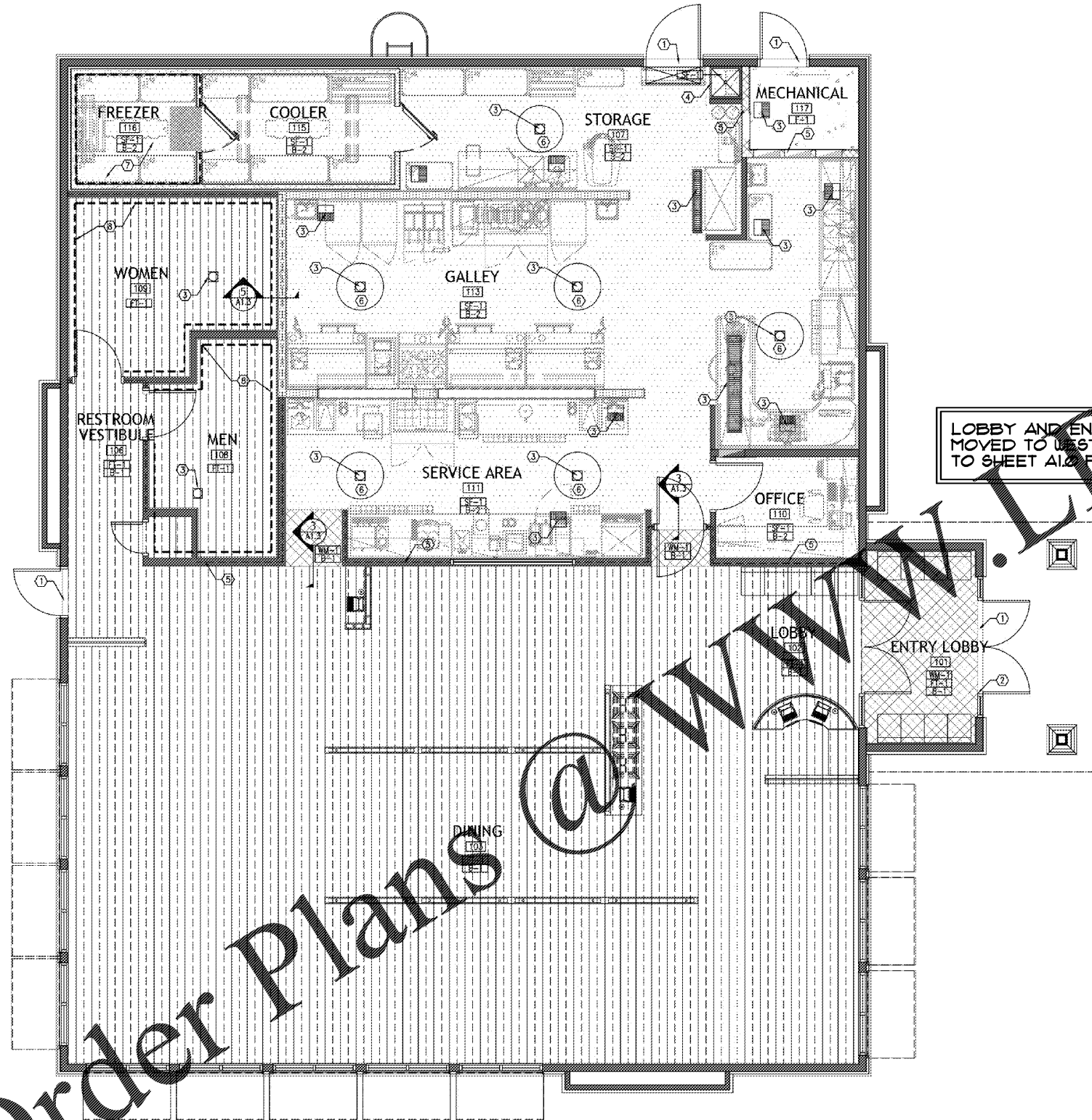


Order Plans @ www.abadlline.com



LOBBY AND ENTRY LOBBY HAVE MOVED TO WEST ELEVATION. REFER TO SHEET A1.2 FOR UPDATED LAYOUT

GENERAL NOTES

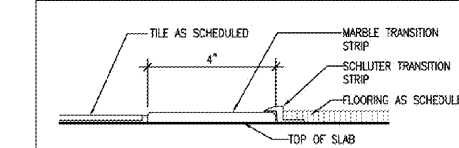
- REFER TO FINISH SCHEDULE AND DETAILS FOR APPLIED FINISHES.
 - REFER TO PLUMBING PLANS FOR ALL FLOOR DRAINS, FLOOR SINKS AND TRENCH DRAINS.
- KEY NOTES:**
- ALUMINUM THRESHOLD
 - START POINT OF TILE PATTERN
 - FLOOR DRAIN, FLOOR SINKS AND TRENCH DRAINS, RE: PLUMBING
 - MOP SINK, RE: 1/A3.7
 - CONCRETE CURB, RE: STRUCTURAL
 - SLOPE CONCRETE SLAB TO DRAIN AS NOTED, RE: STRUCTURAL
 - AREA OF RECESSED, INSULATED SLAB AT FREEZER, RE: STRUCTURAL
 - PERIMETER UNDER TILE WATERPROOF MEMBRANE, REFER TO 17/A3.7

FLOOR FINISH LEGEND

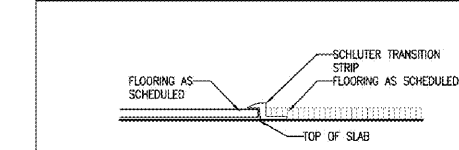
	PORCELAIN TILE (FT-1)
	ECO-GRIP SAFETY FLOORING (SF-1)
	WALK-OFF MAT (WM-1)
	EXPOSED CONCRETE (F-1)

SCHEDULE LEGEND

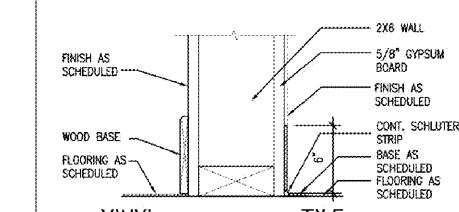
TAG	ITEM	MANUFACTURER/ SUPPLIER
FLOOR		
FT-1	WILLOW BEND PORCELAIN TILE	DALTILE: 816.785.7268
SF-1	SAFETY FLOORING	PROTECT-ALL FLOORING 800.544.9539
WM-1	WALK-OFF MAT	MATS INC. 781.573.0228
F-1	EXPOSED CONCRETE (UNSEALED)	
BASE		
B-1	RUBBER BASE	JOHNSONITE
B-2	SAFETY FLOORING BASE	PROTECT-ALL FLOORING 800.544.9539



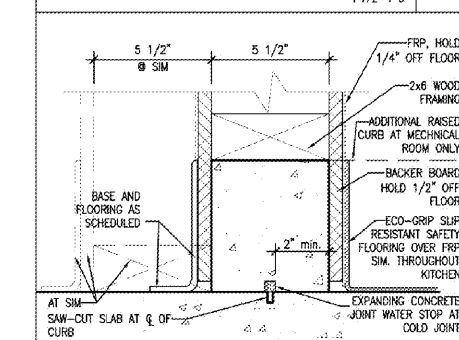
FLOOR TRANSITION DETAIL 2
3'-1'-0"



FLOOR TRANSITION DETAIL 3
3'-1'-0"

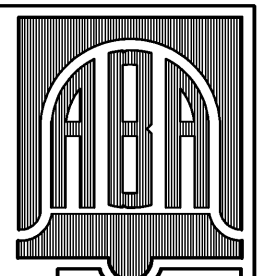


BASE DETAIL 4
1 1/2'-1'-0"



CURB DETAIL 5
3'-1'-0"

FINISH FLOOR PLAN
1/4"-1'-0" 1



BELL & ASSOCIATES ARCHITECTS
ALAN BELL, DOUG ELKINS
MARK SMITH & TROY BELL
albell@bellarchitect.com
128 JOYBOUR ROAD
CAROLTON, GEORGIA 30117
PHONE (770) 581.6666 FAX (770) 581.6666

REVISIONS	BY

NEW RESTAURANT FOR:

VILLA RICA, GEORGIA

CONTRACTOR SHALL VERIFY ALL CONDITIONS AND DIMENSIONS BEFORE EXECUTING ANY WORK. THIS DOCUMENT IS THE SOLE PROPERTY OF ALAN BELL ARCHITECT AND SHALL NOT BE COPIED IN WHOLE OR IN PART WITHOUT EXPRESSED WRITTEN CONSENT FROM ALAN BELL ARCHITECT.



DATE: 1/28/2010
SCALE: AS NOTED
JOB NO.: 19-015-D01
SHEET
A1.3
OF 26 SHEETS