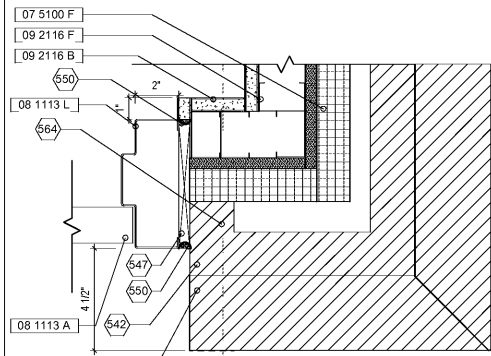


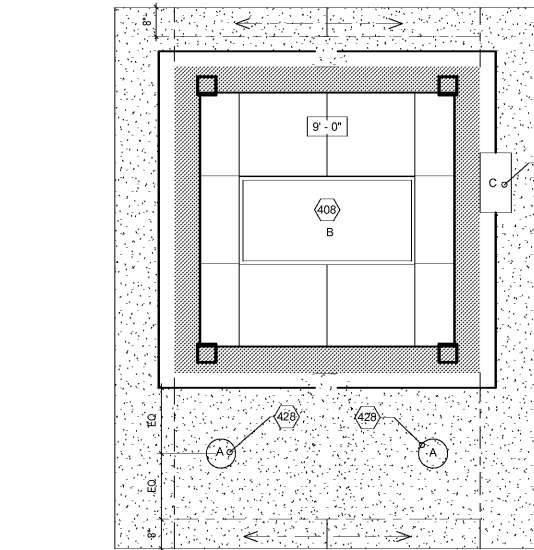
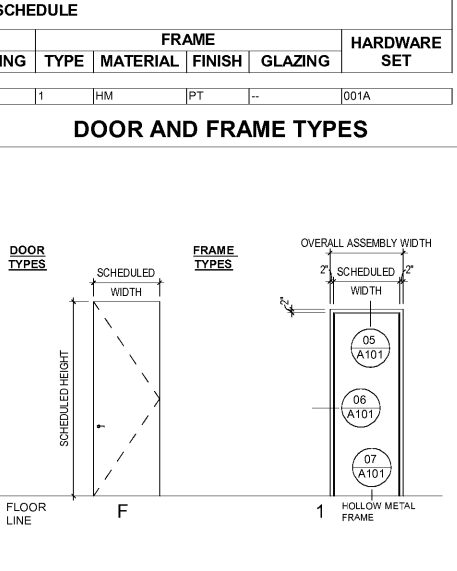
05 DETAIL AT HM HEAD
A101 3" = 1'-0"



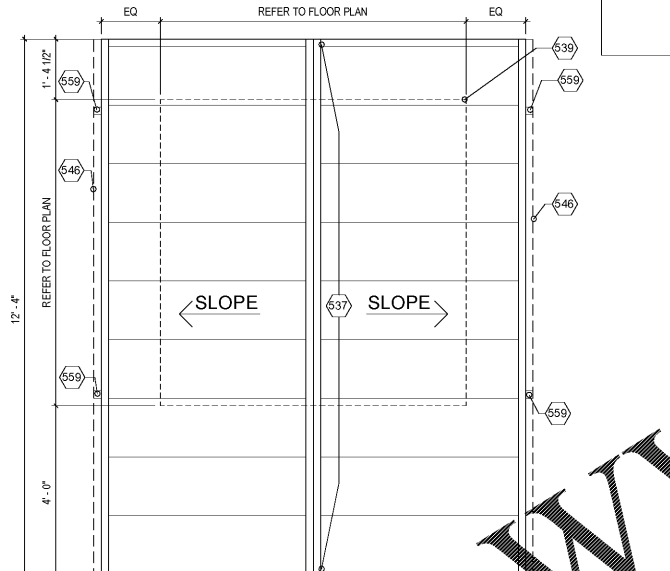
06 DETAIL AT HM JAMB
A101 3" = 1'-0"

OPENING SCHEDULE														
MARK	OPENING				FRAME				HARDWARE SET					
	WIDTH	HEIGHT	TYPE	MATERIAL	FINISH	GLAZING	TYPE	MATERIAL	FINISH	GLAZING				
01	3'-0"	7'-0"	F	HM	PT	--	1	HM	PT	--	001A			

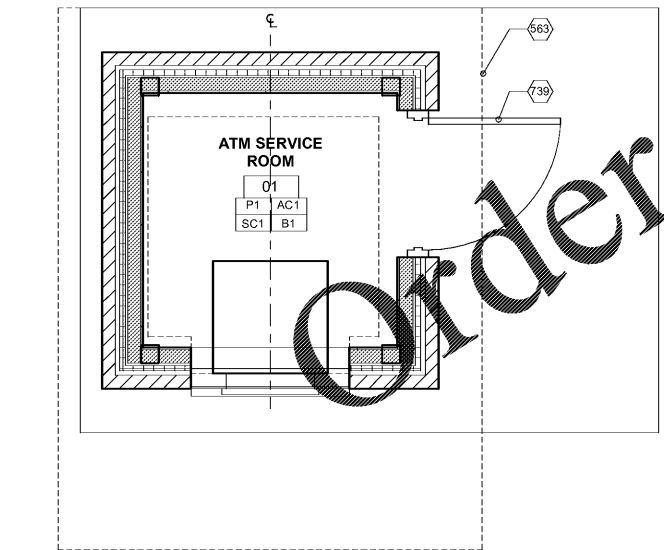
07 DETAIL AT HM SILL
A101 3" = 1'-0"



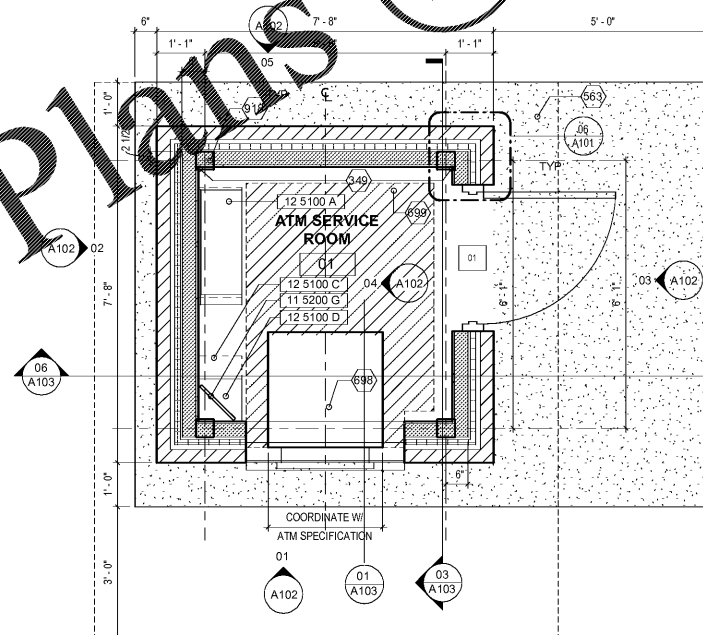
03 REFLECTED CEILING PLAN - ATM KIOSK
A101 1/2" = 1'-0"



04 FLOOR PLAN - ENLARGED ROOF PLAN
A101 1/2" = 1'-0"



01 NEW WORK FINISH PLAN - ATM KIOSK
A101 1/2" = 1'-0"



02 NEW WORK FLOOR PLAN - ATM KIOSK
A101 1/2" = 1'-0"

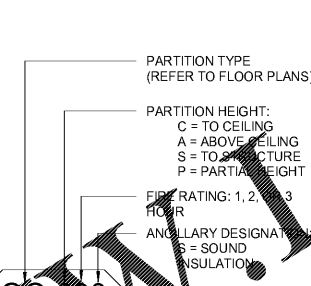
SHEET KEYNOTES

- 349 WALL TO BE DEDICATED FOR THE LOCATION OF NETWORK EQUIPMENT (ALARM PANEL, POWER PANEL, SMART JACK, VOICE LINE) AND POSER METER. ROUTER TO BE INSTALLED ON A PLYWOOD BACK BOARD. ENSURE THAT CONDUIT FOR POWER AND PHONE PENETRATES THIS WALL.
- 408 NEW 2'X4' LIGHT FIXTURE. REFER TO ELECTRICAL DRAWINGS FOR ADDITIONAL INFORMATION.
- 428 NEW CAN LIGHT FIXTURE. REFER TO ELECTRICAL DRAWINGS FOR MORE INFORMATION.
- 430 NEW WALL MOUNTED LIGHT FIXTURE. REFER TO ELECTRICAL DRAWINGS AND ELEVATION FOR MORE INFORMATION.
- 537 RIDGE VENT. MATCH EXISTING BUILDING SPECIFICATIONS. DASHED LINE INDICATES BUILDING FOOT PRINT BELOW.
- 541 BULLNOSE BRICK SILL.
- 542 NEW VENEER BRICK WALL TO MATCH EXISTING BUILDING SPECIFICATIONS.
- 546 2" GUTTER. COLOR TO MATCH EXISTING BUILDING. BLOCKING AS REQUIRED.
- 550 SEALANT OVER BACKER ROD.
- 552 FOUNDATION. FOR MORE INFORMATION REFER TO STRUCTURAL DRAWINGS.
- 559 3" DIA OR 3"X3" RECTANGULAR DOWNSPOUT. COLOR TO MATCH EXISTING BUILDING.
- 563 DASHED LINE INDICATES ROOF LINE ABOVE.
- 564 TYVEK VAPOR BARRIER. VAPOR BARRIER TO BE APPLIED ON TOP OF THE INSULATION AS SHOWN IN DETAIL ON SHEET A103.
- 567 5/8" EXTERIOR GRADE FIBER CEMENT BOARD PANELS. ATM KIOSK BY OWNER. BASIS OF DESIGN DIEBOLD OPTIVA 740 ADVANCED FUNCTION DRIVE-UP ATM THROUGH THE WALL. 4 HIGH WITH 13MM (1/2)" CHEST.
- 699 DASHED LINE INDICATES MINIMUM ATM SERVICE CLEARANCE.
- 739 PAINT DOOR TO MATCH EXISTING EXTERIOR COLOR OR BRANCH.
- 918 STRUCTURAL COLUMN. REFER TO STRUCTURAL DOCUMENTS.

REFERENCE KEYNOTES

- 06 1000 A 5/8" PLYWOOD SHEATHING
- 07 5100 F 2" RIGID INSULATION
- 08 1113 A HOLLOW METAL DOOR
- 08 1113 L SCHEDULED SILLS IN SILLANT. REFER TO SPECIFICATIONS
- 08 1113 M HOLLOW METAL DOOR FRAME AT EXTERIOR WALL. FILL WITH OSB/INSULATION
- 1113 B FOLLOW UP WITH FRAME BEYOND AT EXTERIOR WALL. FILL WITH CLOSED CELL SPRAY INSULATION.
- 09 2116 B 1" EXTERIOR GYPSUM BOARD. FINISH AND PAINT TO MATCH EXISTING.
- 09 2116 F METAL STUDS AT 16" OC. SEE STRUCTURAL FOR SIZING.
- 09 2116 L 3 5/8" METAL FRAMING BOX HEADER
- 09 2427 A STUCCO TO MATCH EXISTING.
- 12 5100 A MONITOR FOR SECURITY FEED TO BE PROVIDED BY OWNER. (1) 30" X 18" WALL MOUNTED FOLDABLE STAINLESS STEEL WRAPPED COUNTER WITH EASED EDGES. BASIS OF DESIGN HARDWARE SOURCE HEAVY DUTY SHELF SUPPORT. SIZE LARGE. 750 LB HINGE. PROVIDE FRT AND IN WALL BLOCKING AS REQUIRED.
- 12 5100 C 1'-0" X 1'-6" WALL MOUNTED FIXED LAMINATE SHELF AT 2'-10 1/2" AFF. CONCEALED SUPPORT AS REQUIRED TO SUPPORT SHELF. WRAPPED COUNTER WITH EASED EDGES. BASIS OF DESIGN RAKKS BRACKET MODEL. EH-1209. FINISH TO BE L2 - FORMICA FLAX GAUZE #7708-58 FOR COUNTERTOPS.
- 12 5100 D 1'-0" X 1'-0" WALL MOUNTED FIXED LAMINATE MONITOR SHELF AT 7'-6" AFF. CONCEALED SUPPORT AS REQUIRED TO SUPPORT SHELF. SPACE AS NEEDED TO SUPPORT SHELF. SUPPORT TO BE IN WALL RAKKS BRACKET MODEL. EH-1209. FINISH TO BE L2 - FORMICA FLAX GAUZE 37708-58 FOR COUNTERTOPS.

PARTITION SYMBOL KEY



FINISH LEGEND

PAINT (P)	
P1	MFG: SHERWIN WILLIAMS COLOR: SW 7028 INCREDIBLE WHITE

ACOUSTIC CEILING TILE (AC)	
AC1	MFG: ARMSTRONG STYLE: OPTIMA ITEM NO: 3250 SIZE: 24" X 24" X 1" COLOR: WHITE GRID: SQUARE REGULAR 15/16"

BASE (B)	
B1	MFR: ROPPE STYLE: RUBBER BASE ITEM #191 SIZE: 4" HIGH

SEALED CONCRETE (SC)	
SC1	MFG: TBD COLOR: CONCRETE SEALER/HARDENER FINISH:

GENERAL DRAWING NOTES

- A. ALL DOORS ARE 1-3/4" THICK UNLESS NOTED OTHERWISE. REFER TO FINISH PLANS AND SCHEDULE FOR FLOOR FINISH.
- B. ALLOW CLEARANCE AT DOOR BOTTOM AS REQUIRED FOR PROPER DOOR OPERATION.
- C. REFER TO SPECIFICATIONS FOR WOOD VENEER, ALUMINUM FINISH PLASTIC LAMINATE, AND METAL CLADDING TYPES.
- D. DOOR TYPES ARE BASED ON STEEL DOOR INSTITUTE PUBLICATION SD 108 UNLESS NOTED OTHERWISE. STILE AND RAIL DIMENSIONS AND GLAZED OPENING SIZES SHALL BE DOOR MANUFACTURER'S STANDARD FOR DOOR TYPE INDICATED, UNLESS NOTED OTHERWISE.
- E. PROVIDE KNURLED LEVER HARDWARE AT ALL DOORS LEADING TO DANGEROUS AREAS SUCH AS LOADING PLATFORMS, SWITCH ROOMS, AND MECHANICAL ROOMS.
- F. PROVIDE SILENCERS TO ALL HOLLOW METAL DOOR FRAMES.
- G. DOOR HARDWARE SUPPLIER/INSTALLER MUST COORDINATE INSTALLATION OF HARDWARE WITH SECURITY/ELECTRICAL CONTRACTOR PRIOR TO INSTALLATION.
- H. EDGE OF DOOR FRAME TO BE 4" FROM FINISHED FACE OF PARTITION AT HINGE SIDE OF FRAME UNLESS NOTED OTHERWISE.

DOOR MATERIALS

HM HOLLOW METAL

FRAME TYPES

HM HOLLOW METAL

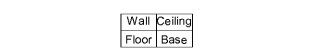
FINISH TYPES

PT PAINTED FINISH

DOOR HARDWARE SETS

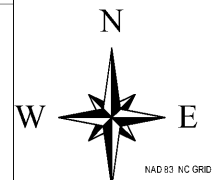
- HARDWARE SET NO. 001A (ACCESS CONTROL) EXTERIOR DOORS**
- HEAVY DUTY HINGES
 - ELECTRONIC LOCKSET WITH LEVER (BY SECURITY VENDOR)
 - CLOSER WITH HOLD OPEN
 - CARD READER (BY SECURITY VENDOR)
 - MOTION DETECTOR (BY SECURITY VENDOR)
 - DOOR CONTACT (BY SECURITY VENDOR)
 - EMERGENCY RELEASE BUTTON (BY SECURITY VENDOR)
 - 1 DOOR SWEEP
 - 1 THRESHOLD
 - FRAME WEATHER STRIP
 - 1 DOOR SCOPE - DOOR VIEWER - DS/1000 BLACK BY MID SUPPLY
 - 1 DEAD BOLT SCHLAGE
 - PROVIDE 20 COPIES OF KEYS

FLOOR PLAN KEY



FINISH & MATERIAL ABBREVIATIONS

- * = INDICATES MORE THAN ONE FINISH. REFER TO GENERAL FINISH NOTES
- AC = ACOUSTICAL CEILING TILE
- B = WALL BASE
- CN = CONCRETE
- GB = GYPSUM WALLBOARD - PAINTED
- GL = GLAZING
- P = PAINT
- SP = REFER TO SPECIFICATIONS FOR FINISH



RALEIGH
156 PAVESVILLE ST.
SUITE 400
RALEIGH, NC 27605
PHONE: 919.861.3054

PITTSBURGH
4475 LENOX PK.
SUITE 300
PITTSBURGH, PA
PHONE: 412.691.4011

ATLANTA
713 PEACHTREE AVE. ST.
SUITE 100
ATLANTA, GA 30308
PHONE: 770.345.3600

CHARLOTTE
300 WEST 3RD STREET
SUITE 500
CHARLOTTE, NC 28202
PHONE: 352.221.5624
ADDRESS: WWW.BHDP.COM

1 GLENWOOD AVE. SUITE
600 RALEIGH, NC
919.759.9977

1020 DAVID TAYLOR DR., SUITE 115
CHARLOTTE, NC
28202

704.714.4880
5030 NEW CENTRE DR., SUITE B
WILMINGTON, NC
28406
910.523.5715
sepiinc.com



CRENMAN CONSULTING
www.crenmanconsulting.com
3516 Bush Street, Suite 200
Raleigh, North Carolina 27608
919.871.1079 Fax 919.871.9620



lynchmykins
301 N West St., Ste 105
Raleigh, NC 27616
919.782.1833 - lynchmykins.com
Professional Engineering
Corporation No. C-4360



3 WORKING DAYS
BEFORE YOU DIG
FOR THE LOCATION OF
UNDERGROUND UTILITIES

THE LOCATIONS OF EXISTING UNDERGROUND UTILITIES ARE SHOWN IN AN APPROXIMATE MANNER. THE CONTRACTOR SHALL VERIFY THE EXACT LOCATION OF ALL EXISTING UTILITIES BEFORE COMMENCING WORK AND ACCEPTS TO FULLY RESPONSIBILITY FOR ANY AND ALL DAMAGES WHICH MIGHT BE OCCASIONED BY THE CONTRACTOR'S FAILURE TO EXACTLY LOCATE AND PREPARE ANY AND ALL UNDERGROUND UTILITIES.

GENERAL ARCHITECTURAL NOTES

- A. REFER TO DRAWING G001 FOR GENERAL PROJECT NOTES.
- B. COORDINATE SIZE AND LOCATION OF NEW EQUIPMENT WITH NEW PARTITION LAYOUT.
- C. REFER TO MEP DOCUMENTS FOR EXTENT OF MEP WORK.

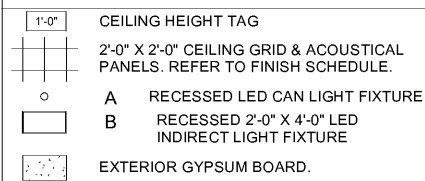
GENERAL RCP NOTES

- A. REFER TO GENERAL PROJECT NOTES ON SHEET G001.
- B. ALL ACOUSTIC CEILING TILES ARE 9'-0"
- C. REFER TO REFLECTED CEILING PLANS AND FINISH PLANS FOR CEILING TYPES & HEIGHTS.
- D. CEILING PLANS ARE FOR FIXTURE LOCATION AND CEILING TYPE ONLY. REFER TO HVAC AND ELECTRICAL FOR FURTHER INFORMATION.
- E. REFER TO FINISH PLANS AND SPECIFICATIONS.
- F. REFER TO ELECTRICAL CONSTRUCTION DOCUMENTS FOR ELECTRICAL FIXTURES AND EQUIPMENT INSTALLED IN, SUPPORTED BY, PENETRATING, OR OTHERWISE AFFECTING CEILING CONSTRUCTION. COORDINATE WITH ELECTRICAL CONTRACTORS FOR THESE ITEMS.
- G. REFER TO MECHANICAL CONSTRUCTION DOCUMENTS (HVAC, PLUMBING, FIRE PROTECTION) FOR MECHANICAL FIXTURES AND EQUIPMENT INSTALLED IN, SUPPORTED BY, PENETRATING, OR OTHERWISE AFFECTING CEILING CONSTRUCTION. COORDINATE WITH MECHANICAL CONTRACTORS FOR THESE ITEMS.
- H. CONTRACTOR TO REVIEW LAYOUT AND NOTIFY ARCHITECT OF CEILING PANELS THAT ARE LESS THAN 3" IN WIDTH OR LENGTH.
- I. ALL NEW LIGHT FIXTURES, EXIT SIGNS, SPRINKLER HEADS AND TERMINAL DEVICES TO BE CENTERED IN CEILING PANELS, UNLESS OTHERWISE INDICATED.
- J. ALL CEILING TO BE CENTERED IN ROOMS UNO.
- K. SUBMIT SAMPLES IN ACCORDANCE WITH SPECIFICATIONS OF EACH FINISH TO THE ARCHITECT FOR REVIEW PRIOR TO ORDERING.

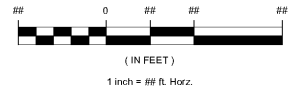
GENERAL FINISH PLAN NOTES

- A. REFER TO SPECIFICATIONS FOR ALL FINISH REQUIREMENTS.
- B. CONTRACTOR TO PROVIDE ALL LEVELING MATERIAL AS REQUIRED TO ENSURE AN ADEQUATE LEVEL SUBSTRATE FOR FINISH MATERIAL INSTALLATION.
- C. ALL PARTITIONS ARE TO RECEIVE P1 PAINT UNLESS OTHERWISE INDICATED. REFER TO SPECIFICATIONS FOR PRIMING, NUMBER OF COATS AND TYPES OF PAINT FINISH. REFER TO FINISH PLANS FOR LOCATIONS OF ACCENT PARTITIONS.
- D. ALL ACOUSTICAL CEILING TILE TO BE AC1 UNO. REFER TO FINISH PLANS.
- E. B1 BASE THROUGHOUT ENTIRE WORK AREA, UNLESS OTHERWISE NOTED.
- F. ALL HOLLOW METAL FRAMES ARE TO BE PAINTED TO MATCH THE ADJACENT WALL COLOR, UNLESS OTHERWISE NOTED. REFER TO DOOR SCHEDULE FOR FRAME TYPES AT DOOR OPENINGS. TRANSITION BETWEEN DISSIMILAR MATERIALS IS TO OCCUR DIRECTLY AT THE CENTERLINE OF THE DOOR IN THE CLOSED POSITION.
- G. COLOR CHANGES ON WALLS ARE TO OCCUR AT INSIDE CORNERS. ALL DISCREPANCIES ARE TO BE REVIEWED WITH THE ARCHITECT.
- H. CONTRACTOR TO PROVIDE ALL NECESSARY TRANSITION STRIPS BETWEEN DISSIMILAR MATERIALS. TRANSITION STRIP MATERIALS ARE TO BE SUBMITTED FOR APPROVAL PRIOR TO ORDER AND INSTALLATION.
- K. WALL FINISHES MUST COMPLY WITH TABLE 803.9.

REFLECTED CEILING PLAN LEGEND



GRAPHIC SCALE



STATE EMPLOYEES' CREDIT UNION -
CHARLOTTE - ALBEMARLE RD.
REMOTE ATM ADDITIONS

PROJECT MANAGER: BS
CHECKED BY: DS
DRAWN BY: AA

FIELD SURVEY DATE:
DRAWING DATE: 02/07/2020
JOB #: NCE01.23