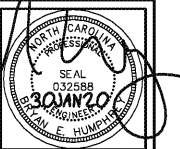


**FIRE ALARM NOTES**

- AUDIBLE SIGNAL SOUND LEVEL SHALL BE AT LEAST 15dBA ABOVE THE AVERAGE AMBIENT SOUND LEVEL OR 5dBA ABOVE THE MAXIMUM SOUND LEVEL HAVING A DURATION OF 60 SECONDS MINIMUM, WHICHEVER IS LOUDER, MEASURED FIVE FEET ABOVE THE FLOOR IN THE OCCUPIABLE AREA.
- THE TOTAL SOUND LEVEL PRODUCED BY COMBINING AMBIENT SOUND WITH ALL ALARM SIGNALS SHALL NOT EXCEED 120 dBA.
- "cd" RATING IS CALCULATED PER NFPA AND IT IS MINIMUM. PROVIDE MINIMUM OR HIGHER.
- SIGNALING LINE CIRCUITS (SLC) AND NOTIFICATION APPLIANCE CIRCUITS (NAC) SHALL BE CLASS 'B' STYLE AS PER 2013-NFPA 72.
- SMOKE DETECTORS SHOULD NOT BE LOCATED IN A DIRECT AIR-FLOW, NOR CLOSER THAN THREE FEET FROM AN AIR SUPPLY DIFFUSER.
- WALL MOUNTED NOTIFICATION APPLIANCES SHALL BE MOUNTED SUCH THAT THE ENTIRE LENS IS NOT LESS THAN 80 INCHES AND GREATER THAN 96 INCHES ABOVE THE FINISHED FLOOR.
- THE OPERABLE PART OF A MANUAL STATION SHALL BE NOT LESS THAN 42 INCHES AND NOT MORE THAN 48 INCHES FROM THE FINISHED FLOOR.
- SEE FIRE ALARM MATRIX FOR INPUT/OUTPUT FUNCTIONS.

NOTE: FIRE ALARM SYSTEM IS TO BE PROVIDED BY PINNACLE FIRE SYSTEMS, INC.  
 CONTACT:  
 RICK SHORES  
 PINNACLE FIRE SYSTEMS, INC.  
 1013 CLASSIC RD., APEX, NC 27529  
 DIRECT: 919 249 5177 | CELL: 919 795 6916 | MAIN: 919 367 0240



**EUBANKS  
 ENGINEERING PC  
 HUMPHREY**  
 102 Polite St., Suite 200  
 Greensboro, NC 27401  
 Phone: 336.379.0663  
 Fax: 336.379.0663

NC FIRM LICENSE: C-2272



T E A G U E  
 F R E Y A L D E N H O V E N  
 ARCHITECTS & PLANNERS, L.P.

100 NORTH GREENE STREET  
 SUITE 101  
 GREENSBORO  
 NORTH CAROLINA 27401  
 TEL. 336.273.0101  
 FAX. 336.273.0141

CANTERBURY SCHOOL  
 P. DAVID BROWN LIBRARY AND  
 ADMINISTRATION BUILDING  
 5400 OLD LAKE JEANETTE RD  
 GREENSBORO, NORTH CAROLINA

DATE: 30JAN20

EHEPC PROJECT #: 1969

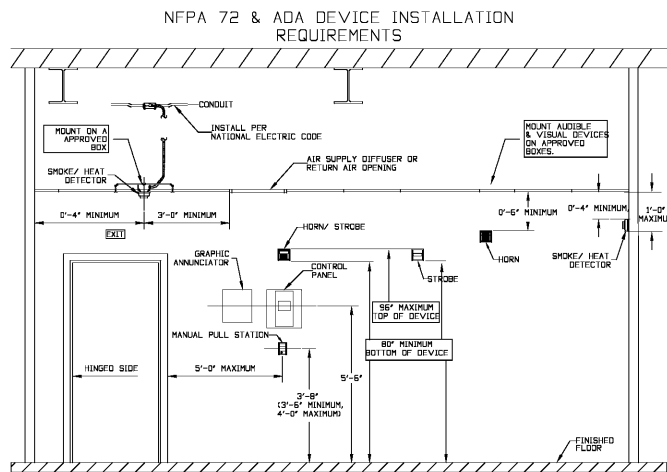
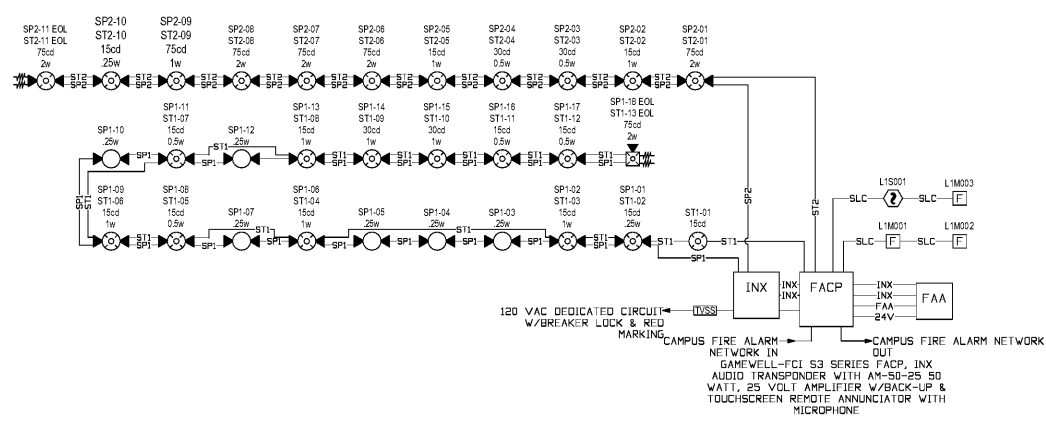
REVISIONS

SHEET

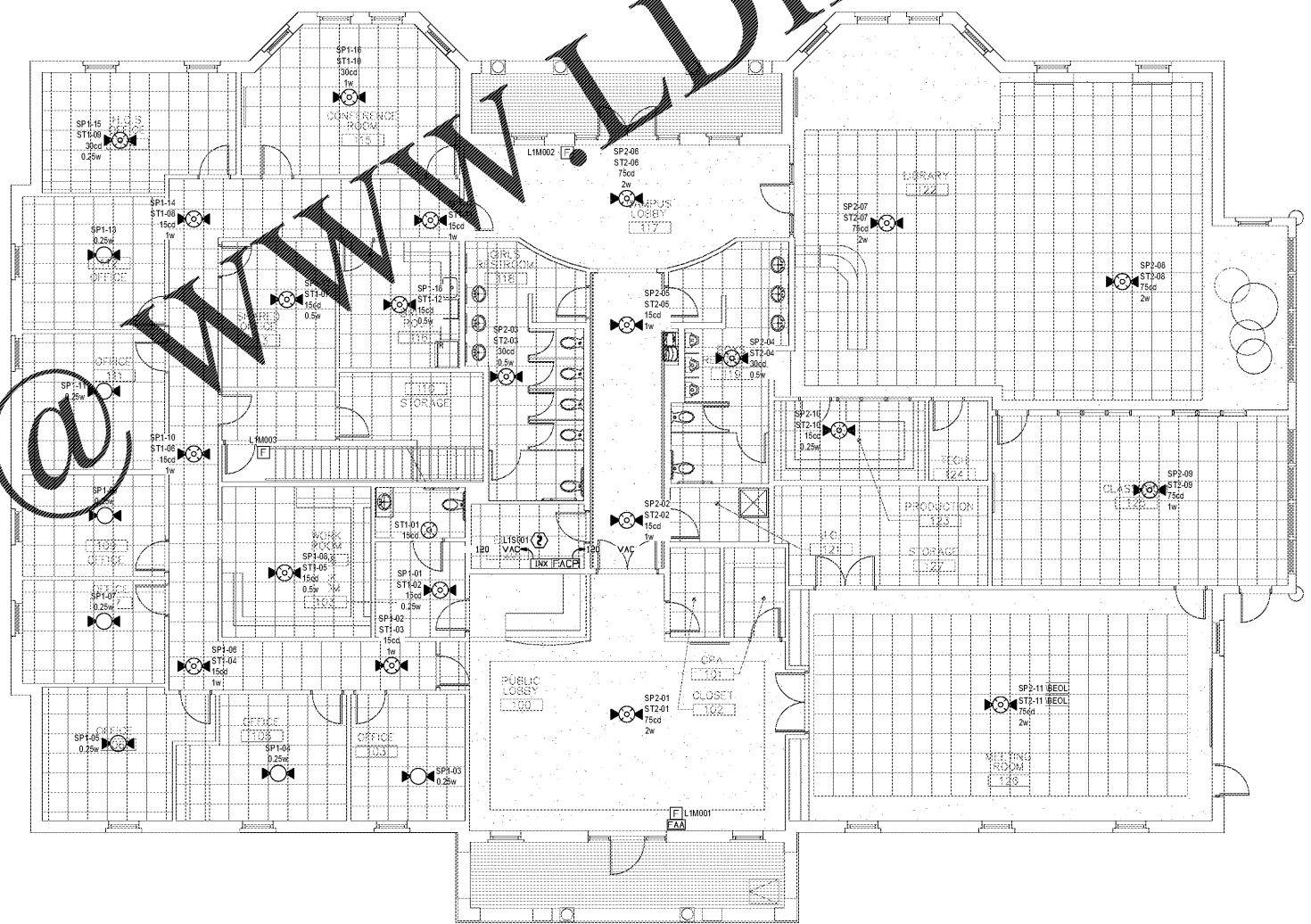
**FA-1**

OF 1

DEVICE LEGEND		
SYMBOL	DEVICE	BACK BOX
[FACP]	FIRE ALARM CONTROL PANEL W/DACT & BATTERIES MODEL: S3 SERIES	N/A
[INX]	AUDIO TRANSDUCER W/AMPLIFIERS & BATTERIES MODEL: INI-VGX, PM-9, AM-50-25	N/A
[FAA]	TOUCH SCREEN REMOTE ANNUNCIATOR W/MICROPHONE MODEL: LCD-SLP, INI-VGC-UTP, MIC	N/A
[?]	PHOTOELECTRIC SMOKE SENSOR W/BASE MODEL: ASD-PL3, B300-5	4" SQUARE, 1-1/2" DEEP W/SINGLE GANG RING
[P]	MANUAL PULL STATION MODEL: MS-7AF	4" SQUARE, 1-1/2" DEEP W/SINGLE GANG RING
[S]	SPEAKER, W/MULTI-CANDELA STROBE, CLG. MT., WHITE	4" SQUARE, 2-1/8" DEEP
[S]	MODEL: SPSCVL	
[S]	MULTI-CANDELA STROBE, CLG. MT., WHITE	4" SQUARE, 1-1/2" DEEP
[S]	MODEL: SCWL	
[S]	SPEAKER, W/MULTI-CANDELA STROBE, WALL MT., WHITE	4" SQUARE, 2-1/8" DEEP
[S]	MODEL: SPSWL	
[S]	SPEAKER, CEILING MOUNT, WHITE	4" SQUARE, 2-1/8" DEEP
[S]	MODEL: SPCWL	
[SS]	SURGE SUPPRESSOR, 120VAC SPD W/GAS TUBE MODEL: E-120V-GT	N/A
[R]	DENOTES END-OF-LINE RESISTOR	N/A



SYSTEM INPUTS	SYSTEM OUTPUTS																					
	A	B	C	D	E	F	G	H	I	J	K	L	M	N	O	P	Q	R	S	T	U	V
1. FIRE ALARM SYSTEM AC POWER FAILURE																						
2. FIRE ALARM SYSTEM LOW BATTERY																						
3. OPEN CIRCUIT																						
4. GROUND FAULT																						
5. NOTIFICATION APPLIANCE CIRCUIT SHORT																						
6. AMPLIFIER TROUBLE																						
7. MANUAL PULL STATION																						
8. SMOKE DETECTOR																						
9.																						
10.																						
11.																						



**FIRE ALARM DEVICE LAYOUT**

SCALE: 1/8" = 1'-0"