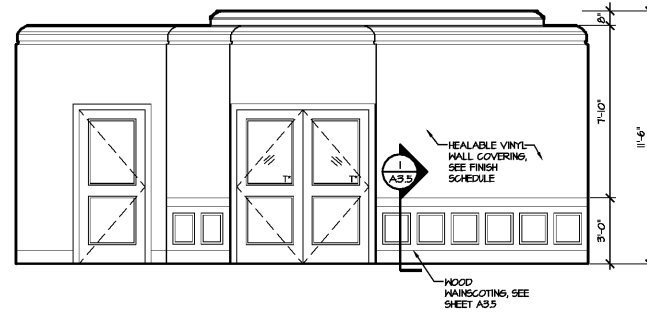
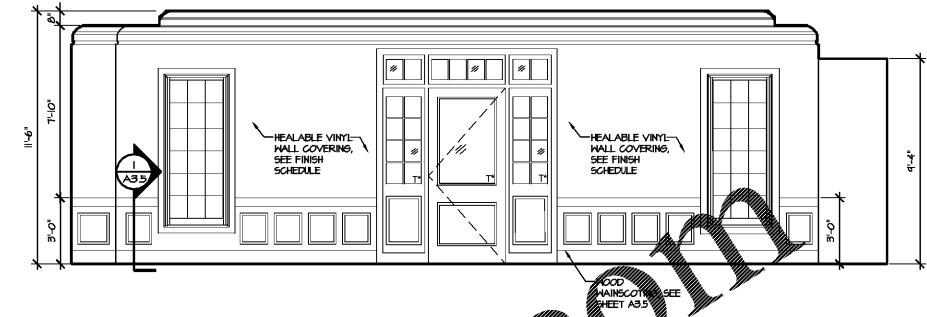


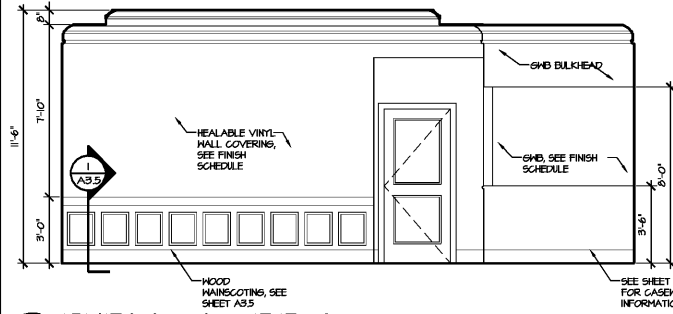
1 PUBLIC LOBBY  
A3.4 SCALE: 1/4" = 1'-0"



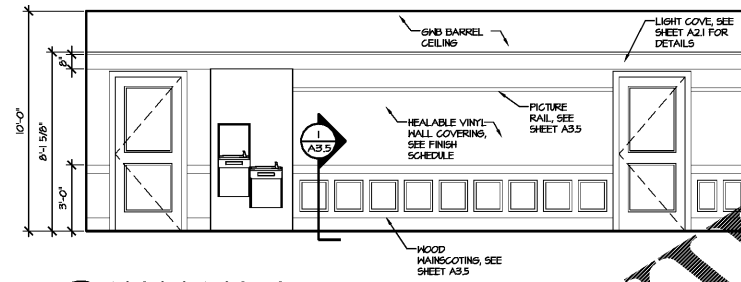
2 PUBLIC LOBBY  
A3.4 SCALE: 1/4" = 1'-0"



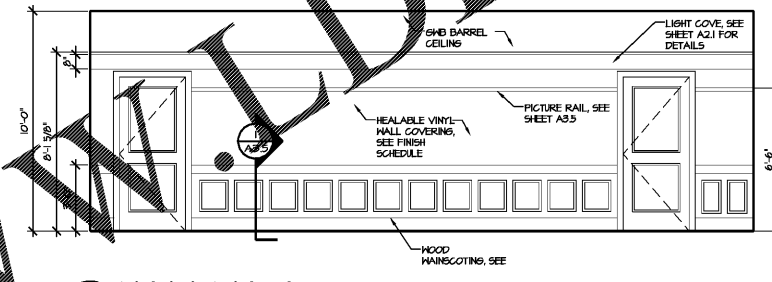
3 PUBLIC LOBBY  
A3.4 SCALE: 1/4" = 1'-0"



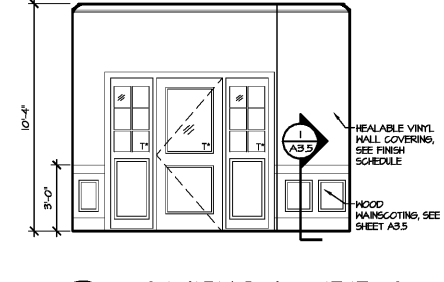
4 PUBLIC LOBBY  
A3.4 SCALE: 1/4" = 1'-0"



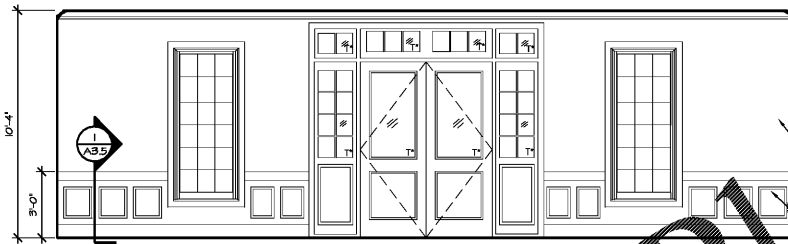
5 HALLWAY  
A3.4 SCALE: 1/4" = 1'-0"



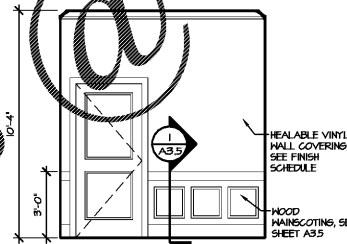
6 HALLWAY  
A3.4 SCALE: 1/4" = 1'-0"



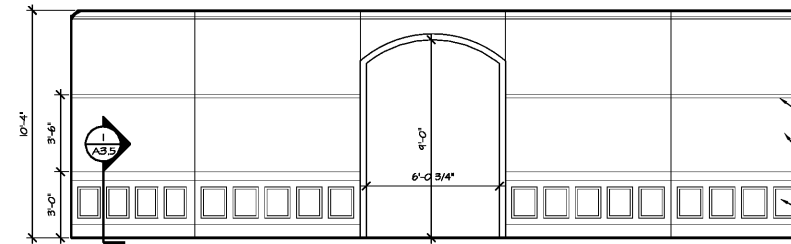
7 CAMPUS LOBBY  
A3.4 SCALE: 1/4" = 1'-0"



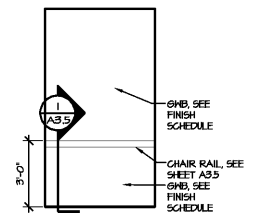
8 CAMPUS LOBBY  
A3.4 SCALE: 1/4" = 1'-0"



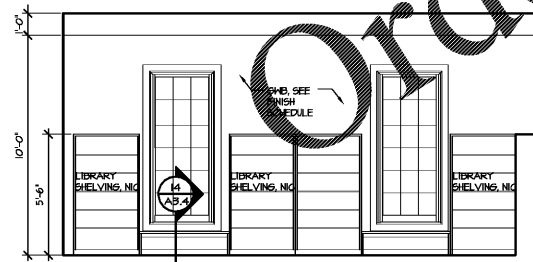
9 CAMPUS LOBBY  
A3.4 SCALE: 1/4" = 1'-0"



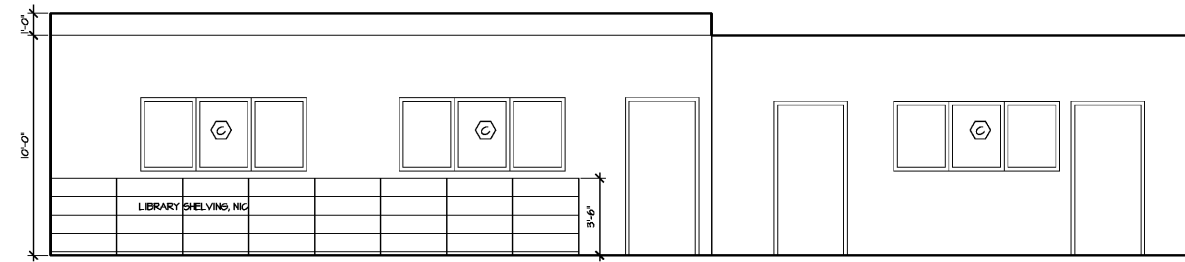
10 CAMPUS LOBBY  
A3.4 SCALE: 1/4" = 1'-0"



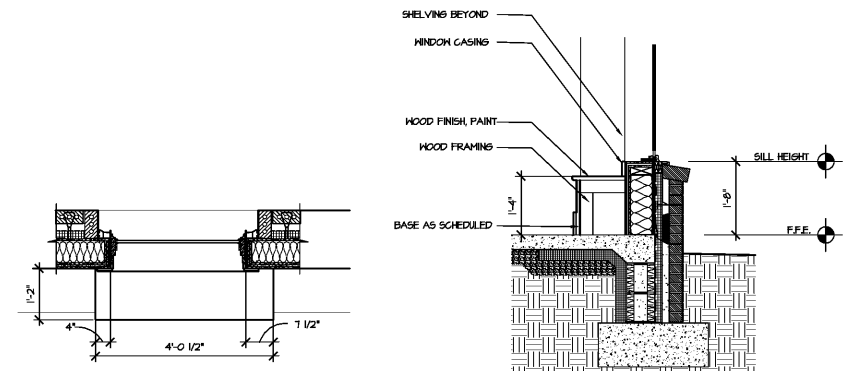
11 ADMIN. CORR.  
A3.4 SCALE: 1/4" = 1'-0"



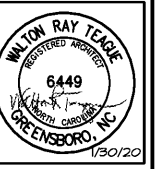
12 LIBRARY WINDOW SEAT  
A3.4 SCALE: 1/4" = 1'-0"



13 LIBRARY INTERIOR WINDOWS  
A3.4 SCALE: 1/4" = 1'-0"

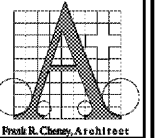


14 WINDOW SEAT PLAN & SECTION  
A3.4 SCALE: 1/2" = 1'-0"



TEAGUE  
FREYALDENHOVEN  
FREYALDENHOVEN  
ARCHITECTS & PLANNERS, LLP

300 NORTH GREENE STREET  
SUITE 285  
GREENSBORO  
NORTH CAROLINA 27401  
TEL. 336.273.0101  
FAX. 336.273.0141



CANTERBURY SCHOOL  
P. DAVID BROWN BUILDING  
5400 OLD LAKE JEANETTE RD  
GREENSBORO, NORTH CAROLINA

Canterbury  
SCHOOL

DATE  
JAN 30, 2020  
PROJECT #  
19117  
FILE #  
19117-A3.4  
REVISIONS

THIS DRAWING IS AN INSTRUMENT OF PROFESSIONAL SERVICE PREPARED BY THE ARCHITECTS & PLANNERS, LLP (TTP), AND IS THE PROPERTY OF TTP. ALLOCATION OF THIS DOCUMENT BY ANY PARTY OTHER THAN TTP IS A VIOLATION OF LAW THAT WILL BE PROSECUTED TO ITS FULLEST EXTENT. THIS DRAWING SHALL NOT BE USED FOR ANY WORK OTHER THAN THAT AUTHORIZED BY THE ARCHITECT. IT IS NOT TO BE COPIED OR REPRODUCED IN PART OR WHOLE.

SHEET  
A3.4