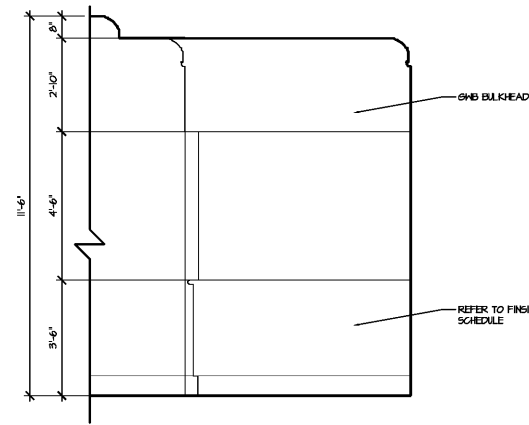
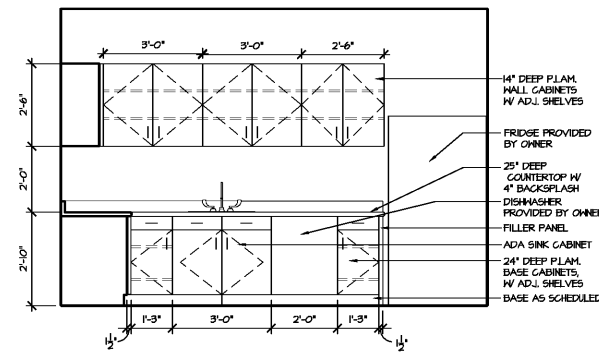


M- RECEPTION DESK 100



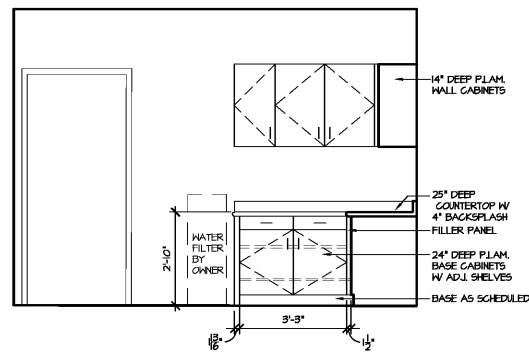
N- RECEPTION DESK 100



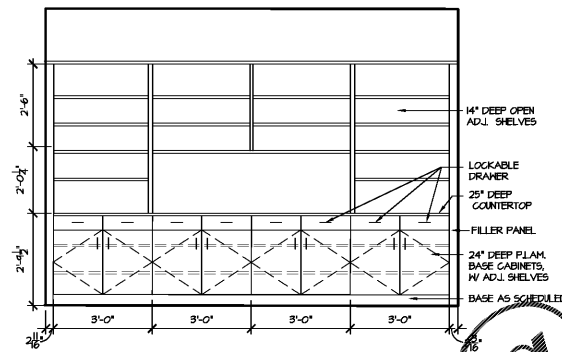
P- BREAK ROOM 116

CASEWORK GENERAL NOTES

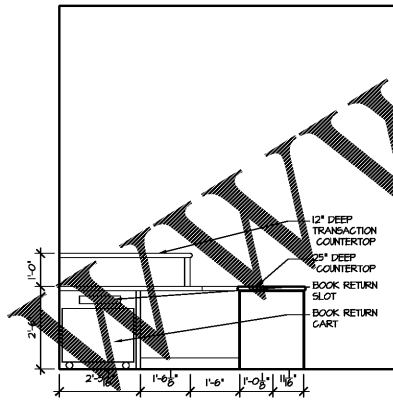
1. ALL BASE AND HALL CABINETS ARE STANDARD DEPTHS UNLESS OTHERWISE NOTED.
2. ALL HALL WIDTHS, CASEWORK AND COUNTERTOP HEIGHTS SHALL BE FIELD VERIFIED BY G.C. PRIOR TO FABRICATION AND INSTALLATION OF CASEWORK.
3. CASEWORK VENDOR TO PROVIDE FILLER PANELS, SUPPORTS, ETC. AS REQUIRED FOR PROPER INSTALLATION AND OPERATION OF ALL UNITS. FIELD VERIFY REQUIRED WIDTHS OF ALL FILLER PANELS SHOWN, AS REQUIRED.
4. FINISHES FOR BASE/HALL CABINETS AND COUNTERTOP/BACKSLASH MATERIAL SHALL BE AS INDICATED ON INTERIOR DRAWINGS.
5. G.C. SHALL COORDINATE ALL DEVICE LOCATIONS WITH CASEWORK INSTALLATION.
6. PROVIDE 4" RUBBER BASE AT ALL CASEWORK LOCATIONS (REFER TO INTERIORS DRAWINGS FOR TYPE), UNLESS OTHERWISE NOTED.
7. PROVIDE 4" TALL BACKSLASH AT BACK AND SIDES (WHERE APPLICABLE) OF COUNTERTOPS, AS SHOWN (N.G.). AT "T" LOCATIONS, CALK WITH A CLEAR OR MATCHING SILICONE SEALANT.
8. ALL SHELVING INDICATED IN BASE AND HALL CABINETS SHALL BE ADJUSTABLE, UNLESS OTHERWISE NOTED.
9. AT ALL LOCATIONS WHERE AREA OPEN UNDER COUNTERTOPS EXCEEDS 4'-0" IN UN-SUPPORTED WIDTH, PROVIDE ADEQUATELY SIZED HEAVY DUTY SUPPORT BRACKETS AT A MAXIMUM OF 32" C/C. REFER TO CASEWORK ELEVATIONS FOR LOCATIONS WHERE "CONCEALED" COUNTERTOP SUPPORT BRACKETS ARE TO BE PROVIDED.
10. AT ANY/ALL LOCATIONS WHERE ONE OR BOTH ENDS OF CASEWORK ARE EXPOSED (I.E. GAS BLOCK DOES NOT TERMINATE INTO A PERPENDICULAR WALL), CONTRACTOR SHALL PROVIDE FINISH END PANELS, AS REQUIRED OF SAME FINISH MATERIAL AS CASEWORK. REFER TO THE FLOOR PLAN FOR ADDITIONAL INFORMATION.
11. AT ANY/ALL OPEN KNEE SPACE LOCATIONS INDICATED, WHEN ELECTRICAL DRAWINGS INDICATE A BELOW-COUNTER OUTLET OR DATA JACK, THE CONTRACTOR SHALL PROVIDE A 2" DIA. COUNTERTOP GROMMET W/ COVER. EXACT LOCATIONS FOR EACH GROMMET WILL BE CONTAINED WITH THE FINER DURING CONSTRUCTION.
12. PROVIDE 3/16" (MIN) EDGE BANDING ON ALL PLASTIC LAMINATE GLASS DOORS, DRAWERS, AND COUNTERTOPS.
13. AT ALL DRAWER LOCATIONS INDICATED "FILE", G.C. TO PROVIDE A FILE HANGING SYSTEM WITHIN THE DRAWER UNIT.
14. AT ANY/ALL SINKS WITH NO BASE CABINETS (IF APPLICABLE), PROVIDE PIPE PROTECTION (EQUAL TO "LAV-GUARD") ON ALL EXPOSED PIPING.
15. PROVIDE LOCKING DRAWERS AND CABINETS AS INDICATED AND NOTED DURING SHOP DURING REVIEW.



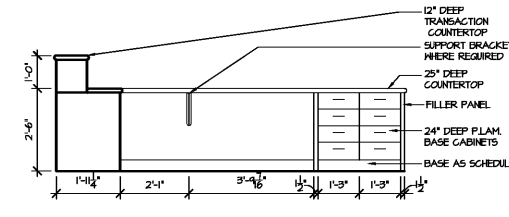
Q- BREAK ROOM 116



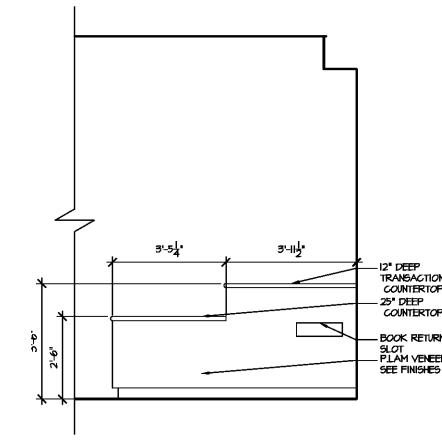
R- HEAD OF SCHOOL OFFICE 114



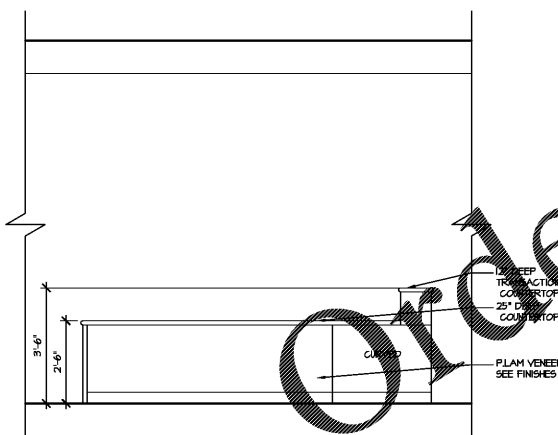
S- CIRCULATION DESK 122



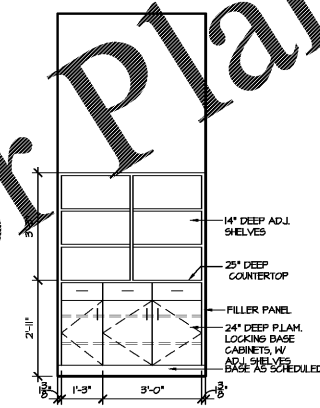
T- CIRCULATION DESK 122



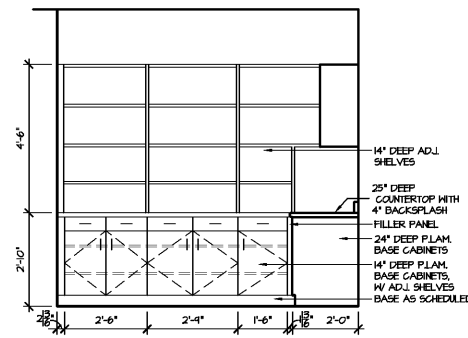
U- CIRCULATION DESK 122



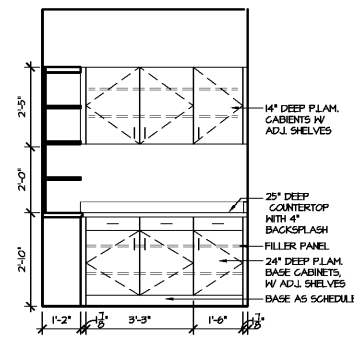
V- CIRCULATION DESK 122



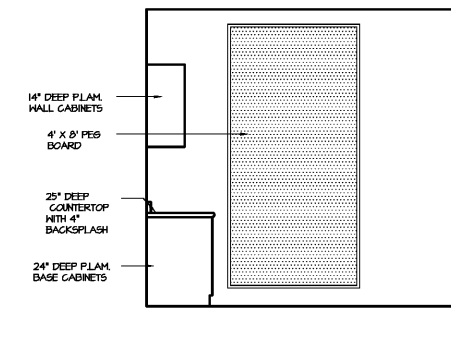
W- CIRCULATION DESK 122



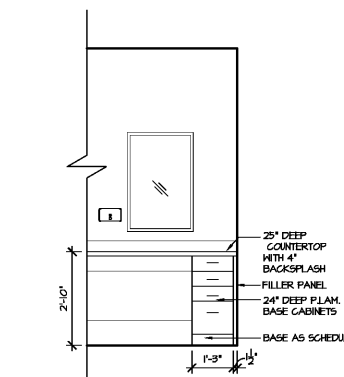
X- STORE 122



Y- STORE 122



Z- STORE 122

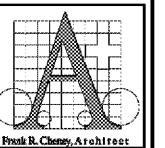


AA-GIRL'S RESTROOM 112



TEAGUE
FREYALDENHOVEN
FREYALDENHOVEN
ARCHITECTS & PLANNERS, LLP

300 NORTH GREENE STREET
SUITE 285
GREENSBORO
NORTH CAROLINA 27401
TEL. 336.273.0101
FAX. 336.273.0141



CANTERBURY SCHOOL
P. DAVID BROWN BUILDING
5400 OLD LAKE JEANETTE RD
GREENSBORO, NORTH CAROLINA



DATE	JAN 30, 2020
PROJECT #	19117
FILE #	19117-A3.2
REVISIONS	

THIS DRAWING IS AN INSTRUMENT OF PROFESSIONAL SERVICE PREPARED BY THE ARCHITECTS & PLANNERS, LLP (TTP), AND IS THE PROPERTY OF TTP. ALLOCATION OF THIS DOCUMENT BY ANY PARTY OTHER THAN TTP IS A VIOLATION OF LAW THAT WILL BE PROSECUTED TO ITS FULLEST EXTENT. THIS DRAWING SHALL NOT BE USED FOR ANY WORK OTHER THAN THAT AUTHORIZED BY THE ARCHITECT. IT IS NOT TO BE COPIED OR REPRODUCED IN PART OR WHOLE.