

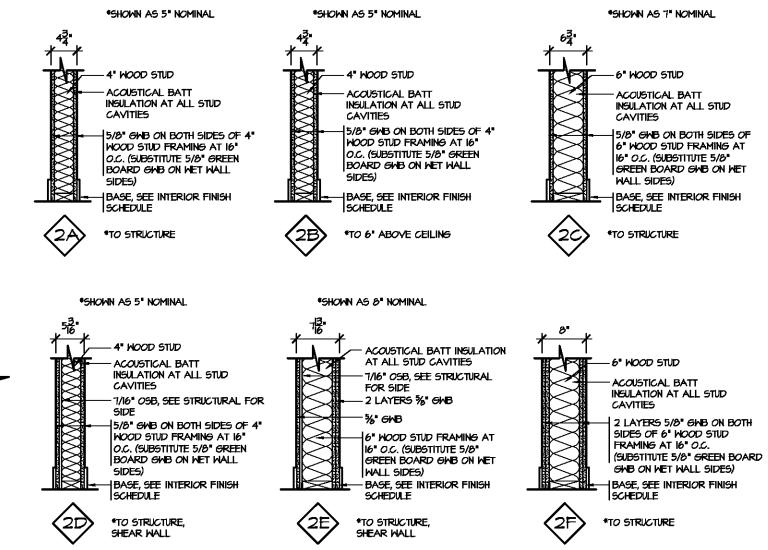
GENERAL NOTES

- DIMENSIONS ARE TAKEN FROM FINISH FACE OF EXTERIOR WALL OR NOMINAL FINISH FACE OF INTERIOR PARTITION.
- DIMENSIONAL CONFLICTS BETWEEN PARTITION TYPES AND THE ARCHITECTURAL FLOOR PLAN SHALL BE BROUGHT TO THE ATTENTION OF THE ARCHITECT.
- CONTRACTOR SHALL COORDINATE MECHANICAL DUCTWORK PRIOR TO FABRICATION OF PARTITION WALLS.
- IF CONDITIONS OCCUR WHERE A WALL IS UNABLE TO GO STRAIGHT UP TO STRUCTURE DUE TO PIPING, DUCTWORK, ETC., THE PARTITION (GYPSUM BOARD AND FRAMING) MAY JOG HORIZONTALLY ABOVE THE GELINGS TO AVOID THE PROBLEM.
- WHERE STUDS EXTEND TO STRUCTURE AND GYPSUM HALL BOARD AND SOUND ATTENUATION BLANKETS EXTEND JUST ABOVE THE FINISH CEILING, CAP OFF PARTITION FINISHES WITH A RUNNER CHANNEL WHEN CEILING FLENUM IS USED AS A RETURN AIR FLENUM.
- TILE BACKER BOARD SHALL BE USED IN ALL LOCATIONS TO RECEIVE TILE FINISHES. REFER TO FINISH SCHEDULE AND INTERIOR ELEVATIONS FOR LOCATIONS.
- LOCATE DOOR OPENINGS 4" FROM NEAREST PERPENDICULAR WALL.
- INSTALL BLOCKING IN PARTITIONS FOR CASEWORK, HALL MOUNTED EQUIPMENT.
- AT ALL PARTITIONS THE CONTRACTOR IS TO MAINTAIN THE FIRE-RESISTIVE INTEGRITY.
- REFER TO UNDERWRITERS LABORATORIES, INC. FIRE RESISTIVE VOLUMES. CHECK CONDITION FOR SPECIFIC CONSTRUCTION REQUIREMENTS OF UL LISTED ASSEMBLIES.
- REFER TO MECHANICAL, ELECTRICAL, AND PLUMBING DRAWINGS FOR TYPICAL UL LISTED PENETRATIONS THROUGH FIRE-RATED ASSEMBLIES. CONTRACTOR SHALL BE RESPONSIBLE FOR PROVIDING APPROPRIATE PROJECT-SPECIFIC UL LISTED ASSEMBLIES FOR PENETRATIONS.
- ALL PIPE AND CONDUIT PENETRATIONS THRU FIRE-RATED PARTITION WALLS, FLOORS, ETC., SHALL BE SEALED WITH A RESPECTIVELY FIRE RATED BARRIER PENETRATION SEAL SYSTEM BY 3M OR UL APPROVED EQUAL.
- SUBSTITUTE 3/8" MOISTURE RESISTANT GHB ON MET HALL SIDES OF PARTITION WALLS (4FT HIDE CENTERED ON FIXTURE UP TO 8 FT HIGH AFF.)

PLAN LEGEND

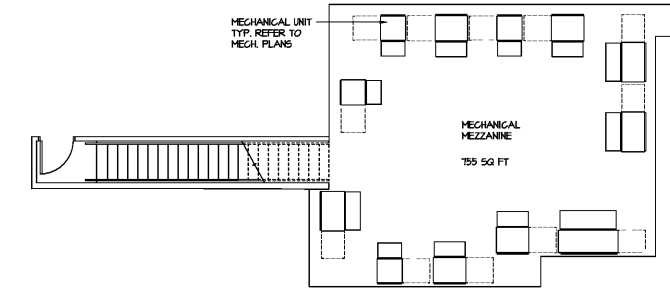
ROOM NAME	ROOM #	ROOM TAG
DOOR IDENTIFICATION TAG		
WINDOW IDENTIFICATION TAG		
CASEWORK/INTERIOR ELEVATION TAG		
PARTITION TYPE		
MEZZANINE ABOVE		
PROVIDE BLOCKING FOR HALL MOUNTED MAGNETIC HOLD OPEN		

- NOTES:**
- ALL PARTITIONS ARE TYPE 2B UNLESS OTHERWISE SHOWN.
 - AT ALL PARTITIONS PROVIDE 4" OF ACOUSTICAL BATT, ON EITHER SIDE OF THE WALL ABOVE THE CEILING.



2 PARTITION TYPES

SCALE: 1/2" = 1'-0"



3 MEZZANINE PLAN

SCALE: 1/8" = 1'-0"

NOTE: REFER TO SECTION FOR REQUIRED HALL TRIM ENCLOSURE

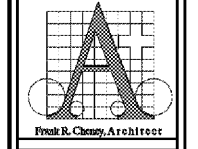
1 FIRST FLOOR

SCALE: 1/8" = 1'-0"

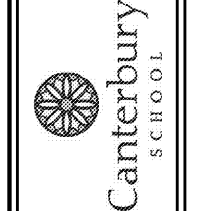


T E A G U E
FREYALDENHOVEN
FREYALDENHOVEN
 ARCHITECTS & PLANNERS, LLP

300 NORTH GREENE STREET
 SUITE 285
 GREENSBORO
 NORTH CAROLINA 27401
 TEL. 336.273.0101
 FAX. 336.273.0141



CANTERBURY SCHOOL
P. DAVID BROWN BUILDING
5400 OLD LAKE JEANETTE RD
 GREENSBORO, NORTH CAROLINA



DATE: JAN 30, 2020
 PROJECT #: 19117
 FILE #: 19117-A1-1
 REVISIONS:

THIS DRAWING IS AN INSTRUMENT OF PROFESSIONAL SERVICE PREPARED BY THE ARCHITECTS & PLANNERS, LLP (TTP) AND IS THE PROPERTY OF TTP. ALTERATION OF THIS DOCUMENT BY ANY PARTY OTHER THAN TTP IS A VIOLATION OF LAW THAT WILL BE PROSECUTED TO ITS FULLEST EXTENT. THIS DRAWING SHALL NOT BE USED FOR ANY WORK OTHER THAN THAT AUTHORIZED BY THE ARCHITECT. IT IS NOT TO BE COPIED OR REPRODUCED IN PART OR WHOLE.

SHEET

A1.1