

ALL PANELBOARDS, TRANSFORMERS, TRANSFER SWITCH KIT AND DISCONNECTS WILL BE SUPPLIED BY THE OWNER (O'REILLY). ELECTRICAL GEAR SHALL BE DIRECT ORDERED AND/OR RELEASED FROM THE LISTED ELECTRICAL EQUIPMENT DISTRIBUTOR. SEE "ELECTRIC SERVICE RESPONSIBILITIES" FOR ADDITIONAL CLARIFICATION.

GRAYBAR ELECTRIC CO. INC.
11885 LACKLAND ROAD
ST. LOUIS, MO. 63146

GRAYBAR OREILLY TEAM
EMAIL: oreilly@graybar.com
TOLL FREE: (314) 573-2080

MP		PANELBOARD SCHEDULE	
MAINS:	400A MAIN LUGS ONLY	VOLTAGE:	208
TYPE:	SQUARE D, NQ	PHASE:	3φ, 4W
ACCESSORIES:	1. EQUIPMENT GROUND BAR 2. ISOLATED GROUND BAR 3. * "SO. D" #001PA - WITH LOCKABLE CLIPS 4. * MUST BE TYPE "HACR" BREAKER 5. FEED THRU LUGS		
SCCR:	22K AIC	SPACE(S):	42
LOAD DESCRIPTION	(KVA)	A(KVA)	B(KVA)

CKT	BRK	WIRE	LOAD DESCRIPTION	(KVA)	A(KVA)	B(KVA)	C(KVA)	(KVA)	LOAD DESCRIPTION	WIRE	CKT	BRK	CKT
1	20A/1P	#12s	LIGHTING/EXHAUST FAN	0.51	4.44			3.93					
3	20A/1P	#12s	LIGHTING	1.10		5.03		3.93					
5	20A/1P	#12s	LIGHTING	1.19			5.12	3.93					
7	20A/1P	#12s	LIGHTING	1.24	5.17			3.93					
9	20A/1P	#12s	LIGHTING	1.11		5.04		3.93					
11	20A/1P	#12s	LIGHTING	0.93			4.86	3.93					
13	20A/1P	#12s	LIGHTING	0.66	3.44			2.78					
15			SPACE	0		2.78		2.78					
17			SPACE	0			2.78	2.78					
19			SPACE	0	0.00			0					
21			SPACE	0		0.00		0					
23	20A/1P	#12s	BUILDING LIGHTING	0.28			0.28	0					
25	20A/1P	#12s	SITE LIGHTING	0.30	0.30			0					
27	20A/1P	#12s	SITE LIGHTING	0.15		0.15		0					
29	20A/1P	#12s	SITE SIGN	1.30			1.30	0					
31	20A/1P	#12s	SITE SIGN	1.30	1.30			0					
33	20A/1P	#12s	LED SIGN BUILDING	1.20		1.20		0					
35			SPACE	0.03			0.03	0					
37	20A/3P	#12s	GRIDPOINT EC-1000	0.03	0.03			0					
39			SPACE	0.03		0.03		0					
41	20A/1P	#12s	XFORMER J-BOX	0.60			1.20	0.60					

TOTAL PHASE A (KVA)	TOTAL PHASE B (KVA)	TOTAL PHASE C (KVA)	TOTAL CONNECTED LOAD (KVA)	TOTAL AMPS
14.68	14.23	15.57	44.48	123.47
LIGHTING 6.74	EXTERIOR LIGHTING 4.53	TOTAL LIGHTING 11.27	HVAC 31.92	RECEPTACLES 12.57
			MISCELLANEOUS 14.58	WATER HEATER 1.65
				TOTAL CONNECT AMPS = 203.41

E		TRANSFER SWITCH SCHEDULE	
POSITION	CIRCUIT BREAKER	LOAD DESCRIPTION	(KVA) BREAKER
A	20A/1P	OFFICE COMPUTER	0.38 PLP-36
B	20A/1P	COUNTER RECEPTACLES	0.38 PLP-34
C	20A/1P	PHONER	0.50 PLP-38
D	20A/1P	TELEPHONE EQUIPMENT/SECURITY	0.90 PLP-40
E	20A/1P	LIGHTING OFFICE/BATHROOMS (100% ON)	0.61 MP-1
F	20A/1P	LIGHTING SECURITY (100% ON)	0.68 MP-13
G	20A/1P	LIGHTING HARD PARTS (DIMMED TO 50% ON)	0.53 MP-3
H	20A/1P	LIGHTING HARD PARTS (DIMMED TO 50% ON)	0.60 MP-5
I	20A/1P	INSTALLER (ISOLATED GRD RECEPTACLE)	0.38 PLP-17
J	20A/1P	INSTALLER (RECEPTACLE)	0.18 PLP-19
GENERATOR (6,000 WATTS) RATED, MAX KVA=5.0 LOAD			4.98 TOTAL

NOTE: ALL BRANCH CIRCUITS SHALL HAVE AN EQUIPMENT GROUNDING CONDUCTOR ROUTED WITH THE CIRCUIT CONDUCTORS. THIS MEANS ALL CONDUITS MUST HAVE A GREEN WIRE INSTALLED IN THEM AND SIZED IN ACCORDANCE WITH TABLE 250.122 OF THE N.E.C.

NOTE: DOT-HATCH REPRESENTS CIRCUITS THAT ARE ASSOCIATED WITH OPTIONAL STANDBY GENERATOR CONTROL.

WIRING & LABELING OF EXIT & EMERGENCY LIGHT CIRCUITS

- SEE DETAIL 1/E1 FOR WIRING OF EXIT & EMERGENCY LIGHTS ON THESE CIRCUITS.
- ALL EXIT & EMERGENCY LIGHTING CIRCUITS SHALL BE LABELED BY THE CONTRACTOR ON THE "PANEL DIRECTORY", (SPEC: NEPA 70.408.4 & 700.12.)

EQUIPMENT LABELS CHART

EQUIPMENT	LABELS						
	SERVICE DISCONNECT	OPTIONAL STANDBY SOURCE	GENERATOR POWER INLET	SERIES RATING	AVAILABLE FAULT CURRENT	CURRENT	
DISCONNECT	X	X					
GENERATOR POWER INLET			X				
MP							
PLP							
E							
CT CABINET							

GENERATOR POWER INLET LABEL

PERMANENT LABEL SHALL BE 2 x 3 IN SIZE AND SHALL BE BLUE LETTERING ON A CONTRASTING BACKGROUND. LABEL TO BE PLACED 6 INCHES ABOVE GENERATOR RECEPTACLE.

WARNING:
FOR CONNECTION OF A NONSEPARATELY DERIVED (FLOATING NEUTRAL) SYSTEM ONLY (MAX. 6,000 WATT GENERATOR)

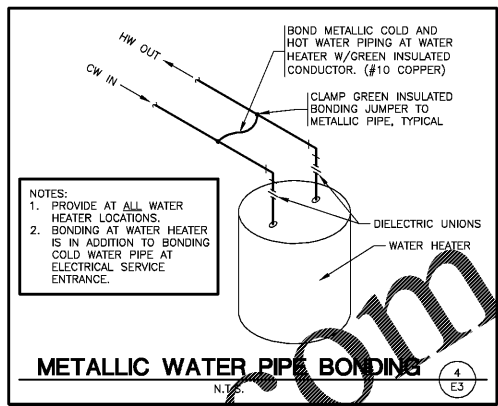
OPTIONAL STANDBY SOURCE LABEL

PERMANENT LABEL SHALL BE 2 x 3 IN SIZE AND SHALL BE BLUE LETTERING ON A CONTRASTING BACKGROUND. LABEL TO BE PLACED ON DISCONNECT DOOR.

CAUTION
TWO SOURCES OF SUPPLY
STANDBY POWER SOURCE (PORTABLE 6kw GENERATOR) LOCATION: OVERHEAD DOOR.

SERVICE DISCONNECT LABEL

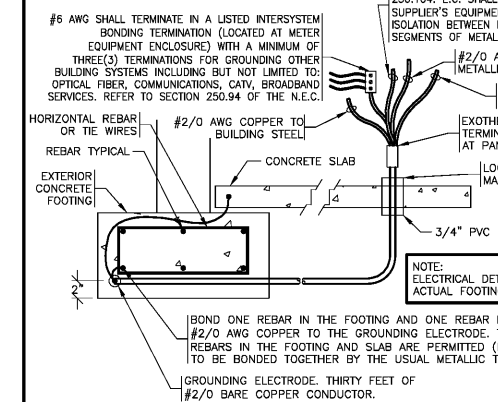
THE SERVICE DISCONNECT MEANS SHALL BE PROPERLY MARKED "SERVICE DISCONNECT". REFER TO SPEC SECTION 26 00 20 FOR FURTHER IDENTIFICATION PLATE REQUIREMENTS.



NOTES:
1. PROVIDE AT ALL WATER HEATER LOCATIONS.
2. BONDING AT WATER HEATER IS IN ADDITION TO BONDING COLD WATER PIPE AT ELECTRICAL SERVICE ENTRANCE.

BONDING REQUIREMENTS

NOTE:
1. BOND ALL NONCURRENT CARRYING METAL PARTS OF SERVICE EQUIPMENT (INCLUDING METER ENCLOSURE) TO GROUNDING ELECTRODE AS REQUIRED, PER NEC 250-92.
2. THE GROUNDED NEUTRAL CONDUCTOR SHALL BE RUN TO AND BONDED TO EACH SERVICE DISCONNECTING MEANS ENCLOSURE IN ACCORDANCE WITH NEC 250-24c.
3. BONDING OF OTHER ENCLOSURES SHALL BE IN ACCORDANCE WITH NEC 250-96.

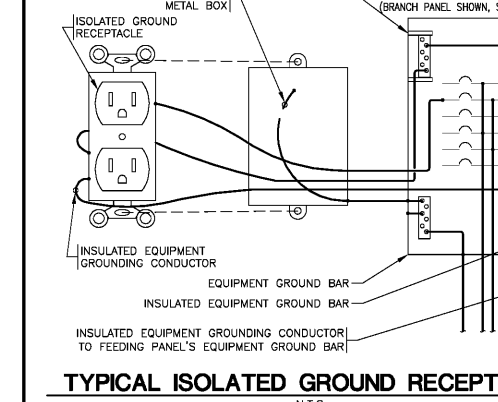


NOTE:
ELECTRICAL DETAIL IS FOR CONCEPT. ACTUAL FOOTING TYPE MAY VARY.

NOTE:
GROUNDING ELECTRODE TEST MEASURE AND RECORD GROUND RESISTANCE FROM SYSTEM NEUTRAL CONNECTION AT SERVICE ENTRANCE TO CONVENIENT GROUND REFERENCE POINT USING SUITABLE GROUND TESTING EQUIPMENT. MAXIMUM ACCEPTABLE RESISTANCE: 10 OHMS. WHEN RESISTANCE EXCEEDS 10 OHMS; DRIVE AND BOND (#6 COPPER MINIMUM) ANOTHER GROUND ROD, ONE GROUND ROD LENGTH AWAY (MINIMUM 6'-0") AND REPEAT TEST. CONTINUE THIS PROCESS UNTIL RESISTANCE IS BELOW 10 OHMS.

GROUNDING ELECTRODE (UFER TYPE) & BONDING JUMPER(S) DETAIL

N.T.S.

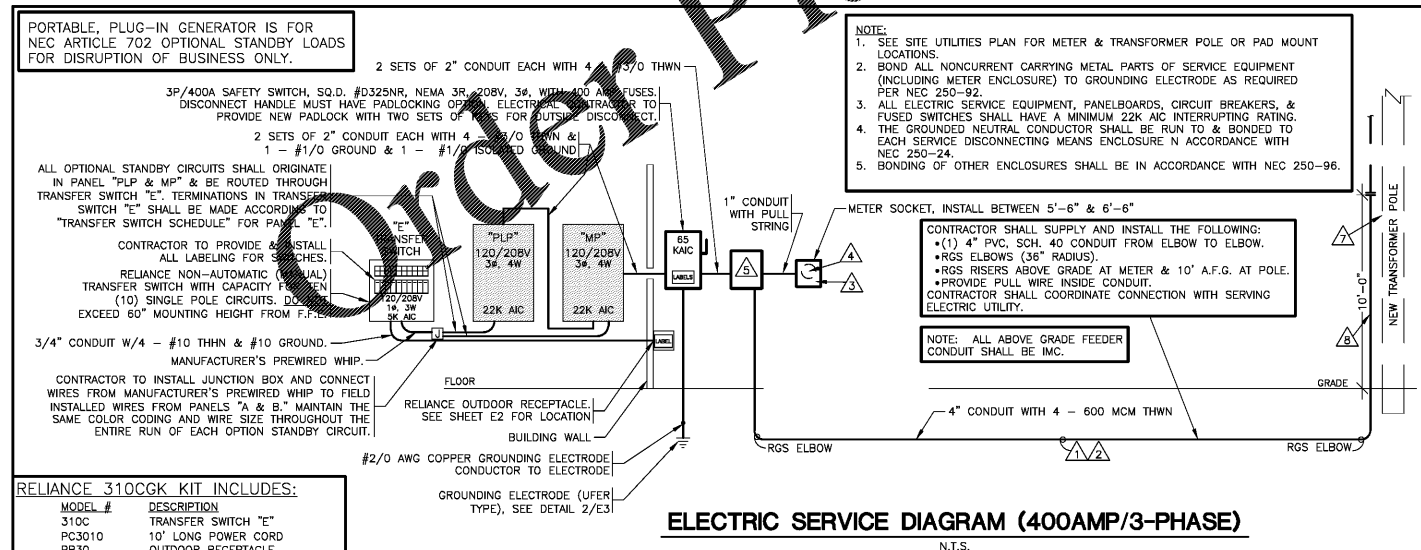


TYPICAL ISOLATED GROUND RECEPTACLE

N.T.S.

ELECTRIC SERVICE RESPONSIBILITIES

SEE SITE PLAN FOR UTILITY COMPANY CONTACT.					
ITEM NO.	DESCRIPTION (IF APPLICABLE)	FURNISHED BY		INSTALLED BY	
		UTILITY CO.	CONTRACTOR	UTILITY CO.	CONTRACTOR
1	SERVICE LATERAL		X		X
2	SERVICE LATERAL RACEWAY		X		X
3	METER BASE	X			X
4	METER	X		X	
5	CT CABINET		X		X
6	OH SERVICE RISER @ BUILDING		X		X
7	TRANSFORMER POLE	X		X	
8	SERVICE RISER @ POLE		X		X
9	TRANSFORMER PAD		X		X
10	PAD MOUNT TRANSFORMER		X		X



RELIANCE 310CGK KIT INCLUDES:
MODEL # DESCRIPTION
310C TRANSFER SWITCH "E"
PC3010 10' LONG POWER CORD
PB30 OUTDOOR RECEPTACLE

ELECTRIC SERVICE DIAGRAM (400AMP/3-PHASE)

N.T.S.

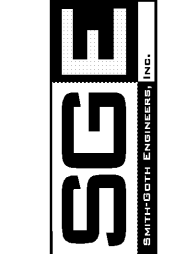


SHEETS BEARING THIS SEAL ARE AUTHENTICATED. RESPONSIBILITY FOR ALL OTHER PLANS, SPECIFICATIONS OR INSTRUMENTS ARE DISCLAIMED.

O'Reilly AUTO PARTS
CORPORATE OFFICES
233 SOUTH PATTERSON
SPRINGFIELD, MISSOURI 65802
(417) 862-2674 TELEPHONE

PROJECT: NEW O'REILLY AUTO PARTS STORE
6472 GA-42
DEX, GEORGIA
ELECTRICAL SCHEDULES

3885 S. JEFFERSON AVE.
SPRINGFIELD, MO 65807
P: 417-882-2200
F: 417-882-1188
www.oreillyauto.com



DRAWN BY: LHT
CHECKED BY: ALT/BLC
DATE: 1/8/20
REVISION:
PROJECT NUMBER: REX
SHEET NUMBER: E3

REPRODUCTION PROHIBITED WITHOUT THE EXPRESSED WRITTEN CONSENT OF THE DESIGN PROFESSIONAL.