

EXTERIOR LIGHT FIXTURE SCHEDULE													
ALL ITEMS LISTED ON THE "LIGHT FIXTURE SCHEDULE" WILL BE SUPPLIED BY THE OWNER (O'REILLY). ITEMS SHALL BE DIRECT ORDERED AND OR RELEASED FROM THE LISTED ELECTRICAL EQUIPMENT DISTRIBUTOR:													
GRAYBAR ELECTRIC CO. INC. 11885 LACKLAND ROAD ST. LOUIS, MO 63146													
GRAYBAR O'REILLY TEAM EMAIL: oreilly@graybar.com TOLL FREE: (314) 573-2080													
MARK	MFR.	CATALOG NUMBER	SUPPLY VOLTAGE	FINISH	MOUNTING			LAMPS			WATTAGE	NOTES	FIXTURE QUANTITY
					SURFACE WALL	SURF. CEILING	OTHER	FLUORESCENT	LED	OTHER			
<b>LED EXTERIOR LIGHTS</b>													
WS1	LSI	XWM-FT-LED-08L-50-UE-BRZ NO SUBSTITUTIONS	120	DARK BRONZE	X			X			59	FULL CUT-OFF, BUG RATING B1-U0-G1. ARCHITECTURAL ELEVATIONS SHOW DIMENSIONED LOCATIONS.	5
<b>LED POLE LIGHTS</b>													
P2	LSI	MRM-LED-9L-SIL-3-UNV-DIM-50-80CRI-BRZ-IL	120	DARK BRONZE	X	X	X	X	X	X	1	22.5' POLE LENGTH, ADVANCE BALLASTS, FULL CUT-OFF, NO SUBSTITUTIONS, ANCHOR BOLTS W/HARDWARE & TEMPLATE, WITH INTERNAL LOUVER HOUSE SIDE SHIELD, BUG RATING B1-U0-G3	3
	LSI	5SQB3-S11G-22.5'-S-BRZ-LAB-5BC											
P3	LSI	MRM-LED-18L-SIL-5W-UNV-DIM-50-80CRI-BRZ-IL	120	DARK BRONZE	X	X	X	X	X	X	1	22.5' POLE LENGTH, ADVANCE BALLASTS, FULL CUT-OFF, NO SUBSTITUTIONS, ANCHOR BOLTS W/HARDWARE & TEMPLATE, WITH INTERNAL LOUVER HOUSE SIDE SHIELD, BUG RATING B2-U0-G2	1
	LSI	5SQB3-S11G-22.5'-S-BRZ-LAB-5BC											
FIXTURE QUANTITY TO BE VERIFIED WITH SITE PLAN QUANTITY													

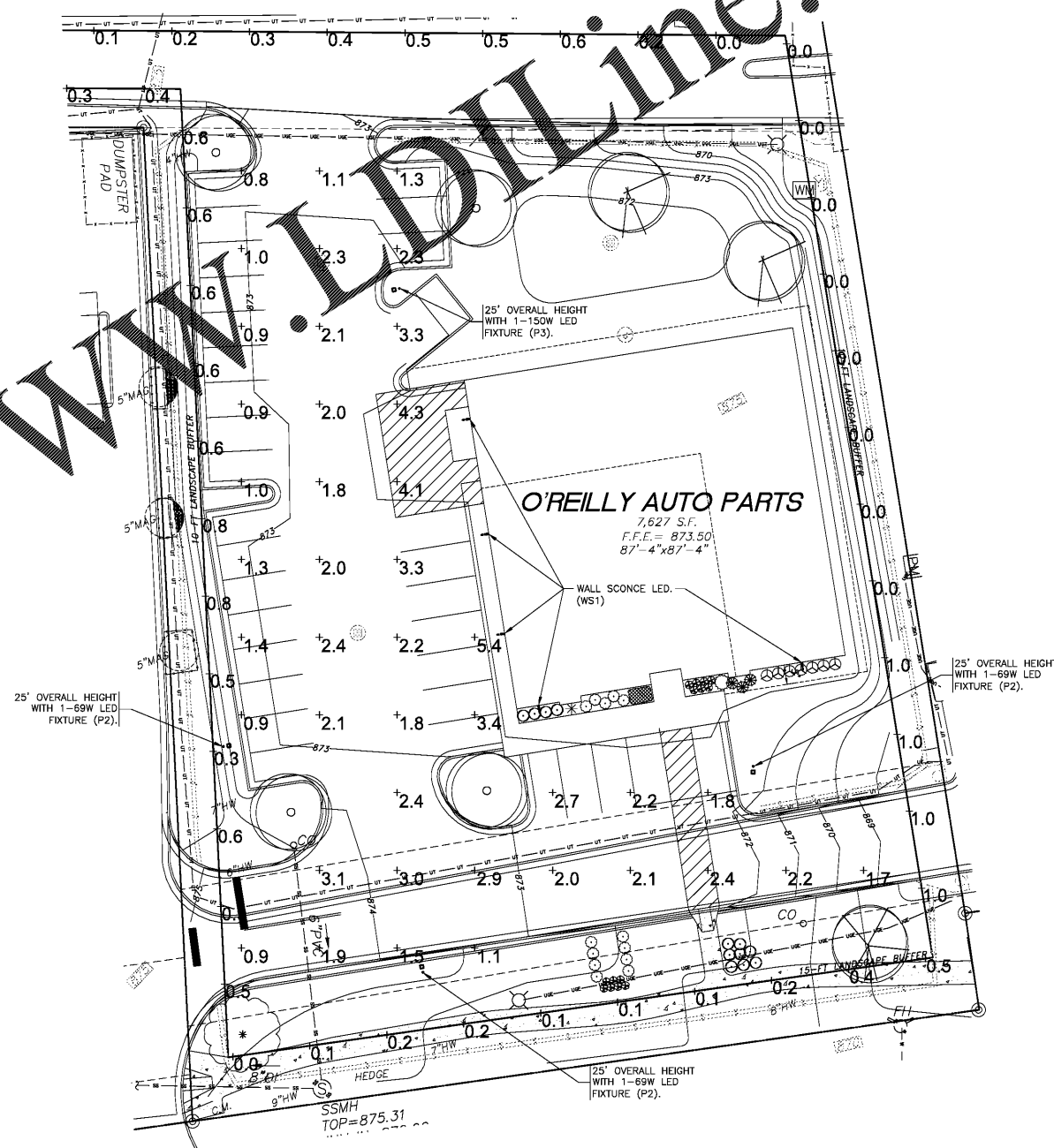
**AUTOMATIC LIGHTING CONTROL**

COMPLIANCE WITH ENERGY CODE IS ACHIEVED BY:

- ONCE THE EMS HAS BEEN PROGRAMMED, THE INTERIOR AND EXTERIOR LIGHTS WILL TURN ON AND OFF USING THE FOLLOWING LOGIC: SEE EM SHEETS.
  - INTERIOR WORK LIGHTS WILL TURN ON WITH FIRST MOTION IN THE STORE AND WILL TURN OFF 15 MINUTES AFTER LAST MOTION ONCE THE STORE IS CLOSED.
  - INTERIOR SALES LIGHTS WILL TURN ON AT STORE OPENING AND TURN OFF 15 MINUTES AFTER STORE CLOSING.
  - EXTERIOR SIGN LIGHTS WILL TURN ON WHEN IT IS DARK ENOUGH OUTSIDE ANYTIME DURING STORE HOURS, AND WILL TURN OFF AT STORE CLOSING.
  - EXTERIOR SITE LIGHTS WILL TURN ON WHEN IT IS DARK ENOUGH OUTSIDE AND IT IS WITHIN STORE HOURS OR THERE IS MOTION IN THE STORE. THEY WILL TURN OFF 30 MINUTES AFTER LAST MOTION ONCE THE STORE IS CLOSED.
- RESTROOMS AND OFFICES: ALL LIGHTING IN THESE AREAS ARE CONTROLLED BY OCCUPANT-SENSING DEVICES.

BACKLIGHT-UPLIGHT-GLARE (BUG) RATING / FULL CUTOFF															
ALL "LSI MRM" & "XWM" LED FIXTURES HAVE ZERO UPLIGHT AND ARE CONSIDERED FULL CUT OFF AND DARKSKY COMPLIANT. THE DELIVERED LUMEN CHART BELOW APPLIES TO "LSI XWM" FIXTURES AND CONFIRMS THAT IN EVERY CONFIGURATION THE FIXTURE PRODUCES ZERO UPLIGHT (U = 0). BUG RATING CHART FOR "LSI MRM" FIXTURES IS FOUND ON CORRESPONDING "SP" SHEETS.															
DELIVERED LUMENS*															
Lumen Package	Description	CRI	2700K			3000K			4000K			5000K			Workage
			Delivered Lumens	Efficiency	BUG Rating	Delivered Lumens	Efficiency	BUG Rating	Delivered Lumens	Efficiency	BUG Rating	Delivered Lumens	Efficiency	BUG Rating	
00L	2	70	2732	123	B1-U0-G1	2632	125	B1-U0-G1	3098	137	B1-U0-G1	3698	157	B1-U0-G1	22.8
	3	70	2792	122	B1-U0-G1	2692	127	B1-U0-G1	3144	139	B1-U0-G1	3744	159	B1-U0-G1	
	4	70	2752	123	B1-U0-G1	2652	128	B1-U0-G1	3100	137	B1-U0-G1	3700	157	B1-U0-G1	
	5	70	2812	122	B1-U0-G1	2712	125	B1-U0-G1	3156	137	B1-U0-G1	3756	157	B1-U0-G1	
04L	2	70	3640	123	B1-U0-G1	3742	125	B1-U0-G1	4051	137	B1-U0-G1	4951	157	B1-U0-G1	28.5
	3	70	3610	122	B1-U0-G1	3708	123	B1-U0-G1	4124	140	B1-U0-G1	424	140	B1-U0-G1	
	4	70	3655	121	B1-U0-G1	3722	126	B1-U0-G1	4073	138	B1-U0-G1	4973	138	B1-U0-G1	
	5	70	3774	116	B2-U0-G2	3876	123	B2-U0-G2	4026	136	B2-U0-G2	4926	136	B2-U0-G2	
08L	2	70	5206	125	B1-U0-G1	5036	125	B1-U0-G1	6134	137	B1-U0-G1	6134	137	B1-U0-G1	44.7
	3	70	5206	125	B1-U0-G1	5036	125	B1-U0-G1	6134	137	B1-U0-G1	6134	137	B1-U0-G1	
	4	70	5206	125	B1-U0-G1	5036	125	B1-U0-G1	6134	137	B1-U0-G1	6134	137	B1-U0-G1	
	5	70	5206	125	B1-U0-G1	5036	125	B1-U0-G1	6134	137	B1-U0-G1	6134	137	B1-U0-G1	
68L	2	70	5896	113	B2-U0-G2	7354	116	B2-U0-G2	7963	119	B2-U0-G2	7963	119	B2-U0-G2	62.0
	3	70	7122	116	B1-U0-G1	7437	120	B1-U0-G1	8759	131	B2-U0-G2	8759	131	B2-U0-G2	
	4	70	7028	113	B1-U0-G1	7345	116	B2-U0-G2	8077	119	B2-U0-G2	8077	119	B2-U0-G2	
	5	70	7028	113	B1-U0-G1	7345	116	B2-U0-G2	8077	119	B2-U0-G2	8077	119	B2-U0-G2	
11L	2	70	19610	100	B2-U0-G2	19676	101	B2-U0-G2	22914	119	B2-U0-G2	22914	119	B2-U0-G2	102.2
	3	70	19137	106	B2-U0-G2	11178	109	B2-U0-G2	12252	123	B2-U0-G2	12252	123	B2-U0-G2	
	4	70	19674	103	B2-U0-G2	11640	108	B2-U0-G2	12990	118	B2-U0-G2	12990	118	B2-U0-G2	

Order Plans @ www.wldline.com



**SITE LIGHTING PHOTOMETRICS**

SCALE: 1"=20'



SHEETS BEARING THIS SEAL ARE AUTHENTICATED. RESPONSIBILITY FOR ALL OTHER PLANS, SPECIFICATIONS OR INSTRUMENTS ARE DISCLAIMED.

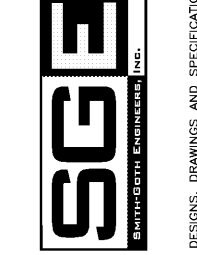
**O'Reilly AUTO PARTS**

CORPORATE OFFICES  
233 SOUTH PATTERSON  
SPRINGFIELD, MISSOURI 65802  
(417) 862-2674 TELEPHONE

**PROJECT:**  
NEW O'REILLY AUTO PARTS STORE  
6472 GA-42  
REX, GEORGIA

**SITE LIGHTING PHOTOMETRICS**

3885 S. JEFFERSON AVE.  
SPRINGFIELD, MO 65807  
P: 417-882-2200  
F: 417-882-1188  
www.oreilly.com



DRAWN BY: LC  
CHECKED BY: ALT/BLC  
DATE: 1/8/20  
REVISION:

PROJECT NUMBER:  
**REX**

SHEET NUMBER  
**SP1**

DESIGNS, DRAWINGS AND SPECIFICATIONS ARE INSTRUMENTS OF SERVICE AND ARE THE PROPERTY OF THE DESIGN PROFESSIONAL. REPRODUCTION PROHIBITED WITHOUT THE EXPRESSED WRITTEN CONSENT OF THE DESIGN PROFESSIONAL. © COPYRIGHT 2019-2020