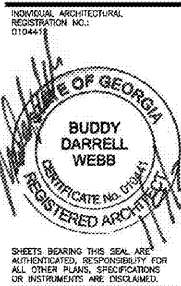


NOTE:
FOR TYPICAL EXTERIOR
WALL CONSTRUCTION
NOTATION, REFER

GENERAL NOTES

- (A) REFER TO PROJECT MANUAL AND SCOPE OF WORK SCHEDULE FOR ADDITIONAL REQUIREMENTS.
- (B) REFER TO CIVIL, STRUCTURAL, MECHANICAL, ELECTRICAL, PLUMBING AND PRE-ENGINEERED METAL BUILDING (P.E.M.B.) SHOP DRAWINGS FOR ADDITIONAL REQUIREMENTS.
- (C) REFER TO INTERIOR AND EXTERIOR FINISH SCHEDULES FOR MATERIAL TYPES, COLORS AND FINISHES.
- (D) DIMENSIONS ARE TO FACE OF CONCRETE, MASONRY, FRAMING, OR CENTER LINE OF STRUCTURE UNLESS OTHERWISE INDICATED.



KEY NOTES

- 1 FINISH FLOOR PAVEMENT OR SIDEWALK, SLOPE TO DRAIN AWAY FROM BUILDING. REFER TO CIVIL DRAWINGS.
- 2 CONCRETE FLOOR SLAB. REFER TO STRUCTURAL DRAWINGS.
- 3 BRICK VENEER IN RUNNING BOND. PROVIDE WALL TIES AT 16" O.C. VERTICAL AND 24" O.C. HORIZONTAL.
- 4 FLEXIBLE FLASHING TO EXTEND UP 8" MIN. AND THROUGH MASONRY VENEER AT FIRST BED JOINT BELOW FINISH FLOOR. LAP BUTT JOINTS 6" MIN. AND MASTIC. PROVIDE MORTAR NET ABOVE FLASHING. PROVIDE ROPE WEEPS AT 32" O.C. GROUT BELOW GRADE CAVITY FULL.
- 5 12" COLD FORM METAL FRAMING. REFER TO STRUCTURAL DRAWINGS.
- 6 8" COLD FORM METAL FRAMING. REFER TO STRUCTURAL DRAWINGS.
- 7 6" (18 GA.) COLD FORM METAL STUD FRAMING AT 24" O.C.
- 8 3 5/8" (20 GA.) COLD FORM METAL STUD FRAMING AT 24" O.C. REFER TO INTERIOR WALL TYPES FOR ADDITIONAL REQUIREMENTS.
- 9 COLD FORM METAL STUD FRAMING CLIP. REFER TO STRUCTURAL DRAWINGS.
- 10 FIRE TREATED 2X NAILER(S) CONTINUOUS. CUT TO FIT WALL WIDTH. ATTACHED TO METAL STUD FRAMING WITH #12 SCREWS AT 24" O.C. STAGGERED.
- 11 FIRE TREATED 2X NAILER OR BLOCKING.
- 12 EXTERIOR INSULATION FINISH SYSTEM (EIFS) OVER CONTINUOUS INSULATION DRAINAGE BOARD IN THICKNESS INDICATED.
- 13 EXTERIOR INSULATION FINISH SYSTEM (EIFS) DRIP.
- 14 PRE-ENGINEERED METAL BUILDING ROOF INSULATION (R-38) LINER SYSTEM. (REFER TO SCOPE OF WORK SCHEDULE) VAPOR BARRIER OVER HIGH STRENGTH STEEL SUSPENSION STRAPS ATTACHED TO BOTTOM OF PRE-ENGINEERED METAL BUILDING ROOF PURLINS WITH (1) LAYER 8" (R-25) UN-FACED BATT INSULATION PARALLEL WITH ROOF PURLIN CAVITY AND (1) LAYER 3 1/2" (R-11) UN-FACED BATT INSULATION PERPENDICULAR OVER TOP OF ROOF PURLINS.
- 15 6" (R-19) BATT INSULATION WITH FOIL FACE VAPOR BARRIER.
- 16 FLEXIBLE FLASHING CONTINUOUS TO LAP OVER NAILERS AND DOWN BEHIND CONTINUOUS CLEATS ON BOTH SIDES. LAP JOINTS 8" MINIMUM AND MASTIC.
- 17 SHEET METAL (24 GA.) FLASHING, COUNTER FLASHING, EDGES, DRIPS, TRIM, CLEATS AND ACCESSORIES.
- 18 5/8" EXTERIOR FIBERGLASS REINFORCED SHEATHING WITH CONTINUOUS WEATHER BARRIER. REFER TO STRUCTURAL DRAWINGS FOR ATTACHMENT REQUIREMENTS.
- 19 5/8" TYPE "X" GYPSUM BOARD. REFER TO INTERIOR WALL TYPES FOR ADDITIONAL REQUIREMENTS.
- 20 SUSPENDED ACOUSTICAL LAY - IN CEILING SYSTEM. REFER TO INTERIOR FINISH SCHEDULE FOR TYPES AND LOCATIONS.
- 21 FLOORING AND BASE. REFER TO INTERIOR FINISH SCHEDULE FOR TYPES AND LOCATIONS.
- 22 SEALANT WITH BACKER ROD.
- 23 ALUMINUM WINDOW SYSTEM. REFER TO FLOOR PLAN AND WINDOW SCHEDULES FOR TYPES.
- 24 DOOR AND FRAME SYSTEM. REFER TO FLOOR PLAN AND SCHEDULES FOR TYPES.
- 25 PRE-ENGINEERED METAL BUILDING PRIMARY AND SECONDARY STRUCTURAL FRAMING SYSTEMS.
- 26 PRE-ENGINEERED METAL BUILDING TRANSITION SUPPORT PLATE ASSEMBLY.
- 27 PRE-ENGINEERED METAL BUILDING ROOF PANEL SYSTEM WITH THERMAL SPACER BLOCKS (R-5 MIN.).
- 28 PRE-ENGINEERED METAL BUILDING SHEET METAL FLASHING, COUNTER FLASHING, CONTINUOUS CLEATS, DRIPS CLOSURES, TRANSITIONS, COPINGS AND ACCESSORIES AS REQUIRED.
- 29 PRE-ENGINEERED METAL BUILDING GUTTER AND DOWNSPOUT SYSTEM. REFER TO EXTERIOR ELEVATIONS FOR LOCATIONS. REFER TO P.E.M.B. SHOP DRAWINGS FOR SIZES.
- 30 SURFACE MOUNTED WALL SIGN. OWNER FURNISHED AND INSTALLED. (REFER TO SCOPE OF WORK SCHEDULE) PROVIDE BACKING AND ELECTRICAL ROUGH-IN. REFER TO ELECTRICAL DRAWINGS.
- 31 RECESSED LIGHTING FIXTURE. REFER TO ELECTRICAL DRAWINGS FOR TYPE AND LOCATION.
- 32 5/8" FIRE TREATED PLYWOOD SHEATHING.
- 33 3 5/8" COLD FORM METAL FRAMING. REFER TO STRUCTURAL DRAWINGS.
- 34 MODULAR BRICK VENEER IN ROWLOCK SILL COURSE. REFER TO EXTERIOR FINISH SCHEDULE.

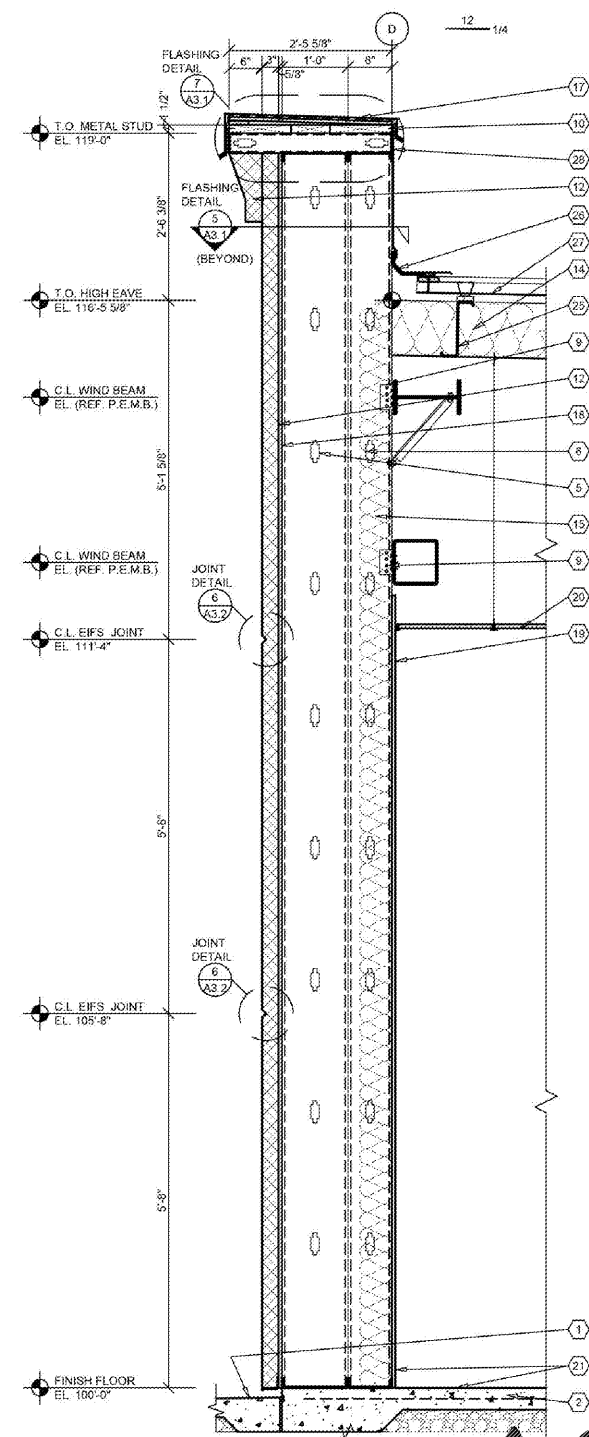
Reilly AUTO PARTS
CORPORATE OFFICES
283 SOUTH PATTERSON
SPRINGFIELD, MISSOURI 65802
(417) 862-2674 TELEPHONE

PROJECT:
NEW O'REILLY AUTO PARTS STORE
6472 GA-42
REX, GEORGIA
WALL SECTIONS

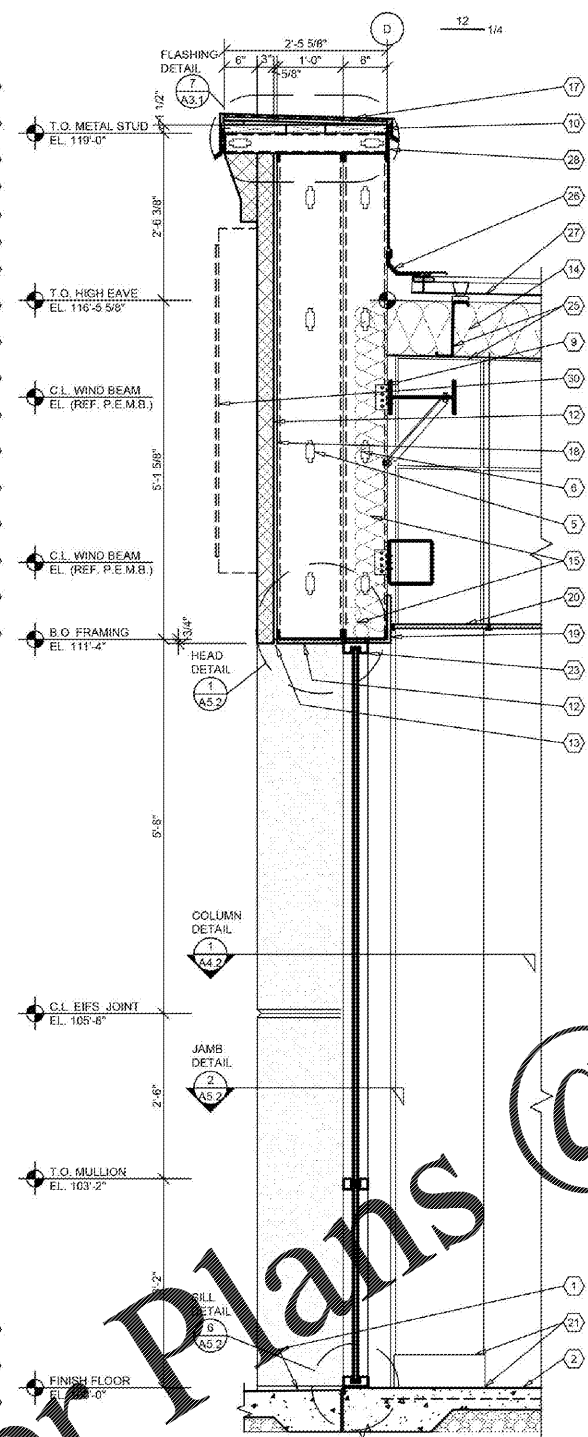
Buddy Webb, NCARB, AIA
Architect - Consultant
3057 EAST CAIRO
SPRINGFIELD, MISSOURI 65802
(417) 877-1385 TELEPHONE
(417) 877-8736 FAX

DRAWN BY: _____ CHECKED BY: **LG**
DATE: **01/08/20**
REVISION:
PROJECT NUMBER:
REX
SHEET NUMBER

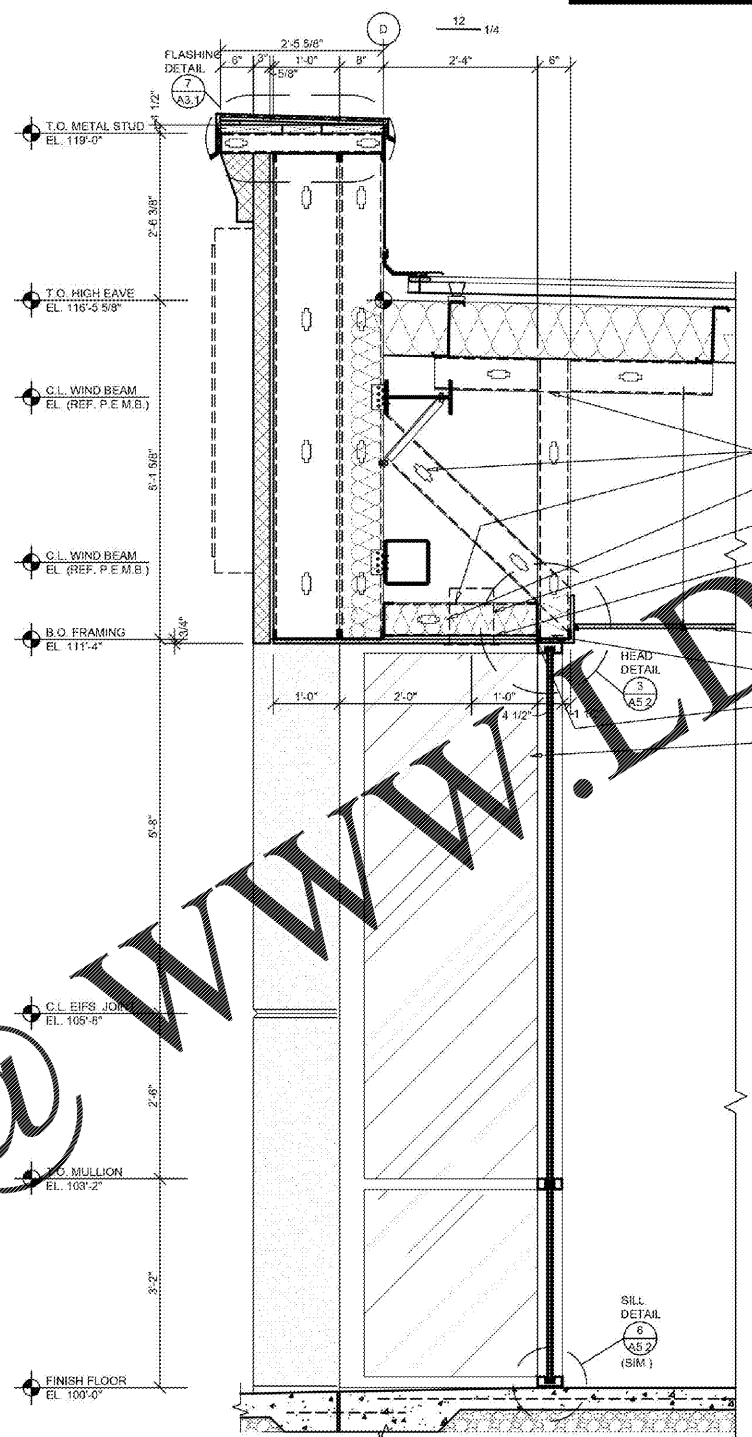
A3.1



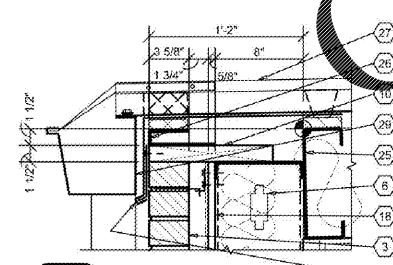
1 WALL SECTION
A3.1 SCALE: 3/4" = 1'-0"



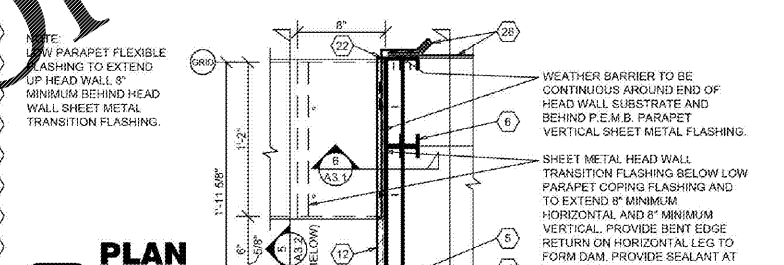
2 WALL SECTION
A3.1 SCALE: 3/4" = 1'-0"



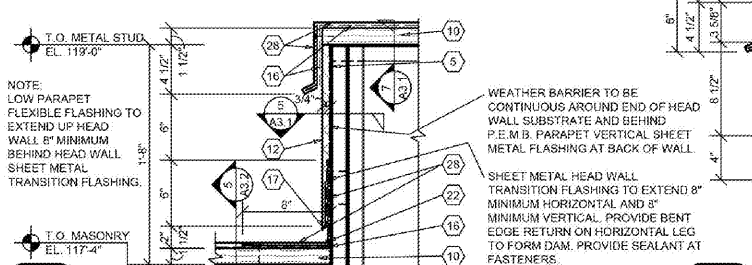
3 WALL SECTION
A3.1 SCALE: 3/4" = 1'-0"



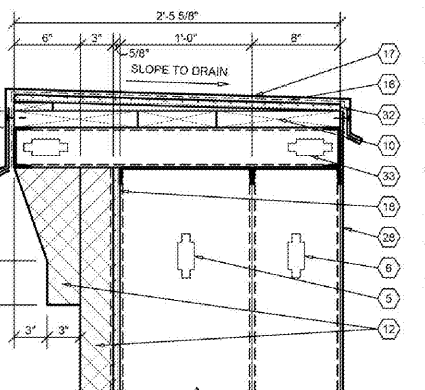
4 SECTION
A3.1 SCALE: 1 1/2" = 1'-0"



5 PLAN SECT.
A3.1 SCALE: 1 1/2" = 1'-0"



6 DETAIL
A3.1 SCALE: 1 1/2" = 1'-0"



7 SECTION
A3.1 SCALE: 1 1/2" = 1'-0"

NOTE:
REFER TO STRUCTURAL DRAWINGS FOR FOOTINGS,
FOUNDATIONS, SLABS AND REINFORCEMENT.

Order Plans @ WWW.A31Line.com

WWW.A31Line.com

REPRODUCTION PROHIBITED WITHOUT THE EXPRESSED WRITTEN CONSENT OF THE DESIGN PROFESSIONAL. COPYRIGHT 2020 1 DESIGNS. DRAWINGS AND SPECIFICATIONS ARE INSTRUMENTS OF SERVICE AND ARE THE PROPERTY OF THE DESIGN PROFESSIONAL.