



SHEETS BEARING THIS SEAL ARE AUTHENTICATED. RESPONSIBILITY FOR ALL OTHER PLANS, SPECIFICATIONS OR INSTRUMENTS ARE DISCLAIMED.

**O'Reilly AUTO PARTS**  
CORPORATE OFFICES  
233 SOUTH PATTERSON  
SPRINGFIELD, MISSOURI 65802  
(417) 882-2674 TELEPHONE

PROJECT:  
**NEW O'REILLY AUTO PARTS STORE**  
**6472 GA-42**  
**REX, GEORGIA**

**FOUNDATION PLAN**

JS Smith Consulting Engineers  
1801 W 32nd St. #100, Springfield, Missouri 65802  
PHONE: 417-824-0444 FAX: 417-824-6530



DRAWN BY: BTJ CHECKED BY: JS

DATE: 1/8/20

PROJECT NUMBER: REX

SHEET NUMBER

**S2**

COPYRIGHT 2020 - DESIGNS, DRAWINGS AND SPECIFICATIONS ARE INSTRUMENTS OF SERVICE AND ARE THE PROPERTY OF THE DESIGN PROFESSIONAL. REPRODUCTION PROHIBITED WITHOUT THE EXPRESSED WRITTEN CONSENT OF THE DESIGN PROFESSIONAL.

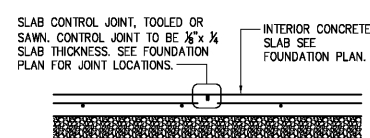
**KEYNOTES**

- 1 SLAB HAIRPIN. SEE DETAIL 8/S3.1
- 2 PROVIDE #4x4'-0" ANGLED DOWEL AT SLAB INSIDE CORNERS
- 3 CONTROL OR CONSTRUCTION JOINT SEE DETAILS 1 & 2/S2
- 4 SIDEWALK: PROVIDE 4" THICK CONCRETE REINFORCED W/ #3'S @ 18" O.C. EACH WAY (PLACED AT MID-HEIGHT OF SLAB) OVER COMPACTED SUB-BASE MATERIAL (AS DIRECTED BY THE GEOTECHNICAL REPORT OR ONSITE GEOTECHNICAL ENGINEER) PROPERLY PREPARED SUBGRADE. SEE CIVIL DRAWINGS FOR JOINT REQUIREMENTS, EXTENTS OF FLATWORK, AND TOP OF CONCRETE SPOT ELEVATIONS.
- 5 STEEL BOLLARD: SEE SITE DEVELOPMENT PLANS AND DETAILS. (WHERE APPLICABLE, ALIGN WITH CENTERLINE OF STOREFRONT MULLIONS AND JAMBS OF OVERHEAD DOOR.)
- 6 4'x4' (MIN.) DOORPAD: PROVIDE 4" THICK CONCRETE REINFORCED W/ #3'S @ 18" O.C. EACH WAY (PLACED AT MID-HEIGHT OF SLAB) OVER COMPACTED SUB-BASE MATERIAL (AS DIRECTED BY THE GEOTECHNICAL REPORT OR ONSITE GEOTECHNICAL ENGINEER) ON PROPERLY PREPARED SUBGRADE. CENTER PAD ON DOOR. SEE CIVIL DRAWINGS FOR TOP OF CONCRETE SPOT ELEVATION.
- 7 6" WIDE DOORPAD: PROVIDE 4" THICK CONCRETE REINFORCED W/ #3'S @ 18" O.C. EACH WAY (PLACED AT MID-HEIGHT OF SLAB) OVER COMPACTED SUB-BASE MATERIAL (AS DIRECTED BY THE GEOTECHNICAL REPORT OR ONSITE GEOTECHNICAL ENGINEER) ON PROPERLY PREPARED SUBGRADE. EXTEND CONCRETE 1'-6" PAST DOOR JAMBS. SEE CIVIL DRAWINGS FOR TOP OF CONCRETE SPOT ELEVATIONS.
- 8 ISOLATION JOINT. SEE DETAIL 3/S2 (SPACING NOT TO EXCEED 30'-0" O.C.)

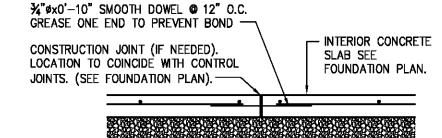
**FOUNDATION SCHEDULE**

MARK	FOOTING SIZE W x L x T	FOOTING REINFORCEMENT		BOTTOM OF FOOTING ELEVATION	PILASTER SIZE	PILASTER REINFORCEMENT		TOP OF PILASTER ELEVATION	MARK
		LONG.	TRANS.			VERT.	TIES		
F1	4'-0" x 4'-0" x 1'-6"	(6) #5's	(6) #5's	97'-6"					F1
F2	4'-6" x 3'-6" x 1'-6"	(6) #5's	(6) #5's	97'-6"					F2
F3	5'-6" x 5'-6" x 1'-6"	(6) #4 EACH WAY TOP & BOT.	(6) #4 EACH WAY TOP & BOT.	96'-0"	2'-6" x 2'-6"	(12) #6	SEE 9/S3.2	99'-4"	F3
F4	3'-6" x 3'-6" x 1'-6"	(5) #5's	(5) #5's	97'-6"					F4
F5	3'-6" x 3'-6" x 1'-6"	(5) #5's	(5) #5's	97'-6"					F5
F6	3'-6" x 3'-6" x 1'-6"	(5) #5's	(5) #5's	97'-6"					F6
F7	4'-6" x 4'-6" x 1'-6"	(6) #5's	(6) #5's	97'-6"					F7

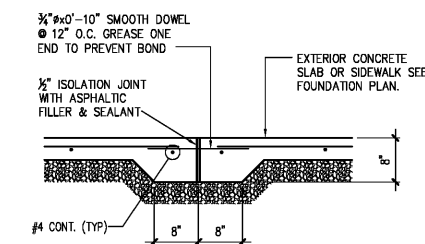
- NOTES:
1. ALL ANCHOR BOLTS SHALL BE SIZE, QUANTITY AND SPACING AS SPECIFIED BY THE PEMB MANUFACTURER. MAINTAIN 3" MINIMUM CONCRETE COVER AROUND BOLTS. TIES SHALL WRAP AROUND ANCHOR BOLTS.
  2. COLUMN BASE PLATES ARE TO REST ON TOP OF SLAB. PROVIDE LEVEL BEARING SURFACE FOR EVEN CONTACT.
  3. COLUMN FOOTING REINFORCEMENT TO BE INTEGRAL WITH CONTINUOUS FOUNDATION REINFORCEMENT (WHERE APPLICABLE)
  4. PROVIDE ANCHOR BOLT TEMPLATES AT COLUMN.
  5. ALL SPREAD FOOTINGS ARE TO BE CENTERED BENEATH COLUMNS UNLESS NOTED OTHERWISE.



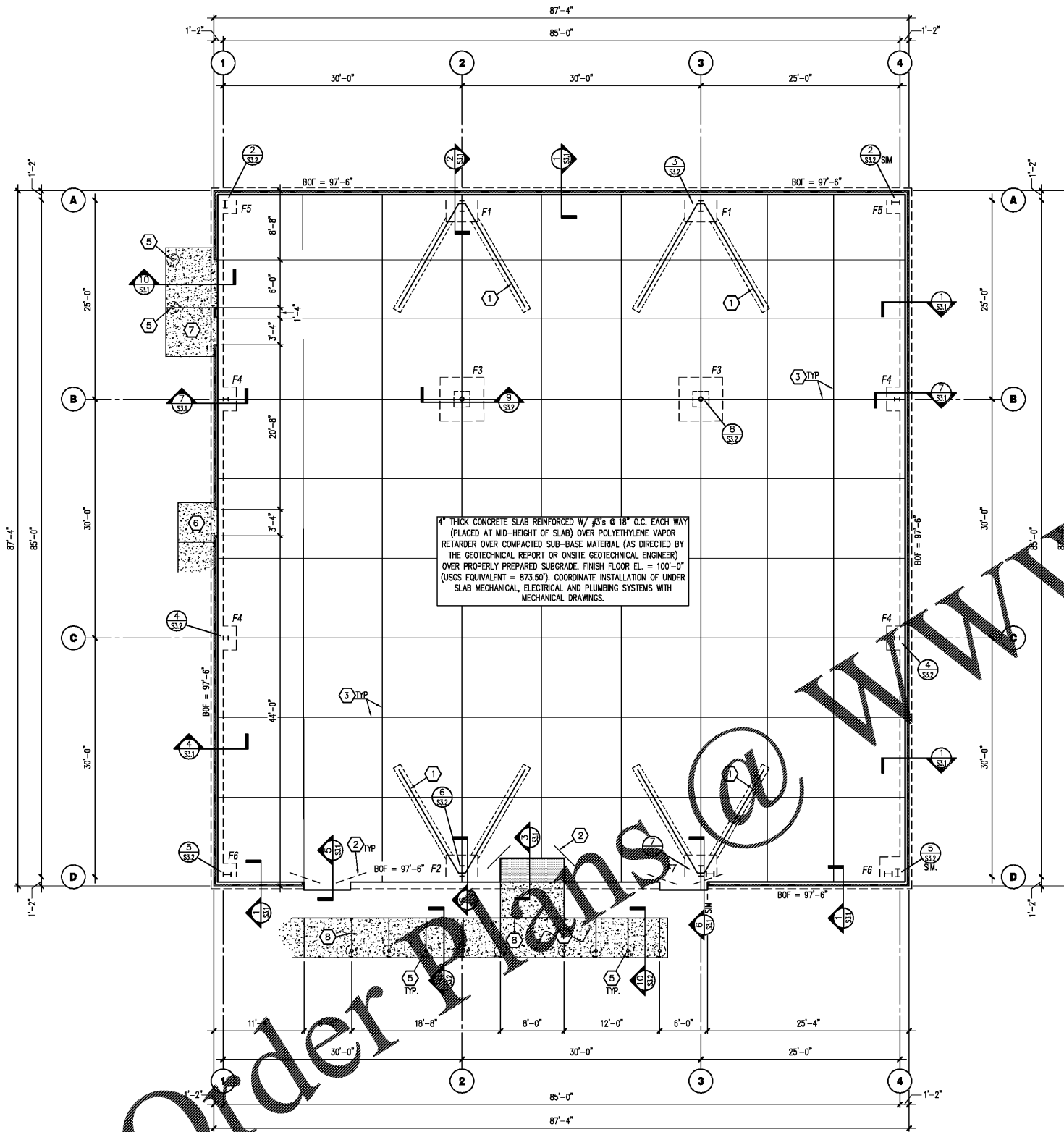
**1 TYP. CONTROL JOINT DETAIL**  
SCALE: 3/4" = 1'-0"



**2 TYP. CONSTR. JOINT DETAIL**  
SCALE: 3/4" = 1'-0"



**3 SIDEWALK ISOLATION JOINT**  
SCALE: 3/4" = 1'-0"



**FOUNDATION PLAN**  
SCALE: 1/8" = 1'-0"



Order Plans @ WWW.DIline.com