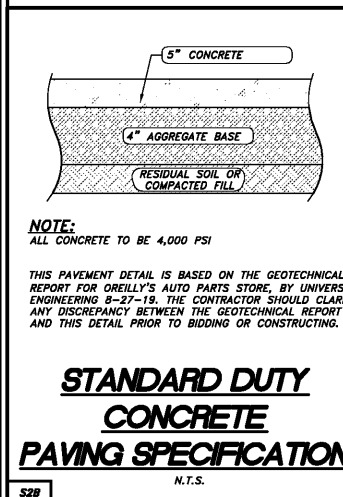
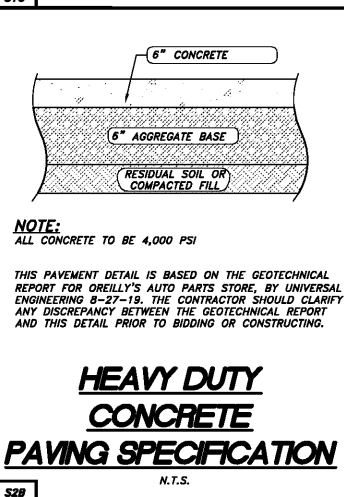


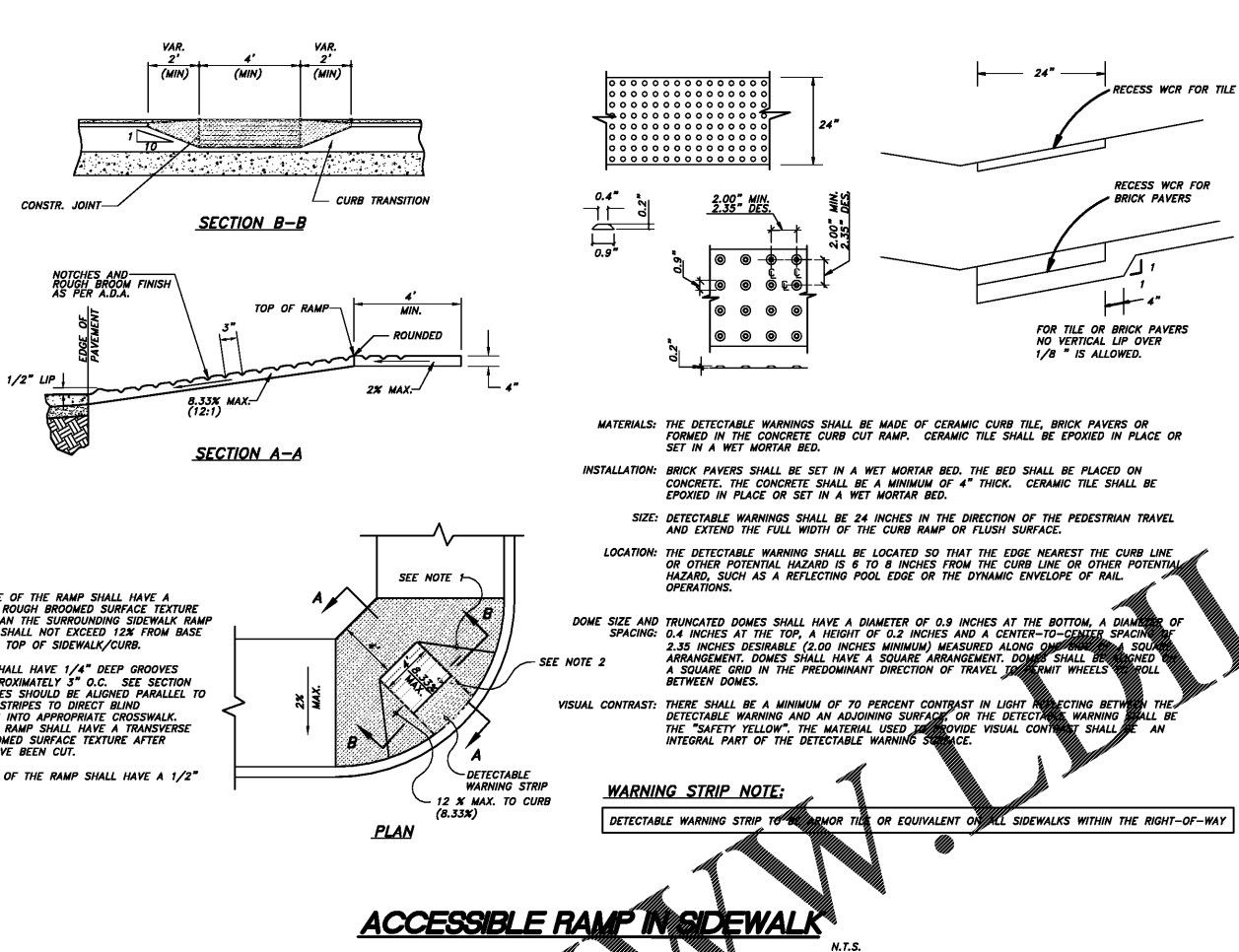
**NOTES**  
1. EXPANSION JOINTS REQUIRED AT ALL STRUCTURES AND CURB RETURNS. 25 FOOT MAXIMUM DISTANCE BETWEEN EXPANSION JOINTS.  
2. 4,000 P.S.I. CONCRETE WITH SMOOTH FINISH.  
3. COMPACT SUBGRADE TO 95% STANDARD PROCTOR.  
4. SEE GEOTECHNICAL REPORT FOR ADDITIONAL INFORMATION.



**NOTE:**  
ALL CONCRETE TO BE 4,000 PSI  
THIS PAVEMENT DETAIL IS BASED ON THE GEOTECHNICAL REPORT FOR OREILLY'S AUTO PARTS STORE, BY UNIVERSAL ENGINEERING 8-27-19. THE CONTRACTOR SHOULD CLARIFY ANY DISCREPANCY BETWEEN THE GEOTECHNICAL REPORT AND THIS DETAIL PRIOR TO BIDDING OR CONSTRUCTING.

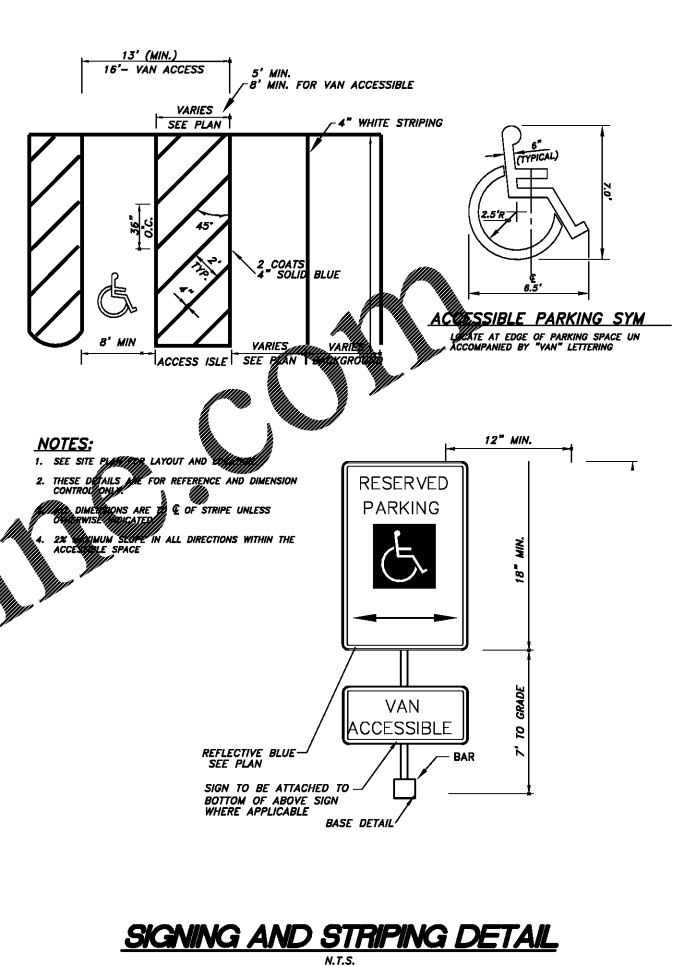


**NOTE:**  
ALL CONCRETE TO BE 4,000 PSI  
THIS PAVEMENT DETAIL IS BASED ON THE GEOTECHNICAL REPORT FOR OREILLY'S AUTO PARTS STORE, BY UNIVERSAL ENGINEERING 8-27-19. THE CONTRACTOR SHOULD CLARIFY ANY DISCREPANCY BETWEEN THE GEOTECHNICAL REPORT AND THIS DETAIL PRIOR TO BIDDING OR CONSTRUCTING.



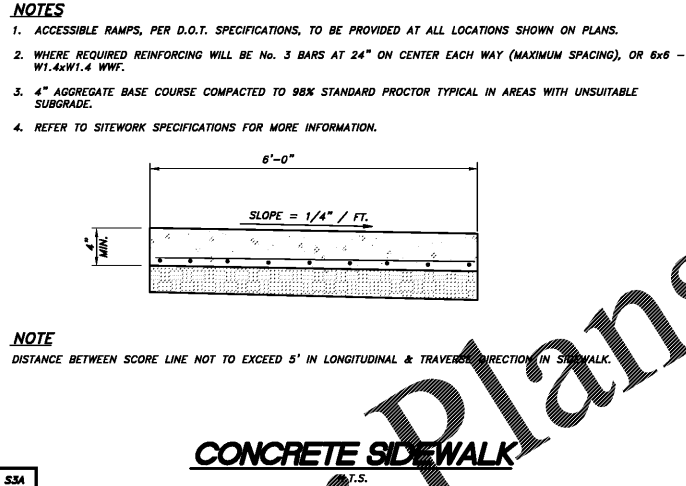
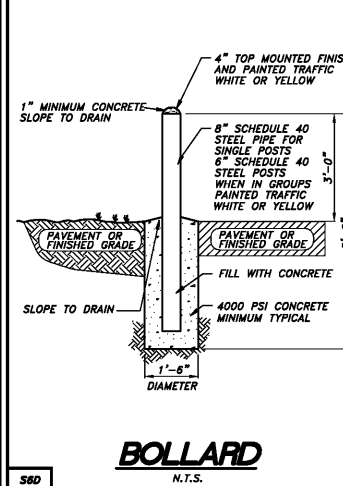
**NOTES**  
1. THE SURFACE OF THE RAMP SHALL HAVE A TRANSVERSE ROUGH BROOMED SURFACE TEXTURE ROUGHER THAN THE SURROUNDING SIDEWALK RAMP SIDE SLOPE SHALL NOT EXCEED 12% FROM BASE OF RAMP TO TOP OF SIDEWALK/CURB.  
2. THE RAMP SHALL HAVE 1/2" DEEP GROOVES SPACED APPROXIMATELY 3" O.C. SEE SECTION A-A. GROOVES SHOULD BE ALIGNED PARALLEL TO CROSSWALK STRIPES TO DIRECT BLIND PEDESTRIANS INTO APPROPRIATE CROSSWALK. SURFACE OF RAMP SHALL HAVE A TRANSVERSE ROUGH BROOMED SURFACE TEXTURE AFTER GROOVES HAVE BEEN CUT.  
3. THE BOTTOM OF THE RAMP SHALL HAVE A 1/2" LIP OF 45°.

**MATERIALS:** THE DETECTABLE WARNINGS SHALL BE MADE OF CERAMIC CURB TILE, BRICK PAVERS OR FORMED IN THE CONCRETE CURB CUT RAMP. CERAMIC TILE SHALL BE EPOXIED IN PLACE OR SET IN A WET MORTAR BED.  
**INSTALLATION:** BRICK PAVERS SHALL BE SET IN A WET MORTAR BED. THE BED SHALL BE PLACED ON CONCRETE. THE CONCRETE SHALL BE A MINIMUM OF 4" THICK. CERAMIC TILE SHALL BE EPOXIED IN PLACE OR SET IN A WET MORTAR BED.  
**SIZE:** DETECTABLE WARNINGS SHALL BE 24 INCHES IN THE DIRECTION OF THE PEDESTRIAN TRAVEL AND EXTEND THE FULL WIDTH OF THE CURB RAMP OR FLUSH SURFACE.  
**LOCATION:** THE DETECTABLE WARNING SHALL BE LOCATED SO THAT THE EDGE NEAREST THE CURB LINE OR OTHER POTENTIAL HAZARD IS 6 TO 8 INCHES FROM THE CURB LINE OR OTHER POTENTIAL HAZARD, SUCH AS A REFLECTING POOL EDGE OR THE DYNAMIC ENVELOPE OF RAIL OPERATIONS.  
**DOME SIZE AND TRUNCATED DOMES:** SHALL HAVE A DIAMETER OF 0.9 INCHES AT THE BOTTOM, A DIAMETER OF SPACING: 0.4 INCHES AT THE TOP A HEIGHT OF 0.2 INCHES AND A CENTER-TO-CENTER SPACING OF 2.5 INCHES DESIRABLE (2.00 INCHES MINIMUM) MEASURED ALONG CONCRETE. A SQUARE ARRANGEMENT. DOMES SHALL HAVE A SQUARE ARRANGEMENT. DOMES SHALL BE MOUNTED ON A SQUARE GRID IN THE PREDOMINANT DIRECTION OF TRAVEL TO PERMIT WHEELS TO ROLL BETWEEN DOMES.  
**VISUAL CONTRAST:** THERE SHALL BE A MINIMUM OF 70 PERCENT CONTRAST IN LIGHT REFLECTING BETWEEN THE DETECTABLE WARNING AND AN ADJOINING SURFACE OR THE DETECTABLE WARNING SHALL BE THE "SAFETY YELLOW". THE MATERIAL USED SHALL PROVIDE VISUAL CONTRAST SHALL BE AN INTEGRAL PART OF THE DETECTABLE WARNING SURFACE.  
**WARNING STRIP NOTE:** DETECTABLE WARNING STRIP TO BE CURB TILE OR EQUIVALENT ON ALL SIDEWALKS WITHIN THE RIGHT-OF-WAY.



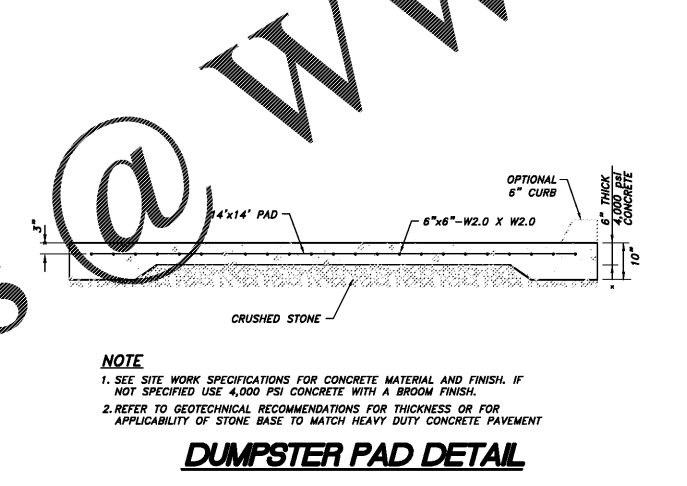
**NOTES:**  
1. SEE SITE PLAN FOR LAYOUT AND DIMENSIONS.  
2. THESE DETAILS ARE FOR REFERENCE AND DIMENSION CONTROL. VERIFY DIMENSIONS AND DIMENSIONS ARE INDICATED UNLESS OTHERWISE SPECIFIED.  
4. 2X MINIMUM DIMENSIONS IN ALL DIRECTIONS WITHIN THE ACCESSIBLE SPACE.

REFLECTIVE BLUE-SEE PLAN  
SIGN TO BE ATTACHED TO BOTTOM OF ABOVE SIGN WHERE APPLICABLE  
BASE DETAIL

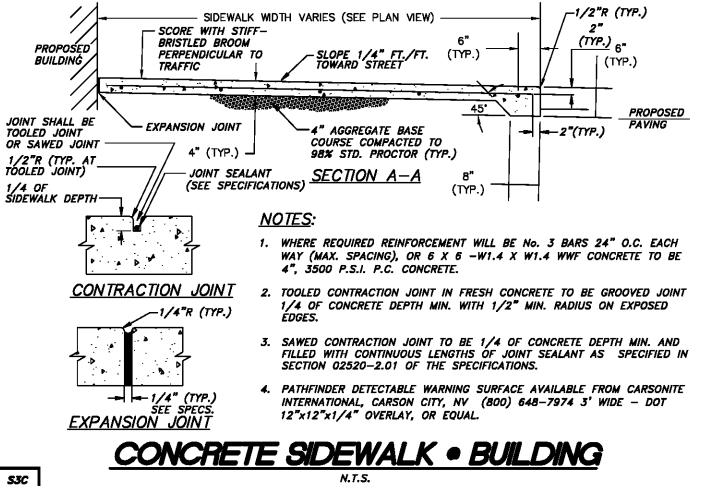


**NOTES**  
1. ACCESSIBLE RAMPS, PER D.O.T. SPECIFICATIONS, TO BE PROVIDED AT ALL LOCATIONS SHOWN ON PLANS.  
2. WHERE REQUIRED REINFORCING WILL BE No. 3 BARS AT 24" ON CENTER EACH WAY (MAXIMUM SPACING), OR 6x6-W1.4xW1.4 WWF.  
3. 4" AGGREGATE BASE COURSE COMPACTED TO 98% STANDARD PROCTOR TYPICAL IN AREAS WITH UNSUITABLE SUBGRADE.  
4. REFER TO SITEMARK SPECIFICATIONS FOR MORE INFORMATION.

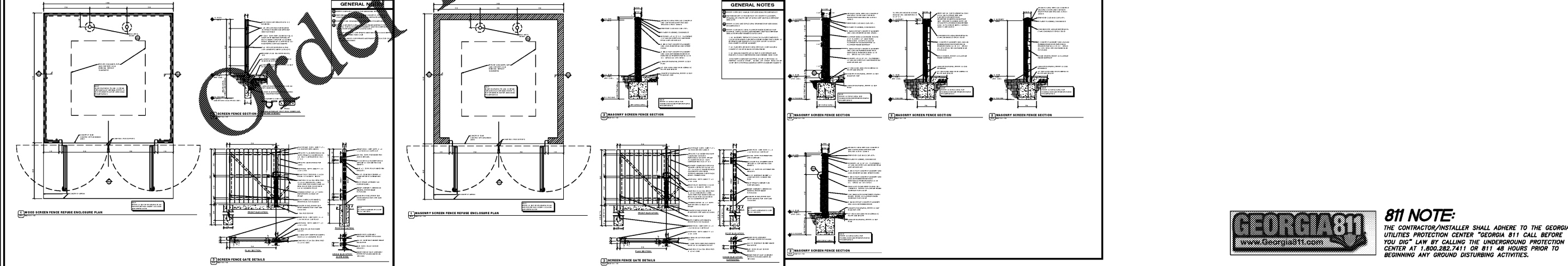
**NOTE**  
DISTANCE BETWEEN SCORE LINE NOT TO EXCEED 5' IN LONGITUDINAL & TRAVERSE DIRECTION IN SIDEWALK.



**NOTE**  
1. SEE SITE WORK SPECIFICATIONS FOR CONCRETE MATERIAL AND FINISH. IF NOT SPECIFIED USE 4,000 PSI CONCRETE WITH A BROOM FINISH.  
2. REFER TO GEOTECHNICAL RECOMMENDATIONS FOR THICKNESS OR FOR APPLICABILITY OF STONE BASE TO MATCH HEAVY DUTY CONCRETE PAVEMENT



**NOTES:**  
1. WHERE REQUIRED REINFORCEMENT WILL BE No. 3 BARS 24" O.C. EACH WAY (MAX. SPACING), OR 6 X 6 -W1.4 X W1.4 WWF CONCRETE TO BE 4,350 P.S.I. P.C. CONCRETE.  
2. TOOLED CONTRACTION JOINT IN FRESH CONCRETE TO BE GROOVED JOINT 1/4 OF CONCRETE DEPTH MIN. WITH 1/2" MIN. RADIUS ON EXPOSED EDGES.  
3. SAWED CONTRACTION JOINT TO BE 1/4 OF CONCRETE DEPTH MIN. AND FILLED WITH CONTINUOUS LENGTHS OF JOINT SEALANT AS SPECIFIED IN SECTION 02520-2.01 OF THE SPECIFICATIONS.  
4. PATHFINDER DETECTABLE WARNING SURFACE AVAILABLE FROM CARSONITE INTERNATIONAL, CARSON CITY, NV (800) 648-7974 3' WIDE - DOT 12"x12"x1/4" OVERLAY, OR EQUAL.



MASS ENGINEERING AND CONSULTANTS, LLC  
3439 ACWORTH DUE WEST RD, SUITE 556  
ROSELAND, GA 30069-7970  
PHONE: 404.850.7790  
WWW.MASS-ENG.COM  
Copyright © 2019



**REVISIONS**

DATE:	DESCRIPTION:

**DETAILS**

PROJECT NUMBER: 19-0103  
DATE: OCTOBER 1, 2019  
C-11



**811 NOTE:**  
THE CONTRACTOR/INSTALLER SHALL ADHERE TO THE GEORGIA UTILITIES PROTECTION CENTER "GEORGIA 811 CALL BEFORE YOU DIG" LAW BY CALLING THE UNDERGROUND PROTECTION CENTER AT 1.800.282.7411 OR 811 48 HOURS PRIOR TO BEGINNING ANY GROUND DISTURBING ACTIVITIES.