

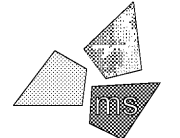
**GENERAL HVAC NOTES:**

- COORDINATE DIFFUSER LOCATIONS WITH REFLECTED CEILING PLAN INCLUDING LIGHTS AND SPRINKLER HEAD LAYOUTS.
- PROVIDE DUCT MOUNTED SMOKE DETECTORS RETURN AIR DUCTS AS INDICATED ON THE FLOOR PLAN. DUCT DETECTORS SHALL BE PROVIDED AND INSTALLED IN THE DUCTWORK BY THE MECHANICAL CONTRACTOR AND WIRED BY THE ELECTRICAL CONTRACTOR. DETECTORS SHALL BE COMPATIBLE WITH THE BUILDING FIRE ALARM SYSTEM AND INSTALLED PER MANUFACTURER'S INSTRUCTIONS.
- COORDINATE DUCTWORK MOUNTING HEIGHT AND LOCATION WITH STRUCTURAL STEEL AND LIGHTS. MOUNT DUCTWORK AS HIGH AS POSSIBLE.
- TEMPERATURE AND HUMIDITY SENSORS ARE SHOWN FOR REFERENCE ONLY. AN ENERGY MANAGEMENT SYSTEM IS BEING PROVIDED. BY SIEMENS, UNDER A SEPARATE CONTRACT BY THE OWNER. THE EMS SHALL BE INSTALLED BY THE REFRIGERATION CONTRACTOR AND THE MECHANICAL CONTRACTOR SHALL COORDINATE WORK WITH THE ALDI PROJECT MANAGER, SIEMENS PROJECT MANAGER, AND REFRIGERATION CONTRACTOR. S12-803-3169. REFERENCE THE SIEMENS EMS DRAWINGS LOCATED ON THE SHARENOLGY.COM WEBSITE IN THE VENDOR INFORMATION FOLDER.
- ALL DUCT DIMENSIONS REPRESENT FREE AREA.
- ALL MITERED ELBOWS & FITTINGS TO BE PROVIDED WITH TURNING VANES.
- ALL ROUND DUCTWORK SHALL BE SPIRAL ONLY.
- PROVIDE VOLUME DAMPERS AT ALL RETURN REGISTER TAKEOFFS.
- MAXIMUM FLEX DUCT LENGTH SHALL BE 4FT. FLEX DUCT ALLOWED ONLY ON CONCEALED DUCTWORK INSTALLED ABOVE A CEILING.
- FIELD VERIFY ALL NEW EQUIPMENT AND SCOPE OF WORK PRIOR TO BIDDING. NOTIFY OWNER IN WRITING 48 HOURS PRIOR TO BID DATE OF ANY QUESTIONS ON SCOPE OF WORK OR CONTRACT DOCUMENTS.
- PROVIDE 1 1/2" PVC CONDENSATE DRAIN & P-TRAP FOR ALL ROOFTOP UNITS.
- PROVIDE ACOUSTICAL INSULATION INSIDE ROOFTOP UNIT CURB FOR SOUND ATTENUATION. (TYPICAL)
- INSULATE ALL DUCTWORK CONCEALED ABOVE A CEILING AND EXPOSED IN THE BACK ROOM. SEE SPECIFICATION SECTION 230700 - HVAC INSULATION FOR DETAILS.

Issued:	Date:
A Client Review Set	05/07/19
B Permit Set	06/12/19
C Client Review Set	02/07/20
D Bid Set	02/10/20
Revisions:	Date:

**DO NOT SCALE PLANS**

Copying, Printing, Software and other processes required to produce these prints can stretch or shrink the actual paper or layout. Therefore, scaling of this drawing may be inaccurate. Contact ms consultants with any need for additional dimensions or clarifications.

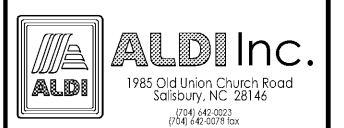


**ms consultants, inc.**  
engineers, architects, planners  
5444 Wade Park Blvd.  
Suite 160  
Raleigh, NC 27607-4299  
phone 919.772.5565  
fax 919.779.2308

DRAWN BY:	MEM
REVIEWED BY:	KFF

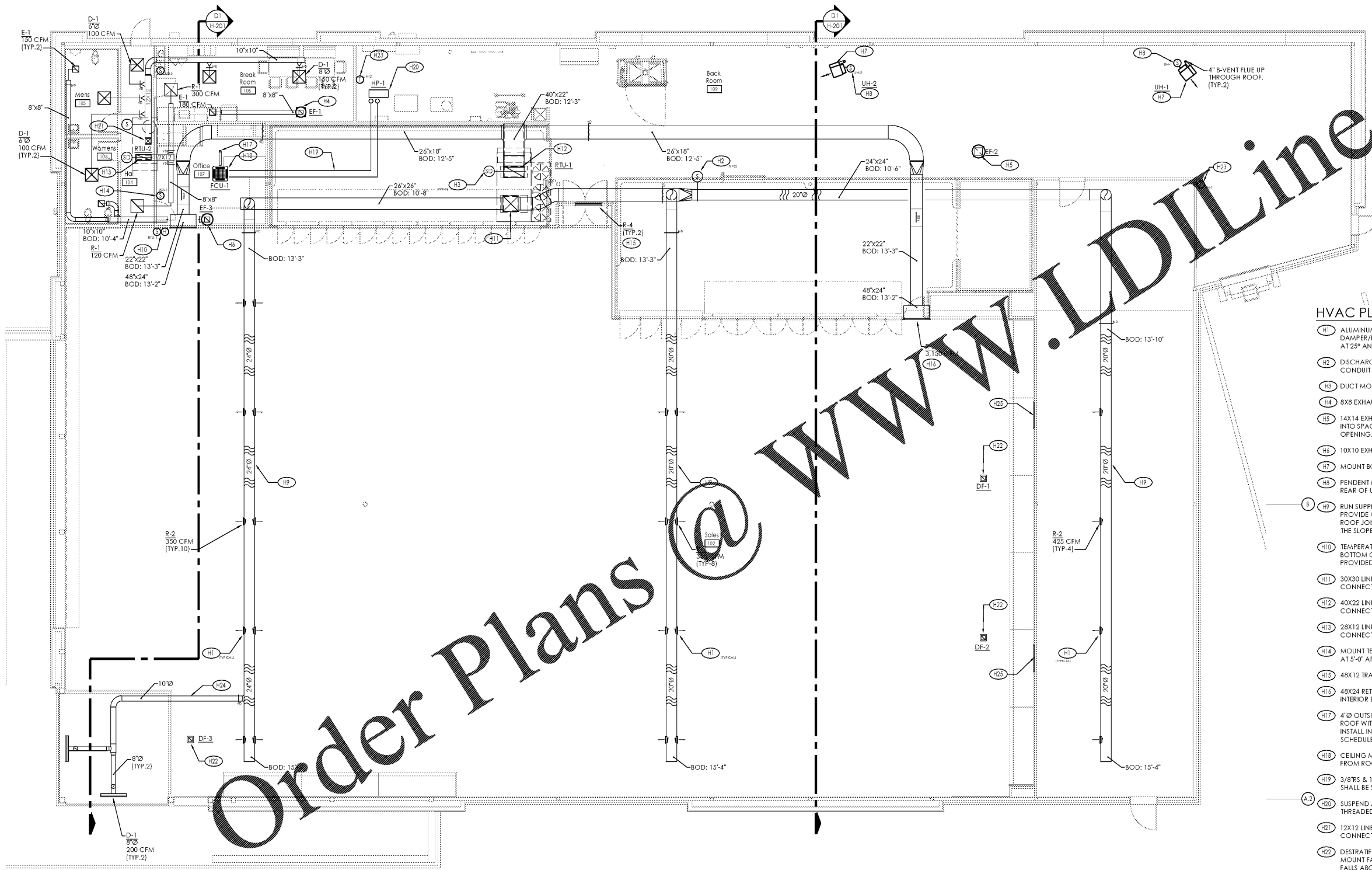
Seal

PROFESSIONAL OF RECORD:  
JASON E. CHRISTOFF No. 039391  
EXP. DATE: 12/31/2020



**ALDI Inc.** Store #: 154  
Cornelius, NC  
20101 West Catawba Avenue  
Cornelius, NC 28031  
Mecklenburg County  
Project Name & Location:

<b>HVAC Construction Plan</b>	
Drawing Name:	
Prototype Rls. 12/10/18	Project No. 40452-07
Type: LHS-D-V8ER	H-101
Scale: As Noted	Drawing No.



**HVAC PLAN KEYNOTES:**

- (H1) ALUMINUM SPIRAL DUCT MOUNTED SUPPLY GRILLE WITH DAMPER/EXTRACTOR MOUNTED ON DUCT. GRILLE SHALL BE INSTALLED AT 25° ANGLE DOWNWARD FROM THE HORIZONTAL POSITION.
- (H2) DISCHARGE AIR TEMPERATURE SENSOR. SENSORS, WIRING AND CONDUIT SHALL BE PROVIDED AND INSTALLED BY OTHERS.
- (H3) DUCT MOUNTED SMOKE DETECTOR.
- (H4) 8X8 EXHAUST UP TO EF-1 LOCATED ON ROOF.
- (H5) 14X14 EXHAUST UP TO EF-2 LOCATED ON ROOF AND EXTENDED 1'-8" INTO SPACE. PROVIDE T8X18 WELDED DRAIN PAN BELOW DUCT OPENING.
- (H6) 10X10 EXHAUST UP TO EF-3 LOCATED ON ROOF.
- (H7) MOUNT BOTTOM OF UNIT HEATER AT A MINIMUM OF 10'-6" AFF.
- (H8) PENDENT MOUNT TEMPERATURE SENSOR/DIGITAL ZONE CONTROLLER AT REAR OF UNIT HEATER AT 10'-6" AFF.
- (H9) RUN SUPPLY DUCT BETWEEN ROOF JOISTS AND THROUGH JOIST GIRDER. PROVIDE OFFSETS AS REQUIRED AND MOUNT AT BOTTOM CHORD OF ROOF JOIST. DUCT SHALL BE CENTERED ON THE JOIST BAY AND FOLLOW THE SLOPE OF THE ROOF. SEE HVAC SECTIONS ON DRAWING H-201.
- (H10) TEMPERATURE & HUMIDITY SENSORS MOUNTED ON WALL AT 5'-2" AFF TO BOTTOM OF EACH SENSOR. SENSORS, WIRING AND CONDUIT SHALL BE PROVIDED AND INSTALLED BY OTHERS.
- (H11) 30X30 LINED SUPPLY UP TO RTU-1. TRANSITION TO RTU SUPPLY CONNECTION.
- (H12) 40X22 LINED RETURN UP TO RTU-1. TRANSITION TO RTU RETURN CONNECTION.
- (H13) 28X12 LINED RETURN UP TO RTU-2. TRANSITION TO RTU RETURN CONNECTION.
- (H14) MOUNT TEMPERATURE SENSOR/DIGITAL ZONE CONTROLLER ON WALL AT 5'-0" AFF.
- (H15) 48X12 TRANSFER MOUNTED AT 8'-10" AFF.
- (H16) 48X24 RETURN GRILLE MOUNTED IN WALL. REFER TO ARCHITECTURAL INTERIOR ELEVATIONS.
- (H17) 4"Ø OUTSIDE AIR DUCT UP THROUGH ROOF. TERMINATE 1'-6" ABOVE ROOF WITH GOOSENECK. PROVIDE BACKDRAFT DAMPER IN RISER. INSTALL INLINE VENTILATION FAN IN RISER. SEE DUCTLESS SPLIT FAN COIL SCHEDULE FOR DETAILS.
- (H18) CEILING MOUNTED CASSETTE DUCTLESS SPLIT FAN COIL UNIT. SUSPEND FROM ROOF STRUCTURE WITH THREADED ROD.
- (H19) 3/8"RS & 1/4"RL INSULATED REFRIGERANT LINE KIT. REFRIGERANT PIPING SHALL BE SIZED PER MANUFACTURER'S RECOMMENDATIONS.
- (H20) SUSPEND AIR COOLED HEAT PUMP BETWEEN ROOF JOISTS WITH THREADED ROD AND UNISTRUT.
- (H21) 12X12 LINED SUPPLY UP TO RTU-2. TRANSITION TO RTU SUPPLY CONNECTION.
- (H22) DESTRATIFICATION FAN SUPPORTED FROM BUILDING STRUCTURE. MOUNT FAN A MINIMUM 4'-0" FROM FRONT OF MDU CASE. IF THE FAN FALLS ABOVE A LIGHT FIXTURE, MOUNT THE FAN ON THE OPPOSITE SIDE OF THE LIGHT FIXTURE RELATIVE TO THE MDU. DESTRAT FANS CANNOT BE MOUNTED DIRECTLY ABOVE ANY LIGHTING FIXTURES. THE OPTIMAL POSITION IS CENTERED ABOVE THE AISLE. DESTRAT FANS SHOULD NEVER BE PLACED IN A LOCATION THAT WILL BLOW AIR ON PRODUCE PRODUCTS. THEY SHOULD BE PLACED WITH THE TOP OF THE FAN 12"-24" FROM THE ROOF DECK. THE BOTTOM OF THE FAN SHOULD NOT HANG BELOW THE BOTTOM OF THE BEAMS. MAKE/MODEL: AIR-ROW F-18.
- (H23) FLAT PLATE TEMPERATURE SENSOR MOUNTED ON WALL/COLUMN AT 5'-0" AFF.
- (H24) RUN SUPPLY DUCT SERVING VESTIBULE THROUGH THE ROOF JOIST. DUCTWORK SHALL NOT BE INSTALLED BELOW ROOF STEEL.
- (H25) 48X12 TRANSFER GRILLE MOUNTED AT 1'-0" AFF.



**D1 HVAC Construction Plan**  
SCALE: 1/8" = 1'-0"  
NORTH

PLOTTED: 2/10/2020 11:05 AM