

FIRE PROTECTION PLAN KEYNOTES:

- (F1) PROVIDE 6" UNDERGROUND COMBINED FIRE PROTECTION AND DOMESTIC WATER SERVICE, CONNECT TO SITE PIPING. REFER TO SITE UTILITY PLANS AND COORDINATE WITH SITE CONTRACTOR.
- (F2) PROVIDE FIRE PROTECTION RISER AT 6" FP WATER SERVICE ENTRANCE. REFER TO DETAILS A1/FP-201 & C1/FP-201. A MINIMUM OF 3FT CLEARANCE REQUIRED FOR FIRE RISER.
- (F3) PROVIDE SPRINKLER SUPPLY PIPING AS REQUIRED TO SERVE ENTIRE BUILDING. PROVIDE 100% SPRINKLER COVERAGE THROUGHOUT BUILDING. HYDRAULICALLY SIZE ALL PIPING.
- (F4) PROVIDE DRY-PIPE HEADS (FOR WET-PIPE SYSTEMS) WITH HEAD GUARDS AND LOCATE WITHIN COOLER AND FREEZER UNITS PER NFPA-13. PROVIDE UPRIGHT WET-PIPE HEADS ABOVE UNITS.
- (F5) PROVIDE PENDENT HEAD(S) IN CEILING AND/OR SOFFIT.
- (F6) PROVIDE UPRIGHT HEAD(S) ABOVE LAY-IN CEILING BELOW.
- (F7) PROVIDE INSPECTOR'S TEST. TERMINATE THRU WALL WITH 45° ELBOW TURNED DN. REFER TO DETAIL D1/FP-201.
- (F8) PRIOR TO SPRINKLER ROUGH-IN, COORDINATE LOCATION OF DRY PIPE HEADS WITH REFRIGERATION CONTRACTOR. ANY DRY PIPE HEAD THAT FALLS WITHIN 48" OF EVAPORATOR SHALL BE A HIGH TEMPERATURE HEAD.
- (F9) ROUTE MAIN WITHIN BACK ROOM TIGHT TO BOTTOM OF STEEL. ROUTE ALL BRANCH LINES NO LOWER THAN THE TOP OF THE BOTTOM CHORD OF JOISTS. ANY LINE, BRANCH OR MAIN; RUN ON THE SALES FLOOR SHALL BE NO LOWER THAN THE TOP OF THE BOTTOM CHORD OR JOIST. COORDINATE WITH HVAC AND ELECTRICAL CONTRACTOR TO MINIMIZE DEVIATIONS FROM THESE MINIMUMS.
- (F10) PROVIDE 4" FDC. REFER TO DETAIL D2/FP-201.
- (F11) PROVIDE [4] CONCEALED PENDANT HEADS WITHIN CEILING AS SHOWN.
- (F12) COORDINATE LOCATION OF SPRINKLER HEADS WITH RTU DUCT DROPS AND ASSOCIATED DUCT WORK AS REQUIRED TO MAINTAIN CODE REQUIRED FIRE PROTECTION COVERAGE.
- (F13) IF UPRIGHT HEAD(S) ARE OBSTRUCTED BY OVERHEAD DOOR WHEN DOOR IS OPEN, PROVIDE ADDITIONAL HEAD(S) BELOW DOOR TO PROVIDE PROPER COVERAGE. LOCATION MUST BE IN ACCORDANCE WITH LOCAL OR GOVERNING CODE.
- (F14) PROVIDE 2" DRAIN OFF MAIN. REFER TO C1/FP-201 FOR DETAIL.
- (F15) DO NOT ROUTE ANY FIRE PROTECTION PIPING OVER ELECTRICAL GEAR. COORDINATE NEARBY WORK WITH G.C..

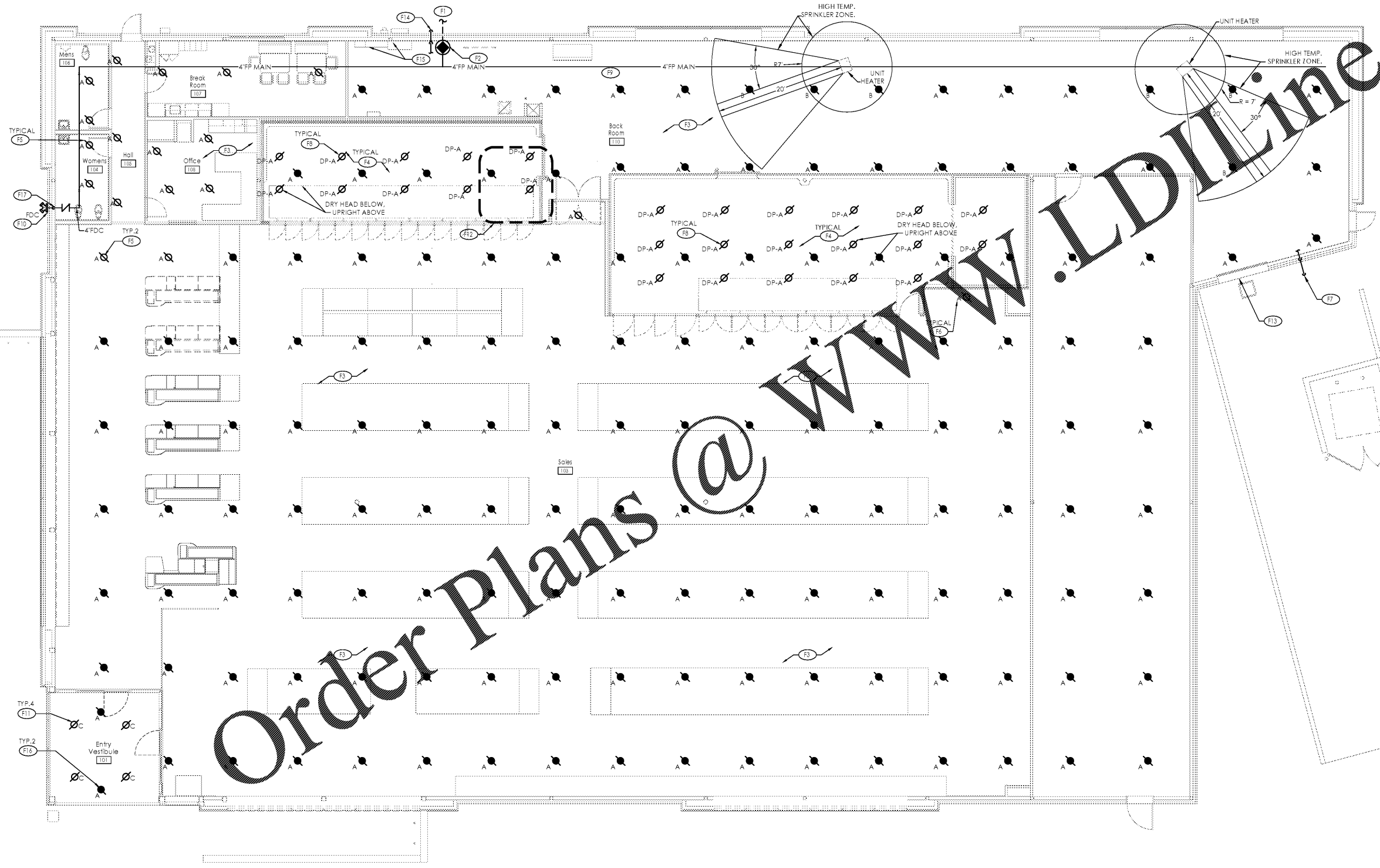
- (F16) PROVIDE [2] UPRIGHT HEADS ABOVE CEILING AT DECK AS SHOWN.
- (F17) ACCESS PANEL BY G.C. FOR BALL DRIP INSPECTION AND MAINTENANCE TO BE COORDINATED WITH G.C. FOR EXACT LOCATION. REFER TO DETAIL D2/FP-201

SPRINKLER HEAD SCHEDULE						
SYMBOL	DESCRIPTION	ORIFICE SIZE	"K" VALUE	TEMP.	FINISH	NOTES
⊘A	PENDANT - TYCO TY-FR8 (TY3231), OR APPROVED EQUAL	1/2"	5.60	155	WHITE	1,2,3,6
⊘A	UPRIGHT - TYCO TY-FR8 (TY3131), OR APPROVED EQUAL	1/2"	5.60	155	CHROME	1,6
⊘B	UPRIGHT - TYCO TY-FR8 (TY3131), OR APPROVED EQUAL	1/2"	5.60	200	CHROME	1,6
⊘C	CONCEALED PENDANT - TYCO RFI (TY3531), OR EQUAL	1/2"	5.60	155	MATCH CLG	1,3,5,6
⊘DP-A	PENDANT DRY HEAD - DS-1 (TY3255), OR EQUAL	1/2"	5.60	155	CHROME	1,4,6

- NOTES:**
- STANDARD RESPONSE
 - PROVIDE RECESSED ESCUTCHEON (FINISH: WHITE)
 - PROVIDE 1" STAINLESS STEEL CORRUGATED FLEXIBLE TUBING TO PENDANT SPRINKLER HEAD ABOVE CEILING.
 - PROVIDE SPRINKLER HEAD GUARD.
 - COVER PLATE SHALL MATCH SURROUNDING CEILING COLOR.
 - FIRE SUPPRESSION SHOP DRAWINGS FOR BE REVIEWED BY ARCHITECT AND ENGINEER PRIOR TO INSTALLATION

GENERAL FIRE PROTECTION NOTES:

- PROVIDE ALL WORK IN COMPLIANCE WITH ALL LOCAL, STATE AND FEDERAL CODES. COORDINATE ALL WORK WITH LOCAL FIRE MARSHAL.
- SPRINKLER CONTRACTOR SHALL OBTAIN AND PAY FOR ALL STATE AND LOCAL PERMITS REQUIRED FOR HIS WORK, AND SCHEDULE ANY INSPECTIONS REQUIRED BY GOVERNING RULES AND REGULATIONS.
- PROVIDE FULL SPRINKLER COVERAGE FOR ALL SPACES IN COMPLIANCE WITH LOCAL, STATE AND FEDERAL CODES, NFPA-13 AND OWNER'S INSURANCE CARRIER/UNDERWRITER.
- COORDINATE FIRE PROTECTION SYSTEM WITH ALL OTHER TRADES, BUILDING CONDITIONS.
- ALL PIPING SHALL BE PIPED BACK TO MAIN WITH SPRINKLER HEADS AS FAR AS POSSIBLE IN SPACES WITH NO CEILING'S (EXPOSED ROOF, ETC.).
- FIRE PROTECTION CONTRACTOR SHALL PROVIDE DRY PIPE PENDENT HEADS WITH HEAD GUARDS IN FREEZERS AND COOLERS, FREEZER AND COOLER UNITS SHALL BE RESPONSIBLE FOR SEALING THE SPRINKLER HEAD PENETRATION INTO THE INSULATED BOX.
- SPRINKLER HEADS TO MISS LIGHT FIXTURES IN COOLER AND FREEZER AND TO BE LOCATED NO CLOSER THAN 24" TO REFRIGERATION COILS HUNG FROM CEILING OF COOLER/FREEZER OR NO CLOSER THAN 48" TO THE BACK WALL OF THE COOLER/FREEZER. (COORDINATE WITH REFRIGERATION CONTRACTOR).
- FOR ALL AREAS WITH CEILING GRIDS, PROVIDE SPRINKLERS IN THE CENTER OR QUARTER OF CEILING TILES AND SHALL BE WHITE FINISH. REFER TO ARCHITECTURAL PLAN FOR CEILING GRID LAYOUT.
- THE SPRINKLER/FIRE PROTECTION CONTRACTOR SHALL HYDRAULICALLY CALCULATE COMPLETE SPRINKLER SYSTEM.
- PROVIDE [2] EXTRA HEADS FOR EACH TYPE OF SPRINKLER HEAD AND TEMPERATURE AND ASSOCIATED WRENCHES FOR EACH HEAD STYLE FOR SPARES. PROVIDE SURFACE MOUNTED SPRINKLER HEAD/WRENCH CABINET FOR SPARE HEADS AND WRENCHES. MOUNT HEAD CABINET WITHIN UTILITY ROOM, ADJACENT TO FIRE RISER. CABINET SHALL BE EASILY ACCESSIBLE.
- FIRE PROTECTION CONTRACTOR SHALL TEST AND FLUSH PIPING.
- NOTE THAT SPRINKLER HEADS SHOWN ARE FOR REFERENCE ONLY AND THE FIRE PROTECTION CONTRACTOR SHALL DESIGN THE ENTIRE FIRE PROTECTION SYSTEM PER NFPA-13, INCLUDING ALL HEAD LOCATIONS, BRANCH PIPING, MAIN RUNS AND ASSOCIATED PIPE SIZES. HEAD LOCATIONS BY FIRE PROTECTION CONTRACTOR'S DESIGN MAY BE DIFFERENT THAN SHOWN HEREIN.
- ALL WATER PIPING SHALL BE ROUTED AROUND ELECTRICAL AREAS WHERE POSSIBLE. IF ANY PIPING IS OVER THE AREA, DRIP PAN SHALL BE INSTALLED UNDER THE ENTIRE LENGTH OF EACH PIPE OVER THE SENSITIVE AREA OVER THE ROOM, CHANNELING WATER AWAY SO AS TO PREVENT ANY LEAKS IN THE AREA. AT THE LOWER SEGMENT OF DRIP PAN, ROUTE DRAIN TO NEAREST APPROVED RECEPTACLE WITH AN APPROVED AIR GAP PER CODE. CONTRACTOR SHALL REVIEW ALL DRAWING PRIOR TO CONSTRUCTION, AND REPORT IF THIS CONDITION EXIST.
- COORDINATE ANY NECESSARY SEISMIC BRACING OF SPRINKLER SYSTEM WITH SEISMIC DESIGN CATEGORY AND PROVIDE ALL APPLICABLE REQUIREMENTS IN COMPLIANCE WITH ALL LOCAL, STATE, AND FEDERAL CODES. NFPA-13 AND OWNER'S INSURANCE CARRIER/UNDERWRITER.



Building Sprinkler Information
 OWNER: ALDI, Inc.
 1985 Old Union Church Road
 Salisbury, NC 28146
 LOCATION: Aldi - Inc.
 West Catawba Avenue
 Cornelius, NC
 OCCUPANCY: Mercantile
 HAZARD CLASSIFICATION: Store - Ordinary Hazard Group 2

Sprinkler System Information
 SPRINKLER SYSTEM TYPE: Wet-Pipe
 MAX AREA/ SPRINKLER: 130 SQ.FT.
 FLOW DENSITY: 0.2 GPM/SQ.FT.
 AREA OF COVERAGE: 1,500 SQ.FT.
 INSIDE HOSE DEMAND: N/A
 OUTSIDE HOSE DEMAND: 250 GPM

Water Supply Information:
 FIRE PROTECTION CONTRACTOR IS RESPONSIBLE FOR OBTAINING CURRENT HYDRANT FLOW TEST DATA FOR HYDRAULIC CALCULATIONS

Issued:	Date:
A Client Review Set	05/07/19
B Permit Set	06/12/19
C Client Review Set	02/07/20
D Bid Set	02/10/20
Revisions:	Date:

DO NOT SCALE PLANS
 Copying, Printing, Software and other processes required to produce these prints can stretch or shrink the actual paper or layout. Therefore, scaling of this drawing may be inaccurate. Contact the consultants with any need for additional dimensions or clarifications.

ms consultants, inc.
 engineers, architects, planners
 5444 Wade Park Blvd.
 Suite 160
 Raleigh, NC 27607-4299
 phone 919.772.5565
 fax 919.779.2308

DRAWN BY: MEM
 REVIEWED BY: KFF

Seal
 PROFESSIONAL OF RECORD:
 JASON E. CHRISTOFF No. 039391
 EXP. DATE: 12/31/2020

ALDI Inc.
 1985 Old Union Church Road
 Salisbury, NC 28146
 (704) 642-0025
 (704) 642-5078 fax

ALDI Inc. Store #: 154
 Cornelius, NC
 20101 West Catawba Avenue
 Cornelius, NC 28031
 Mecklenburg County
 Project Name & Location:

Fire Protection Floor Plan Drawing Name:	
Prototype Rls. 12/10/18	Project No. 40452-07
Type: LHSD-V8ER	FP-101
Scale: As Noted	Drawing No.

PLOTED: 2/10/2020 11:05 AM