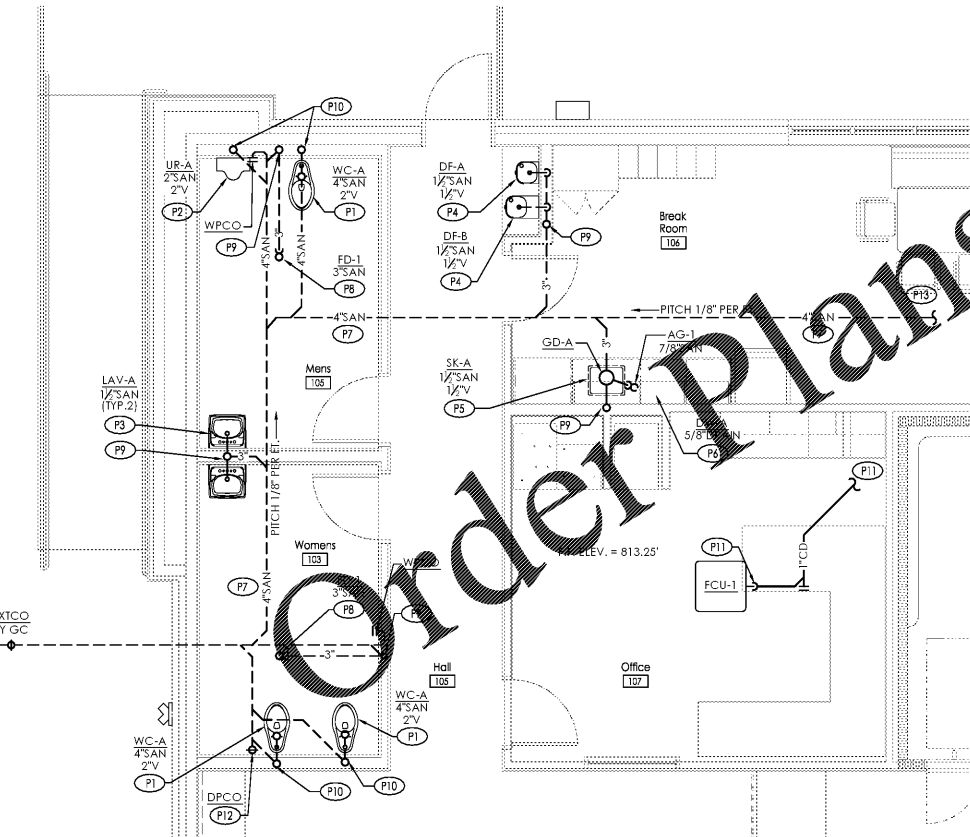
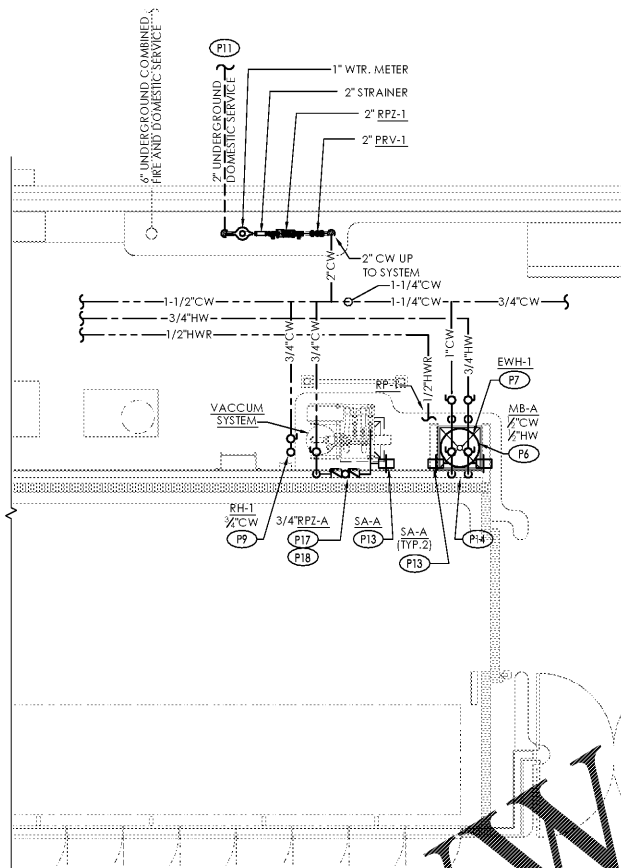


**B1** Domestic Water Enlarged Plan  
SCALE: 1/4" = 1'-0"



**D1** Sanitary Enlarged Plan  
SCALE: 1/4" = 1'-0"



**GENERAL DOMESTIC WATER NOTES:**

- REFER TO DETAIL A1/P-401 AND ISOMETRIC DIAGRAM B1/P-301.
- PROVIDE DOMESTIC CW & HW PIPING. PIPING SHALL BE COPPER OR CPVC WATER SUPPLY PIPING. CPVC PIPING SHALL BE APPROVED FOR POTABLE WATER SYSTEMS.
- ROUTE CW & HW SUPPLY PIPING ABOVE CEILING.
- ALL WATER PIPING SHALL BE ROUTED AWAY FROM ELECTRICAL EQUIPMENT WHENEVER POSSIBLE. REFER TO P-501 GENERAL NOTES FOR ROUTING INFORMATION.

**ENLARGED PLUMBING PLAN KEYNOTES (B1):**

- P1 PROVIDE WATER CLOSET AND PIPING CONNECTIONS.
- P2 PROVIDE URINAL AND PIPING CONNECTIONS.
- P3 PROVIDE LAVATORY AND PIPING CONNECTIONS.
- P4 PROVIDE DRINKING FOUNTAIN AND PIPING CONNECTIONS.
- P5 PROVIDE SINK AND PIPING CONNECTIONS.
- P6 PROVIDE MOP BASIN WITH WALL FAUCET AND PIPING CONNECTIONS.
- P7 PROVIDE WATER HEATER ABOVE MOP BASIN SEE DETAIL A3/P-401 FOR EWH-1 PIPING DETAIL & HW & CW PIPING SCHEMATIC DOWN TO MB-A. PROVIDE TRAP GUARD INSERT FOR FLOOR DRAIN.
- P8 PROVIDE 3/4" ANTI-FREEZE LOCKABLE BOX WALL HYDRANT MOUNT 1" ABOVE FINISHED GRADE. PROVIDE WITH TWO (2) KEYS.
- P9 PROVIDE ROOF HYDRANT WITH 3/4" CW ONLY AT A MINIMUM DISTANCE OF 4'-0" FROM ROOF HATCH OPENING.
- P10 PROVIDE TEMPERING MIXING VALVE MOUNT ABOVE CEILING IN ACCESSIBLE LOCATION.
- P11 REFER TO SITE UTILITY DRAWINGS FOR CONTINUATION OF PIPING. P.C. SHALL MAKE FINAL CONNECTIONS TO SITE PIPING. COORDINATE WITH S.C. FOR CONNECTIONS.
- P12 PROVIDE 1/2" CW & 1/2" DN. IN WALL TO SINK.
- P13 PROVIDE WATER HAMMER SHOCK ABSORBER ABOVE UNIT SERVED. SCALE TO FIT FOR CLARITY PURPOSES ONLY.
- P14 PROVIDE 1/2" CW & 1/2" DN. IN WALL TO MOP BASIN.
- P15 PROVIDE DISHWASHER AND PIPING CONNECTIONS.
- P16 CONNECT 1/2" HWR TO 1/2" HW AHEAD OF VALVE ABOVE CEILING.
- P17 PROVIDE RIGID WATER PIPE SUPPORT ON EACH SIDE OF PIPING CHANGING DIRECTION UPSTREAM OF VACUUM SYSTEM CONNECTIONS. INSTALL SHOCKSTOP AS CLOSE AS POSSIBLE TO QUICK-CLOSING VALVES. PROVIDE UNISTRUT SUPPORT WITH HOLDRITE 257-P SIZES UNDER 1" PIPE SIZE AND 287-P SERIES 1" UP TO 2" PIPE SIZE STRUT CLAMP WITH ACOUSTICAL PADS.
- P18 PROVIDE REDUCED PRESSURE ZONE ASSEMBLY BACKFLOW DEVICE AND 3/4" CW TO VACUUM SYSTEM. PLUMBING CONTRACTOR SHALL MAKE ALL FINAL CONNECTIONS. MOUNT RPZ-1 BETWEEN 30" AND 60" AFF.

**SANITARY NOTE:**

PRIOR TO BID, P.C. AND G.C. SHALL VERIFY SANITARY SEWER SYSTEM LOCATION, ROUTING, PITCHES, INVERTS, SIZES AND TIE-IN POINT. ALL SEWER SYSTEM INFORMATION SHALL BE COORDINATED WITH ALDI, INC. REPRESENTATIVE AT TIME OF BID WALK-THROUGH. INFORM PLUMBING ENGINEER OF ANY AND ALL DISCREPANCIES FROM WORK SHOWN ON PLUMBING DRAWINGS PRIOR TO BID DATE

**NOTE:**

ALL ELEVATIONS ARE TAKEN FROM FINISHED FLOOR: 813.75'

**ENLARGED PLUMBING PLAN KEYNOTES (D1):**

- P1 PROVIDE WATER CLOSET AND PIPING CONNECTIONS.
- P2 PROVIDE URINAL AND PIPING CONNECTIONS.
- P3 PROVIDE LAVATORY AND PIPING CONNECTIONS.
- P4 PROVIDE DRINKING FOUNTAIN AND PIPING CONNECTIONS.
- P5 PROVIDE SINK, GARBAGE DISPOSAL AND PIPING CONNECTIONS.
- P6 PROVIDE DISHWASHER AND PIPING CONNECTIONS. ROUTE DRAIN TO GARBAGE DISPOSAL OR SINK TAIL PIECE VIA CODE-COMPLIANT AIR GAP.
- P7 PROVIDE SANITARY PIPING BELOW FLOOR.
- P8 PROVIDE FLOOR DRAIN WITH TRAP GUARD INSERT.
- P9 1/2" UP. REFER TO SANITARY ISOMETRIC DIAGRAM D1/P-301 FOR CONTINUATION.
- P10 2" UP. REFER TO SANITARY ISOMETRIC DIAGRAM D1/P-301 FOR CONTINUATION.
- P11 PROVIDE 1" CONDENSATE DRAIN FROM FCU-1. ROUTE TO FLOOR SINK AS SHOWN. SLOPE AT 1/8" PER FOOT. TERMINATE DRAIN 4" ABOVE BASIN RIM WITH AIR GAP PER CODE.
- P12 PROVIDE DECK PLATE CLEANOUT. REFER TO C1/P-401.
- P13 REFER TO PLUMBING DRAWING P-101 FOR CONTINUATION.
- P14 CONDENSATE DISCHARGE PIPING TO BE ROUTED FROM WALK-IN FREEZER TO FS-1. PROVIDE CODE COMPLIANT AIR GAP.
- P15 PROVIDE MOP BASIN AND PIPING CONNECTIONS.
- P16 PROVIDE FLOOR DRAIN WITH TRAP GUARD INSERT. LOCATE DRAIN TO BE CLEAR OF PALLET BUMPER.
- P17 PROVIDE INDIRECT WASTE FROM VACUUM SYSTEM TO FS-1. COORDINATE WITH REFRIGERATION CONTRACTOR, G.C., AND ALDI FIELD REPRESENTATIVE SUCH THAT A CODE COMPLIANT AIR GAP IS MAINTAINED PRIOR TO ROUGH-IN.

Issued:	Date:
A Client Review Set	05/07/19
B Permit Set	06/12/19
C Client Review Set	02/07/20
D Bid Set	02/10/20
Revisions:	Date:

**DO NOT SCALE PLANS**  
Copying, Printing, Software and other processes required to produce these prints can stretch or shrink the actual paper or layout. Therefore, scaling of this drawing may be inaccurate. Contact the consultants with any need for additional dimensions or clarifications.

**ms consultants, inc.**  
engineers, architects, planners  
5444 Wade Park Blvd.  
Suite 160  
Raleigh, NC 27607-4299  
phone 919.772.5565  
fax 919.779.2308

DRAWN BY:	MEM
REVIEWED BY:	KFF

Seal  
PROFESSIONAL OF RECORD:  
JASON E. CHRISTOFF No. 039391  
EXP. DATE: 12/31/2020

**ALDI Inc.**  
1985 Old Union Church Road  
Salisbury, NC 28146  
(704) 642-0000  
(704) 642-0078 fax

ALDI Inc. Store #: 154  
Cornelius, NC  
20101 West Catawba Avenue  
Cornelius, NC 28031  
Mecklenburg County  
Project Name & Location:

Enlarged Plumbing Plans Drawing Name:	
Prototype Rls. 12/10/18	Project No. 40452-07
Type: LHSD-V8ER	
	P-201
Scale: As Noted	Drawing No.

PLOTTED: 2/10/2020 9:38 AM