

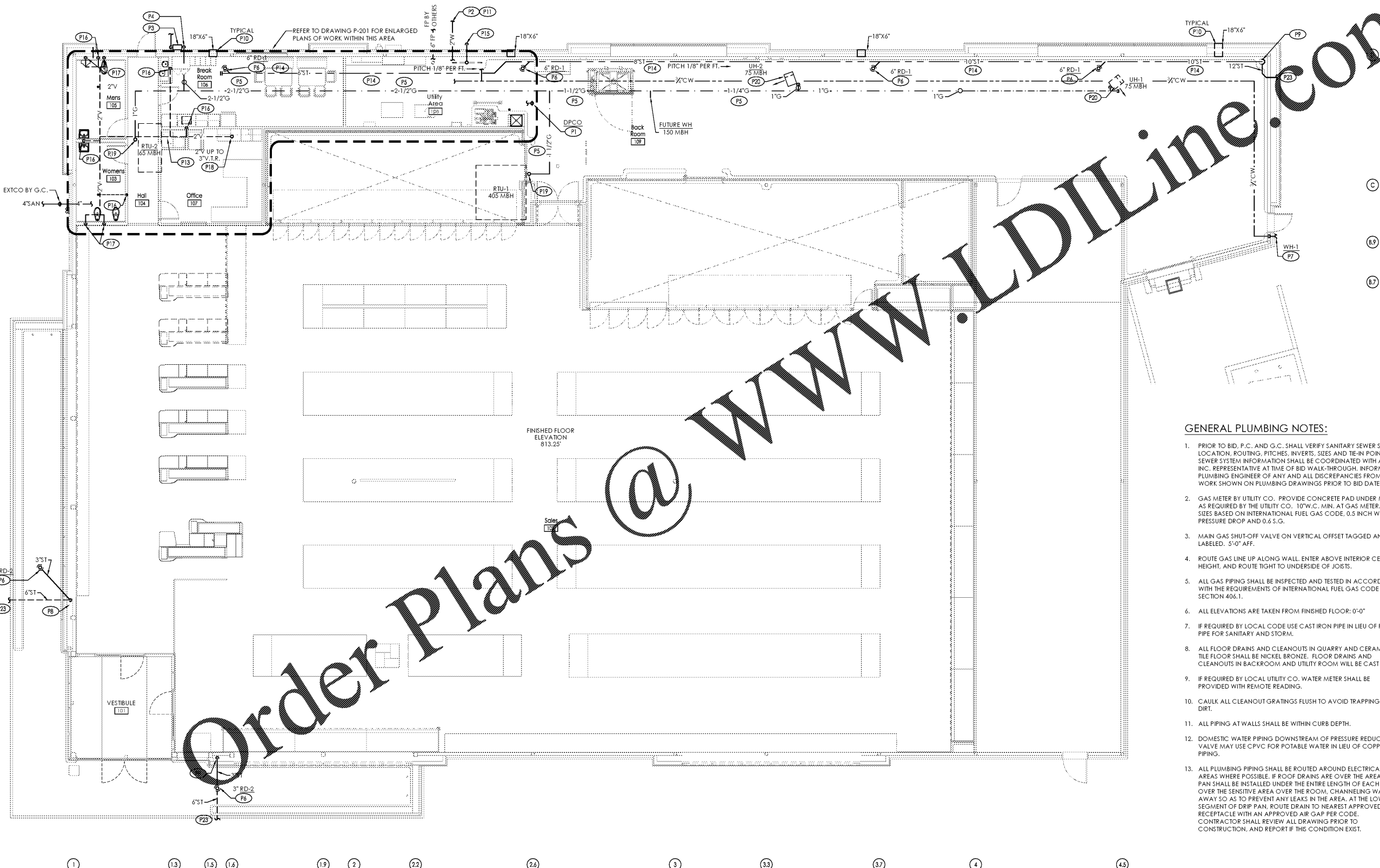
PLUMBING PLAN KEYNOTES:

- (P1) PROVIDE DECK PLATE CLEANOUT. REFER TO C1/P-401.
- (P2) 2" WATER SERVICE FROM BELOW GRADE. CONNECT TO SITE PIPING. REFER TO SITE UTILITY DRAWINGS FOR CONTINUATION AND COORDINATION. REFER TO WATER SERVICE DETAIL A1/P-401.
- (P3) PROVIDE GAS METER WITH GAS REGULATOR. CONNECT TO UNDERGROUND GAS SERVICE BY GAS COMPANY. GAS REGULATOR SHALL BE 10" W.C.. MINIMUM INLET PRESSURE REQUIRED AT RTU'S IS 7"W.C.. REFER TO DETAIL B1/P-401.
- (P4) PROVIDE 2-1/2" G FROM GAS METER TO 11'-0" ABOVE GRADE INTO BUILDING. SECURE GAS PIPING TIGHT TO EXTERIOR WALL. REFER TO ISOMETRIC B2/P-301.
- (P5) PROVIDE GAS PIPING. ROUTE AT UNDERSIDE OF STEEL.
- (P6) PROVIDE ROOF DRAIN.
- (P7) PROVIDE 3/4" ANTI-FREEZE LOCKABLE BOX WALL HYDRANT. MOUNT 18" ABOVE FINISHED FLOOR. PROVIDE WITH TWO (2) EXTRA KEYS.
- (P8) PROVIDE 3" PVC DOWNSPOUT FROM CANOPY TO 4'ST. BELOW GRADE. PROVIDE WALL CLEANOUT WITHIN PLASTER 24" ABOVE FINISHED GRADE.
- (P9) PROVIDE 10'ST DN. THRU FLOOR WITH CLEANOUT IN RISER 24" A.F.F.. INCREASE TO A 1/2'ST AND ROUTE BELOW FLOOR SLAB AS SHOWN. COORDINATE WITH SITE CONTRACTOR FOR EXACT EXIT LOCATION AND INVERT. MAKE FINAL CONNECTION TO SITE PIPING.

- (P10) SCUPPER. BY G.C. USED FOR SECONDARY ROOF DRAINAGE.
- (P11) REFER TO SITE UTILITY DRAWINGS FOR CONTINUATION OF PIPING. P.C. SHALL MAKE FINAL CONNECTIONS TO SITE PIPING. COORDINATE WITH S.C. FOR CONNECTIONS.
- (P12) PROVIDE SANITARY PIPING BELOW FLOOR.
- (P13) PROVIDE VENT PIPING ABOVE CEILING.
- (P14) PROVIDE ROOF STORM DRAINAGE PIPING. ROUTE AS HIGH AS POSSIBLE. PITCH 1/8" PER FOOT TOWARDS LEADER. INSULATE ENTIRE LENGTH OF HORIZONTAL ROOF DRAIN LEADER - SEE SPEC.

- (P15) PROVIDE 4" RPZ DISCHARGE CENTERED IN PILASTER. REFER TO A1/P-401 FOR DETAIL.
- (P16) PROVIDE 1/2" V UP.
- (P17) PROVIDE 2" V UP.
- (P18) PROVIDE VENT THROUGH ROOF.
- (P19) PROVIDE GAS PIPING UP THRU ROOF TO RTU. PROVIDE WITH DIRT LEG AND ISOLATION SHUTOFF VALVE. MAKE FINAL CONNECTION TO UNIT. REFER TO ISOMETRIC B2/P-301 AND DETAIL B2/P-401.

- (P20) PROVIDE GAS PIPING TO UNIT HEATER. PROVIDE WITH DIRT LEG AND ISOLATION SHUTOFF VALVE. MAKE FINAL CONNECTION TO UNIT. REFER TO ISOMETRIC B2/P-301 AND DETAIL B3/P-401.
- (P21) PROVIDE 4" CAPPED SANITARY LINE BELOW FLOOR FOR FUTURE USE.
- (P22) SECONDARY CANOPY ROOF DRAINING ACCOMPLISHED BY DRAINING OVER ROOF EDGE. CANOPY ROOF EDGE CONSTRUCTION DOES NOT EXTEND ABOVE CANOPY ROOF. REFER TO ARCHITECTURAL PLANS.
- (P23) REFER TO SITE UTILITY DRAWINGS FOR CONTINUATION OF PIPING. P.C. SHALL MAKE FINAL CONNECTIONS TO SITE PIPING. COORDINATE WITH S.C. FOR CONNECTIONS.



Issued:	Date:
A Client Review Set	05/07/19
B Permit Set	06/12/19
C Client Review Set	02/07/20
D Bid Set	02/10/20
Revisions:	Date:

DO NOT SCALE PLANS
 Copying, Printing, Software and other processes required to produce these prints can stretch or shrink the actual paper or layout. Therefore, scaling of this drawing may be inaccurate. Contact ms consultants with any need for additional dimensions or clarifications.

ms consultants, inc.
 engineers, architects, planners
 5444 Wade Park Blvd.
 Suite 160
 Raleigh, NC 27607-4299
 phone 919.772.5565
 fax 919.779.2308

DRAWN BY:	MEM
REVIEWED BY:	KFF

Seal

PROFESSIONAL OF RECORD:
 JASON E. CHRISTOFF No. 039391
 EXP. DATE: 12/31/2020

ALDI Inc.
 1985 Old Union Church Road
 Salisbury, NC 28146
 (704) 642-0022
 (704) 642-0078 fax

ALDI Inc. Store #: 154
 Cornelius, NC
 20101 West Catawba Avenue
 Cornelius, NC 28031
 Mecklenburg County
 Project Name & Location:

Plumbing Floor Plan Drawing Name:	Project No.
Prototype Rls. 12/10/18	40452-07
Type: LHSD-V8ER	P-101
Scale: As Noted	Drawing No.

GENERAL PLUMBING NOTES:

- PRIOR TO BID, P.C. AND G.C. SHALL VERIFY SANITARY SEWER SYSTEM LOCATION, ROUTING, PITCHES, INVERTS, SIZES AND TIE-IN POINT. ALL SEWER SYSTEM INFORMATION SHALL BE COORDINATED WITH ALDI, INC. REPRESENTATIVE AT TIME OF BID WALK-THROUGH. INFORM PLUMBING ENGINEER OF ANY AND ALL DISCREPANCIES FROM WORK SHOWN ON PLUMBING DRAWINGS PRIOR TO BID DATE.
- GAS METER BY UTILITY CO. PROVIDE CONCRETE PAD UNDER METER AS REQUIRED BY THE UTILITY CO. 10"W.C. MIN. AT GAS METER. PIPE SIZES BASED ON INTERNATIONAL FUEL GAS CODE. 0.5 INCH W.C. PRESSURE DROP AND 0.6 S.G.
- MAIN GAS SHUT-OFF VALVE ON VERTICAL OFFSET TAGGED AND LABELED. 5'-0" AFF.
- ROUTE GAS LINE UP ALONG WALL. ENTER ABOVE INTERIOR CEILING HEIGHT, AND ROUTE TIGHT TO UNDERSIDE OF JOISTS.
- ALL GAS PIPING SHALL BE INSPECTED AND TESTED IN ACCORDANCE WITH THE REQUIREMENTS OF INTERNATIONAL FUEL GAS CODE SECTION 406.1.
- ALL ELEVATIONS ARE TAKEN FROM FINISHED FLOOR: 0'-0"
- IF REQUIRED BY LOCAL CODE USE CAST IRON PIPE IN LIEU OF PVC PIPE FOR SANITARY AND STORM.
- ALL FLOOR DRAINS AND CLEANOUTS IN QUARRY AND CERAMIC TILE FLOOR SHALL BE NICKEL BRONZE. FLOOR DRAINS AND CLEANOUTS IN BACKROOM AND UTILITY ROOM WILL BE CAST IRON.
- IF REQUIRED BY LOCAL UTILITY CO. WATER METER SHALL BE PROVIDED WITH REMOTE READING.
- CAULK ALL CLEANOUT GRATINGS FLUSH TO AVOID TRAPPING OF DIRT.
- ALL PIPING AT WALLS SHALL BE WITHIN CURB DEPTH.
- DOMESTIC WATER PIPING DOWNSTREAM OF PRESSURE REDUCING VALVE MAY USE CPVC FOR POTABLE WATER IN LIEU OF COPPER PIPING.
- ALL PLUMBING PIPING SHALL BE ROUTED AROUND ELECTRICAL AREAS WHERE POSSIBLE. IF ROOF DRAINS ARE OVER THE AREA, DRIP PAN SHALL BE INSTALLED UNDER THE ENTIRE LENGTH OF EACH PIPE OVER THE SENSITIVE AREA OVER THE ROOM. CHANNELING WATER AWAY SO AS TO PREVENT ANY LEAKS IN THE AREA. AT THE LOWER SEGMENT OF DRIP PAN, ROUTE DRAIN TO NEAREST APPROVED RECEPTACLE WITH AN APPROVED AIR GAP PER CODE. CONTRACTOR SHALL REVIEW ALL DRAWING PRIOR TO CONSTRUCTION, AND REPORT IF THIS CONDITION EXISTS.

PLOTTED: 2/10/2020 9:37 AM