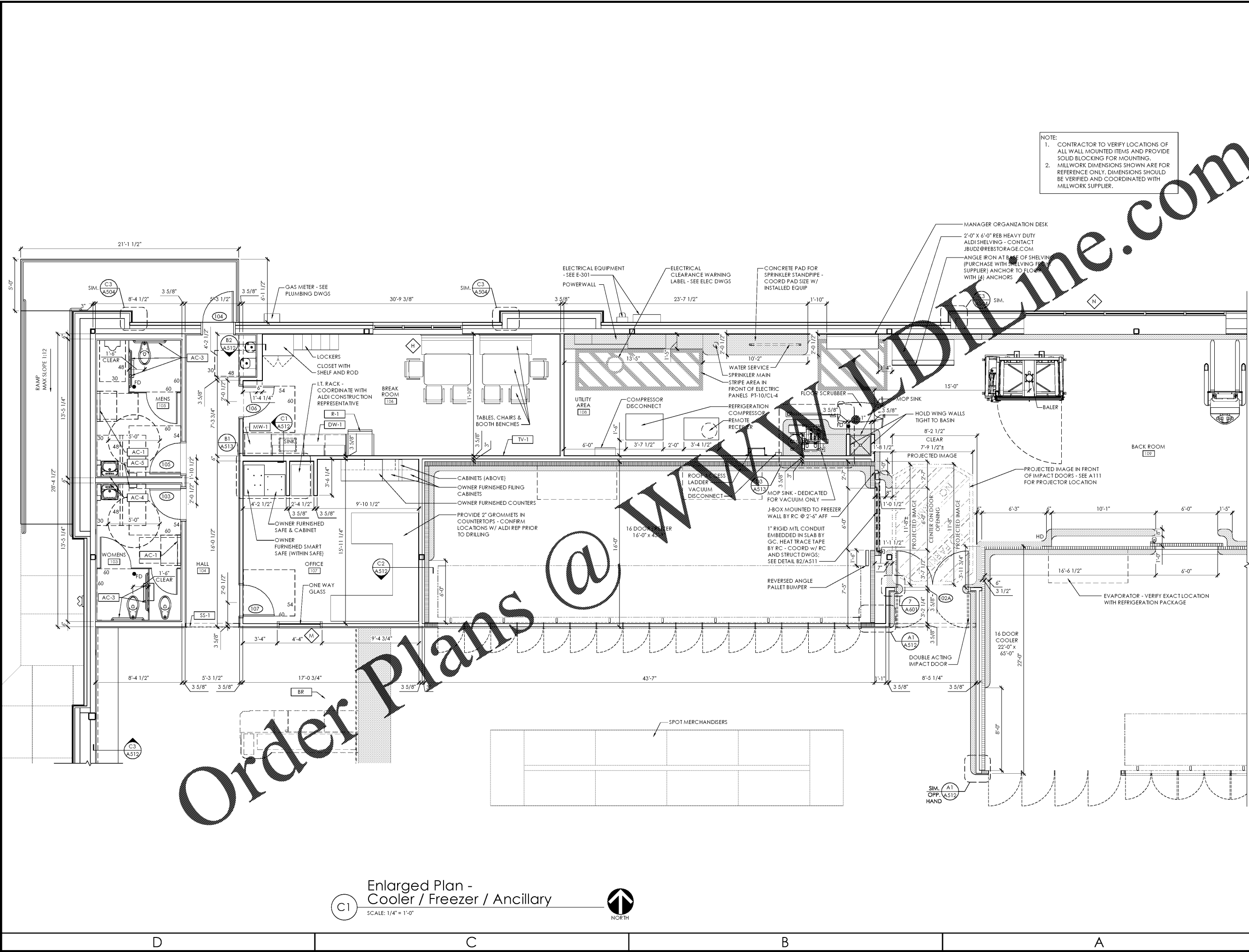


PLOTTED: 2/10/2020 9:19 AM

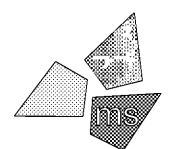


NOTE:
 1. CONTRACTOR TO VERIFY LOCATIONS OF ALL WALL MOUNTED ITEMS AND PROVIDE SOLID BLOCKING FOR MOUNTING.
 2. MILLWORK DIMENSIONS SHOWN ARE FOR REFERENCE ONLY. DIMENSIONS SHOULD BE VERIFIED AND COORDINATED WITH MILLWORK SUPPLIER.

Issued:	Date:
A Client Review Set	05/07/19
B Permit Set	06/12/19
C Client Review Set	02/07/20
D Bid Set	02/10/20
Revisions:	Date:

DO NOT SCALE PLANS

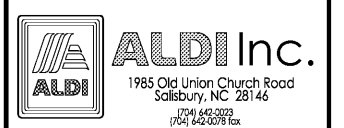
Copying, Printing, Software and other processes required to produce these prints can stretch or shrink the actual paper or layout. Therefore, scaling of this drawing may be inaccurate. Contact us consultants with any need for additional dimensions or clarifications.



ms consultants, inc.
 engineers, architects, planners
 5444 Wade Park Blvd.
 Suite 160
 Raleigh, NC 27607-4299
 phone 919.772.5565
 fax 919.779.2308

DRAWN BY: KKL
 REVIEWED BY: NAL

Seal
 PROFESSIONAL OF RECORD:
 CHARLES M. BUSCH No. 14751
 EXP. DATE: 06/30/2020



ALDI Inc. Store #: 154
 Cornelius, NC
 20101 West Catawba Avenue
 Cornelius, NC 28031
 Mecklenburg County
 Project Name & Location:

Enlarged Plans	
Drawing Name:	
Prototype Rls. 12/10/18	Project No. 40452-07
Type: LHSD-V8ER	
	A-401
Scale: As Noted	Drawing No.

Enlarged Plan - Cooler / Freezer / Ancillary
 SCALE: 1/4" = 1'-0"
 NORTH

Order Plans @ www.dline.com