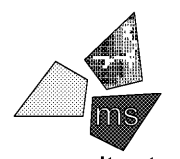


Issued:	Date:
A Client Review Set	05/07/19
B Permit Set	06/12/19
C Client Review Set	02/07/20
D Bid Set	02/10/20
Revisions:	Date:

DO NOT SCALE PLANS

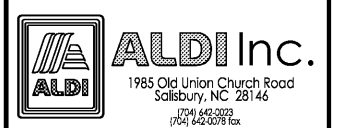
Copying, Printing, Software and other processes required to produce these prints can stretch or shrink the actual paper or layout. Therefore, scaling of this drawing may be inaccurate. Contact your consultants with any need for additional dimensions or clarifications.



ms consultants, inc.
 engineers, architects, planners
 5444 Wade Park Blvd.
 Suite 160
 Raleigh, NC 27607-4299
 phone 919.772.5565
 fax 919.779.2308

DRAWN BY: CLS
 REVIEWED BY: DMS/CJH

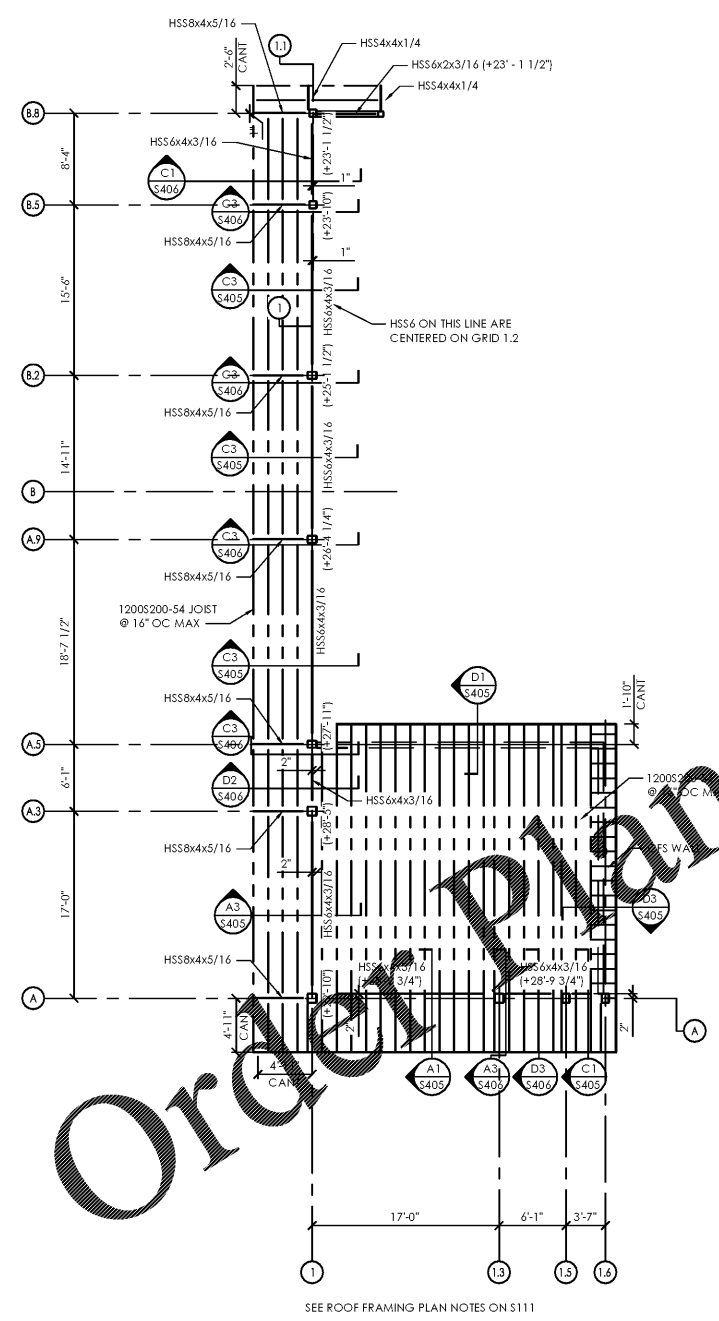
Seal
 PROFESSIONAL OF RECORD:
 CRAIG E. METZGER PE No. 044723
 EXP. DATE: 12/31/19



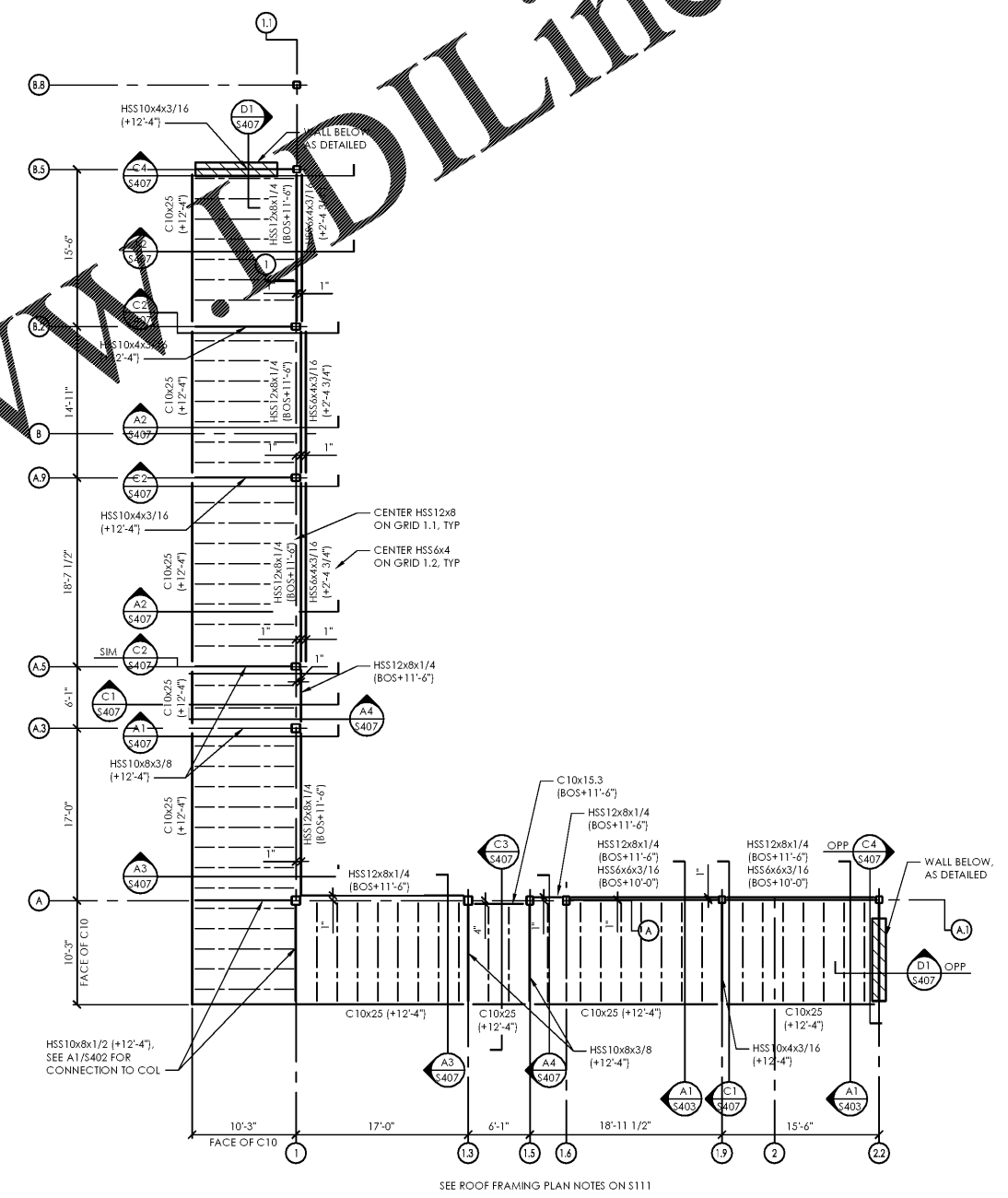
ALDI Inc.
 1985 Old Union Church Road
 Salisbury, NC 28146
 (704) 642-2000
 (704) 642-0078 fax

ALDI Inc. Store #: 154
 Cornelius, NC
 20101 West Catawba Avenue
 Cornelius, NC 28031
 Mecklenburg County
 Project Name & Location:

High Roof & Canopy Framing Plans	
Drawing Name:	
Prototype Rls. 12/10/18	Project No. 40452-07
Type: LHSD-V8ER	
	S-112
Scale: As Noted	Drawing No.



D1 High Roof Framing Plan
 SCALE: 1/8" = 1'-0"



A1 Canopy Framing Plan
 SCALE: 1/8" = 1'-0"



WWW.DILine.com

Order Plans @