

THIS SPACE INTENTIONALLY LEFT BLANK

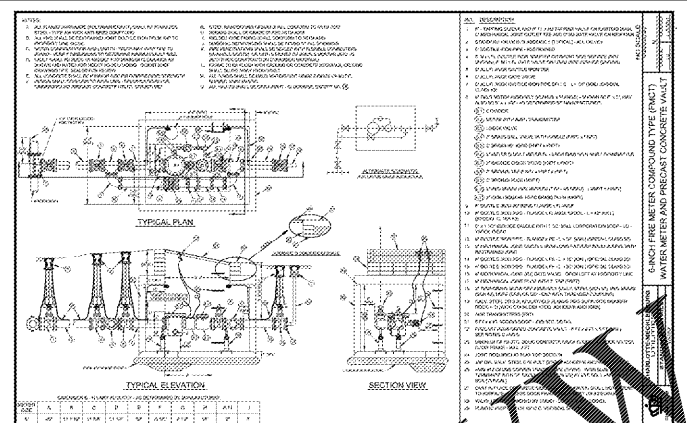
THIS SPACE INTENTIONALLY LEFT BLANK

THIS SPACE INTENTIONALLY LEFT BLANK

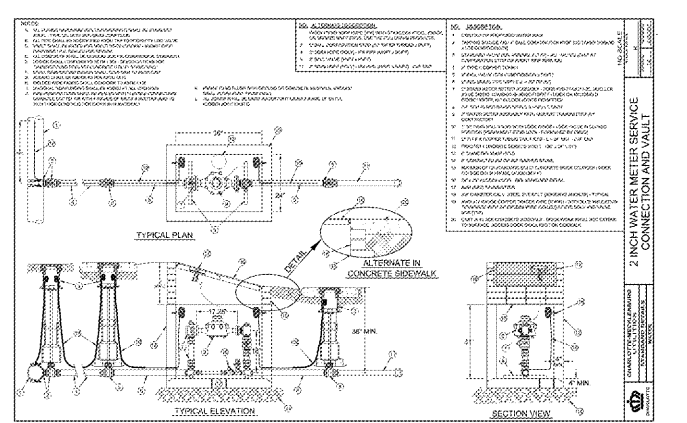
THIS SPACE INTENTIONALLY LEFT BLANK

THIS SPACE INTENTIONALLY LEFT BLANK

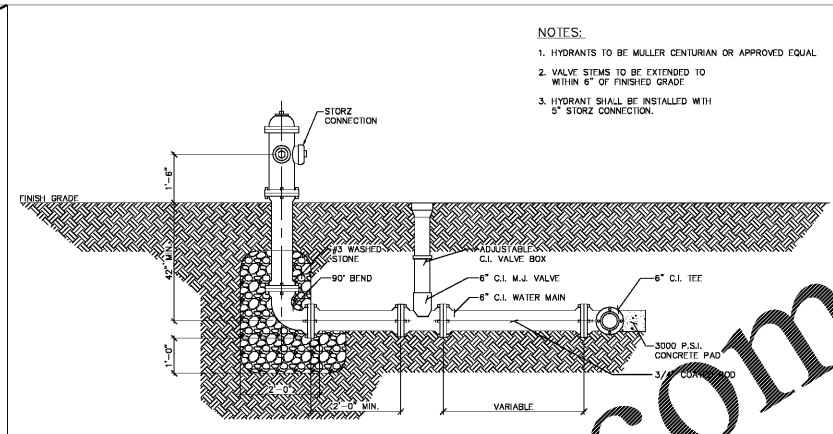
Order Plans @ WWW.LDILINE.COM



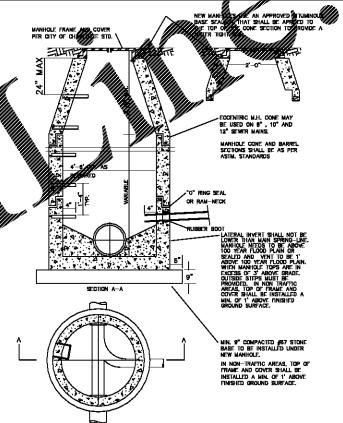
6" FMTC WATER METER N.T.S. 11



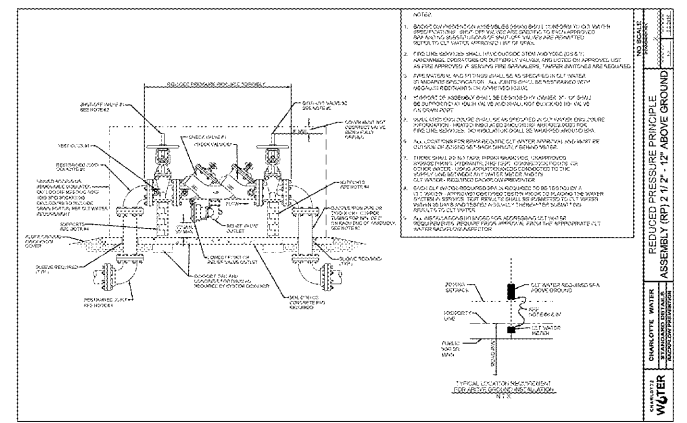
2" FMTC WATER METER N.T.S. 9



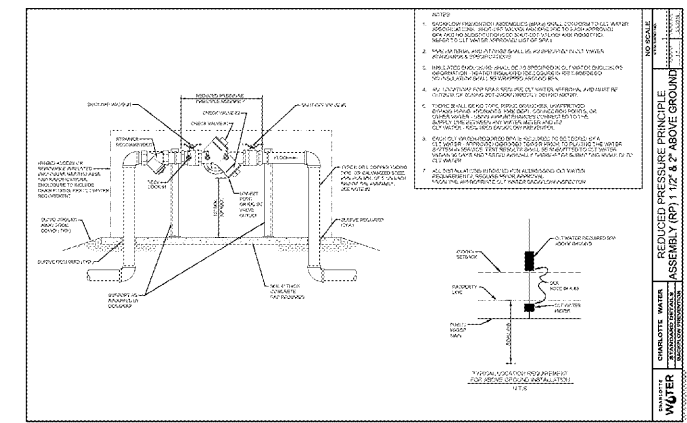
FIRE HYDRANT N.T.S. 4



SANITARY SEWER MANHOLE N.T.S. 3



25' - 12' RPPA N.T.S. 2



2' RPPA N.T.S. 1

- NOTES:
1. HYDRANTS TO BE MULLER CENTURIAN OR APPROVED EQUAL.
 2. VALVE STEMS TO BE EXTENDED TO WITHIN 6" OF FINISHED GRADE.
 3. HYDRANT SHALL BE INSTALLED WITH 5" STORZ CONNECTION.



ColeJenest & Stone

Shaping the Environment
Realizing the Possibilities

- Land Planning
- Landscaping Architecture
- Civil Engineering
- Urban Design

200 South Tryon Street, Suite 1400
Charlotte, North Carolina 28202
#704.376.1555 #704.376.7851
www.colejeneststone.com

CHARTER CORNELIUS, LP

75 Holly Hill Lane, Suite 305
Greenwich
Connecticut 06830

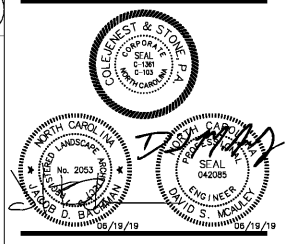
ONE NORMAN

20101 West Catawba Avenue
Cornelius
North Carolina 28031

SITE DETAILS

Project No.
4493
Issued
03/28/19

Revised



C-806

The drawings, the project manual and the design shown thereon are instruments of ColeJenest & Stone, P.A. The reproduction or unauthorized use of the documents without consent of ColeJenest & Stone, P.A. is prohibited.

ColeJenest & Stone, P.A. 2019